

THIS IS ISSUED IN STRICT CONFIDENCE THAT IT IS NOT USED AS A BASIS FOR MANUFACTURE OR SALE AND THAT IT IS NOT COPIED, REPRINTED OR DISCLOSED TO A THIRD PARTY EITHER WHOLLY OR IN PART WITHOUT THE PRIOR WRITTEN CONSENT OF CAL TEST ELECTRONICS, INC.

1. PUSH-IN SAFETY SOCKET w/ $\varnothing$  .080 ( $\varnothing$  2.0) SOLDER FORK.
2. SPECIFICATIONS:  
INSULATOR: POLYAMIDE (NYLON)  
CONTACT: BRASS, NICKEL PLATED
3. RATING:  
VOLTAGE: 1,000V CATIII P2 (IEC61010-1)  
CURRENT: 25A MAX.  
RESISTANCE:  $<5\text{m}\Omega$ .  
TEMPERATURE:  $-20^{\circ}\text{C}$  TO  $+80^{\circ}\text{C}$ .
4. MOUNTING HOLE: REF. DIAGRAM.

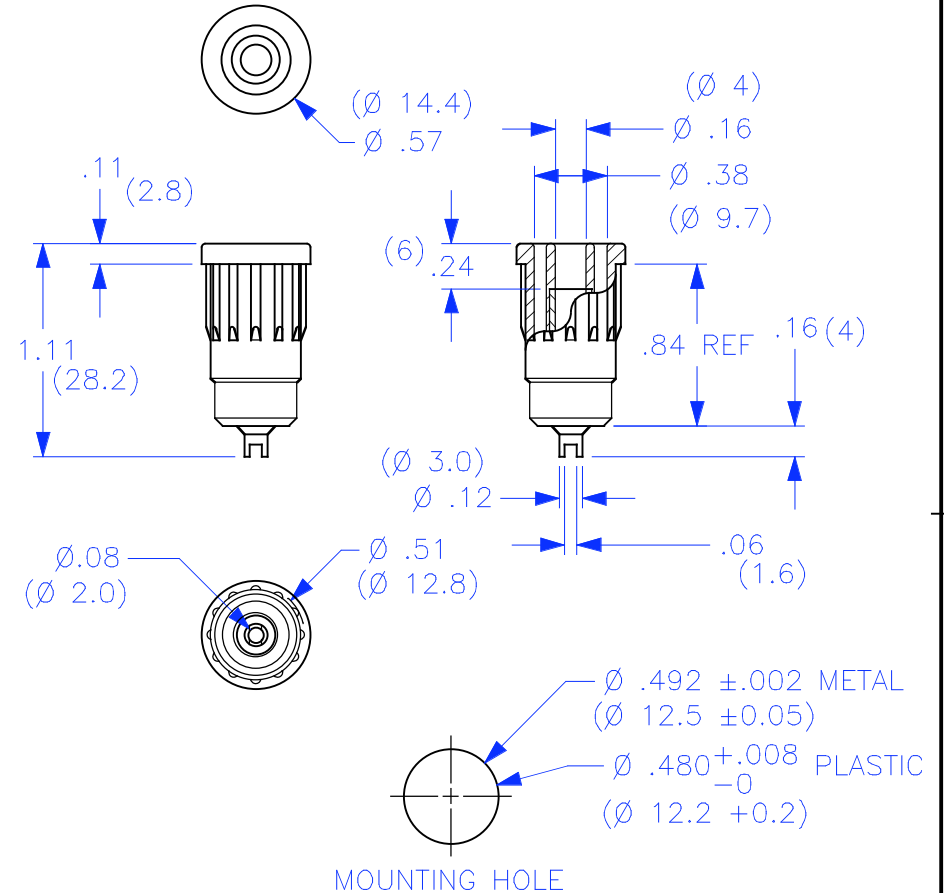
**PART NUMBER**

**CT2245-#**

COLOR: 0 - BLACK  
1 - BROWN  
2 - RED  
3 - ORANGE  
4 - YELLOW  
5 - GREEN  
6 - BLUE  
7 - PURPLE  
8 - GRAY  
9 - WHITE

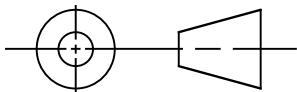
REVISIONS

REV.	DESCRIPTIONS	DATE	APPROVED
—	CLASS A RELEASED	7/12/99	
A	REVISED CONFIGURATION & MATL. MOUNTING HOLE. NEW TOOLING.	4/18/04	



MOUNTING HOLE

THIRD ANGLE PROJECTION



UNLESS OTHERWISE SPECIFIED  
DIMENSIONS ARE IN INCHES  
TOLERANCES ARE:  
FRACTIONS DECIMALS  
 $\pm 1/32$  .XX  $\pm$  .02  
XXX  $\pm$  .005  
DO NOT SCALE DRAWING

CONTRACT NO.

APPROVALS

DATE

DRAWN WDH

7/12/99

CHECKED

ENGR.

DESIGN ACTIVITY

**Cal Test Electronics**

22820 Savi Ranch Parkway  
Yorba Linda, CA 92887-4610

TITLE

**4mm PUSH-IN SAFETY SOCKET,  
w/ $\varnothing$  .080 SOLDER FORK**

SIZE

A

CAGE CODE

43F45

DWG. NO.

**P224500**

REV.

A

SCALE

1:1

SHEET

1 OF 1

# Mouser Electronics

Authorized Distributor

Click to View Pricing, Inventory, Delivery & Lifecycle Information:

## Global Specialties:

[CT2245-9](#) [CT2245-5](#) [CT2245-7](#) [CT2245-0](#) [CT2245-6](#) [CT2245-2](#) [CT2245-1](#) [CT2245-4](#) [CT2245-8](#)