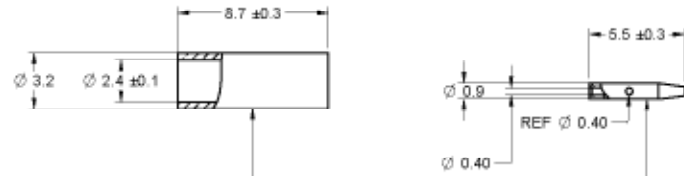


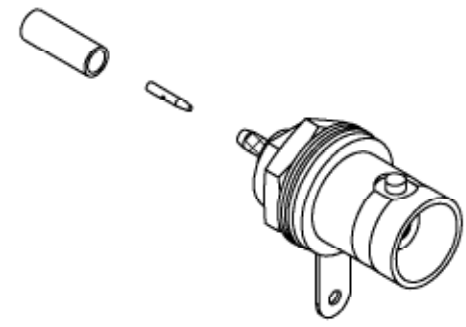
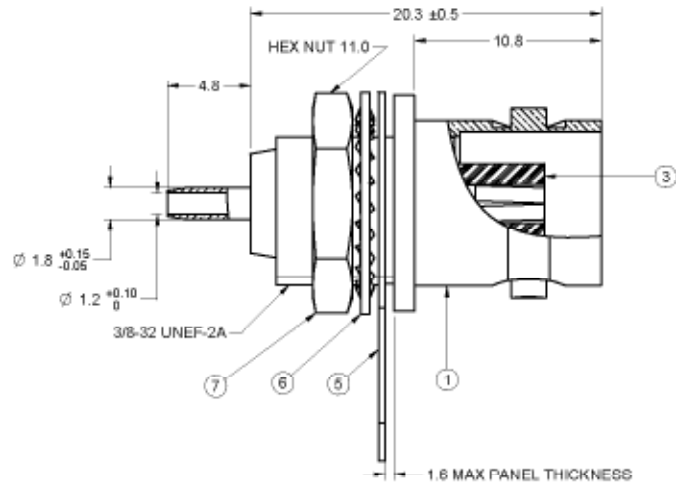
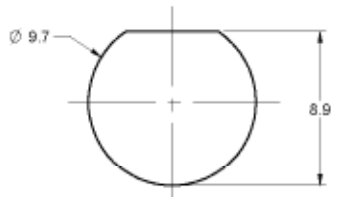
	5			4				3		2		1
PART NUMBER	ITEM ① BODY	ITEM ② CONTACT	ITEM ③ INSULATOR	ITEM ④ CRIMP SLEEVE	ITEM ⑤ SOLDER LUG	ITEM ⑥ LOCK WASHER	ITEM ⑦ MOUNTING NUT					
CP-89-27-BM2	BRASS NICKEL PLATED	BRASS GOLD PLATED	TEFLON	BRASS NICKEL PLATED	BRASS NICKEL PLATED	STEEL NICKEL PLATED	BRASS NICKEL PLATED					

DRAWING NO. CP-89-27-BM2			
REVISIONS			
01	OFFICIAL RELEASE	2009.12.1	<i>Betty</i>
10-29-09	2	11	13 30 02



受控 CONTROLLED DOCUMENT					
编号 P/N	CP8927BM2	版本 Rev	01	日期 Rel'd Date	DEC 17,09

RECOMMENDED MOUNTING HOLE DIMENSIONS



NOTES:

1. TECHNICAL DETAIL: REFER TO EMERSON DOCUMENT P/N 28-0000

THIS DRAWING TO BE INTERPRETED
PER ANSI Y 14.5M - 1994

COMPANY CONFIDENTIAL

TOLERANCE UNLESS OTHERWISE SPECIFIED	DRAWN BY GARY.ZHG	DATE 10-29-09
DECIMALS mm	CHECKED BY LINDA.WU	DATE 10-29-09
X ± 0.5	APPROVED BY THOMAS	DATE 10-29-09
X.X ± 0.2		
X.XX ± 0.1		
ANGLES ± 0.5°	UM mm	

TITLE JACK ASSEMBLY, STR CRIMP TYPE, FRONT MT BULKHEAD, BNC 50 OHM, RG178	

THIS DRAWING WAS PRODUCED BY COMPUTER. DO NOT SCALE DRAWING OR UPDATE MANUALLY.		
SHEET 1 OF 2	DRAWING NO. CP-89-27-BM2	SIZE C