



CLT-115-02-F-D-A-K-BE

CLT-105-02-F-D

CLT-125-02-L-D

(2.00 mm) .0787"

CLT SERIES

LOW-PROFILE DUAL WIPE SOCKET

SPECIFICATIONS

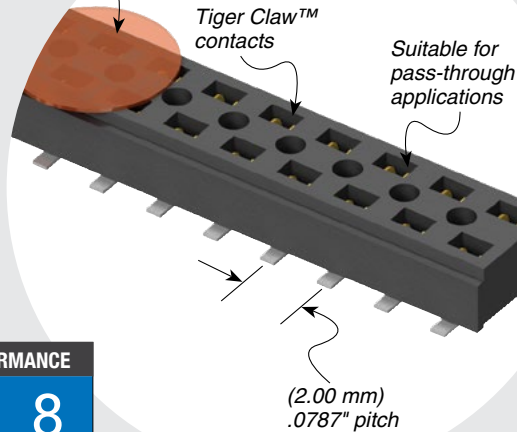
For complete specifications and recommended PCB layouts see www.samtec.com?CLT

Insulator Material: Black Liquid Crystal Polymer
Contact Material: Phosphor Bronze
Plating: Sn or Au over 50 µm (1.27 µm) Ni
Current Rating (TMMH/CLT): 4.1 A per pin (2 pins powered)
Operating Temp Range: -55 °C to +125 °C
Insertion Depth: Top Entry= (1.40 mm) .055" minimum Bottom Entry= (2.57 mm) .101" minimum (add board thickness for correct post OAL)
Max Cycles: 100 with 10 µm (0.25 µm) Au
RoHS Compliant: Yes

Mates with: TMM, TMMH, MTMM, MMT, TW, TSH



Available with optional Pick & Place Pads

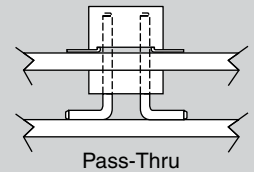


HIGH-SPEED CHANNEL PERFORMANCE

Rating based on Samtec reference channel. For full SI performance data visit Samtec.com or contact SIG@samtec.com

8 Gbps

APPLICATION



PROCESSING

Lead-Free Solderable: Yes
SMT Lead Coplanarity: (0.10 mm) .004" max (02-25) (0.15 mm) .006" max (26-34)* (0.20 mm) .008" max (35-50)*
 *(.004" stencil solution may be available; contact IPG@samtec.com)

RECOGNITIONS

For complete scope of recognitions see www.samtec.com/quality



ALSO AVAILABLE (MOQ Required)

- Other platings

Note: Some lengths, styles and options are non-standard, non-returnable.

CLT	1	NO. PINS PER ROW	LEAD STYLE	PLATING OPTION	D	OTHER OPTIONS							
		02 thru 50	<p>-01 = Through-hole</p> <p>-02 = Surface Mount</p> <p>-03 = Through-hole</p>	<p>-F = Gold flash on contact, Matte Tin on tail</p> <p>-L = 10 µm (0.25 µm) Gold on contact, Matte Tin on tail</p> <p>-G = 10 µm (0.25 µm) Gold on contact, Gold flash on tail</p>		<p>All options require Style -02</p> <p>-BE = Bottom Entry (Required for bottom entry applications)</p> <p>-A = Alignment Pin (3 positions minimum) Metal or plastic at Samtec's discretion</p> <p>-K = (5.00 mm) .197" DIA Polyimide Film Pick & Place Pad (04 thru 50 only)</p> <p>-P = Pick & Place Pad (4 positions minimum) (Not always necessary for auto placement.)</p> <p>-TR = Tape & Reel Packaging (36 positions max)</p> <p>-FR = Full Reel Tape & Reel (must order maximum quantity per reel; contact Samtec for quantity breaks) (36 positions max)</p>							
		<table border="1"> <thead> <tr> <th>LEAD STYLE</th> <th>A</th> </tr> </thead> <tbody> <tr> <td>-01</td> <td>(2.16) .085</td> </tr> <tr> <td>-03</td> <td>(2.95) .116</td> </tr> </tbody> </table>		LEAD STYLE	A	-01	(2.16) .085	-03	(2.95) .116				
LEAD STYLE	A												
-01	(2.16) .085												
-03	(2.95) .116												

Due to technical progress, all designs, specifications and components are subject to change without notice.

WWW.SAMTEC.COM

All parts within this catalog are built to Samtec's specifications. Customer specific requirements must be approved by Samtec and identified in a Samtec customer-specific drawing to apply.

Mouser Electronics

Authorized Distributor

Click to View Pricing, Inventory, Delivery & Lifecycle Information:

Samtec:

[CLT-104-02-F-D](#) [CLT-104-02-L-D](#) [CLT-102-02-F-D-BE](#) [CLT-110-02-G-D-BE-A-K-TR](#) [CLT-105-02-L-D-BE-A-P-TR](#)
[CLT-110-02-G-D-BE-A](#) [CLT-120-02-G-D-BE-A](#) [CLT-105-02-F-D-A](#) [CLT-102-02-G-D](#) [CLT-105-02-L-D-A](#) [CLT-103-02-G-D-A](#) [CLT-110-02-G-D-A](#) [CLT-103-02-L-D-BE-A](#) [CLT-105-02-G-D-A](#) [CLT-102-02-F-D](#) [CLT-104-02-F-D-BE](#) [CLT-104-02-G-D-BE-A-K-TR](#) [CLT-106-02-F-D-P-TR](#) [CLT-105-02-G-D](#) [CLT-132-02-L-D-A](#) [CLT-102-02-G-D-TR](#) [CLT-105-02-L-D-A-K-TR](#) [CLT-102-02-G-D-BE](#) [CLT-102-01-L-D](#) [CLT-102-02-F-D-BE-TR](#) [CLT-106-02-L-D-BE-A](#) [CLT-120-02-L-D](#) [CLT-108-02-F-D-A-K-TR](#) [CLT-107-02-G-D-BE](#) [CLT-103-02-L-D-BE](#) [CLT-105-02-L-D-BE](#) [CLT-102-02-L-D-TR](#) [CLT-113-01-F-D](#) [CLT-111-02-L-D-A](#) [CLT-108-02-G-D-BE-A](#) [CLT-107-02-G-D](#) [CLT-106-02-L-D-BE-K-TR](#) [CLT-115-02-L-D-BE-A-K-TR](#) [CLT-107-02-F-D-BE](#) [CLT-115-01-G-D](#) [CLT-102-02-L-D](#) [CLT-109-01-F-D](#) [CLT-110-02-F-D-BE](#) [CLT-120-02-L-D-BE-A](#) [CLT-112-02-F-D-BE-A-K-TR](#) [CLT-104-02-L-D-BE-A-K-TR](#) [CLT-104-02-L-D-A-K-TR](#) [CLT-107-01-L-D](#) [CLT-103-02-F-D](#) [CLT-103-01-L-D](#) [CLT-110-02-G-D](#) [CLT-116-01-F-D](#) [CLT-110-01-L-D](#) [CLT-110-02-L-D-BE](#) [CLT-103-02-L-D-TR](#) [CLT-117-02-L-D-A](#) [CLT-106-02-G-D-A](#) [CLT-106-02-L-D-BE-A-K-TR](#) [CLT-107-02-F-D-A](#) [CLT-110-02-G-D-BE-A-K](#) [CLT-111-02-L-D-BE-A-P-TR](#) [CLT-110-01-FM-D](#) [CLT-105-02-G-D-BE-A](#) [CLT-106-02-L-D-P-TR](#) [CLT-103-02-F-D-BE-A](#) [CLT-103-02-F-D-BE](#) [CLT-105-01-L-D](#) [CLT-104-02-F-D-BE-K-TR](#) [CLT-104-02-G-D-A](#) [CLT-109-02-L-D](#) [CLT-103-02-F-D-A](#) [CLT-103-02-G-D](#) [CLT-110-02-G-D-BE](#) [CLT-110-02-L-D-A-K-TR](#) [CLT-110-02-F-D-A](#) [CLT-120-02-L-D-BE](#) [CLT-102-02-G-D-BE-TR](#) [CLT-106-02-F-D-A-K-TR](#) [CLT-104-01-L-D](#) [CLT-106-02-G-D-A-K-TR](#) [CLT-110-02-L-D](#) [CLT-108-01-F-D](#) [CLT-110-02-F-D-K-TR](#) [CLT-110-02-L-D-A](#) [CLT-105-02-L-D-BE-A](#) [CLT-115-02-F-D-A](#) [CLT-105-02-L-D-TR](#) [CLT-106-02-L-D-BE](#) [CLT-104-02-L-D-BE](#) [CLT-105-02-F-D](#) [CLT-103-02-L-D-BE-A-TR](#) [CLT-106-02-L-D-A](#) [CLT-103-02-F-D-A-TR](#) [CLT-103-02-F-D-BE-TR](#) [CLT-104-01-F-D](#) [CLT-104-02-L-D-BE-A](#) [CLT-105-01-F-D](#) [CLT-108-02-L-D-BE-A](#) [CLT-111-02-G-D-BE-A-K-TR](#) [CLT-114-02-L-D-A](#)