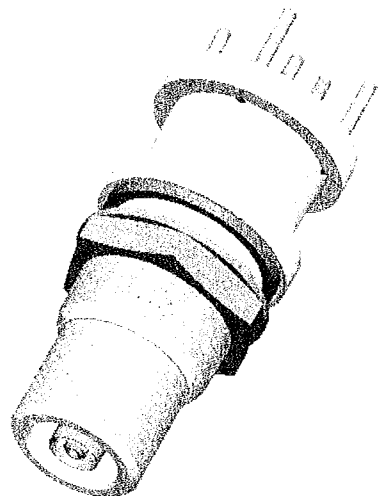


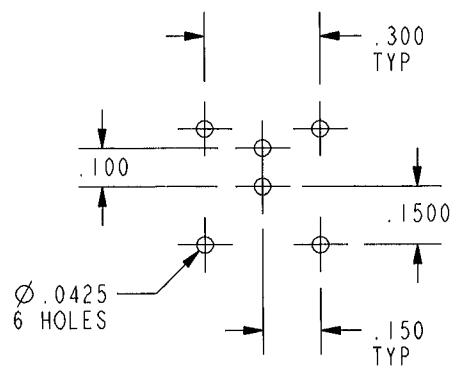
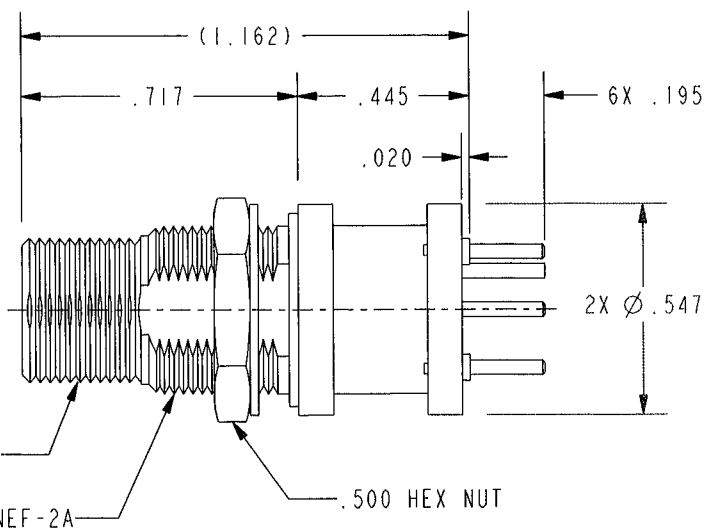
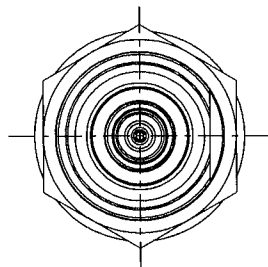
DATA CONTAINED IN THIS DOCUMENT IS
 PROPRIETARY TO TROMPETER ELECTRONICS INC.
 AND SHALL NOT BE DISCLOSED, COPIED OR USED
 FOR PROCUREMENT OR MANUFACTURE WITHOUT
 EXPRESS WRITTEN PERMISSION.

REVISIONS

REV	DESCRIPTIONS	DATE	APPROVED
B	SEE ECO # 16337	6-12-07	ORamos

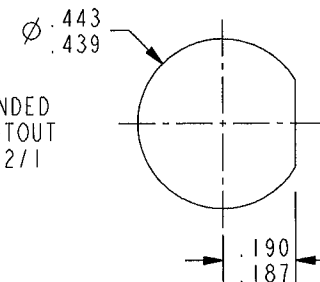


RED INDICATES ORIGINAL



RECOMMENDED MTG
 HOLE PATTERN
 SCALE 2/1

RECOMMENDED
 PANEL CUTOUT
 SCALE 2/1



- MAX PANEL THICKNESS .250
- FINISH-
 BODY: TFS-1A (NICKEL)
 CONDUCTORS: TFS-1B (GOLD)
 LEGS: TFS-1T (TIN 90/10)
- SUBMINIATURE TRS REAR MOUNT
 PC BOARD BULKHEAD RECEPTACLE

NOTES: UNLESS OTHERWISE SPECIFIED.

INTERPRET DRAWING PER MIL-STD-100 DIMENSIONS ARE IN INCHES AND INCLUDE FINISH THICKNESS UNLESS OTHERWISE SPECIFIED.		TOL: UNLESS SPECIFIED. .XX ± .02 .XXX ± .010 ANGLE ± 1°			
DRN J. CARPENTER	03-20-07	MATERIAL:			
CHK CJP	6/8/07	FINISH:		TITLE: CBBJ3159	
MANUF		SEE NOTE 2			
APPROVED ZM	6/11/07	SIZE A	CAGE CODE 14949	DRAWING NO. 3-0317	REV. B
NEXT ASSY		PROJ FILE NO. 3-0317	DO NOT SCALE DWG		SHEET IC

Mouser Electronics

Authorized Distributor

Click to View Pricing, Inventory, Delivery & Lifecycle Information:

[Cinch Connectivity Solutions:](#)

[CBBJ3159](#)