

DO NOT  
SCALE FROM  
THIS PRINT

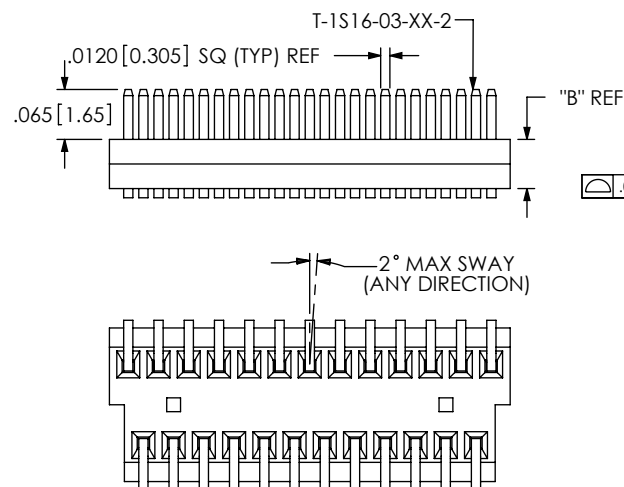
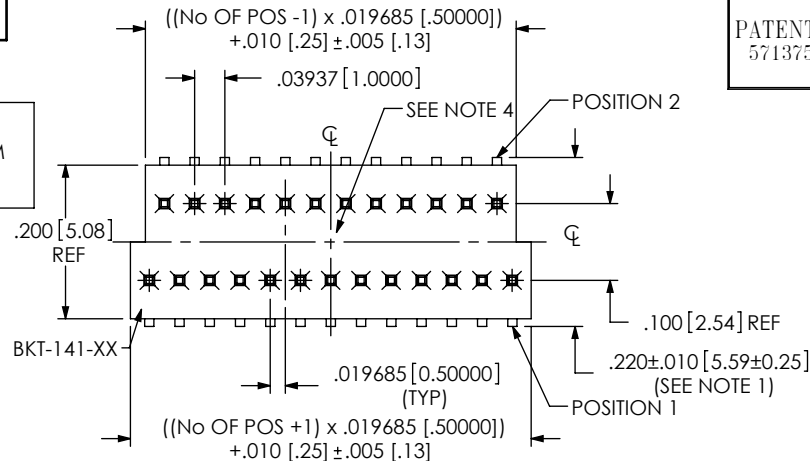
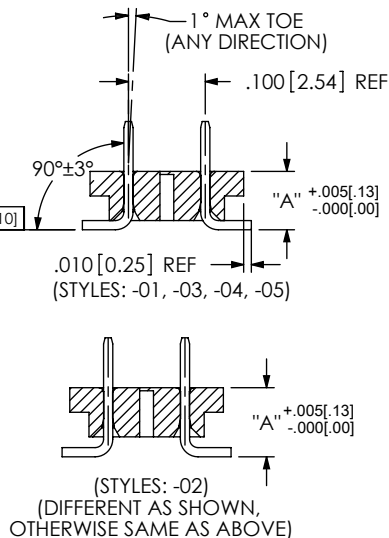
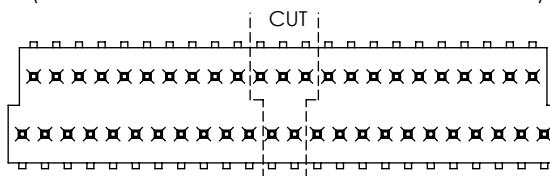


FIG 1



CUT IN-PROCESS VIEW  
(FIVE POSITIONS WILL BE LOST FOR EVERY CUT MADE)



No OF POSITIONS  
-07 THRU -69  
(UNSHROUDED)  
-15 THRU -69  
(SHROUDED)

BODY SPEC  
SEE TABLE T

PLATING SPECIFICATIONS

-L: 10μ" SELECTIVE GOLD IN  
CONTACT AREA, MATTE TIN ON TAIL  
-F: 3μ" FLASH SELECTIVE GOLD IN  
CONTACT AREA, MATTE TIN ON TAIL  
-H: 30μ" HEAVY GOLD IN CONTACT AREA  
3μ" MIN ON TAIL  
-LM: 10μ" LIGHT SELECTIVE GOLD IN  
CONTACT, MATTE TIN ON TAIL  
-FM: 3μ" FLASH SELECTIVE GOLD IN  
CONTACT, MATTE TIN TAIL

OPTIONS

-S: END SHROUDS (SEE FIG 2)  
(N/A BELOW 15 POSITIONS)  
-A: ALIGNMENT PINS  
(SEE FIG 3 - SHEET 2)  
(MINIMUM 13 POSITIONS)  
-P: PICK & PLACE PAD  
(SEE FIG 4, SHEET 2)  
(AVAILABLE ON POSITIONS  
-13 THRU -69) (SEE NOTE 3)  
-TR: TAPE & REEL PACKAGING  
(SEE FIG 6 - SHEET 2)

STYLE

-V: VERTICAL

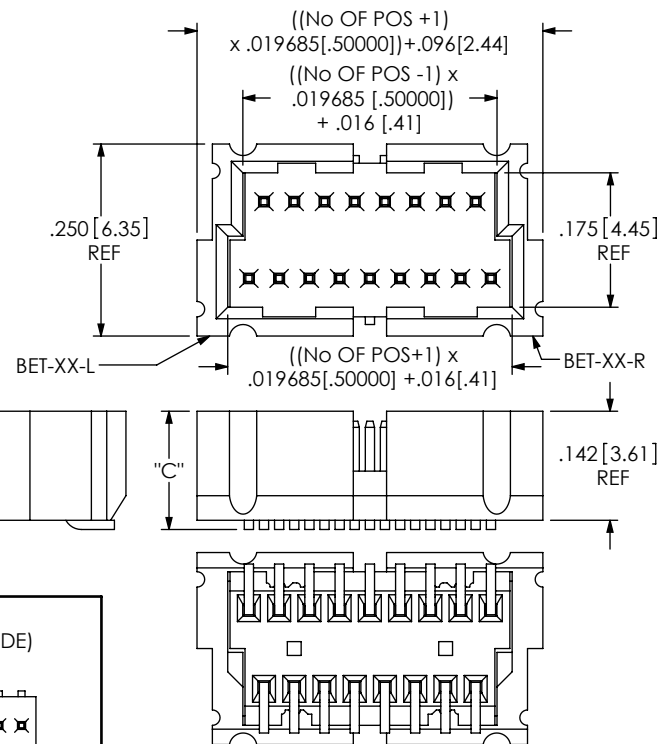


FIG 2  
DIFFERENT AS SHOWN,  
OTHERWISE SAME AS FIG 1

| TABLE 1 |               |               |               |                              |            |
|---------|---------------|---------------|---------------|------------------------------|------------|
| STYLE   | "A"           | "B" REF       | "C"           | BOARD SPACE<br>MATED W / BKS | BODY USAGE |
| -01     | .076 [ 1.93 ] | .064 [ 1.63 ] | .154 [ 3.91 ] | .163 [ 4.14 ]                | BKT-141-01 |
| -02     | .090 [ 2.29 ] | .064 [ 1.63 ] | .168 [ 4.27 ] | .177 [ 4.50 ]                | BKT-141-01 |
| -03     | .110 [ 2.79 ] | .098 [ 2.49 ] | .188 [ 4.78 ] | .197 [ 5.00 ]                | BKT-141-03 |
| -04     | .149 [ 3.78 ] | .137 [ 3.48 ] | .227 [ 5.77 ] | .236 [ 5.99 ]                | BKT-141-04 |
| -05     | .189 [ 4.80 ] | .177 [ 4.50 ] | .267 [ 6.78 ] | .276 [ 7.01 ]                | BKT-141-05 |

NOTES:

1. REPRESENTS A CRITICAL DIMENSION.
2. SHEAR TAILS TO DIMENSION AS SHOWN.
3. USE LMP-01 FOR LEAD STYLES -01 & -02. USE LMP-06 FOR STYLES -03, -04 & -05. (SEE FIGURE 4).
4. CENTER TOP VOID CORING MAY OR MAY NOT BE PRESENT.
5. MIN RETENTION: 12 oz.

UNLESS OTHERWISE SPECIFIED,  
DIMENSIONS ARE IN INCHES.

TOLERANCES ARE:

DECIMALS ANGLES  
.XX:  $\pm .01 [ .3 ]$   
.XXX:  $\pm .005 [ .13 ]$   
.XXXX:  $\pm .0020 [ .051 ]$

PROPRIETARY NOTE

THIS DOCUMENT CONTAINS INFORMATION  
CONFIDENTIAL AND PROPRIETARY TO  
SAMTEC, INC. AND SHALL NOT BE REPRODUCED  
OR TRANSFERRED TO OTHER DOCUMENTS OR  
DISCLOSED TO OTHERS OR USED FOR ANY  
PURPOSE OTHER THAN THAT WHICH IT WAS  
OBTAINED WITHOUT THE EXPRESSED WRITTEN  
CONSENT OF SAMTEC, INC.

DO NOT SCALE DRAWING

SHEET SCALE: 4:1

MATERIAL:

INSULATOR: LCP, UL 94 VO, COLOR BLACK.  
TERMINAL: PHOS BRONZE, SPRING TEMPER

F:\DWG\MISC\MKTG\BKT-1XX-XX-XX-X-XX-MKT.SLDDRW

DESCRIPTION:

1MM C.L. STAGGERED SURFACE MOUNT TERMINAL STRIP ASSEMBLY

DWG. NO.

BKT-1XX-XX-XX-X-XX

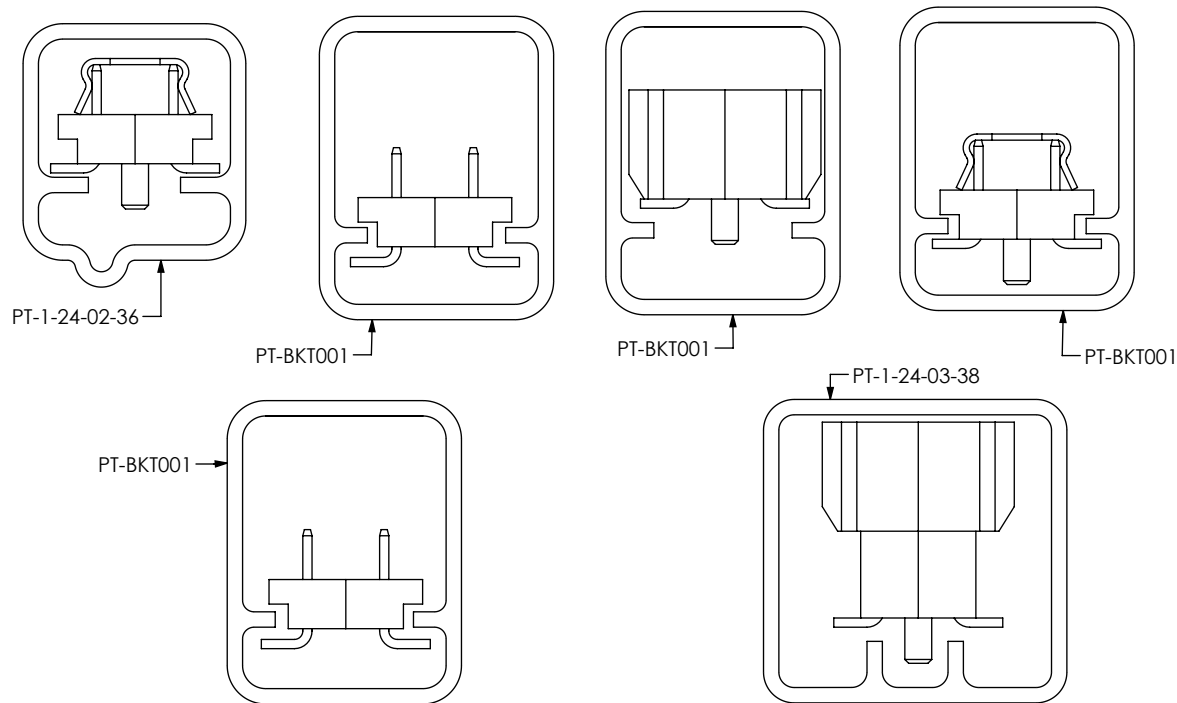
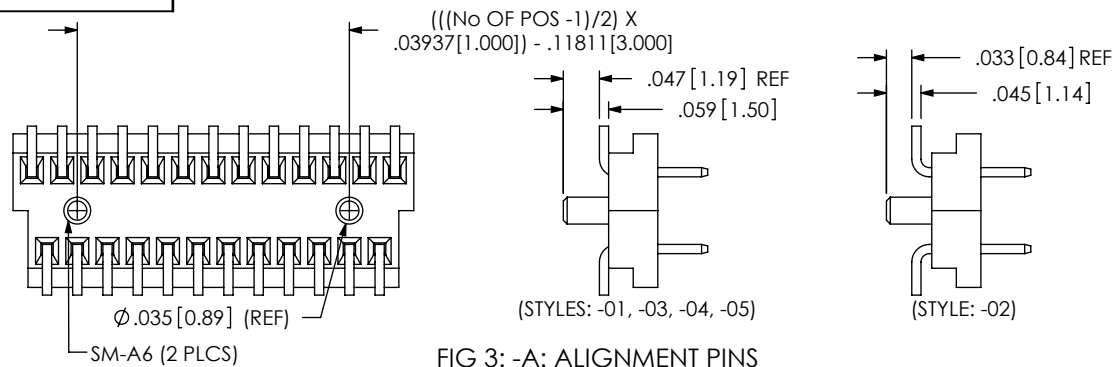
BY: BRATCHER 03/28/95

SHEET 1 OF 2

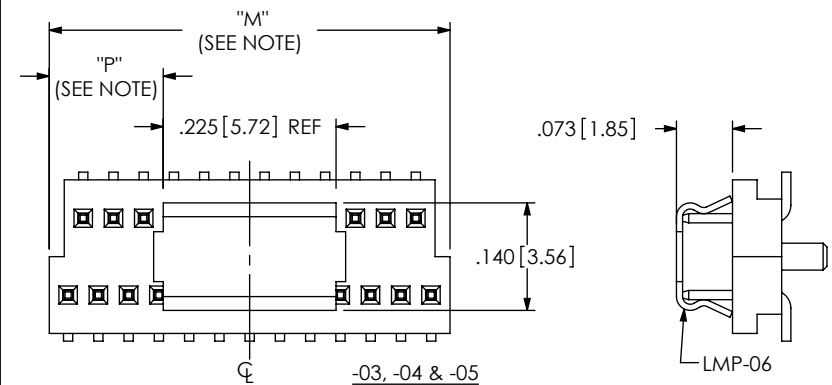
**samtec**

520 PARK EAST BLVD. NEW ALBANY, IN 47150  
PHONE: 812-944-6733 FAX: 812-948-5047  
e-Mail: info@SAMTEC.com code 55322

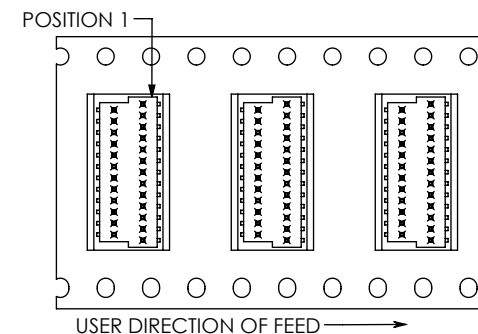




TUBE VIEWS



NOTE:  
"M" = USED MEASURED  
DIMENSION (REF)  
"P" = (( "M" - .225[5.72] ) / 2 )  
± .020[.51]



AY

PROPRIETARY NOTE  
THIS DOCUMENT CONTAINS INFORMATION  
CONFIDENTIAL AND PROPRIETARY TO  
SAMTEC, INC. AND SHALL NOT BE REPRODUCED  
OR TRANSFERRED TO OTHER DOCUMENTS OR  
DISCLOSED TO OTHERS OR USED FOR ANY  
PURPOSE OTHER THAN THAT WHICH IT WAS  
OBTAINED WITHOUT THE EXPRESSED WRITTEN  
CONSENT OF SAMTEC, INC.

DO NOT SCALE DRAWING

SHEET SCALE: 4:1

**samtec**

520 PARK EAST BLVD, NEW ALBANY, IN 47150  
PHONE: 812-944-6733 FAX: 812-948-5047  
e-Mail: info@SAMTEC.com code 55322

DESCRIPTION:  
1MM C.L. STAGGERED SURFACE MOUNT TERMINAL STRIP ASSEMBLY

DWG. NO. **BKT-1XX-XX-XX-X-XX**

BY: BRATCHER 03/28/95

SHEET 2 OF 2