

DESIGNED & DIMENSIONED  
IN MILLIMETERS[INCHES]

DO NOT  
SCALE FROM  
THIS PRINT

BNC5-P-C-XX-ST-CA1

GENDER  
-P: PLUG

TYPE  
-C: CABLE

TERMINATION  
-CAT: CABLE  
(RG174 OR RG316)

ORIENTATION  
-ST: STRAIGHT

PLATING SPECIFICATION

**G** -HN: HEAVY GOLD/NICKEL (SEE NOTE 7 & 8)  
(BNC-FER-002-N)  
(BNC5-FER-001-N)  
(BNC5-PIN-001-H)  
(BNC5-INS-001)  
(SUB-BNC5-P-C-N-ST-CA1)

**G** -GN: GOLD/NICKEL (SEE NOTE 7 & 8)  
(BNC-FER-002-N)  
(BNC5-FER-001-N)  
(BNC5-PIN-001-G)  
(BNC5-INS-001)  
(SUB-BNC5-P-C-N-ST-CA1)

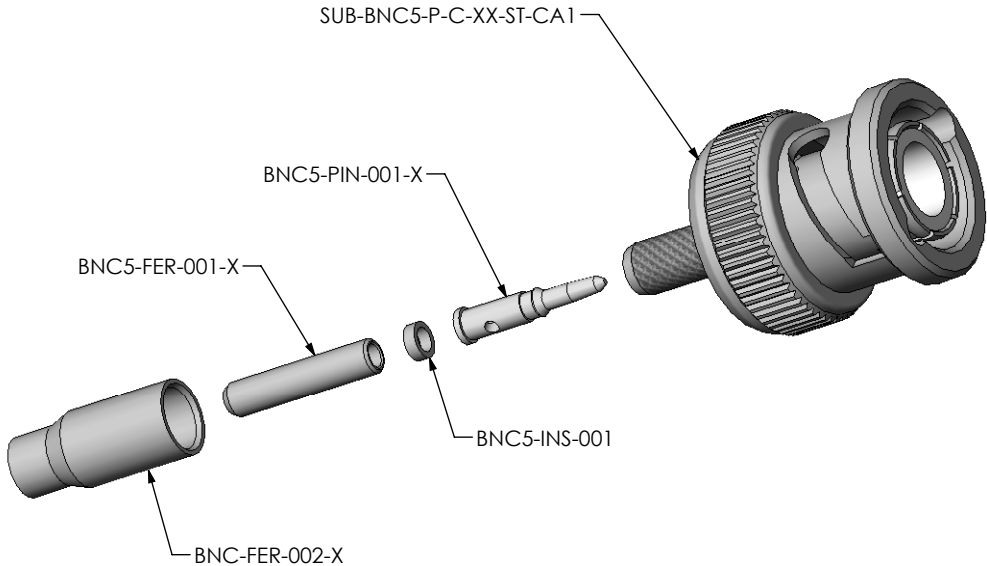



FIG.1  
BNC5-P-C-XX-ST-CA1 SHOWN

NOTES:

1.  REPRESENTS A CRITICAL DIMENSION.
2. CENTER CONTACT PUSHOUT FORCE: 26.69 N [6 LB] MIN.
3. SEE SHEET 3 FOR TERMINATION INFORMATION.
4. NOTE DELETED.
5. PRODUCT TO BE PACKAGED PER PACKAGING STANDARD CO-HD-WI-3040-M
6. RoHS COMPLIANT.
- G** 7. PLATING: -N: .000100" MIN NICKEL.  
-H: .000030" MIN GOLD OVER .000050" MIN NICKEL.  
-G: .000010" MIN GOLD OVER .000050" MIN NICKEL
- G** 8. ASSEMBLY PLATING DESIGNATIONS:  
-HN: (CENTER CONTACT)-H  
(OUTER CONTACT) -N  
(REMAINING METAL PARTS) -N  
-GN: (CENTER CONTACT)-G  
(OUTER CONTACT) -N  
(REMAINING METAL PARTS) -N

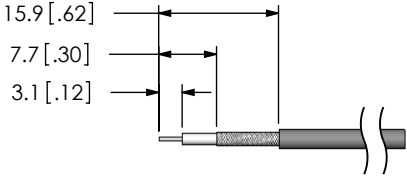
 THIS PRODUCT MANUFACTURED  
WITH LEAD-FREE PROCESSING

F:\DWG\MISC\MKTG\BNC5-P-C-XX-ST-CA1-MKT.SLDDRW

UNLESS OTHERWISE SPECIFIED, DIMENSIONS ARE IN MILLIMETERS [INCHES]. TOLERANCES ARE:	
DECIMALS	ANGLES
.X: $\pm 0.3$ [.01]	2 °
.XX: $\pm 0.13$ [.005]	
.XXX: $\pm 0.051$ [.0020]	
MATERIAL: DO NOT SCALE DRAWING SHEET SCALE: 2:1	
SHELL, FERRULE: BRASS CONTACT: BRASS DIELECTRIC: PTFE	

PROPRIETARY NOTE  
THIS DOCUMENT CONTAINS INFORMATION  
CONFIDENTIAL AND PROPRIETARY TO  
SAMTEC, INC. AND SHALL NOT BE REPRODUCED  
OR TRANSFERRED TO OTHER DOCUMENTS OR  
DISCLOSED TO OTHERS OR USED FOR ANY  
PURPOSE OTHER THAN THAT WHICH IT WAS  
OBTAINED WITHOUT THE EXPRESSED WRITTEN  
CONSENT OF SAMTEC, INC.

RECOMMENDED CABLE STRIPPING

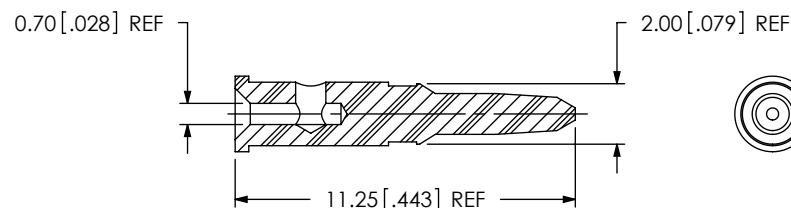


**samtec**

520 PARK EAST BLVD, NEW ALBANY, IN 47150  
PHONE: 812-944-6733 FAX: 812-948-5047  
e-Mail: info@SAMTEC.com code 55322

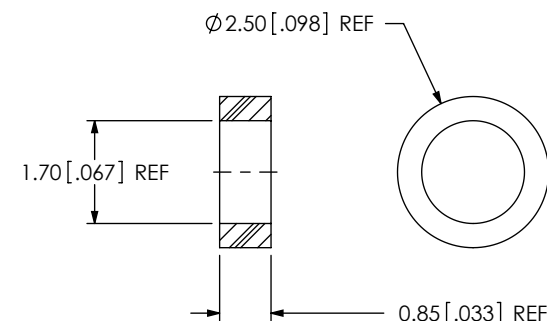
DESCRIPTION: BNC STRAIGHT CABLE PLUG, RG174 & RG316 - 50 OHM	
DWG. NO. BNC5-P-C-XX-ST-CA1	
BY: R MUSSER	12/19/2007
SHEET 1 OF 3	

# REVISION G



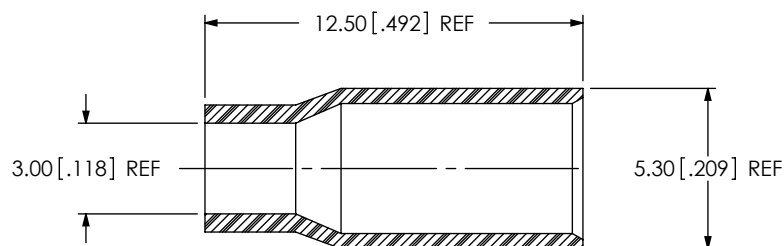
SCALE: 4:1

SAMTEC PART NUMBER	ITEM
BNC5-PIN-001-X	PIN



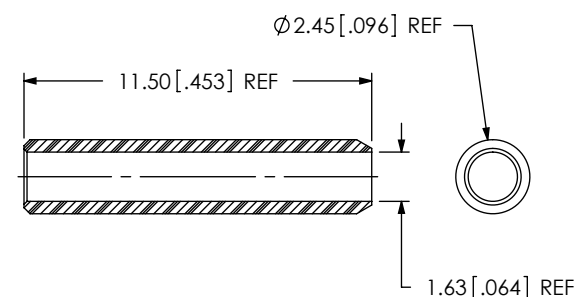
SCALE: 8:1

SAMTEC PART NUMBER	ITEM
BNC5-INS-001	INSULATOR



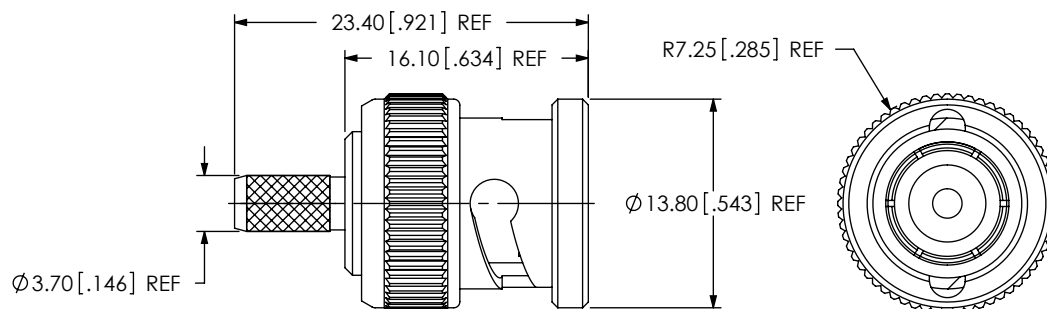
SCALE: 4:1

SAMTEC PART NUMBER	ITEM
BNC-FER-002-X	OUTER FERRULE



SCALE: 4:1

SAMTEC PART NUMBER	ITEM
BNC5-FER-001-X	INNER FERRULE



SAMTEC PART NUMBER	ITEM
SUB-BNC5-P-C-X-ST-CA1	SUB ASSEMBLY

F:\DWG\MISC\WKTG\BNC5-P-C-XX-ST-CA1-MKT.SLDDRW

## PROPRIETARY NOTE

THIS DOCUMENT CONTAINS INFORMATION  
CONFIDENTIAL AND PROPRIETARY TO  
SAMTEC, INC. AND SHALL NOT BE REPRODUCED  
OR TRANSFERRED TO OTHER DOCUMENTS OR  
DISCLOSED TO OTHERS OR USED FOR ANY  
PURPOSE OTHER THAN THAT WHICH IT WAS  
OBTAINED WITHOUT THE EXPRESSED WRITTEN  
CONSENT OF SAMTEC, INC.

DO NOT SCALE DRAWING

SHEET SCALE: 2:1

**samtec**

520 PARK EAST BLVD, NEW ALBANY, IN 47150  
PHONE: 812-944-6733 FAX: 812-948-5047  
e-Mail info@SAMTEC.com code 55322

DESCRIPTION:  
BNC STRAIGHT CABLE PLUG, RG174 & RG316 - 50 OHM

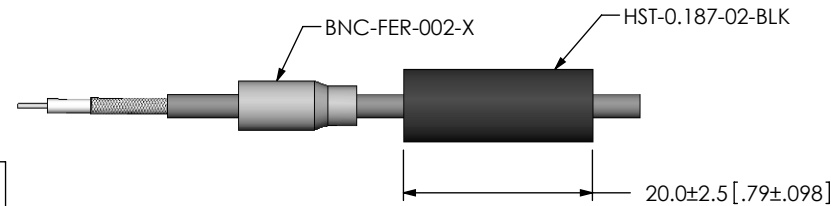
DWG. NO.

BNC5-P-C-XX-ST-CA1

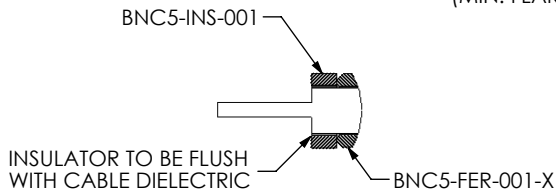
BY: R MUSSER 12/19/2007 SHEET 2 OF 3



STRIP AND TIN INNER CONDUCTOR

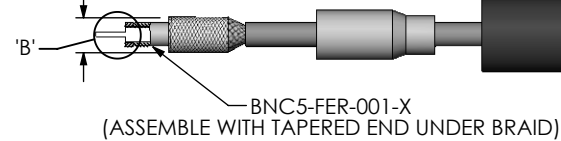


ADD HEAT SHRINK TUBE AND FERRULE

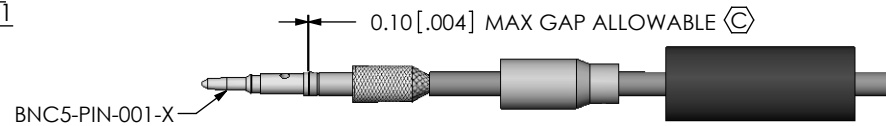


DETAIL 'B'  
SCALE 4:1

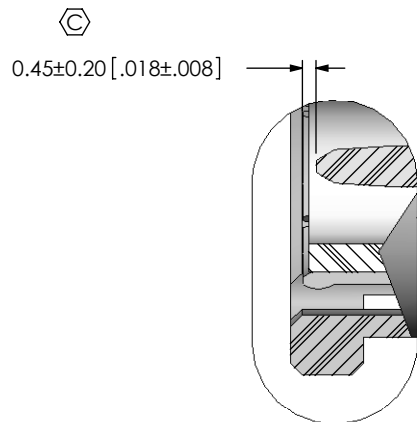
Ø3.70 [.146]  
(MIN. FLARED ID)



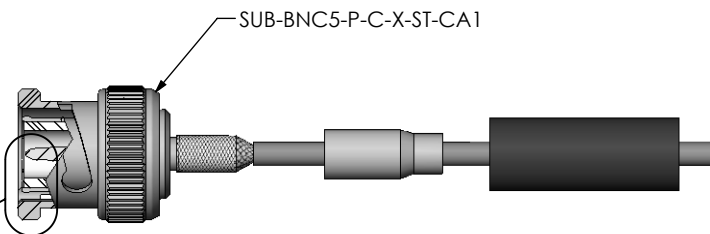
FLARE SHIELD, ADD INNER FERRULE AND INSULATOR



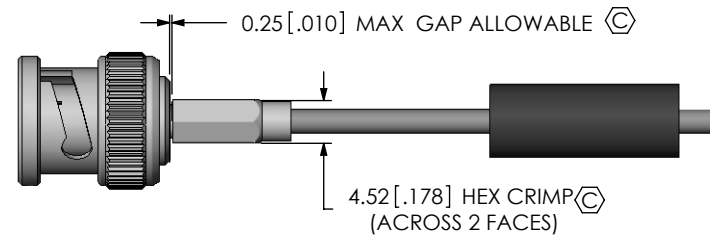
SOLDER SIGNAL PIN



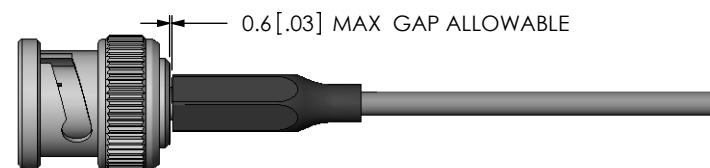
DETAIL 'A'  
SCALE 4:1



ADD SUB-BNC5-P-C-X-ST-CA1



CRIMP FERRULE  
(USE RF CRIMP HAND TOOL #CAT-HT-T26667-21 OR EQUIVALENT)



APPLY HEAT SHRINK TUBE

F:\DWG\MISC\MKTG\BNC5-P-C-XX-ST-CA1-MKT.SLDDRW

**PROPRIETARY NOTE**

THIS DOCUMENT CONTAINS INFORMATION  
CONFIDENTIAL AND PROPRIETARY TO  
SAMTEC, INC. AND SHALL NOT BE REPRODUCED  
OR TRANSFERRED TO OTHER DOCUMENTS OR  
DISCLOSED TO OTHERS OR USED FOR ANY  
PURPOSE OTHER THAN THAT WHICH IT WAS  
OBTAINED WITHOUT THE EXPRESSED WRITTEN  
CONSENT OF SAMTEC, INC.

DO NOT SCALE DRAWING

SHEET SCALE: 1:0.8

**samtec**

520 PARK EAST BLVD, NEW ALBANY, IN 47150  
PHONE: 812-944-6733 FAX: 812-948-5047  
e-Mail: info@SAMTEC.com code 55322

DESCRIPTION:  
BNC STRAIGHT CABLE PLUG, RG174 & RG316 - 50 OHM

DWG. NO.  
**BNC5-P-C-XX-ST-CA1**

BY: R MUSSER 12/19/2007 SHEET 3 OF 3