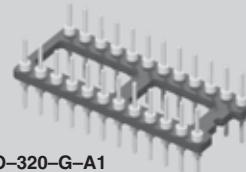




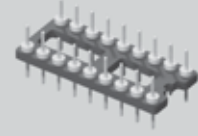
MOLD-TO-POSITION PRODUCT

Minimums or set-up charges may apply. Call Samtec.

APO-320-G-A1



APO-314-T-A



LOW PROFILE ADAPTORS APO SERIES

Mates with:
ICO, ICA, CIC

SPECIFICATIONS

For complete specifications see www.samtec.com/APO

Insulator Material:
Black Glass Filled Polyester
Flammability Rating:
UL 94V-0
Insulation Resistance:
5000 megohm @ 500 VDC
Operating Temp Range:
-55°C to +125°C
Withstanding Voltage:
1000 VRMS @ 60 Hz
Terminal Material:
Brass
Plating:
Au over 50µ" (1,27µm) Ni or Sn over 100µ" (2,54µm) Cu or 50µ" Ni
Current Rating:
1 A



APO

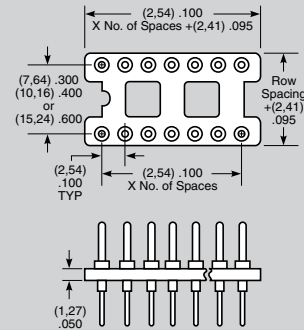
ROW SPACING & NO. OF CONTACTS

PLATING OPTION

LEAD STYLE

Specify from chart below

- Side & end stackable
- Open body design

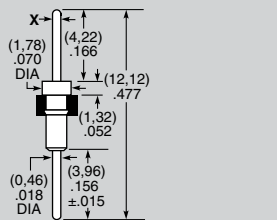


	Row Space	No. of Contacts
-308	.300 (7,62)	08
-314		14
-316		16
-318		18
-320		20
-324	.400 (10,16)	24
-422	.600 (15,24)	22
-624		24
-628		28
-640		40

-G
= 20µ"
(0,58µm) Gold

-T
= Tin

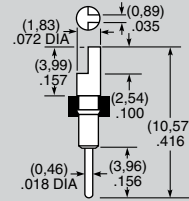
-A or -A1 = Round Pin



STYLE	X DIA
-A	(0,64) .025
-A1	(0,46) .018

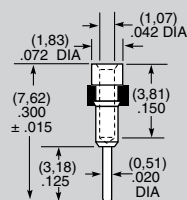
Component No. = T-1R0-
Component No. = T-1R5-

-C = Slotted Head



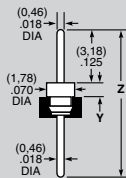
Component No. = T-1R2-

-J = Solder Shell



Component No. = S-1P1-

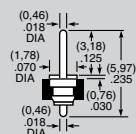
-R or -H = Low Profile



STYLE	Z	Y
-R	(8,43) .332	(8,89) .355
-H	(7,62) .300	(0,51) .020

Style R Component No. = T-2R6-
Style H Component No. = T-1R6-

-T = Short Tail



Component No. = T-3R6-

Note:
Some sizes, styles and options are non-standard, non-returnable.

Due to technical progress, all designs, specifications and components are subject to change without notice.

WWW.SAMTEC.COM