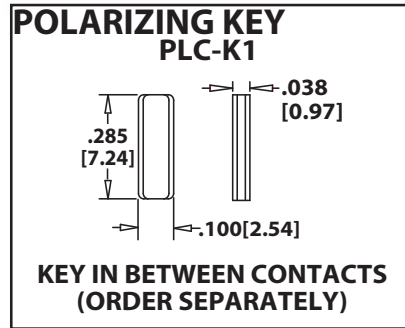
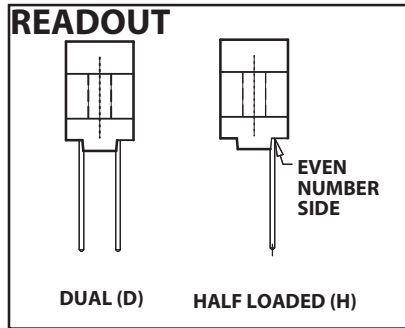
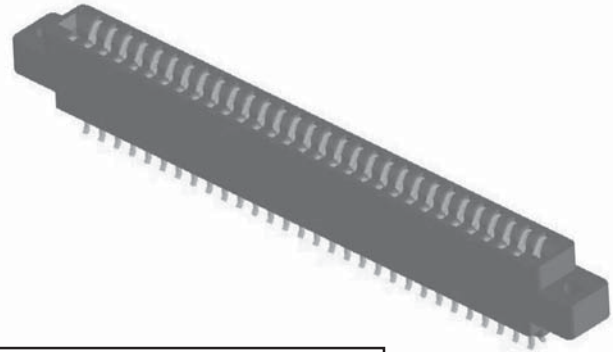




**.125" [3.18 mm] Contact Centers, .610" [15.49 mm] Insulator Height
Dip Solder/Wire Wrap/Right Angle**

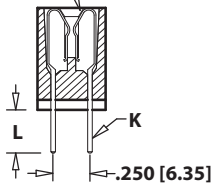
SPECIFICATIONS

- Accommodates .062" ± .008" [1.57 ± .20] PC board (Consult factory for .031" ± .008" [.79 ± .20], See page 52/53 for .093" ± .008" [2.36 ± .20] and .125" ± .008" [3.18 ± .20] PC boards)
- PBT, PPS or PA9T insulator
- Molded-in key available
- 3 amp current rating per contact
- 30 milli ohm maximum at rated current
- Consult Factory for (MBS) Contacts



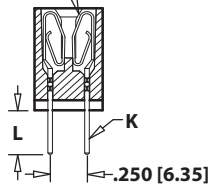
TERMINATION TYPE

HAIRPIN BELLOWS

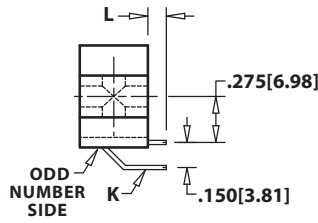


HAIRPIN BELLOWS (CK,CS,CM,CW,CT)

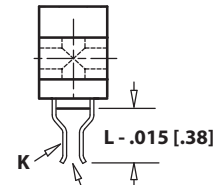
LOOP BELLOWS



LOOP BELLOWS (TK,RS,RM,CK)



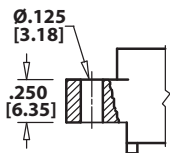
RIGHT ANGLE, DIP SOLDER (CA,CB,CC,TA,TB,TM)



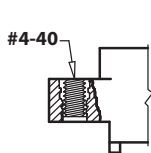
CARD EXTENDER REQUIRES -S288 MODIFICATION CODE (CS,CM,CT,RS,CK,TK,RM)

| HAIRPIN BELLOWS | LOOP BELLOWS | TERMINATION TYPE | POST CROSS SECTION K | POST LENGTH L ± .025 [.64] | FITS MIN. HOLE SIZE |
|-----------------|--------------|------------------|-------------------------|----------------------------|---------------------|
| | TK, CK | DIP SOLDER | .026 [.66] ROUND | .190 [4.83] | .030 [0.76] |
| | RS | DIP SOLDER | .025 [.64] SQUARE | .190 [4.83] | .040 [1.02] |
| CM | RM | WIRE WRAP | .025 [.64] SQUARE | .560 [14.20] | .040 [1.02] |
| CA | TA | RIGHT ANGLE | .025 [.64] SQUARE | .100 [2.54] | .043 [1.09] |
| CB | TB | RIGHT ANGLE | .025 [.64] SQUARE | .180 [4.57] | .043 [1.09] |
| CC | TM | RIGHT ANGLE | .025 [.64] SQUARE | .250 [6.35] | .043 [1.09] |
| CW | | DIP SOLDER | .015 x .025 [.38 x .64] | .125 [3.18] | .035 [0.76] |
| CT | | DIP SOLDER | .015 x .025 [.38 x .64] | .170 [4.32] | .035 [0.76] |
| CS | | DIP SOLDER | .025 [.64] SQUARE | .160 [4.06] | .040 [1.02] |

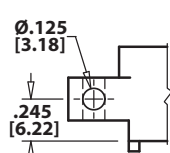
MOUNTING STYLE



CLEARANCE HOLE (H)



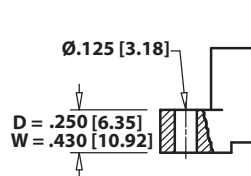
THREADED INSERT (I)



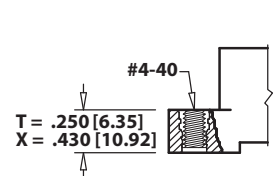
SIDE MOUNTING (S)



NO MOUNTING EARS (N)



FLUSH MOUNTING (D, W)



FLUSH MOUNTING WITH THREADED INSERT (T, X)



.125" [3.18 mm] Contact Centers, .610" [15.49 mm] Insulator Height Dip Solder/Wire Wrap/Right Angle

Sullins Edgecards

PART NUMBER CODING

E B A 50 D CM H - Sxxx

MATERIALS (Insulator/Contact)
 E = PBT/Phosphor Bronze (Standard)
 R = PPS/Phosphor Bronze
 G = PA9T/Phosphor Bronze
 A = PPS/Beryllium Copper
 J = PA9T/Beryllium Copper
 (Consult Factory for Other Materials)

CONTACT FINISH - RoHS Compliant
All platings are Lead Free and have .000050" Nickel underplate

| Contact Surface | Termination |
|-------------------|--------------------------|
| B = .000010" Gold | .000100" Pure Tin, Matte |
| C = .000030" Gold | .000100" Pure Tin, Matte |
| G = .000010" Gold | .000005" Gold |
| Y = .000030" Gold | .000005" Gold |

| Contact Surface | Overall Plating |
|------------------------------|--------------------------|
| S = .000010" Gold | .000010" Gold |
| M = .000030" Gold | .000010" Gold |
| E = .000100" Pure Tin, Matte | .000100" Pure Tin, Matte |

CONTACT CENTERS
 A = .125" [3.18mm]

NUMBER OF CONTACT POSITIONS
 See Chart Below

READOUT (Opposite Page)
 D = Dual
 H = Half Loaded

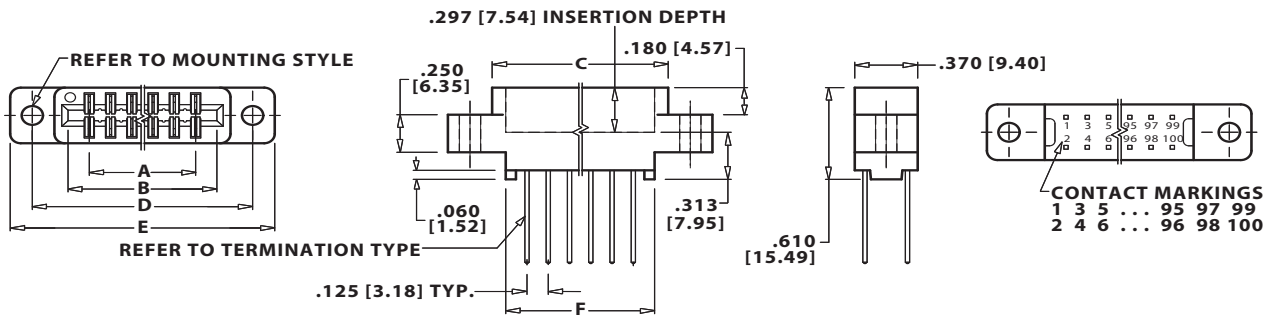
MODIFICATION CODE (Consult Factory)
 OMIT FOR STANDARD
 -S288 = Card Extender Accepts .062" [1.57] PCB

MOUNTING STYLE (Opposite Page)
 H = Clearance Holes
 I = Threaded Inserts
 S = Side Mounting
 N = No Mounting
 W = Flush Mounting
 D = Flush Mounting
 X = Flush Mounting with Threaded Inserts
 T = Flush Mounting with Threaded Inserts

TERMINATION TYPE (Opposite Page)
Hairpin Bellows **
 CS = .025" [0.64mm] Square Dip Solder
 CM = .025" [0.64mm] Square Wire Wrap
 CA, CB, CC = .025" [0.64mm] Square Right Angle
 CW, CT = .015" x .025" [0.38 x .64] Dip Solder
Loop Bellows
 RS = .025" [0.64mm] Square Dip Solder
 CK, TK = .026" [0.66mm] Round Dip Solder
 RM = .025" [0.64mm] Square Wire Wrap
 TA, TB, TM = .025" [0.64mm] Square Right Angle
****Available with B or C plating and Phosphor Bronze Only**

DIMENSIONS

Dimensions in [] are in millimeters, all others are in inches.



Tolerances with PPS Insulator Material may vary slightly due to shrinkage differential: Consult Factory.

| POSITIONS/ CONTACTS | INCHES | | | | | | [MILLIMETERS] | | | | | |
|------------------------|--------|--------|--------|--------|--------|--------|---------------|--------|--------|--------|--------|--------|
| | A±.008 | B±.008 | C±.015 | D±.010 | E±.020 | F±.015 | A±0.20 | B±0.20 | C±0.38 | D±0.25 | E±0.51 | F±0.38 |
| 06/12 | 0.625 | 0.875 | 1.035 | 1.295 | 1.555 | 0.875 | 15.88 | 22.23 | 26.29 | 32.89 | 39.50 | 22.23 |
| 10/20 | 1.125 | 1.375 | 1.535 | 1.795 | 2.055 | 1.375 | 28.58 | 34.93 | 38.99 | 45.59 | 52.20 | 34.93 |
| 14/28 | 1.625 | 1.875 | 2.035 | 2.295 | 2.555 | 1.875 | 41.28 | 47.63 | 51.69 | 58.29 | 64.90 | 47.63 |
| 15/30 | 1.750 | 2.000 | 2.160 | 2.420 | 2.680 | 2.000 | 44.45 | 50.80 | 54.86 | 61.47 | 68.07 | 50.80 |
| 18/36 | 2.125 | 2.375 | 2.535 | 2.795 | 3.055 | 2.375 | 53.98 | 60.33 | 64.39 | 70.99 | 77.60 | 60.33 |
| 22/44 | 2.625 | 2.875 | 3.035 | 3.295 | 3.555 | 2.875 | 66.68 | 73.03 | 77.09 | 83.69 | 90.30 | 73.03 |
| 24/48 | 2.875 | 3.125 | 3.285 | 3.545 | 3.805 | 3.125 | 73.03 | 79.38 | 83.44 | 90.04 | 96.65 | 79.38 |
| 25/50* | 3.000 | 3.250 | 3.410 | 3.670 | 3.930 | 3.250 | 76.20 | 82.55 | 86.61 | 93.22 | 99.82 | 82.55 |
| 28/56 | 3.375 | 3.625 | 3.785 | 4.045 | 4.305 | 3.625 | 85.73 | 92.08 | 96.14 | 102.74 | 109.35 | 92.08 |
| 30/60 | 3.625 | 3.875 | 4.035 | 4.295 | 4.555 | 3.875 | 92.08 | 98.43 | 102.49 | 109.09 | 115.70 | 98.43 |
| 31/62 | 3.750 | 4.000 | 4.160 | 4.420 | 4.680 | 4.000 | 95.25 | 101.60 | 105.66 | 112.27 | 118.87 | 101.60 |
| 32/64 | 3.875 | 4.125 | 4.285 | 4.545 | 4.805 | 4.125 | 98.43 | 104.78 | 108.84 | 115.44 | 122.05 | 104.78 |
| 35/70 | 4.250 | 4.500 | 4.660 | 4.920 | 5.180 | 4.500 | 107.95 | 114.30 | 118.36 | 124.97 | 131.57 | 114.30 |
| 36/72 | 4.375 | 4.625 | 4.785 | 5.045 | 5.305 | 4.625 | 111.13 | 117.48 | 121.54 | 128.14 | 134.75 | 117.48 |
| 40/80 | 4.875 | 5.125 | 5.285 | 5.545 | 5.805 | 5.125 | 123.83 | 130.18 | 134.24 | 140.84 | 147.45 | 130.18 |
| 43/86 | 5.250 | 5.500 | 5.660 | 5.920 | 6.180 | 5.500 | 133.35 | 139.70 | 143.76 | 150.37 | 156.97 | 139.70 |
| 44/88 | 5.375 | 5.625 | 5.785 | 6.045 | 6.305 | 5.625 | 136.53 | 142.88 | 146.94 | 153.54 | 160.15 | 142.88 |
| 49/98 | 6.000 | 6.250 | 6.410 | 6.670 | 6.930 | 6.250 | 152.40 | 158.75 | 162.81 | 169.42 | 176.02 | 158.75 |
| 50/100 | 6.125 | 6.375 | 6.535 | 6.795 | 7.055 | 6.375 | 155.58 | 161.93 | 165.99 | 172.59 | 179.20 | 161.93 |

* Consult factory for availability.