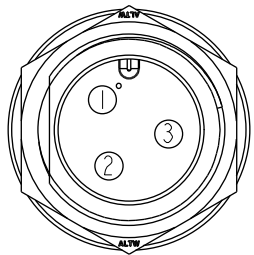
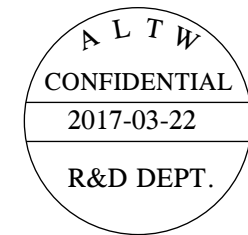
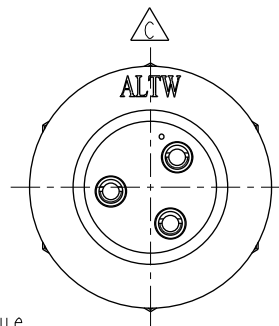
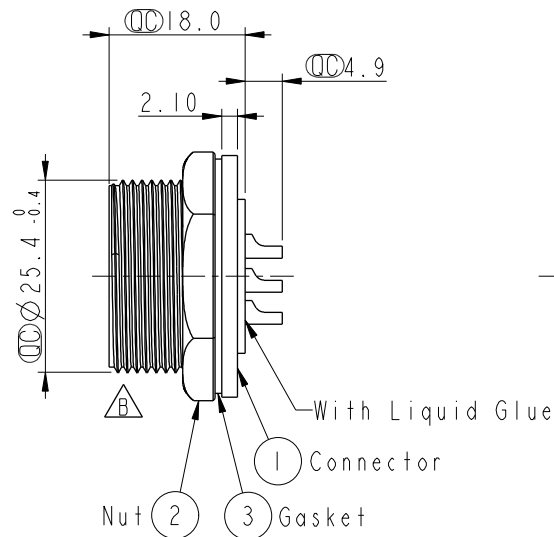
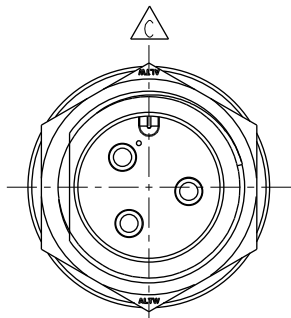
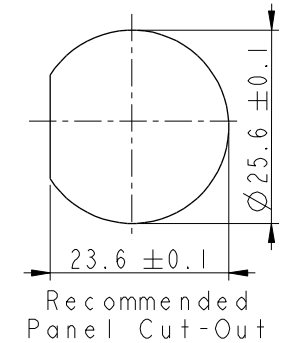
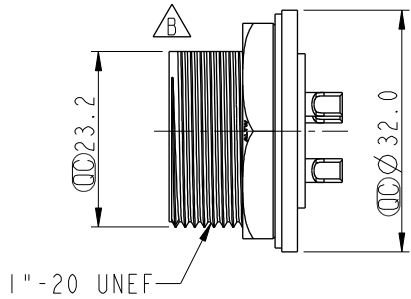


REV.	ECN NO.	DATE	SIGN	DESCRIPTION
B	LEN-810122	2007/11/06	WUFEI	Change sidestep & Note
C	LEN1730334	2017/03/22	Vicky	Update Logo



Pin Assignments
Front View



Note:

- * \varnothing Important Dimension
- * Waterproof Rate: IP67
- * Housing: Nylon+GF, Black
- * Male Pin: Copper Alloy, Gold Plated
- * Nut: Nylon+GF, Black
- * Gasket: EPDM, Black

- $\triangle B$ * Use Waterproof Cap or Dust Cap
Panel Thickness Max: 2.5mm
- $\triangle A$ * Use without Waterproof Cap or Dust Cap
Panel Thickness Max: 4.0mm

UNIT:mm		
TOLERANCE	.X ±0.25	
	.XX ±0.1	
	.XXX ±0.05	
ANGLES	±1°	

TITLE Screw Type Connector For Panel Mount 3Pin Male Connector Male Pin(20A)			
SCALE 1:1	SIZE A4	SHEET 1 OF 1	
REV. C	WC-REV. A.2	\varnothing : Inspection item	

Amphenol LTW
安費諾亮泰企業股份有限公司

ITEM NO DC-03PMMS-SC7001	DRAWN BY Vicky	DATE 2017-03-22
DWG NO DC-03PMMS-SC7001	CHECKED BY Rita	DATE 2017-03-22
CUSTOMER ALTW	APPROVED BY Max	DATE 2017-03-22

THIS DOCUMENT IS SUBJECT TO CHANGE WITHOUT NOTICE. IT IS CONFIDENTIAL AND A PROPERTY OF AMPHENOL LTW. DISCLOSURE TO THIRD PARTY HAS TO BE AUTHORIZED BY AMPHENOL LTW.