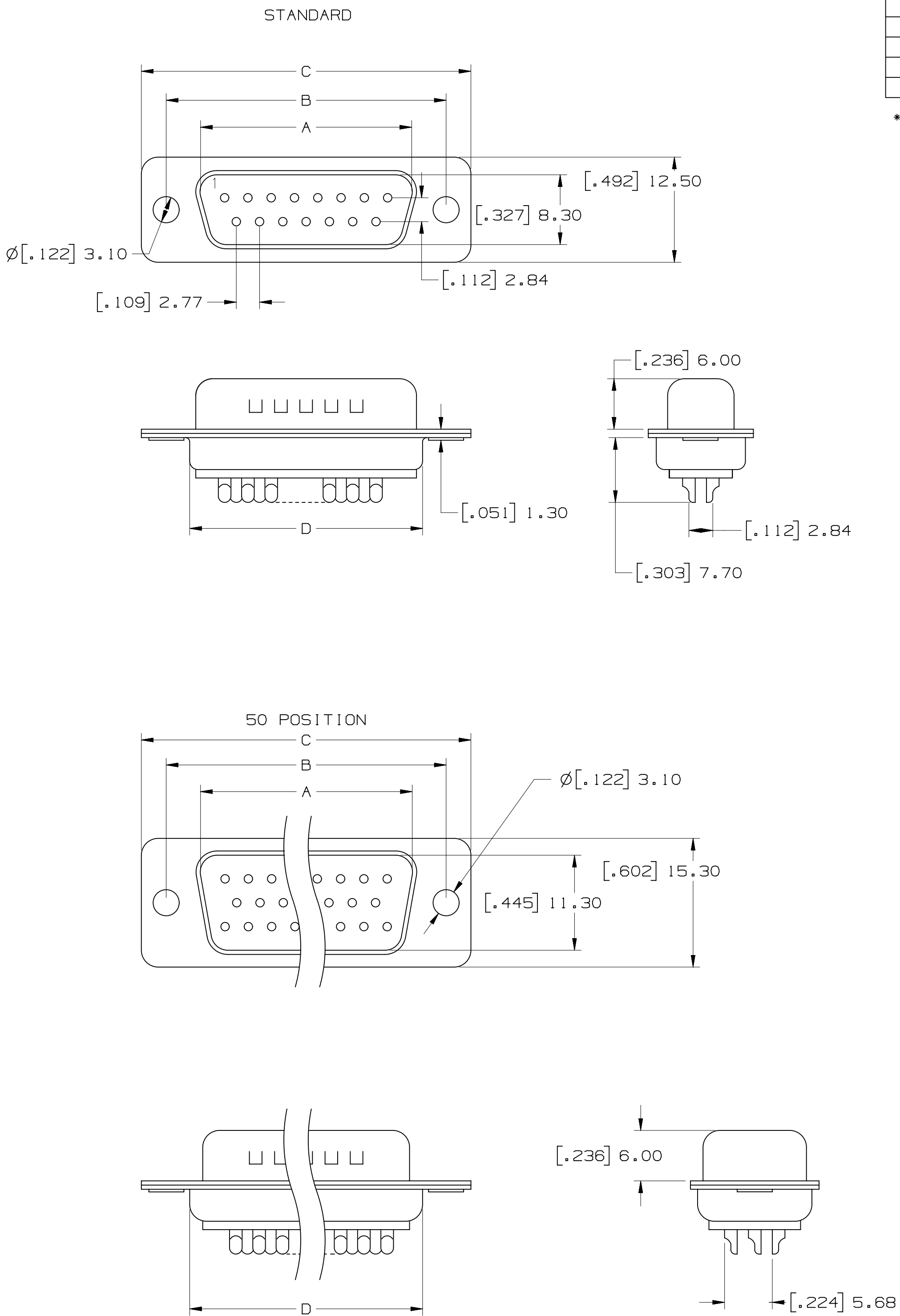


3M™ Solder Cup D Sub Plug, 8000 Series



POSITION	A	B	C	D
09	[.67] 16.92	[.98] 25.0	[1.21] 30.8	[.76] 19.2
15	[.99] 25.25	[1.31] 33.3	[1.54] 39.2	[1.09] 27.7
25	[1.53] 38.96	[1.85] 47.1	[2.09] 53.1	[1.62] 41.1
37	[2.18] 55.42	[2.50] 63.5	[2.73] 69.4	[2.26] 57.3
50*	[2.08] 52.8	[2.41] 61.0	[2.64] 67.0	[2.17] 55.1

*50 POSITION AVAILABLE IN STANDARD ONLY

PERFORMANCE	
OPERATION VOLTAGE:	250VAC MAX.
CURRENT:	3A MAX.
INSULATION RESISTANCE:	3000 MOhm MIN @ 500VDC
WITHSTANDING VOLTAGE:	1000 VAC/ MIN
TEMPERATURE RATING:	-55°C to + 105°C
CONTACT RESISTANCE:	15 mOhms MAX

- NOTES
- MATERIAL:
THERMAL PLASTIC UL94V-0
CONTACTS:
COPPER ALLOY
SHELL:
63141 SPCC OR EQUIVALENT
 - PLATING:
50µ" NICKEL UNDERPLATE
1µ" AU WIPING AREA
30µ" AU WIPING AREA
100-200µ" TIN(BRIGHT TIN)SOLDERTAIL
 - MATES WITH:
8RXX-X00X
 - SEE THE REGULATORY INFORMATION
APPENDIX (RIA) IN "RoHS
COMPLIANCE" SECTION OF
WWW.3MCONNECTOR.COM FOR
COMPLIANCE INFORMATION
(RIA E1&C1 APPLY)

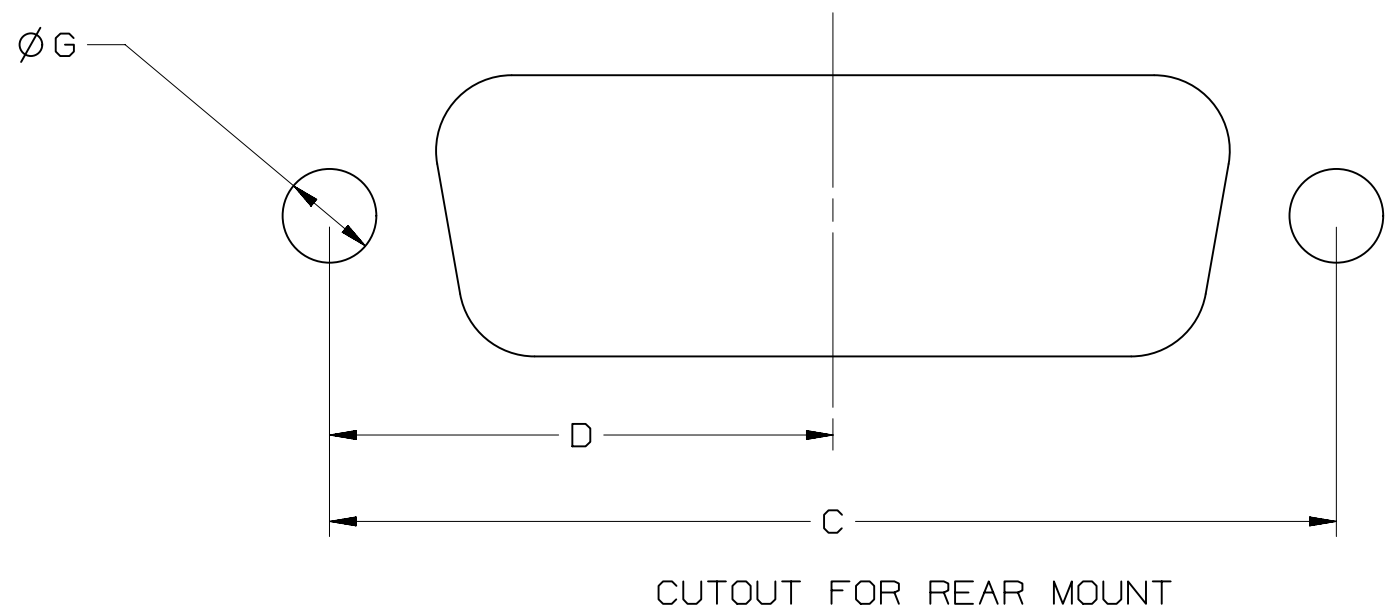
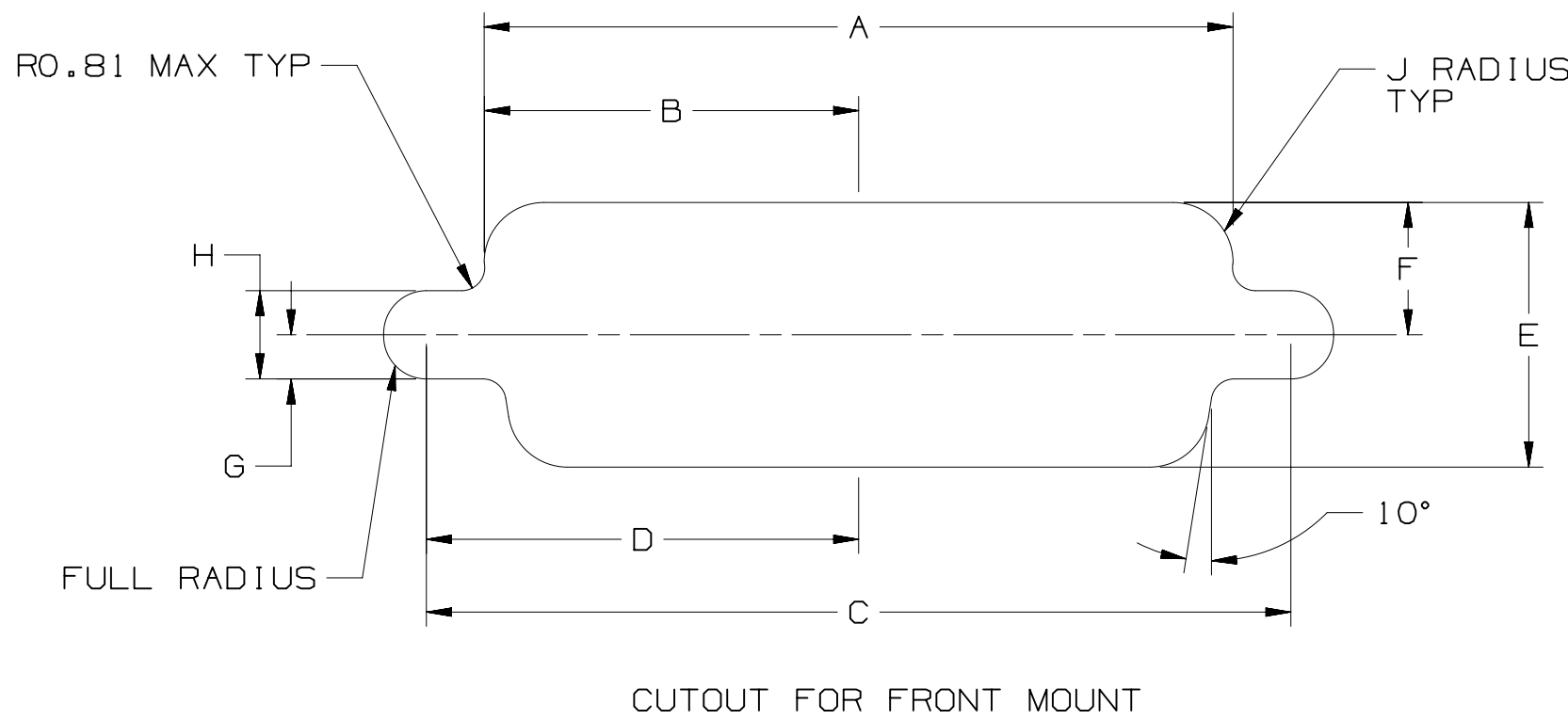
3M ELECTRONIC SOLUTIONS DIVISION
INTERCONNECT SOLUTIONS
<http://www.3mconnectors.com>

3M IS A TRADEMARK OF 3M COMPANY.
FOR TECHNICAL, SALES OR ORDERING
INFORMATION, CALL 800-225-5373

Unless otherwise noted,
references to industry
specifications are intended
to indicate substantial
compliance to the material
elements of the specification.
Such references should not be
construed as a guarantee of
compliance to all requirements
in a given specification.

DESIGN REFERENCE		NEXT ASSEMBLY		REV	ECO	ISSUE DATE AND DESCRIPTION		DRFT	CHKD
DO NOT SCALE DRAWING	SCALE 1/1	TOLERANCES EXCEPT AS NOTED	INCHES	DO NOT SCALE DRAWING	SCALE 1/1	TOLERANCES EXCEPT AS NOTED	INCHES	DO NOT SCALE DRAWING	SCALE 1/1
THIRD ANGLE PROJECTION	INTERPRET PER ASME Y14.5 - 1994	MILLIMETERS	0 ± .1	THIRD ANGLE PROJECTION	INTERPRET PER ASME Y14.5 - 1994	MILLIMETERS	0 ± .1	THIRD ANGLE PROJECTION	INTERPRET PER ASME Y14.5 - 1994
MAX SURFACE ROUGHNESS	125/ ALL SURFACES	0.00 ± .05	0.00 ± .005	MAX SURFACE ROUGHNESS	125/ ALL SURFACES	0.00 ± .05	0.00 ± .005	MAX SURFACE ROUGHNESS	125/ ALL SURFACES
✓	MARKED ONLY	ANGLES ± 1°		✓	MARKED ONLY	ANGLES ± 1°		✓	MARKED ONLY
TITLE				8PXX-X00X D-SUB SOLDER CUP PLUG TS-2357					
CAGE NUMBER				SIZE		DRAWING NO.		REV.	
125				D		78-5100-2357-1		C	
MODEL				DET		YES		SHT 1 OF 2	
8P									

POSITION	MOUNTING METHOD	A	B	C	D	E	F	G	H	J
9	FRONT	.874[22.2]	.437[11.1]	.984[25.0]	.492[12.5]	.513[13.0]	.257[6.5]	.120[3.1]	.060[1.5]	.083[2.1]
	REAR	.806[20.5]	.403[10.2]	.984[25.0]	.492[12.5]	.449[11.4]	.225[5.7]	.120[3.1]	.060[1.5]	.132[3.4]
15	FRONT	1.202[30.5]	.601[15.3]	1.312[33.3]	.656[16.7]	.513[13.0]	.257[6.5]	.120[3.1]	.060[1.5]	.083[2.1]
	REAR	1.134[28.8]	.567[14.4]	1.312[33.3]	.656[16.7]	.449[11.4]	.225[5.7]	.120[3.1]	.060[1.5]	.132[3.4]
25	FRONT	1.743[44.3]	.872[22.2]	1.852[47.0]	.926[23.5]	.513[13.0]	.257[6.5]	.120[3.1]	.060[1.5]	.083[2.1]
	REAR	1.674[42.5]	.837[21.3]	1.852[47.0]	.926[23.5]	.449[11.4]	.225[5.7]	.120[3.1]	.060[1.5]	.132[3.4]
37	FRONT	2.391[60.7]	1.196[30.4]	2.500[63.5]	1.250[31.8]	.513[13.0]	.257[6.5]	.120[3.1]	.060[1.5]	.083[2.1]
	REAR	2.326[59.1]	1.163[29.5]	2.500[63.5]	1.250[31.8]	.449[11.4]	.225[5.7]	.120[3.1]	.060[1.5]	.132[3.4]
50	FRONT	2.297[58.3]	1.149[29.2]	2.406[61.1]	1.203[30.6]	.623[15.8]	.312[7.9]	.120[3.1]	.060[1.5]	.083[2.1]
	REAR	2.218[56.3]	1.109[28.2]	2.406[61.1]	1.203[30.6]	.555[14.1]	.278[7.1]	.120[3.1]	.060[1.5]	.132[3.4]



		C		C 46292		MAR 28, 2013		SJS		ARM	
		B		35416		AUG 29, 2011		SJS		ARM	
		A		34511		MAY 17, 2011		SJS		ARM	
						MAY 17, 2011					
DESIGN REFERENCE				NEXT ASSEMBLY				REV		ECO	
AKSOP								DWT		SJS	
								DATE		MAY 17, 2011	
								MFG		DATE	
								CHKD		ARM	
								DATE		MAY 17, 2011	
								APPR		DATE	
DIVISION				DIVISION CODE							
DO NOT SCALE DRAWING				SCALE 1 1				TOLERANCES EXCEPT AS NOTED			
				THIRD ANGLE PROJECTION				INCHES			
								.00 ±			
								.002 ±			
								.0000 ±			
INTERPRET PER ASME Y14.5 - 1994				MILLIMETERS 0 ±.1				TITLE			
MAX SURFACE ROUGHNESS 125				✓ <input type="checkbox"/> ALL SURFACES <input checked="" type="checkbox"/> MARKED ONLY				8PXX-X00X D-SUB SOLDER CUP PLUG TS-2357			
				ANGLES ±.1 °				CAGE NUMBER			
								SIZE			
								DRAWING NO.			
								REV.			
								D 78-5100-2357-1 C			
								MODEL			
				BP				DET.			
								LISTS			
								YES			
								NO			
								SHT 2 OF 2			

Mouser Electronics

Authorized Distributor

Click to View Pricing, Inventory, Delivery & Lifecycle Information:

3M:

[8P09-E002](#) [8P37-N002](#) [8P15-N002](#) [8P25-N002](#) [8P25-E002](#) [8P15-E002](#) [8P25-E001](#) [8P09-E001](#) [8P50-N002](#)
[8P37-E002](#) [8P50-N001](#) [8P15-E001](#) [8P09-N002](#) [8P37-E001](#)