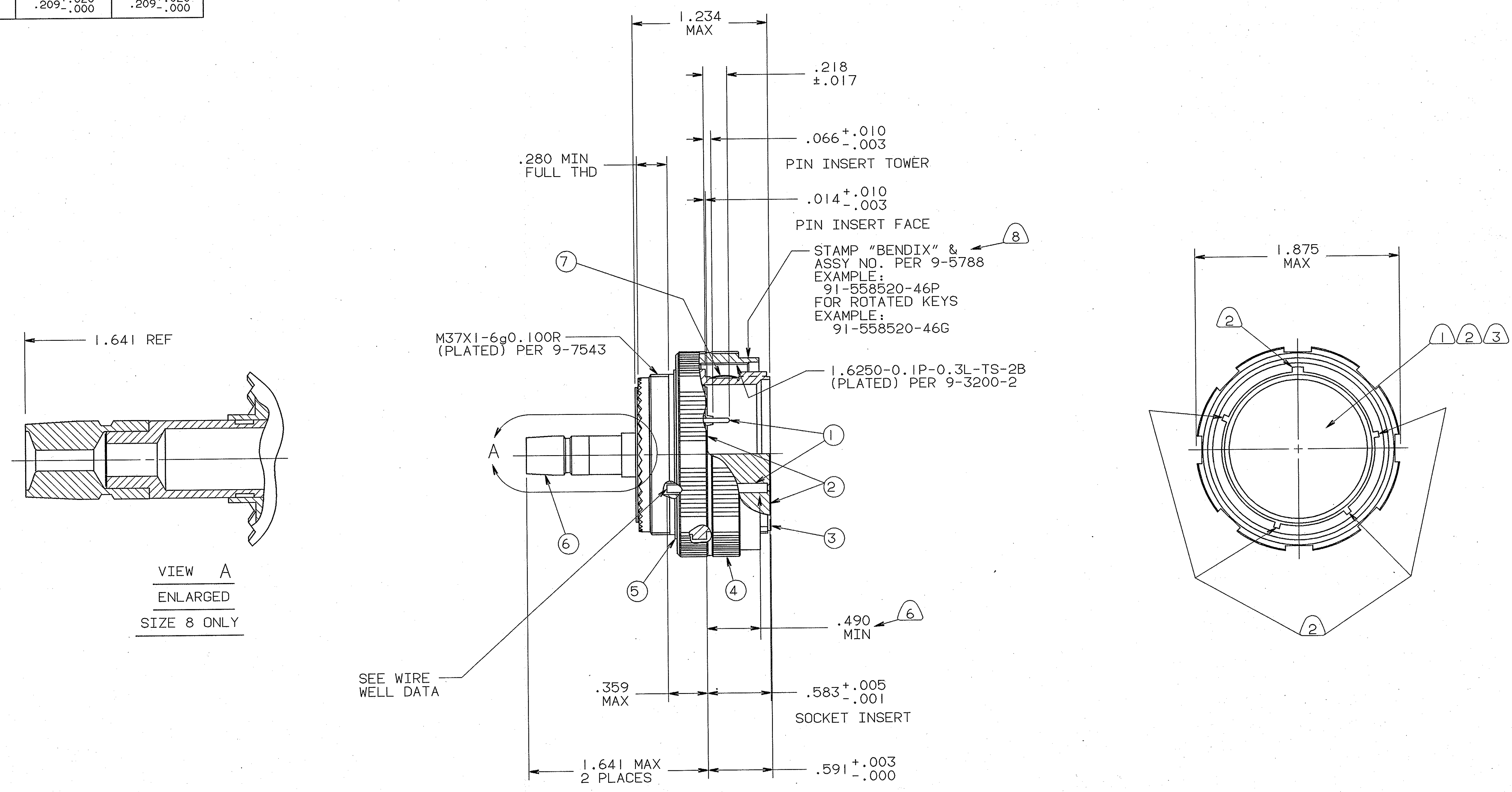


WIRE WELL DATA		
CONTACT SIZE	20	16
WIRE WELL DIA	.047±.001	.067±.001
WIRE WELL DEPTH	.209 ⁺ .020 -.000	.209 ⁺ .020 -.000

REVISIONS				
ZONE	LTR	DESCRIPTION	DATE	APPROVED
	C	(CLII) SEE CHANGE NOTICE ECN: 76640-1	11/15/85 BIVIANO	<i>B. Biviano</i>



VIEW A
ENLARGED
SIZE 8 ONLY

- DISTANCE FROM SHOULDER OF SHELL TO THE POINT AT WHICH A GAGE PIN HAVING THE SAME BASIC DIAMETER AS THE MATING CONTACT & A SQUARE FACE, ENGAGES SOCKET CONTACT SPRING.
- ALTERNATE ROTATIONS ARE OBTAINED BY ROTATING INDICATED KEYS. SIX POSITIONS ARE AVAILABLE. SEE 9-2437-25. ROTATION IDENTIFICATION LETTER APPEARS ON INDICATED SURFACE. NORMAL ROTATION IS NOT IDENTIFIED.
- INSERT ASSEMBLY IS NOT REMOVABLE.
- FOR FINAL INSTALLATION, CONTACTS MUST BE ASSEMBLED INTO ALL INSERT HOLES. ALL UNUSED GROMMET HOLES MUST BE FILLED WITH THE APPROPRIATE SIZE SEALING PLUG 10-405996 (MS27488).
- SEE SEPARATE PARTS LIST FOR COMPONENT PART NUMBERS & QUANTITIES.
- FOR CONTACT ARRANGEMENT PATTERN, SEE DRAWING L-15225-46. COAX DATA & ALTERNATE POSITIONS THEREON DO NOT APPLY.

- SIZE 8 TWINAX CONTACTS 21-33190-22 PIN OR 21-33191-22 SOCKET ARE USED IN PLACE OF SIZE 8 COAX CONTACTS NORMALLY SHIPPED WITH THIS ARRANGEMENT.
- PROCESS SPEC: TEST 9-5044, ASSY 9-5047-4 9-7374-1, 9-4407-13 9-2437-25, 9-5788, 9-3200-2, 9-7543
- UNIT ILLUSTRATED MEETS THE APPLICABLE PERFORMANCE REQUIREMENTS OF MIL-C-38999.
- PACKAGE PER PRODUCTION PROCESS SHEET. SHIP F/N 1 & F/N 6 UNASSEMBLED.
- SEE WORK ORDER FOR PERMISSIBLE ADDITIONAL OR ALTERNATE STAMPING.
- FOR MATING CONNECTOR SEE 91-558521-46(I) & OTHERS.

UNLESS OTHERWISE SPECIFIED
LINEAR DIMENSIONS ARE IN INCHES.
TOLERANCES: .XXX±.010,
.XX ±.03, .X ±.1, ANGLES ±2°.
OTHER STANDARDS PER 9-3800
AND DOD-D-1000. NOTE REF= (XX)

FIND NO.	QTY RECD.	FSCM NO.	PART NUMBER	DESCRIPTION	NOTE REF.
7	1		10-442297-258	GROUND STRAP	
6	2		21-33321-5	INSULATOR ASSY	9
5	1		10-552949-24	SNAP RING	
4	1		10-552934-25G	COUPLING NUT	
3	1		10-538762/767-25H	SHELL	5
2	1		10-538179-46P 10-417325-46S	INSERT	5
1			SEE NOTE 9	CONTACTS	4, 9

SPECIFICATIONS	SIGNATURES	DATES	PARTS LIST
MATERIAL SPEC.	PREPARED RATCHFORD	7/14/83	ALLIED, AMPHENOL PRODUCTS BENDIX CONNECTOR OPERATIONS SIDNEY, N.Y.
	CHECKED CHAPMAN	11/7/83	
	MATERIAL		
PROCESS SPEC.	APPROVED D.A. WERTH	11/7/83	CONNECTOR, ELECTRICAL PLUG, TYPE TVS-RF-25-46(J)MC, ELECTROLESS NICKEL PLATING
SEE NOTE 11	APPROVED V.A. LUCA JR.	11/7/83	
	ORIGINAL RELEASE DATE		

SIZE	D 77820	FSCM NO.	91-558520-46(I)	REV.	C
SCALE	NONE	WT.	REF 91-538249-()	SHEET	

THE USE OF THIS DOCUMENT IS UNLIMITED. HOWEVER, DOCUMENTS REFERENCED HEREON MAY CONTAIN LIMITED RIGHTS DATA.

NEXT ASSEMBLY

COMPUTER GENERATED DRAWING

00000001