

4

3

2

1

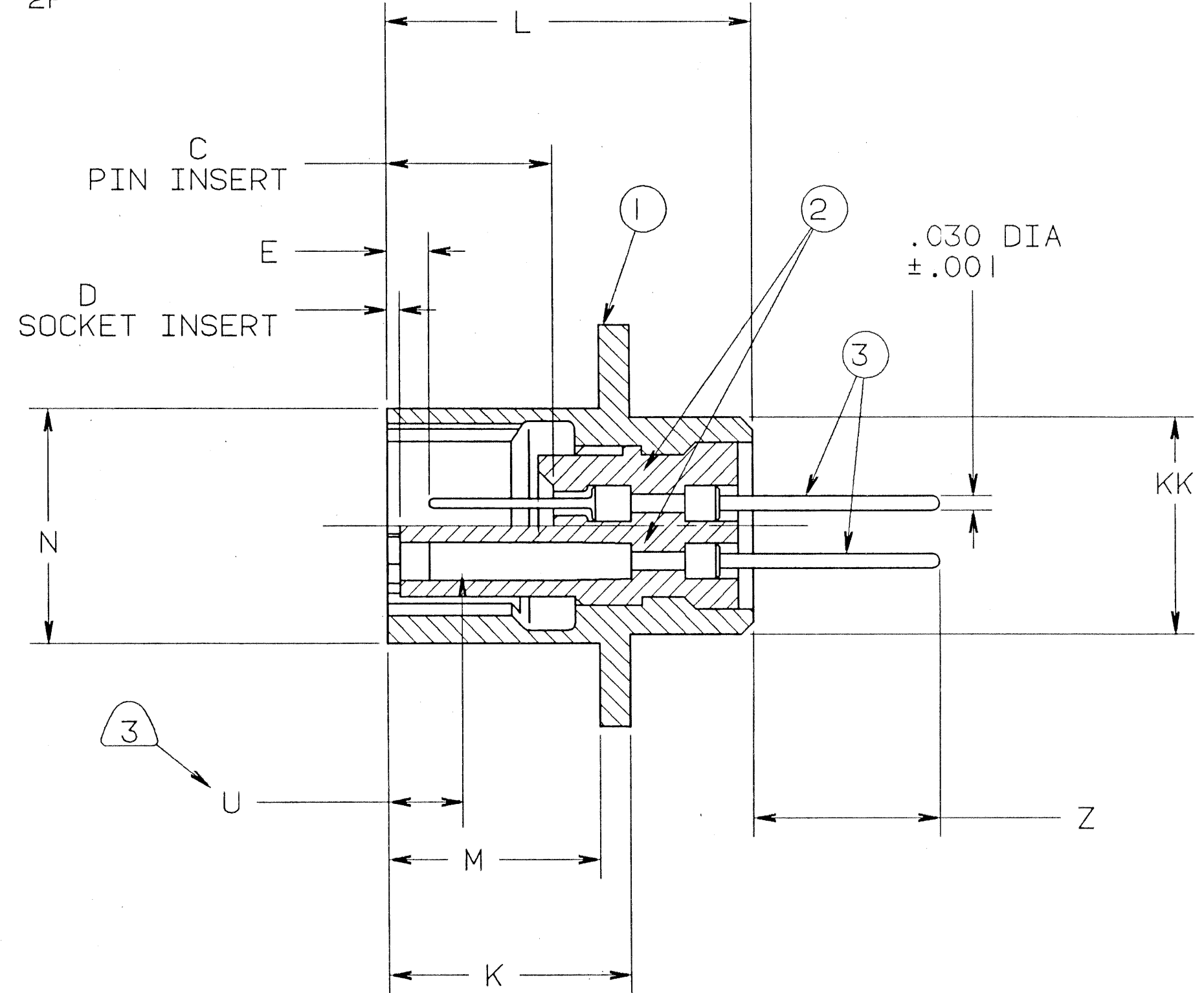
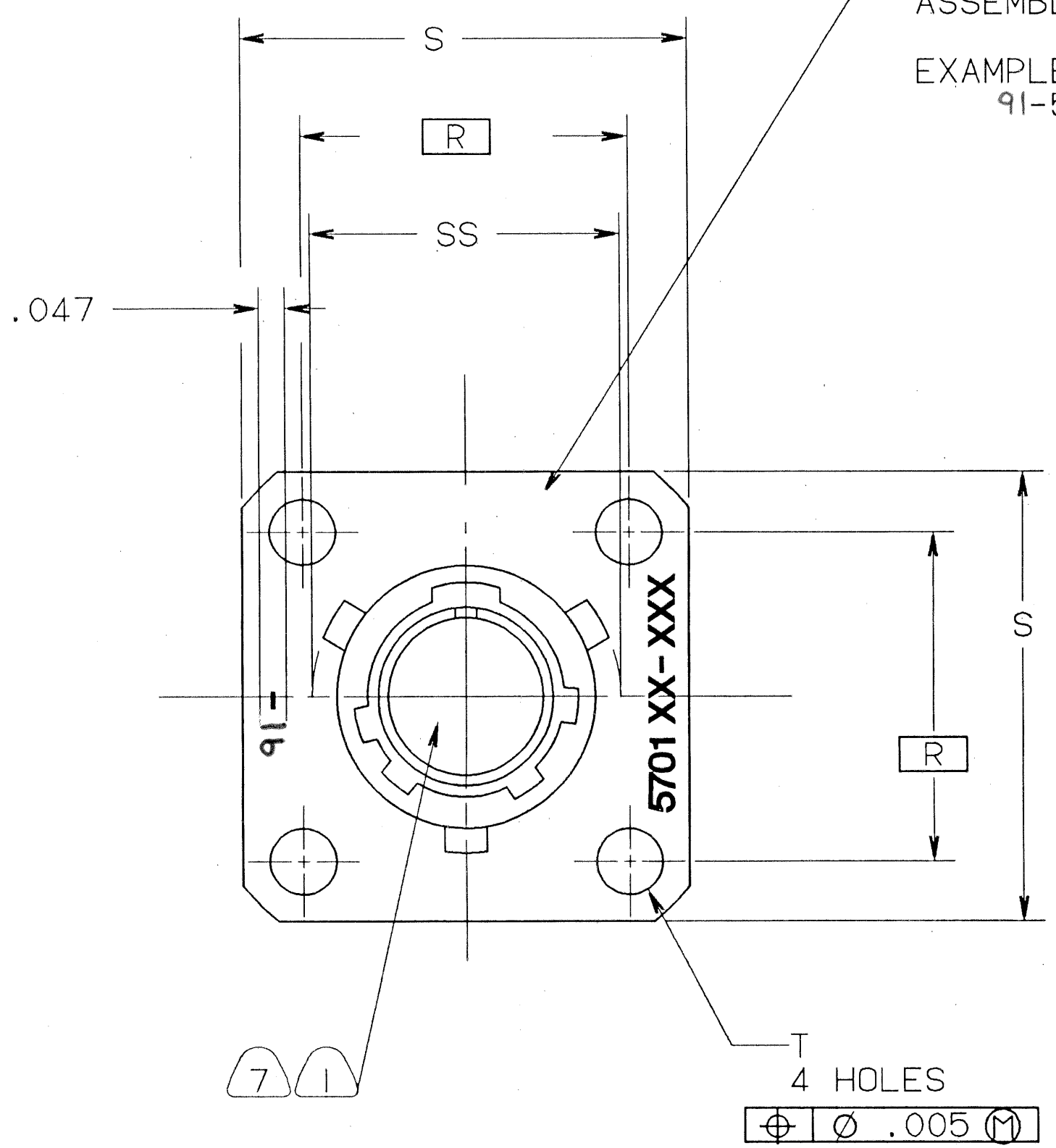
REVISIONS				
ZONE	LTR	DESCRIPTION	DATE	APPROVED
	A	INITIAL RELEASE NUMBER 70098-429		
	B	(CL II) REPLACED 10-497513-01D WITH 10-664164-ADD ECN: A3458	1/14/08 BROOKER	

D

D

STAMP "AMPHENOL" AND ASSEMBLY NO., PER 9-2811

EXAMPLE:
91-570121-2P



C

C

B

B

91-570120/129

A

A

SEE SHEET 2.

NOTES:

THE USE OF THIS DOCUMENT IS UNLIMITED. HOWEVER, DOCUMENTS REFERENCED HEREON MAY CONTAIN LIMITED RIGHTS DATA.

N/A
N/A
NEXT ASSEMBLY

UNLESS OTHERWISE SPECIFIED LINEAR DIMENSIONS ARE IN INCHES.
TOLERANCES: .XXX±.010, .XX ±.03, .X ±.1, ANGLES ±2°. OTHER STANDARDS PER 9-3800 AND DOD-D-1000. NOTE REF. = XX

FIND NO.	QTY REQD.	FSCM NO.	PART NUMBER	DESCRIPTION	NOTE REF.
3	SEE NOTE 9		SEE CONTACT CHART	CONTACT	9
2	1		10-252806/824-()	INSERT	9
1	1		10-150902-XXH	SHELL	

SPECIFICATIONS		SIGNATURES		DATES		PARTS LIST	
MATERIAL SPEC.	N/A	PREPARED	R. BARNES	11/25/98	AMPHENOL CORPORATION AEROSPACE OPERATIONS SIDNEY, N.Y.		
PROCESS SPEC.	SEE NOTE 10.	CHECKED	J. G. MATTHEWS	11/30/98	RECEPTACLE, ELECTRICAL CONNECTOR, TYPE PT-A()FB, NICKEL PLATED (ELECTROLESS)		
		MATERIAL	N/A RB	11/25/98	SIZE	FSCM NO.	91-570120/129
		APPROVED	R. BARNES	11/30/98	SCALE	WT.	REF 71-146206/50
		APPROVED	R. BARNES	11/30/98			SHEET 1 OF 2
		1ST PART NO.					REV. B

UNLESS OTHERWISE SPECIFIED LINEAR DIMENSIONS ARE IN INCHES.

00000001

01800

TAB.

4

3

2

1

ASSEMBLY NUMBER	PT NO. REF	C	D	E	K	L	M	N	R	S	T DIA	U MAX	Z	SS DIA	KK DIA
		+ .010 - .025	+ .010 - .025	+ .010 - .020	+ .021 - .010	± .031	+ .010 - .000	+ .001 - .005		+ .011 - .010	± .005		+ .040 - .050	+ .000 - .016	+ .011 - .000
91-570120-()	02A- 6-()	.337	.025	.085	.493	.743	.431	.348	.469	.688	.120	.153	.380	.439	.312
91-570121-()	- 8-()							.473	.594	.812				.563	.438
91-570122-()	-10-()							.590	.719	.938				.680	.562
91-570123-()	-12-()							.750	.812	1.031				.859	.688
91-570124-()	-14-()							.875	.906	1.125				.984	.812
91-570125-()	-16-()							1.000	.969	1.219				1.108	.938
91-570126-()	-18-()							1.125	1.062	1.312				1.233	1.062
91-570127-()	-20-()	.399	.087	.147	.650	.994	.556	1.250	1.156	1.438		.215	.286	1.358	1.188
91-570128-()	-22-()				.650	.994	.556	1.375	1.250	1.562			.286	1.483	1.312
91-570129-()	-24-()				.683	1.027	.589	1.500	1.375	1.688	.147		.253	1.610	1.438

5

10. PROCESS SPEC:
TEST 9-3353-8
ASSY 9-3443-6

9-2811, 9-2437-1

9. SEE SEPARATE PARTS LIST FOR COMPONENT PART NUMBERS AND QUANTITIES.
8. SEE WORK ORDER FOR PERMISSIBLE ADDITIONAL OR ALTERNATE STAMPING.
7. FOR CONTACT ARRANGEMENTS, SEE L-15206/50.
6. UNITS ILLUSTRATED MEET THE APPLICABLE REQUIREMENTS OF MIL-C-26482.
5. FOR COMPLETE ASSEMBLY NO. & PT NO. REF, ADD APPLICABLE INSERT ARRANGEMENT SUFFIX TO BASE NUMBERS LISTED ABOVE PER 9-2437-1.
4. STAMPING MAY BE ON EITHER SIDE OF FLANGE (ONE SIDE ONLY).
3. DISTANCE BETWEEN END OF SHELL & THE POINT AT WHICH A GAGE PIN, HAVING THE SAME BASIC DIAMETER AS THE MATING CONTACT & A SQUARE FACE, ENGAGES SOCKET CONTACT SPRING.
2. SEE DRAWING 91-146606/50 FOR REQUIRED MATING PLUG ASSEMBLIES.
1. INSERTS & CONTACTS MUST NOT BE REMOVED.

NOTES:

CONTACTS	
16S PIN	10-247920-161
16S SOCKET	10-247922-161
16L PIN	10-247924-161
16L SOCKET	10-247926-161
20S PIN	10-497512-1D
20S SOCKET	SEE NOTE 9
20L PIN	10-497534-1D
20L SOCKET	10-597859 -A55

SIZE	FSCM NO.	REV.
C	77820	B
SCALE	WT.	REF
		SHEET
		2

91-570120/129