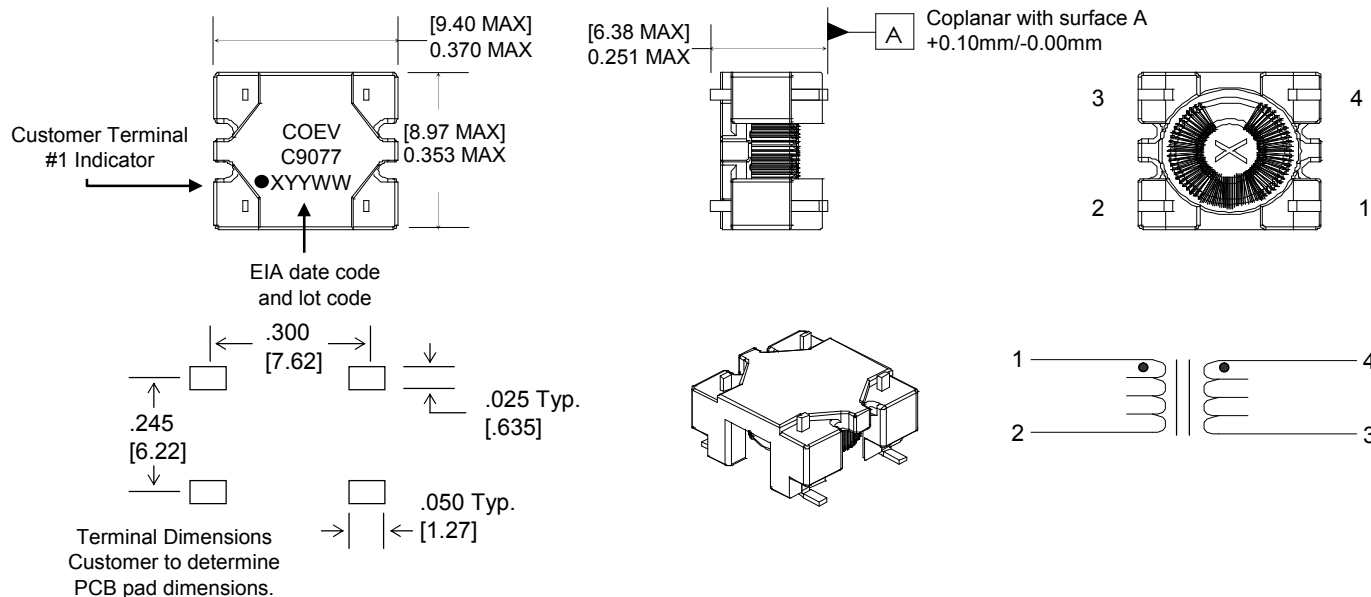


C9077**REV**
D**COEV**
MAGNETICS

tyco Electronics

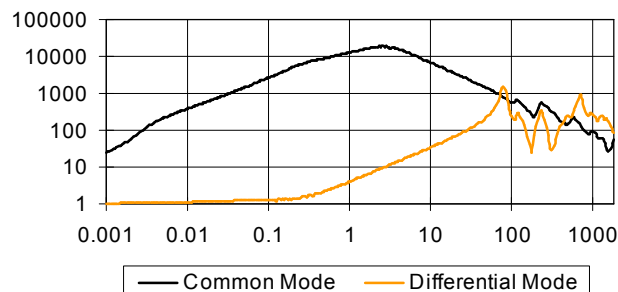
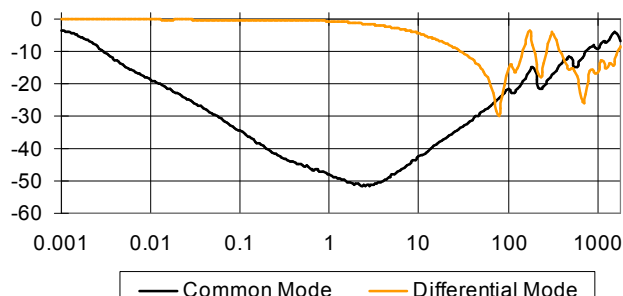
**Product
Description****5.0mH Single Common Mode Choke
Data and Signal Applications**

Information subject to change without notice. 07/04

Primary units are in inches. Millimeters are in brackets.

Electrical Specifications at +20°C unless noted otherwise

Test Description	Limit	Units	Tol	Notes
Inductance	5.00	mH	±35%	1-2, 10kHz, 100mVAC, Ls.
DC Resistance	0.9	Ω	Max.	1-2
DC Resistance	0.9	Ω	Max.	4-3
Turns Ratio	1.00 : 1.00	---	±2%	(1-2) : (4-3), 10kHz, 100mVAC.
Dielectric	500	VDC	500μA	1 second test, 500μA maximum leakage current.
Interwinding Capacitance	35	pF	Max.	1-4 tie(1+2,4+3), 100kHz, 100mVAC, Cs.

Typical Impedance (Ohms)**Typical Attenuation (dB)**

The information contained in this drawing is the sole property of CoEv, Inc. Any reproduction or use without the written permission of CoEv, Inc. is prohibited.

TEL 888-978-2638 - FAX 605-886-8995 - Specifications subject to change without notice. For latest revision visit www.tycopowercomponents.com