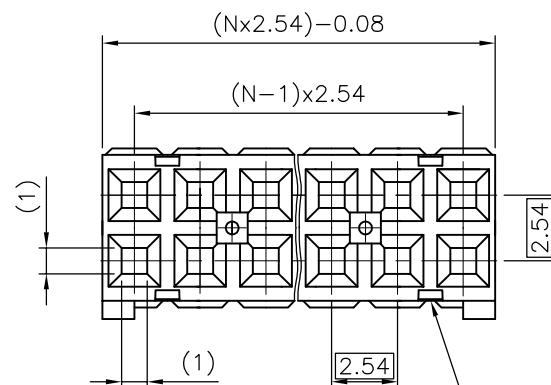


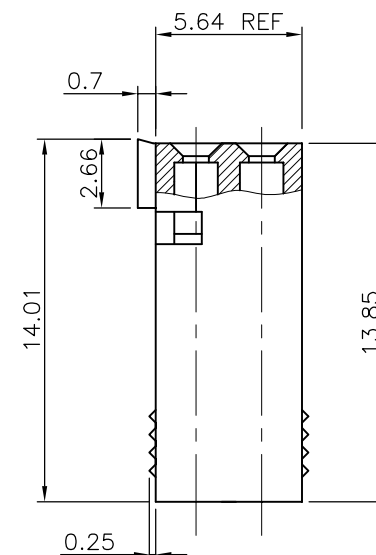
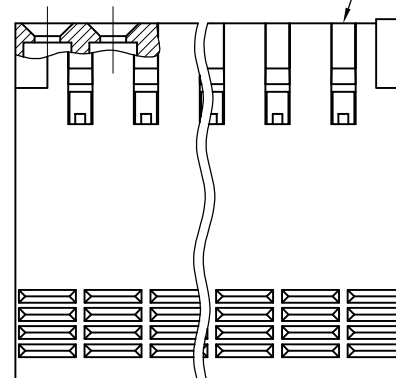
PRODUCT NUMBER

65239-YXXLF

WHEN NEEDED, SUFFIX LETTER "LF"
INDICATES THE PRODUCT IS RoHS
COMPLIANT, SEE NOTE 6
NUMBER OF CAVITIES PER ROW : 02 TO 36.
PLASTIC MATERIAL COLOR CODE.
0 = BLUE
1 = GREY



SEE NOTE 2



NOTES:

- 1 - HOUSING MAT'L: THERMOPLASTIC GLASS FILLED
FLAME RETARDANT PER UL 94 V-O.
- 2 - OVER DASH -007 ONLY FIRST AND
LAST THREE POSITIONS MUST HAVE
GROOVES ON TWO SIDES.
- 3 - PRODUCT PACKED IN PLASTIC BAG.
- 4 - TO DETERMINE DIMENSIONS:
N = NUMBER OF POSITIONS
EXAMPLE: 8 POS: $(N \times 2.54) - 0.08 = 20.24$ mm.
- 5 - FOR TECHNICAL APPLICATION SEE TA317.
- 6 - RoHS COMPATIBLE PRODUCT SPECIFICATIONS

a - LABELING:

- MEETS PACKAGING SPECS AS PER GS-14-920

b - LEGAL STATEMENT: SEE GS-22-008

THE PRODUCT IS NOT INTENDED TO BE EXPOSED TO A
MANUFACTURING SOLDER PROCESS.

mat'l. code				surface	tolerance	projection	product family
SEE NOTE				ISO 1302	ISO 406	ISO 1101	DUBOX
ltr	ecn	no	dr	date	tolerances unless otherwise specified		title
M	F05-0236	DLE		05.08.24	angles	± 0.3	CtW HOUSING DR
N	F05-0286	DLE		05.11.07	linear		
P	F06-0146	DLE		06.03.10	$\pm 2'$	scale 5:1	dwg no
R	F06-0225	DLE		06.07.07	dr	L.MULIN	00.08.30
					engr	P.NIZZI	00.08.30
K	F04-0347	DLE		04.12.10	chr	JF.NOTTEAU	00.08.30
L	F05-0169	DLE		05.04.07	appd	P.NZ	00.08.30
sheet	revision						type
index	sheet						CUSTOMER Drawing

