

Distributed by:

JAMECO[®]
ELECTRONICS

www.Jameco.com ♦ 1-800-831-4242

The content and copyrights of the attached
material are the property of its owner.

Jameco Part Number 524787



MTA-100 Connectors (Continued)

MTA-100 IDC Receptacle Connectors — Closed End and Feed-Thru

Material and Finish:

Housing — UL94V-2 rated, type 6/6 nylon, see below for color; or UL94V-0 rated, nylon, black

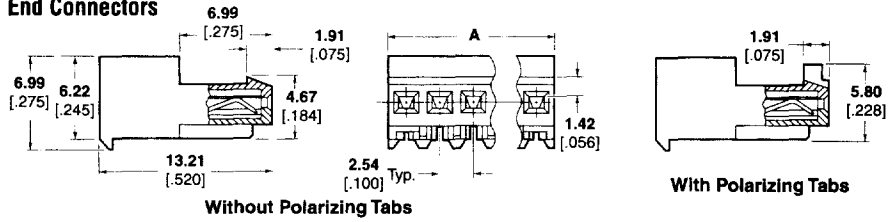
Contacts — Phosphor bronze, post plated 0.00076 [0.00030] or 0.00038 [0.00015] post gold-plated over nickel

UL94V-2 Color Coding by Wire Size:

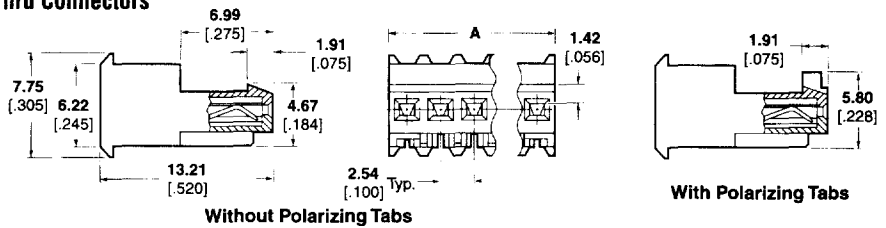
- 28 AWG—Green
- 26 AWG—Blue
- 24 AWG—White
- 22 AWG—Red

UL94V-0—Black

Closed End Connectors



Feed-Thru Connectors



Connector Type & Wire Size	No. of Circuits	Dim. A	Closed End		Feed-Thru	
			Without Tabs Part Nos.	With Tabs Part Nos.	Without Tabs Part Nos.	With Tabs Part Nos.
Standard UL94V-2, Tin Plated						
22 AWG [0.3-0.4 mm ²]	2	5.08 [0.200]	640440-2	643813-2	640620-2	644540-2
	3	7.62 [0.300]	640440-3	643813-3	640620-3	—
	4	10.16 [0.400]	640440-4	643813-4	640620-4	644540-4
	5	12.7 [0.500]	640440-5	643813-5	640620-5	644540-5
	6	15.24 [0.600]	640440-6	643813-6	640620-6	—
	7	17.78 [0.700]	640440-7	643813-7	640620-7	—
	8	20.32 [0.800]	640440-8	643813-8	640620-8	—
	9	22.86 [0.900]	640440-9	643813-9	—	—
	10	25.4 [1.00]	—	1-643813-0	1-640620-0	—
	11	27.94 [1.100]	—	1-643813-1	—	—
	12	30.48 [1.200]	—	1-643813-2	—	—
	13	33.02 [1.300]	—	1-643813-3	—	—
	14	35.56 [1.400]	—	1-643813-4	1-640620-4	—
	20	50.8 [2.000]	2-640440-0	2-643813-0	2-640620-0	2-644540-0
24	60.96 [2.400]	2-640440-4	2-643813-4	—	—	
24 AWG [0.2 mm ²]	2	5.08 [0.200]	640441-2	643814-2	640621-2	—
	3	7.62 [0.300]	640441-3	643814-3	640621-3	644563-3
	4	10.16 [0.400]	640441-4	643814-4	—	—
	5	12.7 [0.500]	640441-5	643814-5	—	644563-5
	6	15.24 [0.600]	640441-6	643814-6	640621-6	644563-6
	7	17.78 [0.700]	640441-7	643814-7	640621-7	—
	8	20.32 [0.800]	640441-8	643814-8	640621-8	644563-8
	9	22.86 [0.900]	640441-9	643814-9	—	—
	10	25.4 [1.00]	1-640441-0	1-643814-0	—	—
	11	27.94 [1.100]	1-640441-1	1-643814-1	—	—
	12	30.48 [1.200]	1-640441-2	1-643814-2	—	—
	13	33.02 [1.300]	1-640441-3	—	—	—
	14	35.56 [1.400]	1-640441-4	—	—	—
	15	38.1 [1.500]	1-640441-5	—	—	—
16	40.64 [1.600]	1-640441-6	1-643814-6	—	—	
20	50.8 [2.000]	2-640441-0	—	—	—	
24	60.96 [2.400]	2-640441-4	—	—	—	
Tape Mounted on Reel UL94V-2, Tin Plated						
22 AWG [0.3-0.4 mm ²]	2	5.08 [0.200]	—	644511-2	—	—
	3	7.62 [0.300]	640468-3	644511-3	—	—
	8	20.32 [0.800]	640441-8	644511-8	—	—
24 AWG [0.2 mm ²]	3	7.62 [0.300]	640469-3	—	—	—
26 AWG [0.12-0.15 mm ²]	2	6.08 [0.200]	640470-2	—	—	—



MTA-100 Connectors (Continued)

MTA-100 IDC Receptacle Connectors — Closed End and Feed-Thru (Continued)

Connector Type & Wire Size	No. of Circuits	Dim. A	Closed End		Feed-Thru		
			Without Tabs	With Tabs	Without Tabs	With Tabs	
			Part Nos.	Part Nos.	Part Nos.	Part Nos.	
Standard UL94V-2, 0.00076 [.000030] Gold Plated							
22 AWG [0.3-0.4 mm ²]	2	5.08 [.200]	641237-2	644042-2	—	—	
	3	7.62 [.300]	641237-3	644042-3	—	—	
	4	10.16 [.400]	641237-4	644042-4	—	—	
	5	12.7 [.500]	641237-5	644042-5	—	—	
	6	15.24 [.600]	—	644042-6	—	—	
	7	17.78 [.700]	641237-7	—	—	—	
	8	20.32 [.800]	641237-8	644042-8	—	—	
	10	25.4 [1.00]	—	1-644042-0	—	—	
	12	30.48 [1.200]	—	1-644042-2	—	—	
	24 AWG [0.2 mm ²]	2	5.08 [.200]	641238-2	644020-2	—	—
		3	7.62 [.300]	641238-3	644020-3	—	—
		4	10.16 [.400]	641238-4	644020-4	—	—
5		12.7 [.500]	641238-5	644020-5	—	—	
6		15.24 [.600]	641238-6	—	—	—	
7		17.78 [.700]	641238-7	—	—	—	
8		20.32 [.800]	641238-8	—	—	—	
24 AWG [0.2 mm ²]		2	5.08 [.200]	641239-2	644043-2	—	—
	3	7.62 [.300]	641239-3	644043-3	—	—	
	5	12.7 [.500]	—	644043-5	—	—	
Standard UL94V-2, 0.00038 [.000015] Gold Plated							
22 AWG [0.3-0.4 mm ²]	2	5.08 [.200]	641190-2	644038-2	—	—	
	3	7.62 [.300]	641190-3	—	—	—	
	4	10.16 [.400]	641190-4	—	—	—	
	5	12.7 [.500]	641190-5	—	—	—	
	6	15.24 [.600]	641190-6	—	—	—	
	7	17.78 [.700]	641190-7	—	—	—	
	8	20.32 [.800]	641190-8	—	—	—	
	10	25.4 [1.00]	1-641190-0	—	—	—	
	12	30.48 [1.200]	641190-2	—	—	—	
	15	38.1 [1.500]	641190-5	—	—	—	
	24 AWG [0.2 mm ²]	2	5.08 [.200]	641191-2	—	—	—
		3	7.62 [.300]	641191-3	—	—	—
4		10.16 [.400]	641191-4	—	—	—	
6		15.24 [.600]	641191-6	—	—	—	
2		5.08 [.200]	641192-2	—	—	—	
3		7.62 [.300]	641192-3	—	—	—	
26 AWG [0.12-0.15 mm ²]	5	12.7 [.500]	641192-5	—	—	—	
	10	25.4 [1.00]	1-641192-0	—	—	—	
	16	40.64 [1.600]	1-641192-6	—	—	—	
	Standard UL94V-0, Tin Plated (Gold is available, minimums may apply.)						
22 AWG [0.3-0.4 mm ²]	2	5.08 [.200]	—	644083-2	—	—	
	3	7.62 [.300]	—	644083-3	—	—	
	6	15.24 [.600]	—	644083-6	—	—	
	13	33.02 [1.300]	—	1-644083-3	—	—	
24 AWG [0.2 mm ²]	2	5.08 [.200]	—	644312-2	—	—	

Power

Cabled Power Connectors



MTA-100 Connectors (Continued)

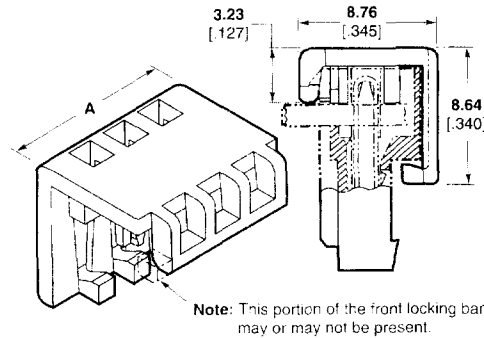
MTA-100 IDC Receptacle Connector Accessories

Material:

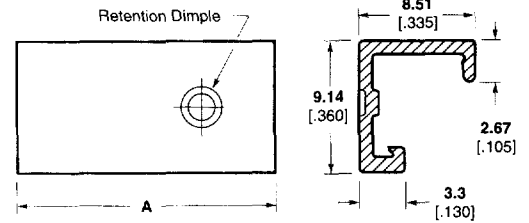
Strain Relief Cover — UL94V-2 rated, nylon, white

Dust Covers — UL94V-0 rated, polyester, white

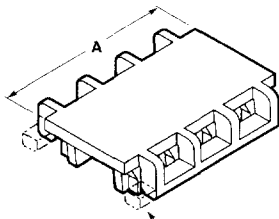
Closed End Strain Relief Covers



Closed End Dust Covers

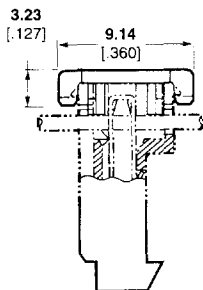
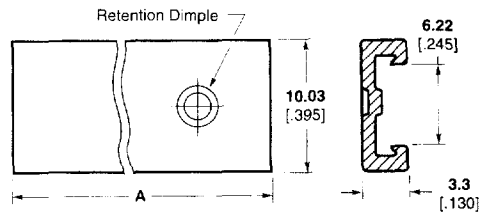


Feed-Thru Strain Relief Covers



Note: This portion of the front locking bar may or may not be present.

Feed-Thru Dust Covers



No. of Circuits	Dim. A	Closed End		Feed-Thru	
		Strain Relief Covers	Dust Covers	Strain Relief Covers	Dust Covers
2	5.08 [.200]	643075-2	1-640550-2	643077-2	—
3	7.62 [.300]	643075-3	1-640550-3	643077-3	—
4	10.16 [.400]	643075-4	1-640550-4	643077-4	—
5	12.7 [.500]	643075-5	1-640550-5	643077-5	—
6	15.24 [.600]	643075-6	1-640550-6	643077-6	640642-6
7	17.78 [.700]	643075-7	1-640550-7	643077-7	—
8	20.32 [.800]	643075-8	1-640550-8	643077-8	640642-8
9	22.86 [.900]	643075-9	1-640550-9	—	—
10	25.4 [1.00]	1-643075-0	1-640550-0	1-643077-0	—
11	27.94 [1.100]	1-643075-1	1-640550-1	—	—
12	30.48 [1.200]	1-643075-2	1-640550-2	—	—
13	33.02 [1.300]	1-643075-3	1-640550-3	—	—
14	35.56 [1.400]	1-643075-4	1-640550-4	—	—
15	38.1 [1.500]	1-643075-5	1-640550-5	—	—
16	40.64 [1.600]	1-643075-6	1-640550-6	—	—
17	43.18 [1.700]	1-643075-7	—	—	—
18	45.72 [1.800]	1-643075-8	—	—	—
20	50.08 [2.000]	2-643075-0	2-640550-0	—	—
24	60.96 [2.400]	2-643075-4	—	—	—

Keying Plug with Carrier Strip
(10 plugs per strip)
Part Number 641994-1

Material

UL 94V-2 rated, type 6/6 nylon, natural color

