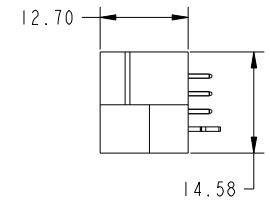
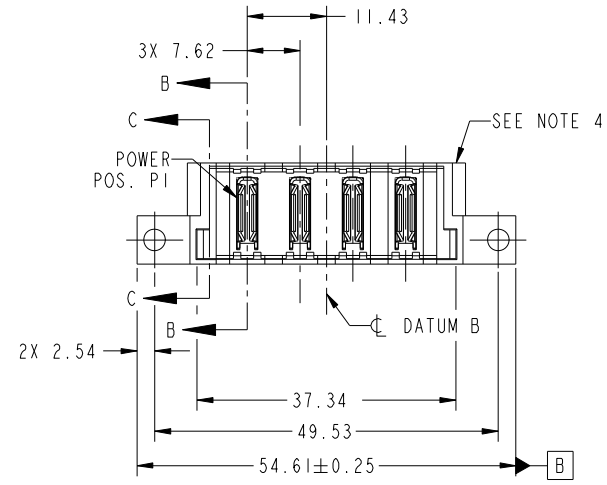
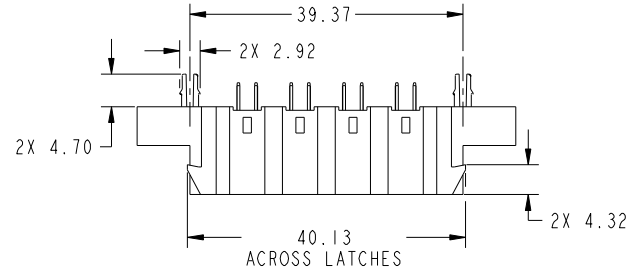


Tous droits strictement reserves. Reproduction ou communication a des tiers interdite sous quelque forme que ce soit sans autorisation écrite du propriétaire. Propriete de c FCI. Droits de reproduction FCI.



All rights strictly reserved. Reproduction or issue to third parties in any form whatever is not permitted without written authority from the proprietor. Property of FCI. Copyright FCI.

PRODUCT NO. 51963-030 NOTE ③	POWER					
	E1	P1	P2	P3	P4	E2



CODE	DIM "M" MATING LENGTH	CONTACT TYPE
PA	[N/A]	POWER
HA	[N/A]	HOLD-DOWN

mat'l code				tolerances unless otherwise specified				CUSTOMER		FCI	
ltr	ecn no.	dr	date	linear	0.X ± 0.5		COPY		www.fciconnect.com		
A	DG08-0207	JC	08/05/08		0.XX ± 0.25		projection		title		
					0.XXX ± 0.10		MIM		4ACP VERTICAL SOLDER HEADER		
				angles	0° ± 2°		scale		product family		
				dr	Jerome Chen	06/25/08	1:1		PwrBlade		
				enrg	Jerome Chen	06/25/08			code		
				chr	Gary Hsieh	06/25/08			213		
				appd	Joseph Hsia	06/25/08			1 of 4		
sheet index	revision sheet	A	A	A	A	A			sheet		
		1	2	3	4				1 of 4		

size		dwg no		code	
A		51963-030		213	
				1 of 4	

cage code 22526

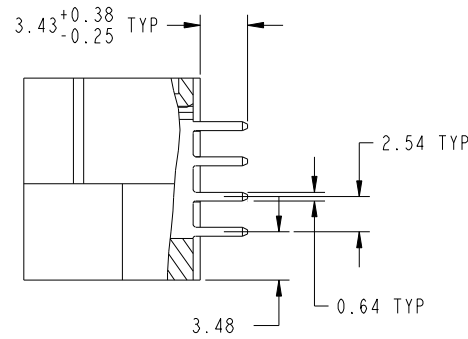
Pro/E

Tous droits strictement reserves. Reproduction ou communication a des tiers interdite sous quelque forme que ce soit sans autorisation écrite du propriétaire. Propriete de c FCI. Droits de reproduction FCI.

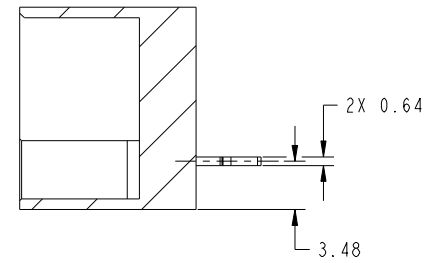


All rights strictly reserved. Reproduction or issue to third parties in any form whatever is not permitted without written authority from the proprietor. Property of FCI. Copyright FCI.

PRODUCT NUMBER  
51963-030\_\_  
NOTE 3



SECTION B-B  
SCALE 2:1



SECTION C-C  
SCALE 2:1

mat'l code				tolerances unless otherwise specified				CUSTOMER		FCI		www.fciconnect.com			
ltr	ecn no.	dr	date	linear	0.X ±0.5				COPY		title 4ACP VERTICAL SOLDER HEADER		product family PwrBlade code 213		
A					0.XX ±0.25				projection						
					0.XXX ±0.10										
				angles	0° ±2°						size		sheet		
				dr	Jerome Chen	06/25/08	scale		1:1		dwg no		2 of 4		
				enr	Jerome Chen	06/25/08	A		51963-030		sheet		2 of 4		
				chr	Gary Hsieh	06/25/08					sheet		2 of 4		
				appd	Joseph Hsia	06/25/08					sheet		2 of 4		
sheet index		revision sheet													

cage code 22526

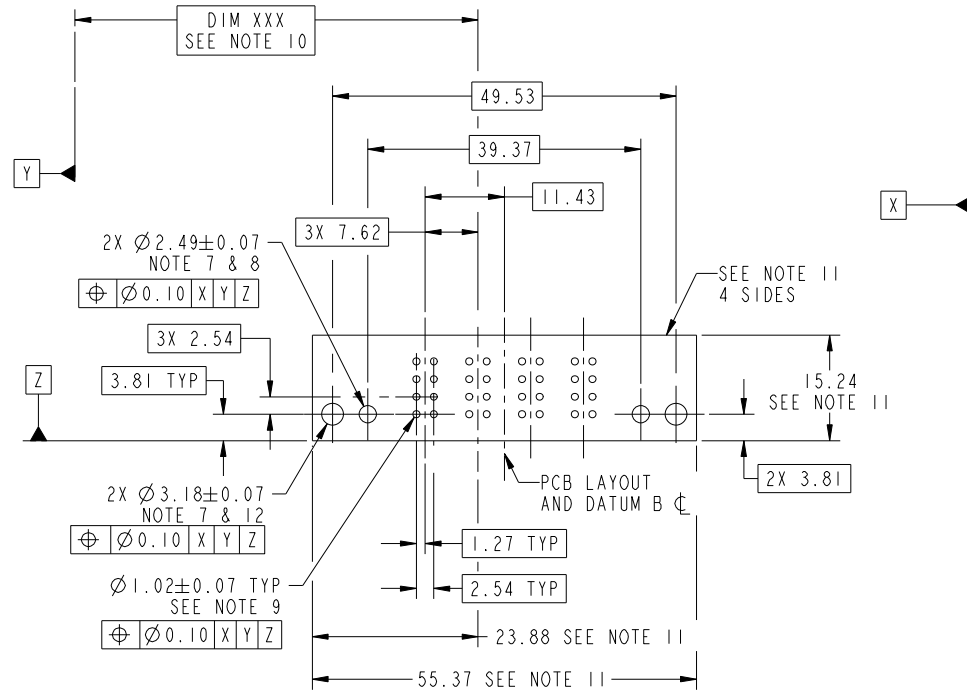
Pro/E

Tous droits strictement reserves. Reproduction ou communication a des tiers interdite sous quelque forme que ce soit sans autorisation ecrite du proprietaire. Propriete de c FCI. Droits de reproduction FCI.



All rights strictly reserved. Reproduction or issue to third parties in any form whatever is not permitted without written authority from the proprietor. Property of FCI. Copyright FCI.

PRODUCT NUMBER  
51963-030\_\_  
NOTE 3



RECOMMENDED PCB LAYOUT

mat'l code				tolerances unless otherwise specified		CUSTOMER		www.fciconnect.com	
ltr	ecn no.	dr	date	linear	0.X ± 0.5	COPY		title	
A					0.XX ± 0.25	projection		4ACP	
				angles	0.XXX ± 0.10			VERTICAL SOLDER HEADER	
					0° ± 2°			product family PwrBlade code	
		dr	Jerome Chen	06/25/08		scale		size	
		enr	Jerome Chen	06/25/08		1:1		dwg no	
		chr	Gary Hsieh	06/25/08		A		51963-030	
		appd	Joseph Hsia	06/25/08				sheet	
sheet index		revision sheet						3 of 4	

cage code 22526

Pro/E

Tous droits strictement reserves. Reproduction ou communication a des tiers interdite sous quelque forme que ce soit sans autorisation écrite du propriétaire. Propriete de c FCI. Droits de reproduction FCI.



All rights strictly reserved. Reproduction or issue to third parties in any form whatever is not permitted without written authority from the proprietor. Property of FCI. Copyright FCI.

PRODUCT NUMBER  
51963-030--  
NOTE 3

NOTES:

1. DIMENSIONS AND TOLERANCES ARE IN ACCORDANCE WITH ASME Y14.5M, 1994 UNLESS OTHERWISE SPECIFIED.

CONNECTOR NOTES:

- 2 HOUSING MATERIAL: UL 94 V-0 GLASS FILLED HIGH-TEMP THERMOPLASTIC  
POWER CONTACT MATERIAL: COPPER ALLOY  
SIGNAL PIN MATERIAL: COPPER ALLOY
  - 3. PLATING:  
51963-030 ,51963-030LF PLATING SPEC. WAS SHOWN IN THE PRINT OF 10064183.
  - 4 MANUFACTURER'S NAME, P/N, AND DATE CODE TO APPEAR ON THIS SURFACE.
  - 5. PRODUCT SPECIFICATION GS-12-149.  
APPLICATION SPECIFICATION BUS-20-067.
  - 6. PACKAGED IN TRAYS.
- PCB NOTES:
- 7. ALL HOLE DIAMETERS ARE FINISHED HOLE SIZE.
  - 8. MOUNTING HOLES, WHERE APPLICABLE, ARE UNPLATED.
  - 9  $\varnothing 1.151 \pm 0.025$  DRILLED HOLES PLATED WITH  
0.008 MIN SnPb OVER .001 [0.03]  
TO 0.08 Cu PLATING TO ACHIEVE  
 $\varnothing 1.02 \pm .07$  HOLE.
  - 10 "DIM XXX" TO BE DETERMINED BY THE CUSTOMER.
  - 11 CONNECTOR KEEP-OUT ZONE.
  - 12. CUSTOMER SUPPLIES (2) #4-40 UNC SCREW,  
HARDWARE TO MOUNT HEADER TO PC BOARD.

mat'l code				tolerances unless otherwise specified			CUSTOMER		FCI		www.fciconnect.com	
ltr	ecn no.	dr	date	linear	0.X ± 0.5		COPY		projection	title		
A					0.XX ± 0.25		MIM			4ACP VERTICAL SOLDER HEADER		
					0.XXX ± 0.10		← MIM →			product family PwrBlade code 213		
				angles	0° ± 2°		scale		A	size		sheet
				dr	Jerome Chen	06/25/08	1:1			51963-030		4 of 4
				enr	Jerome Chen	06/25/08						
				chr	Gary Hsieh	06/25/08						
				appd	Joseph Hsia	06/25/08						
sheet index	revision sheet											

cage code 22526

Pro/E

# Mouser Electronics

Authorized Distributor

Click to View Pricing, Inventory, Delivery & Lifecycle Information:

[FCI / Amphenol:](#)

[51963-030LF](#)