

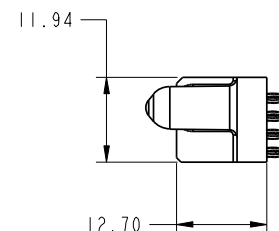
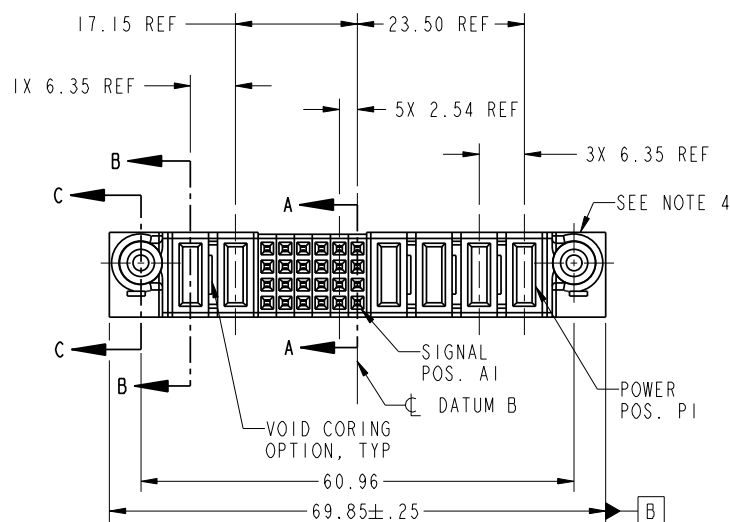


Tous droits strictement réservés. Reproduction ou communication a des tiers interdite sous quelque forme que ce soit sans autorisation écrite du propriétaire. Propriété de c FCI. Droits de reproduction FCI.



All rights strictly reserved. Reproduction or issue to third parties in any form whatever is not permitted without written authority from the proprietor. Property of FCI. Copyright FCI.

PRODUCT NO.	ROWS	POWER													
		E2	P6	P5	6	5	4	3	2	1	P4	P3	P2	P1	E1
51940-216-- NOTE: 3	D C B A		PF	PC	FF	FF	FF	FF	FF	FF	PF	PF	PC	PC	



CODE	DIM "M" MATING LENGTH	CONTACT TYPE
PC	[1.07]	POWER
PF	[2.34]	POWER
F	[N/A]	SIGNAL

mat'l code				SEE NOTES		tolerances unless otherwise specified		CUSTOMER		FCI	
litr	ecr no.	dr	date	linear		0.X ±0.3		COPY		www.fciconnect.com	
A	DG07-0066	JULIA	01/24/07			0.XX ±0.13		projection		title 4P + 24S + 2P VERTICAL PRESS-FIT RECEPT	
				angles		0.XXX ±0.051					
				dr	JULIA WANG	01/24/07		MM		product family	PwrBlade
				enr	JEROME CHEN	02/14/07		scale	1:1	size	dwg no
				chr	BEER FU	01/24/07				A	51940-216
				appd	JOSEPH HSIA	01/24/07					
sheet index	revision sheet	A	A	A	A						
		1	2	3	4						

cage code 22526

Pro/E

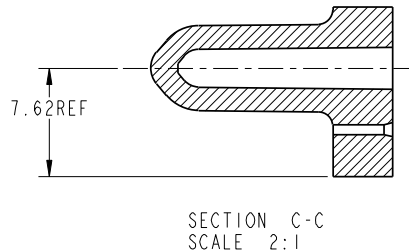
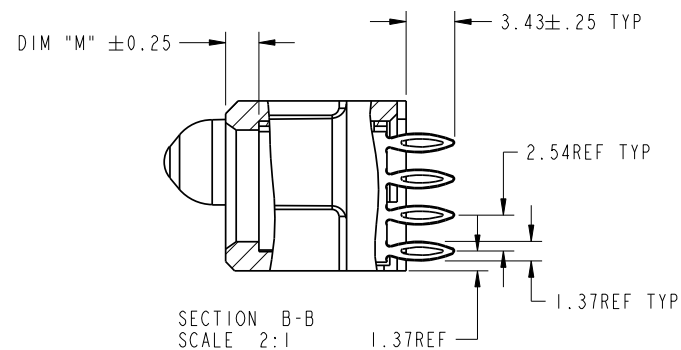
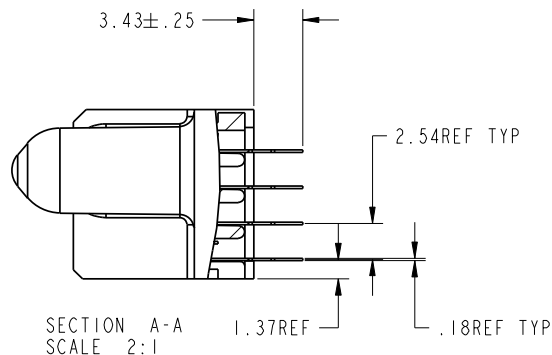
Tous droits strictement reserves. Reproduction ou communication a des tiers interdite sous quelque forme que ce soit sans autorisation écrite du propriétaire. Propriété de c FCI. Droits de reproduction FCI.


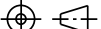



All rights strictly reserved. Reproduction or issue to third parties in any form whatever is not permitted without written authority from the proprietor. Property of FCI. Copyright FCI.

# PRODUCT NUMBER

51940-216\_\_  
NOTE: 3



mat'l code				tolerances unless otherwise specified		CUSTOMER		 www.fciconnect.com					
litr	ecr no.	dr	date	linear	0.X ±0.3		projection 	title 4P + 24S + 2P VERTICAL PRESS-FIT RECEPT					
A					0.XX ±0.13								
					angles	0.XXX ±0.051							
				0° ±2°									
				dr	JULIA WANG	01/24/07	MM 	product family		PwrBlade		code	
				enrg	JEROME CHEN	02/14/07		size	dwg no	51940-216		213	
				chr	BEER FU	01/24/07						sheet	
				appd	JOSEPH HSIA	01/24/07	scale	A		2 of 4			
							1:1						
sheet index		revision sheet											

cage code 22526

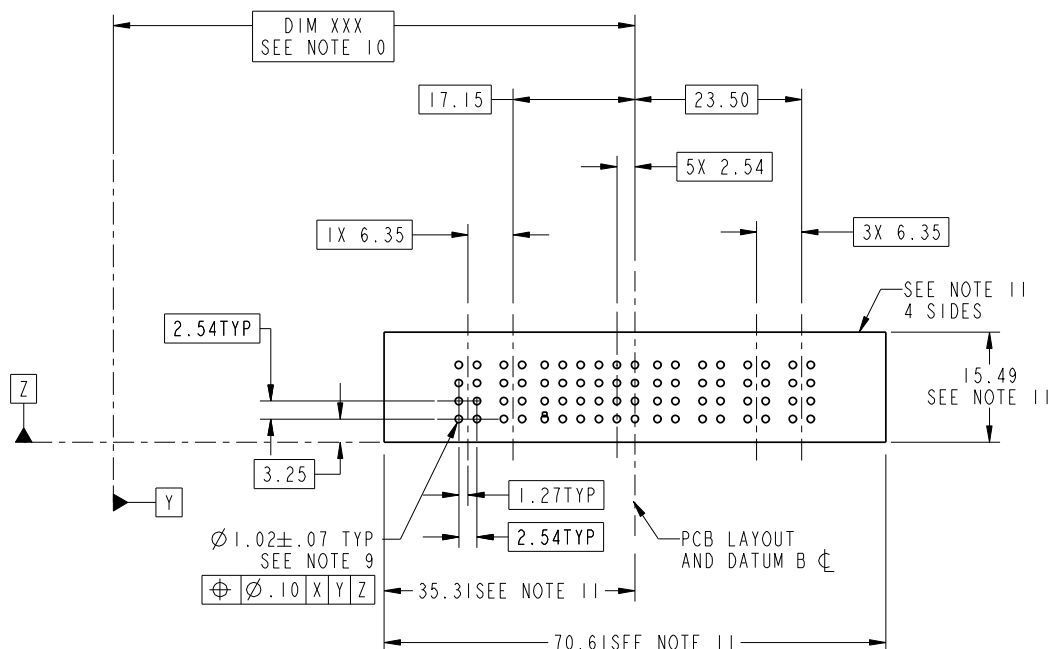
Pro/E

Tous droits strictement reserves. Reproduction ou communication a des tiers interdite sous quelque forme que ce soit sans autorisation écrite du propriétaire. Propriété de c FCI. Droits de reproduction FCI.



All rights strictly reserved. Reproduction or issue to third parties in any form whatever is not permitted without written authority from the proprietor. Property of FCI. Copyright FCI.

PRODUCT NUMBER  
51940-216--  
NOTE: 3



mat'l code				tolerances unless otherwise specified		CUSTOMER	
litr	ecn no.	dr	date	linear	0.X $\pm 0.3$	COPY	
A					0.XX $\pm 0.13$	projection	
				angles	0.XXX $\pm 0.051$		
				dr	0° $\pm 2^\circ$	MM	
				enrg	JULIA WANG 01/24/07	scale	
				chr	JEROME CHEN 02/14/07	1:1	
				appd	BEER FU 01/24/07		
					JOSEPH HSIA 01/24/07		
sheet index	revision sheet						



www.fciconnect.com

title 4P + 24S + 2P  
VERTICAL PRESS-FIT RECEPT

product family PwrBlade code 213

size dwg no 51940-216 sheet 3 of 4

cage code 22526

Pro/E

Tous droits strictement reserves. Reproduction ou communication a des tiers interdite sous quelque forme que ce soit sans autorisation écrite du propriétaire. Propriété de c FCI. Droits de reproduction FCI.



All rights strictly reserved. Reproduction or issue to third parties in any form whatever is not permitted without written authority from the proprietor. Property of FCI. Copyright FCI.

# PRODUCT NUMBER

51940-216\_\_  
NOTE: 3

## NOTES:

1. DIMENSIONS AND TOLERANCES ARE IN ACCORDANCE WITH  
ASME Y14.5M, 1994 UNLESS OTHERWISE SPECIFIED.

## CONNECTOR NOTES:

- ② HOUSING MATERIAL: UL 94 V-0 GLASS FILLED  
HIGH-TEMP THERMOPLASTIC  
POWER CONTACT MATERIAL: COPPER ALLOY  
SIGNAL PIN MATERIAL: COPPER ALLOY
3. PLATING SPEC.  
51940-216, 51940-216LF PLATING SPEC. WAS SHOWN IN THE PRINT OF 10064183.
- ④ MANUFACTURER'S NAME, P/N, AND DATE CODE TO APPEAR ON  
THIS SURFACE.
5. PRODUCT SPECIFICATION GS-12-149.  
APPLICATION SPECIFICATION BUS-20-067.
6. PACKAGED IN TRAYS.
- PCB NOTES:
7. ALL HOLE DIAMETERS ARE FINISHED HOLE SIZE.
- ⑧ MOUNTING HOLES, WHERE APPLICABLE, ARE UNPLATED.
- ⑨  $\varnothing 1.151 \pm 0.025$  DRILLED HOLES PLATED WITH  
0.008 MIN SnPb OR Sn OVER 0.03  
TO 0.08 Cu PLATING TO ACHIEVE  
 $\varnothing 1.02 \pm 0.07$  HOLE.
- ⑩ "DIM XXX" TO BE DETERMINED BY THE CUSTOMER.
- ⑪ CONNECTOR KEEP-OUT ZONE.

mat'l code				tolerances unless otherwise specified			CUSTOMER	
ltr	ecn no.	dr	date	linear	angles	dr	projection	title
A				$0.X \pm 0.3$	$0.XX \pm 0.13$			4P + 24S + 2P VERTICAL PRESS-FIT RECEPT
				$0.XXX \pm 0.051$	$0^\circ \pm 2^\circ$			product family PwrBlade
				JULIA WANG 01/24/07	JEROME CHEN 02/14/07		scale 1:1	size A
				BEER FU 01/24/07	JOSEPH HSIA 01/24/07			dwg no 51940-216
sheet index	revision sheet							code 213
								sheet 4 of 4

Pro/E

cage code 22526

# Mouser Electronics

Authorized Distributor

Click to View Pricing, Inventory, Delivery & Lifecycle Information:

FCI:

[51940-216LF](#)