

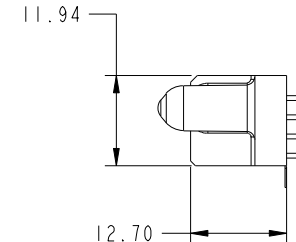
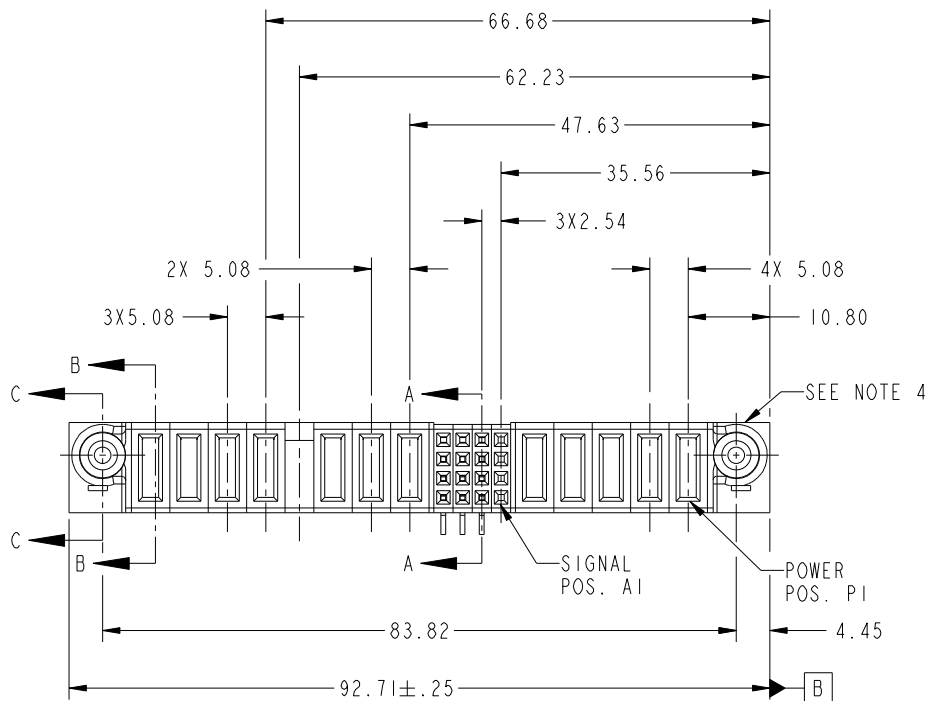




PRODUCT NO.	ROW S	POWER								SIGNAL	POWER								
		E2	P12	P11	P10	P9	P8	P7	P6	4	3	2	1	P5	P4	P3	P2	P1	E1
51940-151-- NOTE: 3	D C B A		PA	PA	PA	PA	PA	PA	PA	E	E	E	X	PD	PD	PD	PD	PD	



CODE	DIM "M" MATING LENGTH	CONTACT TYPE
PA	[1.07]	POWER
PD	[2.34]	POWER
E	[N/A]	SIGNAL
X	OMITTED	OMITTED

mat'l code				SEE NOTE		tolerances unless otherwise specified		CUSTOMER		FCI	
litr	ecn no.	dr	date	linear		0.X ±0.5		COPY		www.fciconnect.com	
A	DG05-0176	GuoJM	06/20/05			0.XX ±0.25		projection		title	
B	DG07-0498	JW	09/15/08			0.XXX ±0.10				5P + 16S + 7P VERTICAL STB RECEPT	
				angles		0° ±2°				product family	
				dr	JM Guo	06/20/05		PwrBlade		code	
				enrg	SLUO	06/20/05		size		213	
				chr	VICTOR LIN	06/20/05		dwg no		sheet	
				appd	JOSEPH HSIA	06/20/05		A		1 of 4	
sheet index	revision sheet	B 1	B 2	B 3	B 4			scale			
								1:1			

B

B

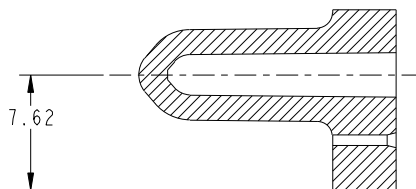
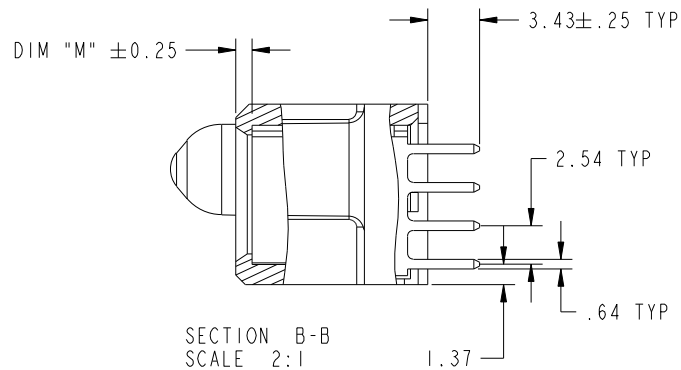
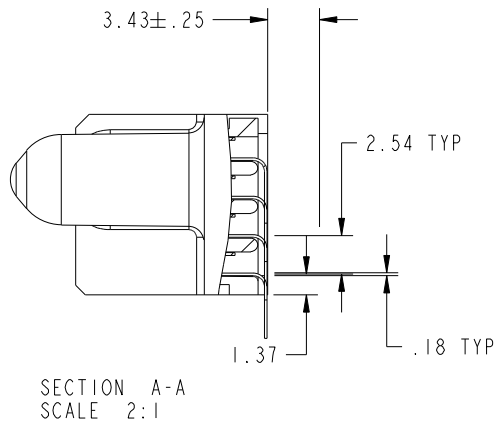
Tous droits strictement reserves. Reproduction ou communication a des tiers interdite sous quelque forme que ce soit sans autorisation ecrite du proprietaire. Propriete de c FCI. Droits de reproduction FCI.

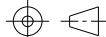


All rights strictly reserved. Reproduction or issue to third parties in any form whatever is not permitted without written authority from the proprietor. Property of FCI. Copyright FCI.

PRODUCT NUMBER

51940-151--
NOTE: 3



mat'l code				SEE NOTE				tolerances unless otherwise specified				CUSTOMER				<div>FCI</div> <div>www.fciconnect.com</div>			
lir	ecn no.	dr	date	linear	0.X ± 0.5				COPY				<div>projection</div> <div></div>						
B					0.XX ± 0.25														
					0.XXX ± 0.10														
				angles	0° ± 2°				<div>MM</div> <div>scale 1:1</div>				title						
				dr	JM Guo	06/20/05		product family					PwrBlade		code				
				enrg	SLUO	06/20/05		size					dwg no		213				
				chr	VICTOR LIN	06/20/05		A		51940-151		sheet 2							
				appd	JOSEPH HSIA	06/20/05													
sheet index		revision sheet																	

A

A

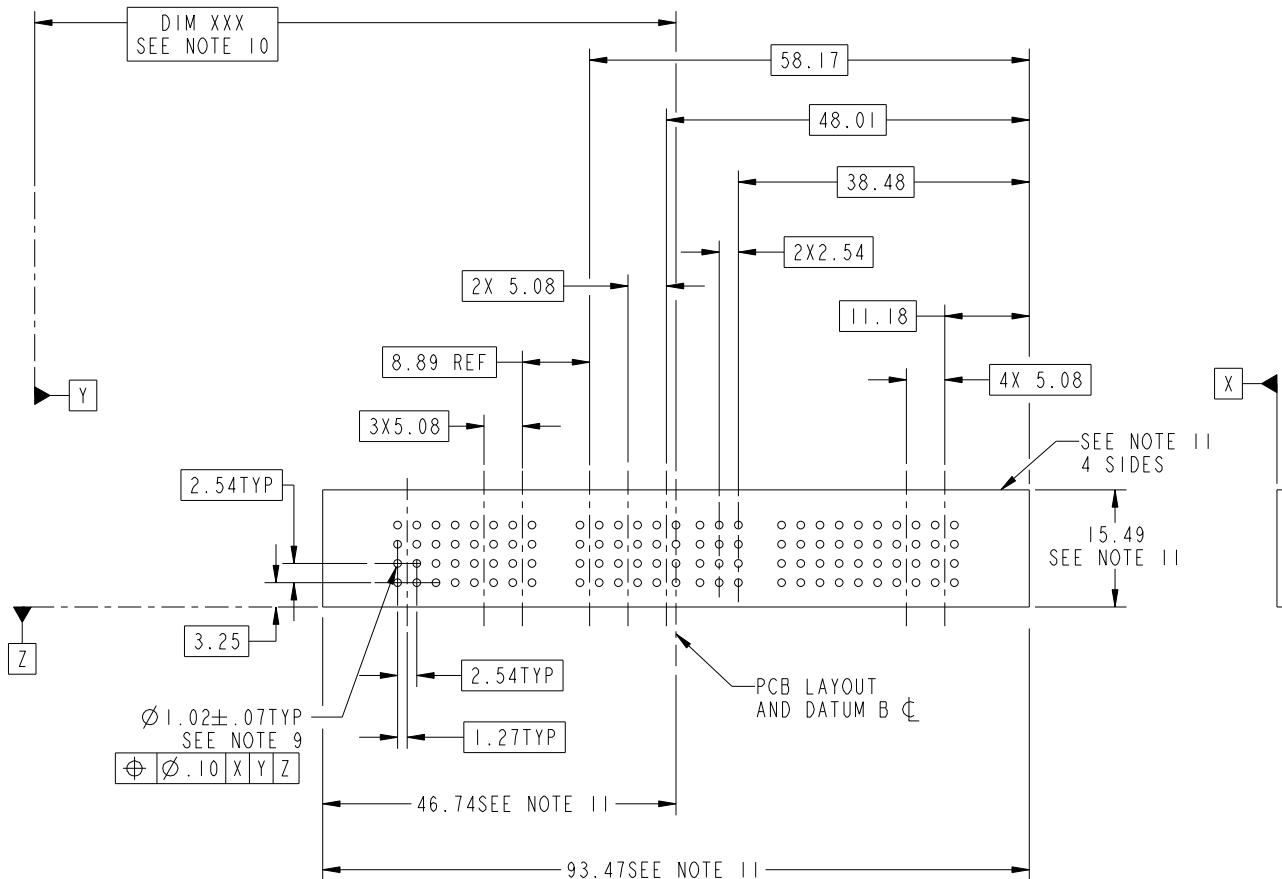
B


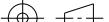

B



PRODUCT NUMBER

51940-151--
NOTE: 3



mat'l code				SEE NOTE				tolerances unless otherwise specified				CUSTOMER				<div>www.fciconnect.com</div>				
lir	ecn no.	dr	date	linear	0.X ±0.5				COPY				<div></div>							
B					0.XX ±0.25				projection											
					angles	0.XXX ±0.10				<div></div>										
				0° ±2°																
				dr	JM Guo	06/20/05			MM				product family				PwrBlade		code	
				enrg	SLUO	06/20/05							size				dwg no		213	
				chr	VICTOR LIN	06/20/05			scale				A				51940-151		sheet 3	
				appd	JOSEPH HSIA	06/20/05														
sheet index		revision sheet																		

cage code 22506

Pro/E

PDM: Rev:B

STATUS: Released

Printed: Dec 20, 2010



1 | 2

3

4

PRODUCT NUMBER

51940-151--
NOTE: 3

NOTES:

1. DIMENSIONS AND TOLERANCES ARE IN ACCORDANCE WITH
ASME Y14.5M, 1994 UNLESS OTHERWISE SPECIFIED.

CONNECTOR NOTES:

- ② HOUSING MATERIAL: UL 94 V-0 GLASS FILLED
HIGH-TEMP THERMOPLASTIC
POWER CONTACT MATERIAL: COPPER ALLOY
SIGNAL PIN MATERIAL: COPPER ALLOY

△ 3. PLATING:
SEE ITEM 5 & 6 IN PRINT 10064183 FOR PLATING SPEC OF 51940-151; 51940-151LF RESPECTIVELY.

④ MANUFACTURER'S NAME, P/N, AND DATE CODE TO APPEAR ON
THIS SURFACE.

5. PRODUCT SPECIFICATION GS-12-149.
APPLICATION SPECIFICATION BUS-20-067.

6. PACKAGED IN TRAYS.

PCB NOTES:

7. ALL HOLE DIAMETERS ARE FINISHED HOLE SIZE.

⑧ MOUNTING HOLES, WHERE APPLICABLE, ARE UNPLATED.

⑨ $\varnothing 1.151 \pm 0.025$ DRILLED HOLES PLATED WITH
0.008 MIN SnPb OR Sn OVER 0.03
TO 0.08 Cu PLATING TO ACHIEVE
 $\varnothing 1.02 \pm .07$ HOLE.

⑩ "DIM XXX" TO BE DETERMINED BY THE CUSTOMER.

⑪ CONNECTOR KEEP-OUT ZONE.

12 A/B SYMBOL WILL BE NEXT TO ANY DIMENSION,
VIEW, OR NOTE WHICH HAS BEEN MODIFIED
WITH THE CURRENT DRAWING REVISION.

mat'l code				SEE NOTE		tolerances unless otherwise specified		CUSTOMER		FCI			
lfr	ecn no.	dr	date					COPY		www.fciconnect.com			
B				linear		$0.X \pm 0.5$		projection		title 5P + 16S + 7P VERTICAL STB RECEPT			
						$0.XX \pm 0.25$							
				angles		$0.XXX \pm 0.10$							
						$0^\circ \pm 2^\circ$				product family PwrBlade			
				dr	JM Guo	06/20/05		scale		size	dwg no	213	code
				enrg	SLUO	06/20/05				A	51940-151	sheet	
				chr	VICTOR LIN	06/20/05						4	
				appd	JOSEPH HSIA	06/20/05							
sheet	revision												
index	sheet												

1 | 2

Pro/E

PDM: Rev:B

STATUS: Released

Printed: Dec 20, 2010

Mouser Electronics

Authorized Distributor

Click to View Pricing, Inventory, Delivery & Lifecycle Information:

FCI:

[51940-151LF](#)