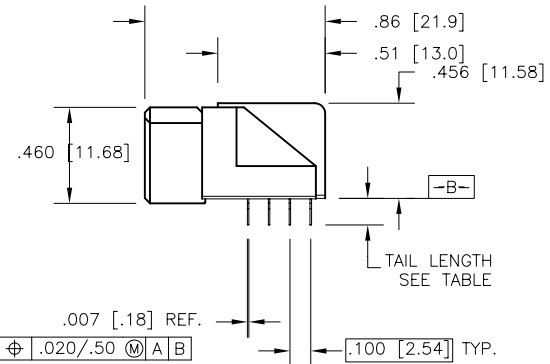
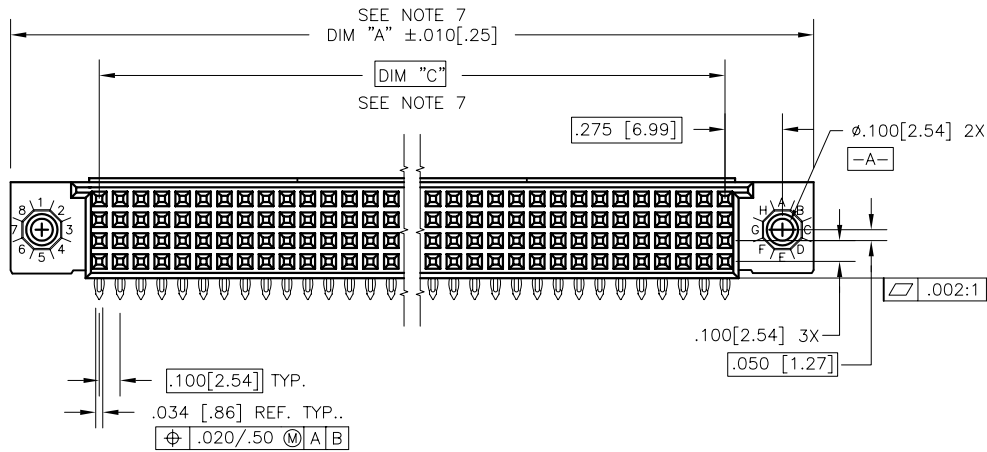
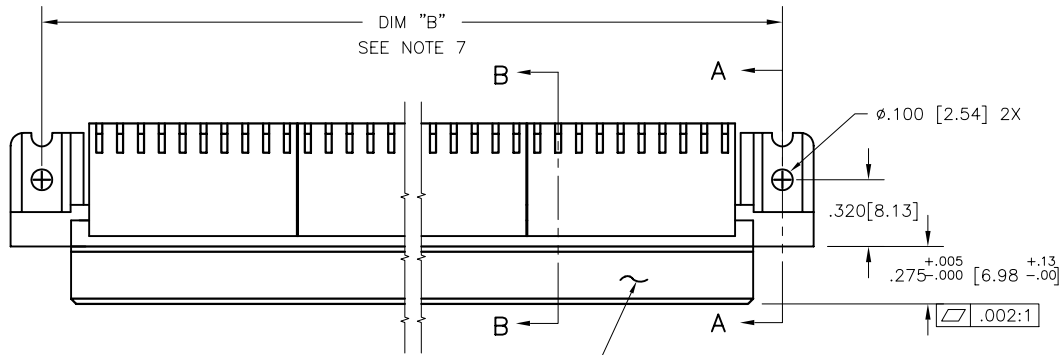




FCIconnect.com

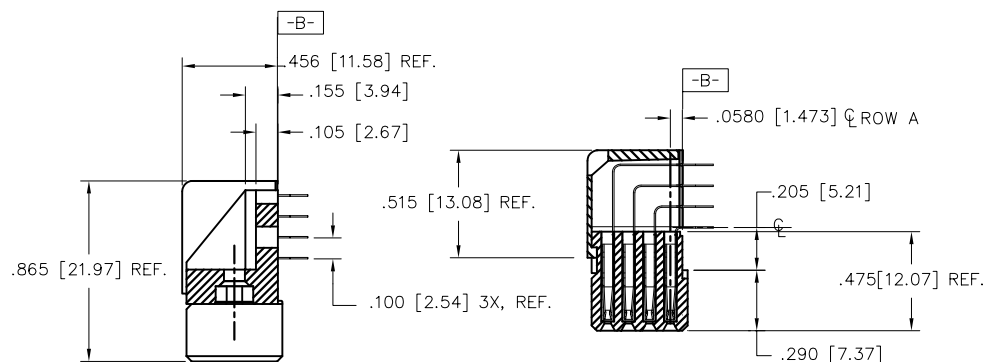
Copyright FCI

PRODUCT NUMBER
SEE TABLE



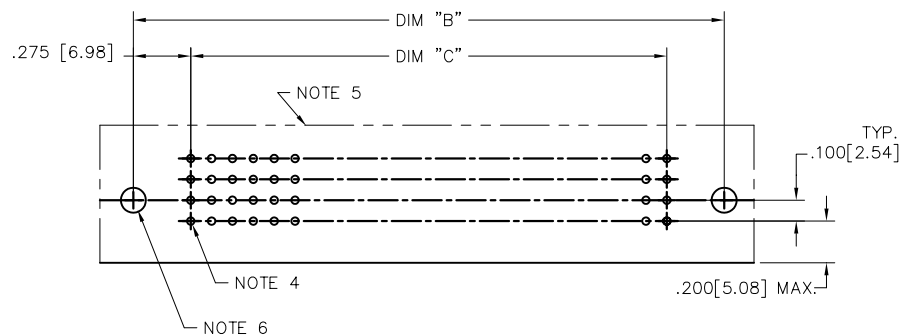
mat'l. code				surface		tolerance		projection		product family	
NOTE 3				ISO 1302		ISO 406		ISO 1101		HPC	
ltr	ecm no	dr	date	tolerances unless otherwise specified						title	
P	V10824	JRW	2/6/01			XX±.01/XX±0.3		INCH/MM		4 ROW R/A RECEPTACLE	
R	V05-0460	DAI	7/13/05	angles		.XXX±.005/XX±0.13				PRESS FIT	
S	V05-1003	DAI	11/1/05	0°±2°		.XXX±.0020/XXX±0.05		scale 1:1		dwg no	
T	V05-1041	HTB	11/14/05	dr		D.INGRAM		7/13/05		sheet 1 of 7	
U	M06-0255	MHT	7/06/06	engr		D.HORCHLER		7/13/05		50642	
V	M06-0388	MHT	10/04/06	chr		T.BREWBAKER		7/13/05		A3	
W	M08-0149	MHT	5/27/08	appd		D.HORCHLER		7/13/05		type	
sheet	revision	W	W	W	W	W	W	W	W	Product Customer Drawing	
index	sheet	1	2	3	4	5	6	7			

PRODUCT NUMBER
SEE TABLE



SECTION A-A

SECTION B-B

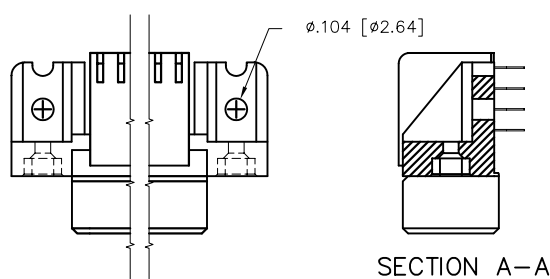


RECOMMENDED PCB LAYOUT

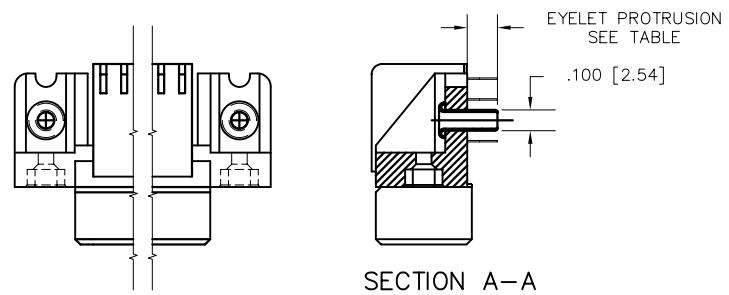
(ALL HOLES LOCATED ON .100[2.54]
GRID UNLESS OTHERWISE SHOWN)

mat'l. code NOTE 3				surface ISO 1302	tolerance ISO 406 ISO 1101	projection INCH/MM	product family HPC
ltr	ecm no	dr	date	tolerances unless otherwise specified		scale 1:1	title 4 ROW R/A RECEPTACLE PRESS FIT
W				angles	linear		dwg no 50642 sheet 2 of 7 size A3
				0° ± 2°	linear		
				dr	D.INGRAM	7/13/05	type Product Customer Drawing
				enr	D.HORCHLER	7/13/05	
				chr	T.BREWBAKER	7/13/05	
				appd	D.HORCHLER	7/13/05	
sheet index	revision sheet						

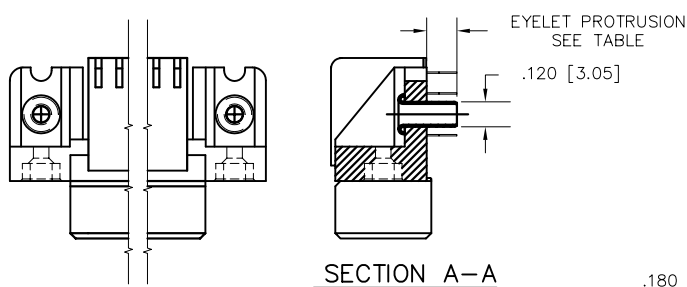
PRODUCT NUMBER
SEE TABLE



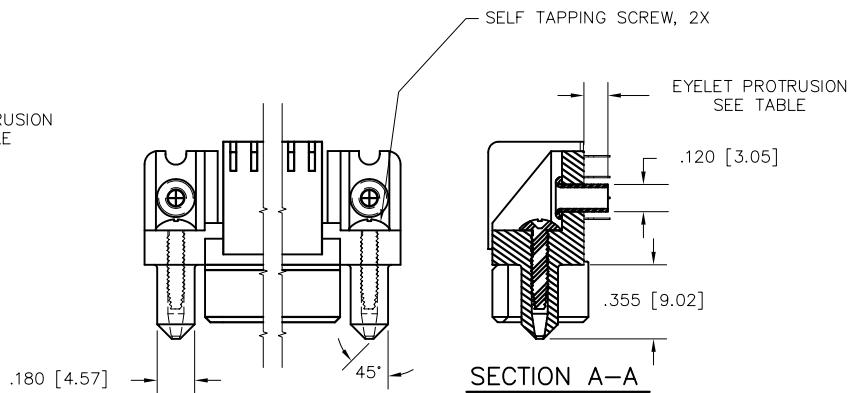
SPECIAL FEATURE OPTION A
SEE NOTE 6



SPECIAL FEATURE OPTION B
SEE NOTE 6



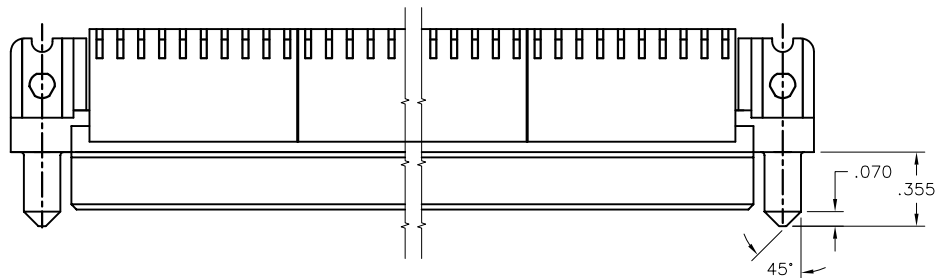
SPECIAL FEATURE OPTION C
SEE NOTE 6



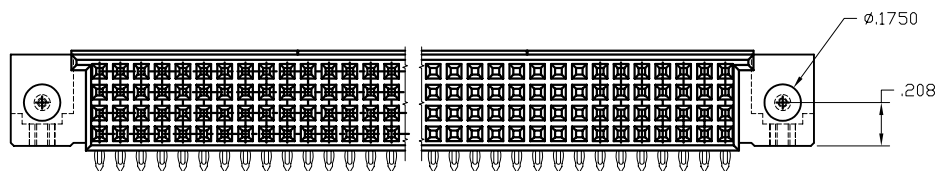
SPECIAL FEATURE OPTION D
SEE NOTE 6

mat'l. code NOTE 3				surface ISO 1302	tolerance ISO 406 ISO 1101	projection INCH/MM	product family HPC
ltr	ecm no	dr	date	tolerances unless otherwise specified			title
W				angles	linear	scale 1:1	4 ROW R/A RECEPTACLE PRESS FIT
				0°±2°	XXX±.01/XX±.03		
					XXX±.005/XX±.013		
					XXXX±.0020/XXX±.005		
				dr	D.INGRAM	7/13/05	dwg no
				enr	D.HORCHLER	7/13/05	sheet 3 of 7
				chr	T.BREWBAKER	7/13/05	size
				appd	D.HORCHLER	7/13/05	A3
sheet	revision						type
index	sheet						Product Customer Drawing

PRODUCT NUMBER
SEE TABLE



SPECIAL FEATURE OPTION E
SEE NOTE 6



mat'l. code NOTE 3				surface ISO 1302	tolerance ISO 406 ISO 1101	projection INCH/MM	product family HPC
ltr	ecn no	dr	date	tolerances unless otherwise specified		scale 1:1	title 4 ROW R/A RECEPTACLE PRESS FIT
W				angles	linear		dwg no 50642 sheet 4 of 7 size A3
				0° ± 2°	linear		
				dr	D. INGRAM	7/13/05	type Product Customer Drawing
				enr	D. HORCHLER	7/13/05	
				chr	T. BREWBAKER	7/13/05	
				appd	D. HORCHLER	7/13/05	
sheet index	revision sheet						

PRODUCT NUMBER
50642-XX004
50642-XX004LF

SELECT LOAD (50642-XX004 AND 50642-XX004LF ONLY)

60	55	50	45	40	35	31
A	A	A	A	A	A	A
B	B	B	B	B	B	B
C	C	C	C	C	C	C

*

30	25	20	15	10	5	1
A	A	A	A			
B	B					

D
C
B
A

TERM.
1

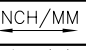

SPECIAL NOTES FOR -XX004 AND -XX004LF ONLY:

- ALL POSITIONS ARE LOADED, EXCEPT OMTS AS SHOWN.
- COLUMN 1, ROW A IS DESIGNATED AS SIGNAL TERM. 1, AS VIEWED FROM THE MATING FACE.
- BECAUSE OF THE SELECT LOAD TERMINAL POSITIONS, ONLY 2 PRESS BLOCKS NEED TO BE INSTALLED-ONE PLACED STARTING IN COL. 25(*) AND ENDING IN COL. 34 THE OTHER PLACED STARTING IN COL. 35(*) AND ENDING IN COL.44.
- SIGNAL DATA FOR 50642-XX004 AND -XX004LF:
SIZE 4 x 60
TOTAL NO. OF POSITIONS - 240
NO. OF POSITIONS LOADED - 032

ITEM KEY	QTY.
A	16
B	8
C	8
BLANK	208

mat'l. code	NOTE 3	surface	ISO 1302	tolerance	ISO 406 ISO 1101	projection	product family	HPC
ltr	ecm no	dr	date	tolerances unless otherwise specified			title	4 ROW R/A RECEPTACLE PRESS FIT
W				angles	linear	INCH/MM	dwg no	sheet 5 of 7 size
				0° ± 2°	XXX ± 0.01/XX ± 0.3	scale 1:1	50642	A3
					XXX ± 0.05/XX ± 0.13			
					XXXX ± 0.020/XXX ± 0.05			
				dr	D.INGRAM	7/13/05		
				enr	D.HORCHLER	7/13/05		
				chr	T.BREWBAKER	7/13/05		
				appd	D.HORCHLER	7/13/05		
sheet	revision						type	Product Customer Drawing
index	sheet							

PRODUCT NUMBER	NUMBER OF POSITIONS NOTE 2	TAIL LENGTH	SPECIAL FEATURES SEE NOTE 6	SOLDER TAIL PLATING	CONTACT PLATING	EYELET PROTRUSION	GUIDE PINS
50642-1YYYE	YYY	.125±.010/3.18±.25	—	TIN LEAD	30u"/.76u Au	N/A	NONE
50642-1YYYELF	YYY	.125±.010/3.18±.25	—	TIN	30u"/.76u GXT	N/A	NONE
50642-1YYYEA	YYY	.125±.010/3.18±.25	"A"	TIN LEAD	30u"/.76u Au	N/A	NONE
50642-1YYYEALF	YYY	.125±.010/3.18±.25	"A"	TIN	30u"/.76u GXT	N/A	NONE
50642-1YYYEB	YYY	.125±.010/3.18±.25	"B"	TIN LEAD	30u"/.76u Au	.145/3.68	NONE
50642-1YYYEBLF	YYY	.125±.010/3.18±.25	"B"	TIN	30u"/.76u GXT	.145/3.68	NONE
50642-1YYYEC	YYY	.125±.010/3.18±.25	"C"	TIN LEAD	30u"/.76u Au	.115/2.92	NONE
50642-1YYYECLF	YYY	.125±.010/3.18±.25	"C"	TIN	30u"/.76u GXT	.115/2.92	NONE
50642-1YYYED	YYY	.125±.010/3.18±.25	"D"	TIN LEAD	30u"/.76u Au	.115/2.92	2
50642-1YYYEDLF	YYY	.125±.010/3.18±.25	"D"	TIN	30u"/.76u GXT	.115/2.92	2
50642-1YYYEE	YYY	.125±.010/3.18±.25	"E"	TIN LEAD	30u"/.76u Au	N/A	2
50642-1YYYEELF	YYY	.125±.010/3.18±.25	"E"	TIN	30u"/.76u GXT	N/A	2
50642-1YYYF	YYY	.145±.010/3.68±.25	—	TIN LEAD	30u"/.76u Au	N/A	NONE
50642-1YYYFLF	YYY	.145±.010/3.68±.25	—	TIN	30u"/.76u GXT	N/A	NONE
50642-1YYYFA	YYY	.145±.010/3.68±.25	"A"	TIN LEAD	30u"/.76u Au	N/A	NONE
50642-1YYYFALF	YYY	.145±.010/3.68±.25	"A"	TIN	30u"/.76u GXT	N/A	NONE
50642-1YYYFC	YYY	.145±.010/3.68±.25	"C"	TIN LEAD	30u"/.76u Au	.145/3.68	NONE
50642-1YYYFCLF	YYY	.145±.010/3.68±.25	"C"	TIN	30u"/.76u GXT	.145/3.68	NONE
50642-1YYYFD	YYY	.145±.010/3.68±.25	"D"	TIN LEAD	30u"/.76u Au	.145/3.68	2
50642-1YYYFDLF	YYY	.145±.010/3.68±.25	"D"	TIN	30u"/.76u GXT	.145/3.68	2
50642-1YYYFE	YYY	.145±.010/3.68±.25	"E"	TIN LEAD	30u"/.76u Au	N/A	2
50642-1YYYFELF	YYY	.145±.010/3.68±.25	"E"	TIN	30u"/.76u GXT	N/A	2
50642-XX004	240	.125±.010/3.18±.25	SEE SHEET 5	TIN LEAD	30u"/.76u Au	N/A	NONE
50642-XX004LF	240	.125±.010/3.18±.25	SEE SHEET 5	TIN	30u"/.76u GXT	N/A	NONE

mat'l. code NOTE 3				surface ISO 1302 <input checked="" type="checkbox"/>		tolerance ISO 406 ISO 1101		projection 		product family HPC	
ltr	ecm no	dr	date	tolerances unless otherwise specified							
W				angles	linear	XX±.01/XX±.03		INCH/MM		title 4 ROW R/A RECEPTACLE PRESS FIT	
				0°±2°		XXX±.005/XX±.013		scale 1:1		dwg no 50642	
				dr	D.INGRAM	7/13/05				sheet 6 of 7 size A3	
				enr	D.HORCHLER	7/13/05				type Product Customer Drawing	
				chr	T.BREWBAKER	7/13/05					
				appd	D.HORCHLER	7/13/05					
sheet index	revision										
	sheet										

PRODUCT NUMBER
SEE TABLE

NOTES:

①. PRODUCT NUMBERING CODE

50642- X YYY Z S LF
LEAD FREE (OPTIONAL)
SPECIAL FEATURES SEE TABLE
TAIL LENGTH SEE TABLE
NO. OF POSITIONS SEE NOTE 2
PLATING SEE TABLE
BASE NUMBER

PRODUCT NUMBERING CODE FOR SELECT LOAD

50642- XX YYY LF
LEAD FREE (OPTIONAL)
SEQUENCE NUMBER
ALWAYS "XX"
BASE NUMBER

- ②. THIS PRODUCT IS CONFIGURED IN SIZES OF 6 THRU 80 COLUMNS IN INCREMENTS OF ONE, i.e. 6, 7, 8, 9,79, 80.
- ③. MATERIAL: PRESS BLOCK – HIGH TEMP THERMOPLASTIC;
HOUSING—GLASS AND MINERAL FILLED HIGH TEMP TURE THERMOPLASTIC, FLAME RETARDANT PER UL94V-0. COLOR—BLACK
CONTACT—BeCu
- ④. DRILLED HOLE DIA OF .0453±.001 INCH FINISHED TO .0400±.0030 INCH BY PLATING SnPb OR OTHER PLATING 0.0003 TO 0.0006 INCHES THICK WITH A COPPER UNDERPLATE AS NEEDED.
- ⑤. INFORMATION DOCUMENT: FOR PCB STAY- AWAY ZONE, SEE TA-0954.
- ⑥. SPECIAL FEATURES (SEE PRODUCT NUMBER TABLE, AND DETIALS ON SHEET 3)
- IF NO SPECIAL FEATURE CODE IS SELECTED, PCB MOUNTING HOLE DIMENSION TO BE $\phi.120\pm.003[3.05\pm0.07]$
"A" PCB MOUNTING HOLE DIMENSION TO BE $\phi.100\pm.003[2.54\pm0.07]$
"B" INCLUDES PRE-INSTALLED EYELETS FOR PCB ATTACHMENT IN A $\phi.100\pm.003[2.54\pm0.07]$ MOUNTING HOLE. (E TAIL ONLY)
"C" INCLUDES PRE-INSTALLED EYELETS FOR PCB ATTACHMENT IN A $\phi.120\pm.003[3.05\pm0.07]$ MOUNTING HOLE.
"D" INCLUDES PRE-INSTALLED EYELETS WITH MOLDED GUIDE PINS FOR PCB ATTACHMENT IN A $\phi.120\pm.003[3.05\pm0.07]$ MOUNTING HOLE.
"E" INCLUDES MOLDED GUIDE PINS WITH TRI-HOLE SHAPED MOUNTING HOLES. (EYELETS NOT INSTALLED)
- ⑦. LENGTH CALCULATIONS:
DIMENSION "A" CALCULATION = $.100 [2.54] \times \text{NO. OF COLUMNS} + .75 [19.1]$
DIMENSION "B" CALCULATION = $.100 [2.54] \times \text{NO. OF COLUMNS} + .450 [11.43]$
DIMENSION "C" CALCULATION = $.100 [2.54] \times \text{NO. OF COLUMNS} - .100 [2.54]$
- ⑧. MANUFACTURE'S LOGO, PN, AND LOT CODE TO APPEAR ON THIS SURFACE.
9. THIS PRODUCT (WITH "LF" SUFFIX) MEETS EUROPEAN UNION DIRECTIVES AND OTHER COUNTRY REGULATIONS AS DESCRIBED IN GS-22-008.
10. THIS HOUSING WILL WITHSTAND EXPOSURE TO 260°C PEAK TEMP TURE FOR 10-30 SECONDS IN A CONVECTION, INFRA-RED OR VAPOR PHASE REFLOW OVEN.
11. ALL POSITIONS ARE LOADED EXCEPT FOR -XXXXY ASSEMBLIES WHICH HAVE SELECTIVE LOADING.

mat'l. code				surface		tolerance		projection		product family	
NOTE 3				ISO 1302		ISO 406 ISO 1101				HPC	
ltr	ecr no	dr	date	tolerances unless otherwise specified							
W				angles	linear	XX±.01/XX±0.3		INCH/MM		title	
						XXX±.005/XX±0.13				4 ROW R/A RECEPTACLE	
				0°±2°		XXXX±.0020/XXX±0.05		scale 1:1		PRESS FIT	
				dr	D.INGRAM	7/13/05				dwg no	
				enrg	D.HORCHLER	7/13/05				sheet 7 of 7	
				chr	T.BREWBAKER	7/13/05				size	
				appd	D.HORCHLER	7/13/05				A3	
sheet		revision									
index		sheet									

Mouser Electronics

Authorized Distributor

Click to View Pricing, Inventory, Delivery & Lifecycle Information:

FCI:

[50642-1100EB](#) [50642-1284EB](#) [50642-1320EB](#)