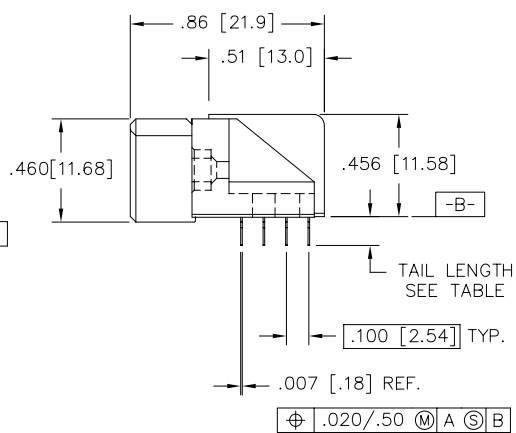
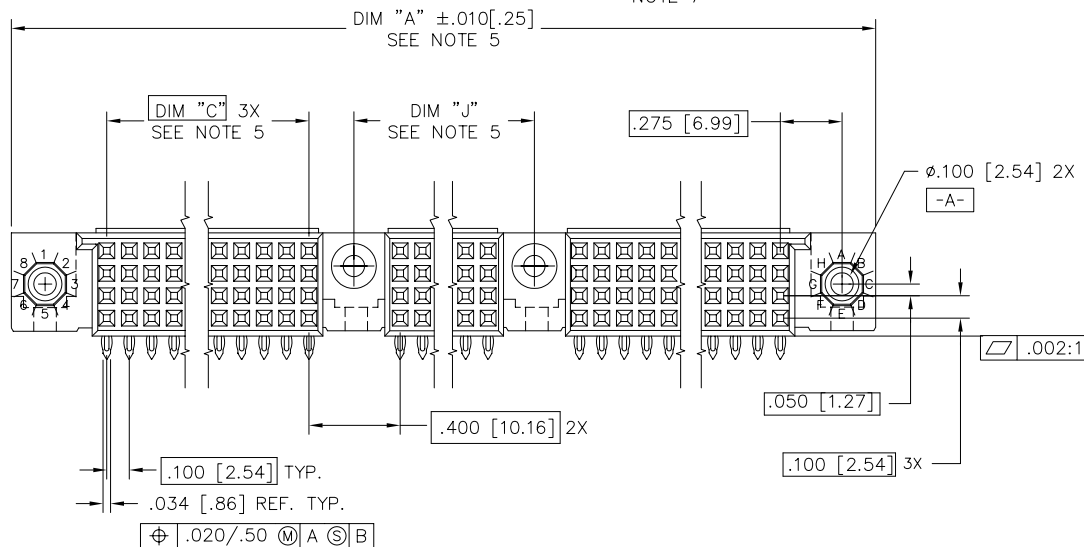
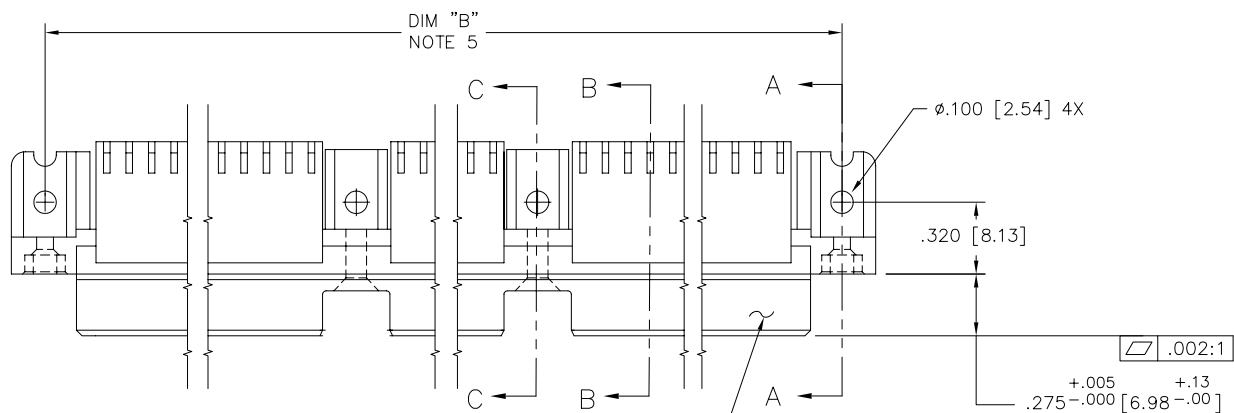




FCIconnect.com

Copyright FCI

PRODUCT NUMBER
SEE TABLE



mat'l. code SEE NOTE 3				surface ISO 1302 ✓		tolerance ISO 406 ISO 1101	projection INCH/MM	product family HPC		
ltr	ecm	no	dr	date	tolerances unless otherwise specified			title		
N	V10820	JRW	2/1/01		angles	linear	.XX±.01/.3	4 ROW R/A RECEPTACLE		
P	V10947	CGD	2/28/01				.XXX±.005/.13	PRESS FIT, 2 GUIDE PINS		
R	V10960	MEM	3/14/01		0°±2'		.XXXX±.0020/.051	scale 1:1		
S	V05-0512	DAI	8/01/05	dr	G.PETERS		6/12/93	dwg no		
T	V05-1054	HTB	11/16/05	enr	S.CLARK		6/12/93	sheet 1 of 6		
U	M06-0283	MHT	7/27/06	chr	S.CLARK		6/12/93	50644		
V	M07-0099	AGS	2/08/07	appd	S.CLARK		6/12/93	A3		
sheet	revision	V	V	V	V	V	V	type		
index	sheet	1	2	3	4	5	6	Product Customer Drawing		

form: A3

PRODUCT NUMBER
SEE TABLE

NOTES:

- ① PRODUCT NUMBERING CODE:
50644 - X YYY Z S LF
LEAD FREE (OPTIONAL)
SPECIAL FEATURES (NOTE 10)
TAIL LENGTH (SEE TABLE)
NO. OF POSITIONS (NOTE 2)
PLATING SEE TABLE
BASE NUMBER

PRODUCT NUMBERING CODE FOR SELECT LOAD

- 50644- XX YYY LF
LEAD FREE (OPTIONAL)
SEQUENCE NUMBER
ALWAYS "XX"
BASE NUMBER

- ② THIS PRODUCT IS CONFIGURED IN SIZES OF 30 thru 150 COLUMNS IN INCREMENTS OF THREE.
i.e.: 30,33,36,.....147,150.

- ③ MATERIAL PRESS BLOCK: HIGH TEMP. THERMOPLASTIC
MATERIAL HOUSING: GLASS AND MINERAL FILLED
HIGH TEMP. THERMOPLASTIC. FLAME RETARDANT
PER UL94V-0. COLOR: BLACK.
CONTACT MATERIAL: BeCu.

4. PLATING:
CONTACT AREA - SEE PRODUCT NUMBER TABLE
TAILS-EITHER TIN OR TIN LEAD, SEE PRODUCT NUMBER TABLE

- ⑤ DIMENSION "A" CALCULATION = $.100 (2.54) \times \text{NO. OF COLUMNS} + 1.35 [34.3]$
DIMENSION "B" CALCULATION = $.100 (2.54) \times \text{NO. OF COLUMNS} + 1.050 [26.67]$
DIMENSION "C" CALCULATION = $.100 (2.54) \times \text{NO. OF COLUMNS} - \text{DIVDED BY } 3 - .100 [2.54]$
DIMENSION "J" CALCULATION = $.100 (2.54) \times \text{NO. OF COLUMNS} - \text{DIVDED BY } 3 + .300 [7.62]$

- ⑥ DRILLED HOLE DIA. OF $.0453 \pm .001$ FINISHED TO $.0400 \pm .0030$
BY PLATING SnPb(60/40), $.0003 - .0006$ w/Cu
UNDERPLATING AS NEEDED.

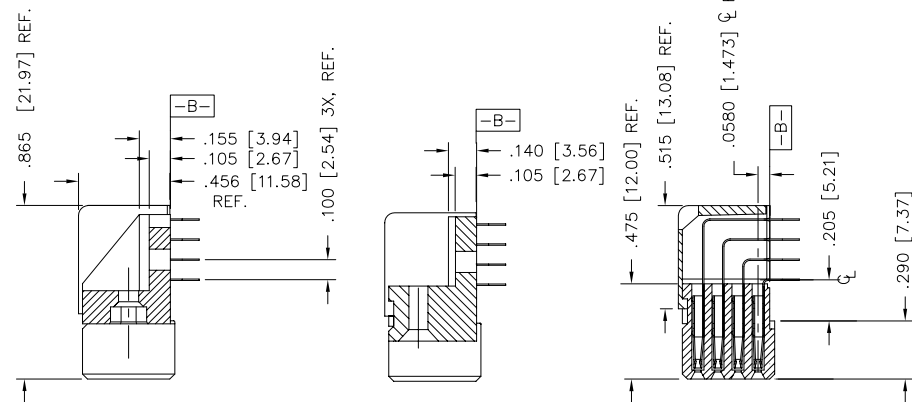
- ⑦ MANUFACTURE'S LOGO, P/N, AND LOT CODE TO APPEAR ON THIS SURFACE.

8. THIS HOUSING WILL WITHSTAND EXPOSURE TO 260°C PEAK TEMPERATURE FOR 10-30 SECONDS IN A CONVECTION, INFRA-RED OR VAPOR PHASE REFLOW OVEN.

- ⑨ FOR PCB STAY AWAY ZONE SEE TA-0954.

- ⑩ SPECIAL FEATURES:
- = IF NO SPECIAL FEATURE CODE IS SELECTED, CONNECTOR WILL APPEAR AS SHOWN. PCB MOUNTING HOLE DIMENSION TO BE $\phi .120 \pm .003 [3.05 \pm 0.07]$
"A" = IF SPECIFIED, CONNECTOR WILL APPEAR AS SHOWN ON SHEET 3. PCB MOUNTING HOLE DIMENSION TO BE $\phi .100 \pm .003 [2.54 \pm 0.07]$.
"B" = IF SPECIFIED, CONNECTOR WILL HAVE PRE-INSTALLED EYELET FOR P.C.B. ATTACHMENT IN A $\phi .100 \pm .003 [2.54 \pm 0.07]$ MOUNTING HOLE. SEE SHEET 3. (AVAILABLE IN "E" TAIL LENGTH. ONLY).
"C" = IF SPECIFIED, CONNECTOR WILL HAVE PRE-INSTALLED EYELET FOR P.C.B. ATTACHMENT IN A $\phi .120 \pm .003 [2.54 \pm 0.07]$ MOUNTING HOLE. SEE SHEET 3.
"D" = IF SPECIFIED, CONNECTOR WILL HAVE PRE-INSTALLED EYELET WITH MOLDED GUIDE PINS FOR P.C.B. ATTACHMENT IN A $\phi .120 \pm .003 [2.54 \pm 0.07]$ MOUNTING HOLE. SEE SHEET 3.

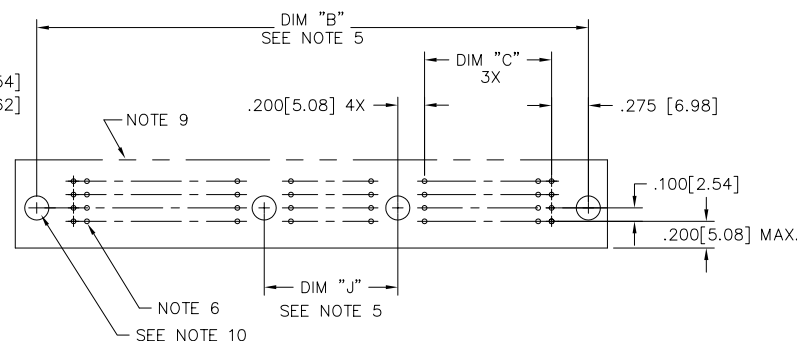
- ⑪ THIS PRODUCT (WITH "LF" SUFFIX) MEETS EUROPEAN UNION DIRECTIVES AND OTHER COUNTRY REGULATIONS AS DESCRIBED IN GS-22-008.



SECTION A-A

SECTION C-C

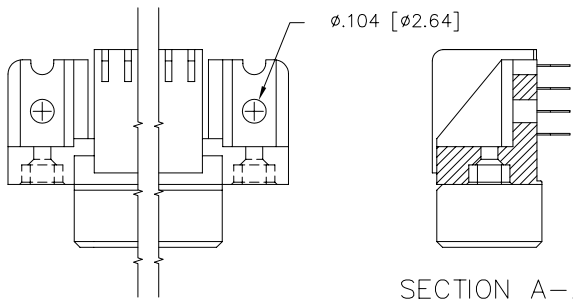
SECTION B-B



RECOMMENDED PCB LAYOUT
(ALL HOLES LOCATED ON $.100 [2.54]$ GRID UNLESS OTHERWISE SHOWN)

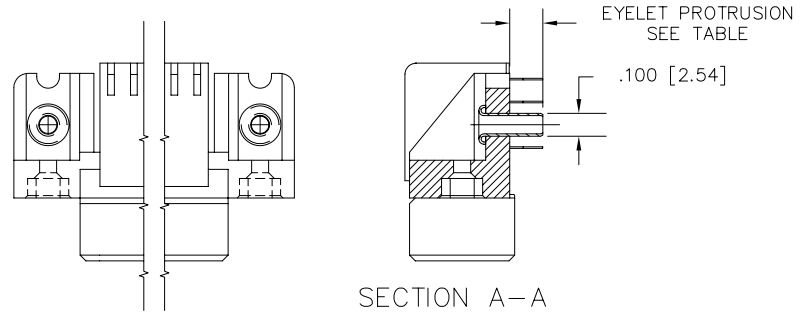
mat'l. code SEE NOTE 3				surface ISO 1302 ✓	tolerance ISO 406 ISO 1101	projection INCH/MM	product family HPC
ltr	ecn	no	dr	date	tolerances unless otherwise specified		title
V					angles linear 0°±2'	linear .XX±.01/.3 .XXX±.005/.13 .XXXX±.0020/.051	4 ROW R/A RECEPTACLE PRESS FIT, 2 GUIDE PINS
					dr	G.PETERS 6/12/93	dwg no
					enr	S.CLARK 6/12/93	sheet2 of 6 size
					chr	S.CLARK 6/12/93	50644 A3
					appd	S.CLARK 6/12/93	type Product Customer Drawing
sheet index	revision sheet						

PRODUCT NUMBER
SEE TABLE



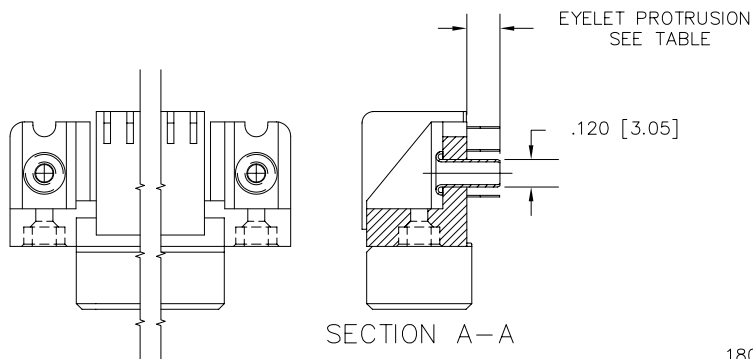
SECTION A-A

SPECIAL FEATURE OPTION A



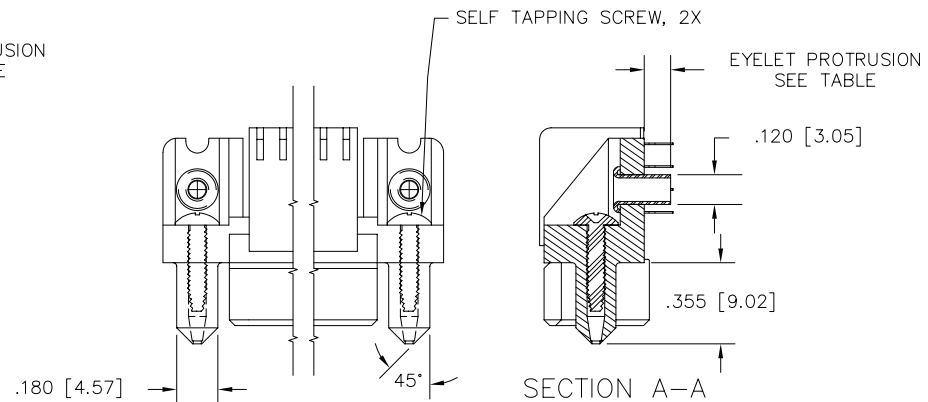
SECTION A-A

SPECIAL FEATURE OPTION B



SECTION A-A

SPECIAL FEATURE OPTION C



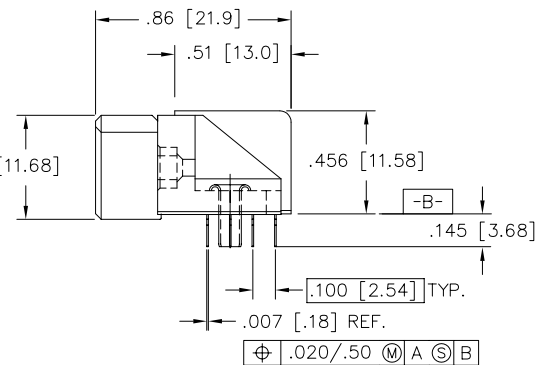
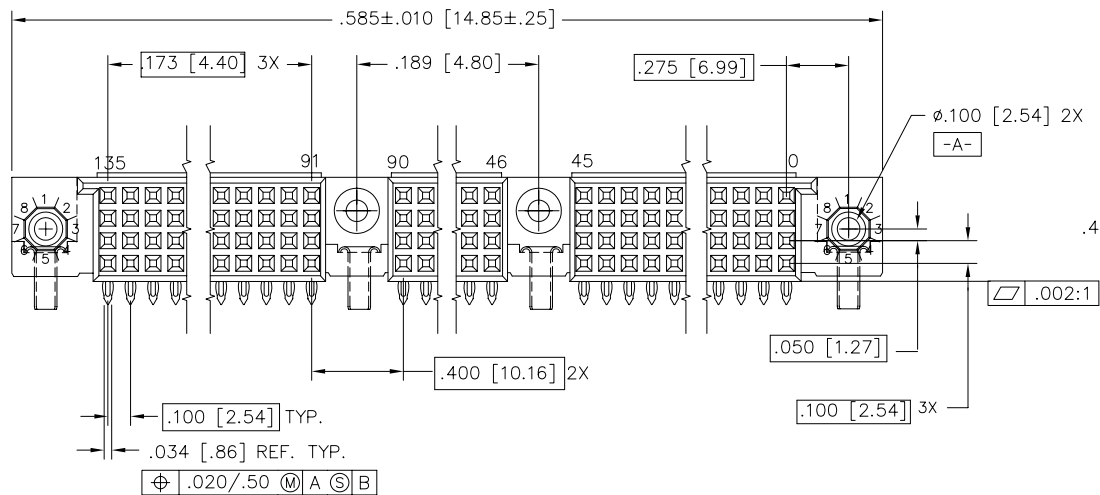
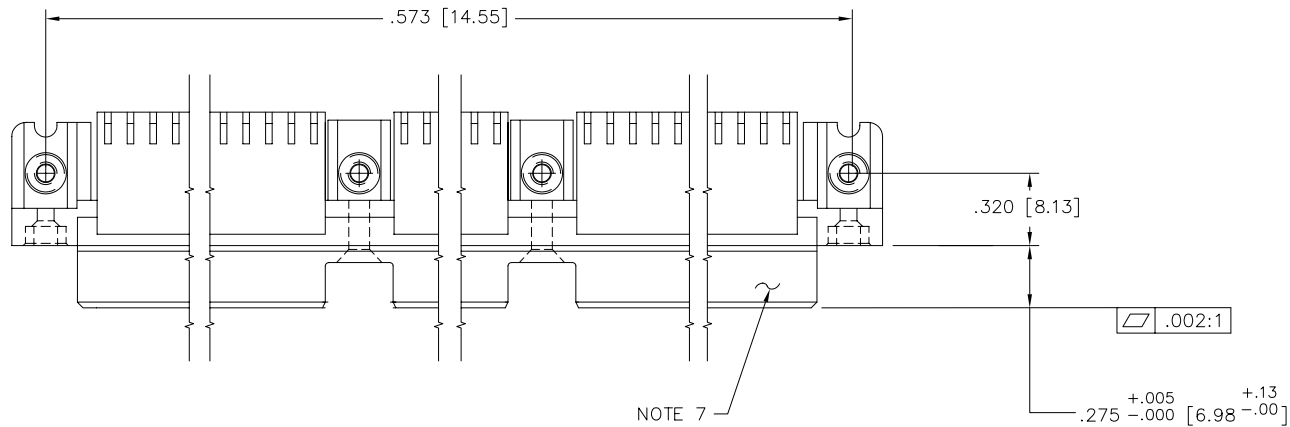
SECTION A-A

SPECIAL FEATURE OPTION D

mat'l. code				surface ISO 1302 ✓	tolerance ISO 406 ISO 1101	projection INCH/MM	product family HPC
ltr	ecn	no	dr	tolerances unless otherwise specified			title
V				angles	linear	scale 1:1	4 ROW R/A RECEPTACLE PRESS FIT, 2 GUIDE PINS
				0°±2'	.XX±.01/.3 .XXX±.005/.13 .XXXX±.0020/.051		dwg no
			dr	G.PETERS	6/12/93	FCI	sheet 3 of 6 size
			enr	S.CLARK	6/12/93		50644 A3
			chr	S.CLARK	6/12/93		
			appd	S.CLARK	6/12/93		type Product Customer Drawing
sheet index	revision sheet						

PRODUCT NUMBER
50644-XX002
50644-XX002LF

50644-XX002 AND 50644-XX002LF ONLY



NOTES FOR -XX002 AND XX002LF ONLY:

- ALL POSITIONS LOADED WITH .145[3.68] TAIL LENGTH.
- SIZE 4 x 135
TOTAL NUMBER OF POSITIONS - 540
TOTAL NUMBER OF POSITIONS LOADED - 540

mat'l. code		surface	tolerance	projection	product family
ISO 1302		ISO 406	ISO 1101	INCH/MM	HPC
ltr	ecn	no	dr	date	title
V					4 ROW R/A RECEPTACLE
					PRESS FIT, 2 GUIDE PINS
					dwg no
					sheet5 of 6
					size
					A3
					type
					Product Customer Drawing
sheet	revision				
index	sheet				

Mouser Electronics

Authorized Distributor

Click to View Pricing, Inventory, Delivery & Lifecycle Information:

FCI:

[50644-1600ED](#)