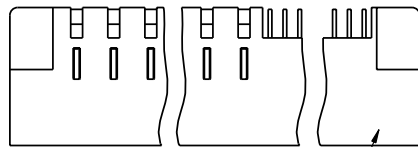


Tous droits strictement réservés. Reproduction ou communication à des tiers sans charge sans autorisation écrite du propriétaire. Propriété de FCI. Droits de reproduction FCI.

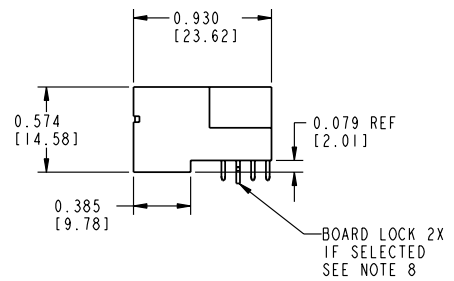
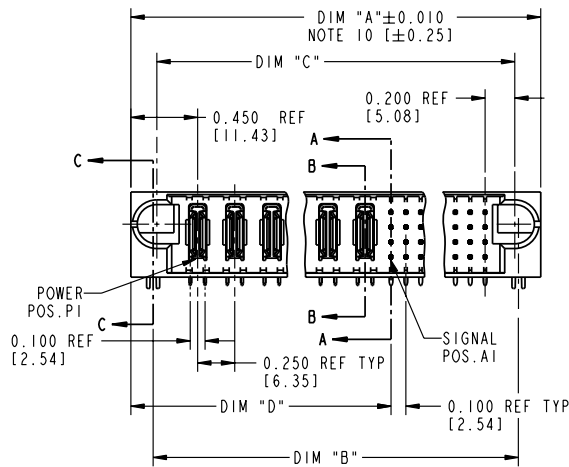


All rights strictly reserved. Reproduction or issue to third parties in any form or by any means without written authority from the proprietor. Property of FCI. Copyright FCI.

PRODUCT NUMBER
51732- YYY
SEE NOTE 1



SEE NOTE 9



mat'l code		NOTE 2		tolerances unless otherwise specified		CUSTOMER COPY		ELECTRONICS www.fciconnect.com	
ltr	ecm no.	dr	date	linear	.XX±.01/.X±.3	projection	title		
A	V02387	JRW	10-03-00		.XXX±.005/.XX±.13	 INCH / MM scale 1:1	RIGHT ANGLE HEADER W/GUIDE PIN POWER/SIGNAL SPECIALS		
B	V02738	JRW	11-21-00	angles	.XXX±.0020/.XXX±.051		product family	PwrBlade	code
C	V20771	JWS	04-19-02		0°±2°	size	dwg no	51732	SHEET 1 OF 4
sheet index	revision sheet	C	C	C	C				

form no. 7530-001-103

cage code 22526

PDM: Rev:C STATUS:Released Printed: Aug 11, 2007

Tous droits strictement réservés. Reproduction ou communication à des tiers sans autorisation écrite du propriétaire. Property of FCI. Droits de reproduction FCI.

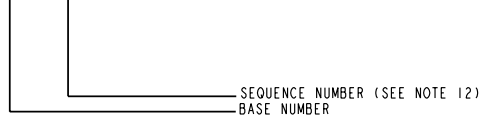
All rights strictly reserved. Reproduction or issue to third parties in any form is not permitted without written authority from the proprietor. Property of FCI. Copyright FCI.



PRODUCT NUMBER	DIM	LENGTH FORMULAS (SEE NOTE 10)
51732-YYY	DIM "A"	.250 [6.35] x BB + .100 [2.54] x (CCC/4) + .650 [16.51] (NOTE 10)
SEE NOTE 1	DIM "B"	.250 [6.35] x BB + .100 [2.54] x (CCC/4) + .350 [8.89]
	DIM "C"	.250 [6.35] x BB + .100 [2.54] x (CCC/4) + .300 [7.62]
	DIM "D"	.250 [6.35] x BB + .375 [9.53]
	DIM "F"	.250 [6.35] x BB + .100 [2.54] x (CCC/4) + .680 [17.27]
	DIM "G"	.250 [6.35] x BB + .225 [5.72]

CONNECTOR NOTES

① PRODUCT NUMBER CODE:
51732 - YYY



- ② HOUSING MATERIAL: UL 94 V-0 GLASS FILLED HIGH TEMP THERMO PLASTIC.
SIGNAL CONTACT MATERIAL: COPPER ALLOY
POWER CONTACT MATERIAL: COPPER ALLOY
- 3. PLATING:
SIGNAL CONTACTS: 30u" / 0.76u OVER 50u" / 1.27u Ni
POWER CONTACTS: 50u" / 1.27u Ni UNDER ALL; WITH
30u" / 0.76u" Au ON CONTACT AREA
WITH SnPb ON PCB INTERFACE
- 4. LEFT END POWER CONTACTS, 01 TO 20 AVAILABLE.
MAXIMUM OF 20 POWER CONTACTS PER CONNECTOR.
- 5. SIGNAL CONTACTS, 004 TO 148 AVAILABLE.
- 6. THIS PART IS NOT AVAILABLE WITH RIGHT SIDE
POWER CONTACTS.
- 7. TAIL LENGTH:
0.135 ± 0.020 [3.43 ± 0.50] SOLDER TO BOARD

- ⑧ RETENTION TO PCB OPTIONS:
BOARD LOCK (REQUIRES Ø .098 + 0.002, -0.001
[2.49 + 0.05 / -0.03] THRU HOLE IN PCB).
MOUNTING FOOT THICKNESS: 0.220 [5.59]
OR
Ø 0.150 [3.81] THRU HOLE (REQUIRES Ø 0.158 ± 0.003
[4.01 ± 0.07] THRU HOLE IN PCB).
MOUNTING FOOT THICKNESS: 0.160 [4.06]
- ⑨ MANUFACTURE'S NAME, P/N, AND DATE CODE
TO APPEAR ON THIS SURFACE.
- ⑩ THE MAXIMUM OVERALL LENGTH (DIM A) OF A PART
IS 8.00 [203.2]
- ⑪ PRODUCT SPECIFICATION GS-12-149
- ⑫ REFERENCE 51697 FOR SELECT LOAD/FMLB WORKSHEET.
SEE PRODUCT SPECIFIC DRAWING 51732-YYY FOR
SELECT LOAD/FMLB PRODUCT INFORMATION.

PCB NOTES:

- 13. ALL DIMENSIONS ARE BASIC UNLESS OTHERWISE SPECIFIED.
- 14. ALL THROUGH HOLES ARE LOCATED WITH A
TRUE POSITION OF 0.004 [0.10]
- 15. ALL HOLE DIAMETERS ARE FINISHED HOLE SIZE.
- 16. Ø 0.098 [2.49] THROUGH HOLES ARE UNPLATED
- 17. Ø 0.0453 ± 0.001 [1.151 ± 0.025] DRILLED HOLES PLATED WITH
0.0003 [0.007] MIN SnPb OVER 0.001 [0.03] TO 0.003 [0.08] Cu
PLATING TO ACHIEVE A Ø 0.040 ± 0.003 [1.02 ± 0.07] HOLE.

mat'l code				tolerances unless otherwise specified		CUSTOMER COPY		FCI ELECTRONICS www.fciconnect.com	
ltr	ecm no.	dr	date	linear	.xxx±.01/.xx±.3	projection	title	product family	code
C					.xxx±.0020/.xxx±.051	INCH / MM	RIGHT ANGLE HEADER W/GUIDE PIN POWER/SIGNAL SPECIALS	PwrBlade	213
				angles	0° ± 2°	scale	size	dwg no	SHEET
				dr	E. KORFF 07-27-00	1:1	A	51732	2
				enrg	J. BROWN 07-27-00				
				chr	J. BROWN 07-27-00				
				oppd	J. BROWN 07-27-00				
sheet index	revision sheet								

form no. 7530-001-103

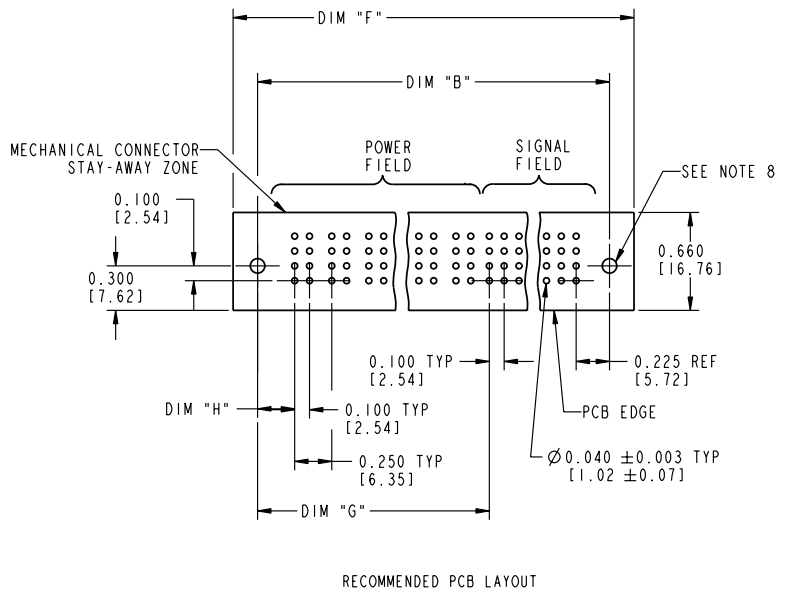
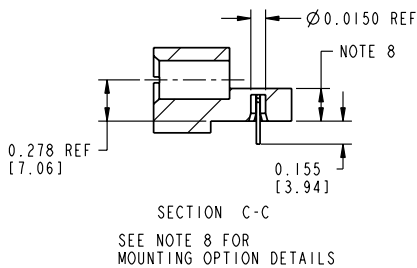
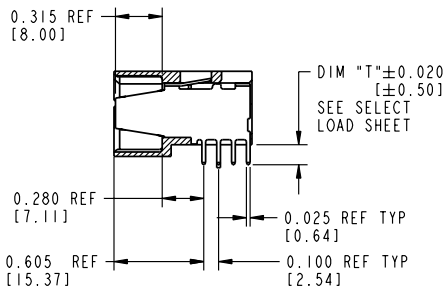
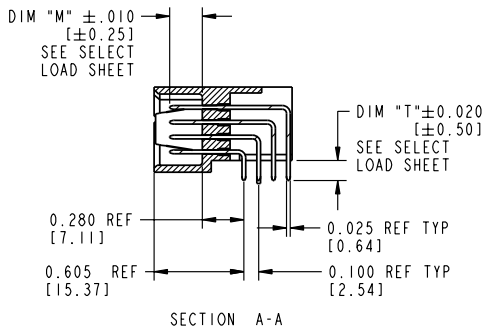
cage code 22526

Tous droits strictement réservés. Reproduction ou communication à des tiers sans charge est interdite sans autorisation écrite du propriétaire. Property of FCI. Droits de reproduction FCI.

All rights strictly reserved. Reproduction or issue to third parties in any form is not permitted without written authority from the proprietor. Property of FCI. Copyright FCI.



PRODUCT NUMBER
51732 - YYY



mat'l code				tolerances unless otherwise specified		CUSTOMER COPY		ELECTRONICS www.fciconnect.com	
lfr	ecm no.	dr	date	linear	.XX±.01/.X±.3	projection		title	
C					.XXX±.005/.XX±.13			RIGHT ANGLE HEADER W/GUIDE PIN	
				angles	.XXX±.0020/.XXX±.051			POWER/SIGNAL SPECIALS	
				dr	E. KORFF 07-27-00	scale	1:1	product family	PwrBlade
				enr	J. BROWN 07-27-00	size	A	dwg no	51732
				chr	J. BROWN 07-27-00			code	213
				appd	J. BROWN 07-27-00			SHEET	3
sheet index	revision sheet							cage code	22526

form no. 7530-001-103

PDM: Rev:C STATUS:Released Printed: Aug 11, 2007

Tous droits strictement réservés. Reproduction ou communication à des tiers sans autorisation écrite du propriétaire. Property of FCI. Droits de reproduction FCI.

All rights strictly reserved. Reproduction or issue to third parties in any form or by any means without written authority from the proprietor. Property of FCI. Copyright FCI.



CODE	DIM "M"	DIM "T"	TAIL TYPE	CONTACT TYPE
E	0.220 [5.59]	0.135 [3.43]	SOLDER	SIGNAL
F	0.220 [5.59]	0.135 [3.43]	SOLDER	SIGNAL
G	0.220 [5.59]	0.135 [3.43]	SOLDER	SIGNAL
H	0.220 [5.59]	0.135 [3.43]	SOLDER	SIGNAL
R	0.270 [6.86]	0.135 [3.43]	SOLDER	SIGNAL
S	0.270 [6.86]	0.135 [3.43]	SOLDER	SIGNAL
T	0.270 [6.86]	0.135 [3.43]	SOLDER	SIGNAL
U	0.270 [6.86]	0.135 [3.43]	SOLDER	SIGNAL
PA	N/A	0.135 [3.43]	SOLDER	POWER
HA	N/A	N/A	N/A	HOLD-DOWN
X	OMITTED	OMITTED	OMITTED	OMITTED

mat'l code		NOTE 2		tolerances unless otherwise specified		CUSTOMER		 www.fciconnect.com	
lfr	ecn no.	dr	date	linear	.XX±.01/.X±.3	projection	COPY		
C					.XXX±.005/.XX±.13			title RIGHT ANGLE HEADER W/GUIDE PIN POWER/SIGNAL SPECIALS	
				angles	.XXX±.0020/.XXX±.051			product family PwrBlade	
				dr	0°±2°	INCH / MM		size	code
				enr	E. KORFF 07-27-00	scale	1:1	dwg no	213
				chr	J. BROWN 07-27-00				sheet
				oppd	J. BROWN 07-27-00			51732	4
sheet index	revision sheet								

form no. 7530-001-103

cage code 22526

PDM: Rev:C STATUS:Released Printed: Aug 11, 2007