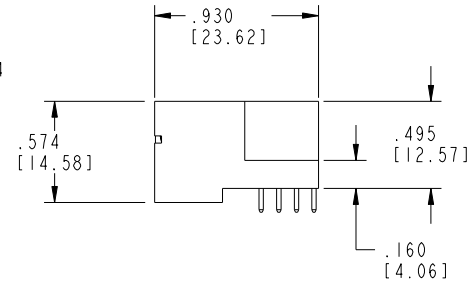
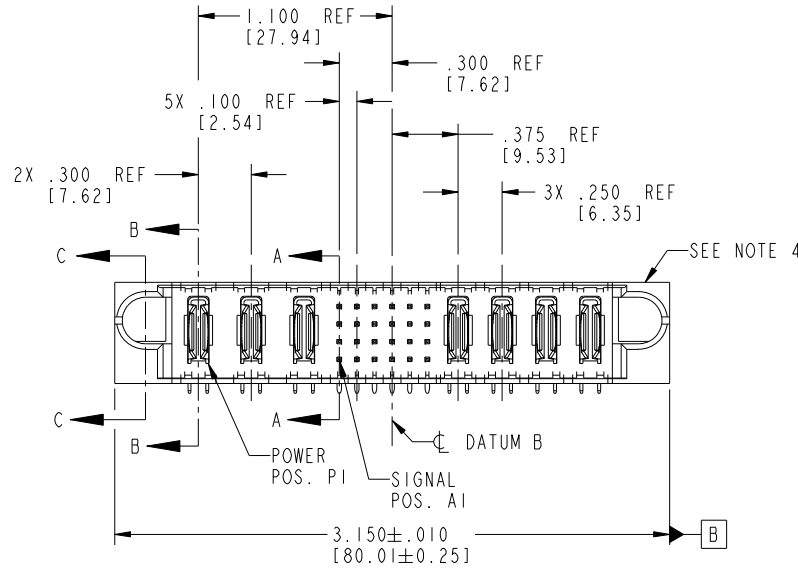


Tous droits strictement reserves. Reproduction ou communication a des tiers interdite sous quelque forme que ce soit sans autorisation écrite du propriétaire. Propriete de c FCI. Droits de reproduction FCI.



All rights strictly reserved. Reproduction or issue to third parties in any form whatever is not permitted without written authority from the proprietor. Property of FCI. Copyright FCI.

PRODUCT NO.	ROWS	POWER			SIGNAL				POWER				E2
		E1	P1	P2	P3	1	2	3	4	5	6	P4	
51939-180 NOTE ③	D C B A												



CODE	DIM "M" MATING LENGTH	CONTACT TYPE
R	.270 [6.86]	SIGNAL
S	.270 [6.86]	SIGNAL
T	.270 [6.86]	SIGNAL
U	.270 [6.86]	SIGNAL
E	.220 [5.59]	SIGNAL
PA	N/A [N/A]	POWER

mat'l code				SEE NOTE 2		tolerances unless otherwise specified		CUSTOMER		 www.fciconnect.com	
ltr	ecn no.	dr	date	linear	.XX±.01/0.X±0.3	projection		COPY		title	
A	DG05-0098	JM	05/05/05		.XXX±.005/0.XX±0.13			A		3ACP + 24S + 4P RIGHT ANGLE SOLDER HEADER	
B	DG06-0001	RYAN	01/04/06	angles	.XXX±.002/0.XXX±0.051			INCH/MM		product family	
C	DG09-0003	WD	03/18/09		0°±2°	scale		1:1		PwrBlade	
				dr	JM Guo 05/05/05	size		A		code	
				enr	SLUO 05/05/05	dwg no		51939-180		213	
				chr	VICTOR LIN 05/05/05	sheet		1 of 4			
				appd	JOSEPH HSIA 05/05/05	cage code		22526			
sheet index	revision sheet	C	C	C	C						
		1	2	3	4						

1 | 2

Pro/E

3 |

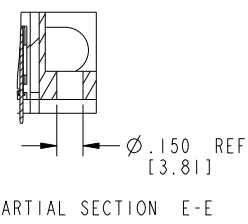
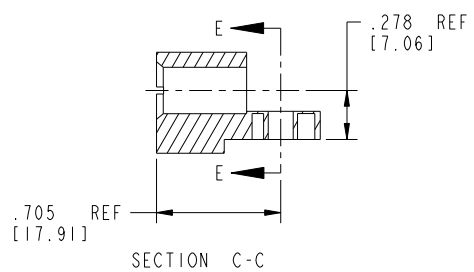
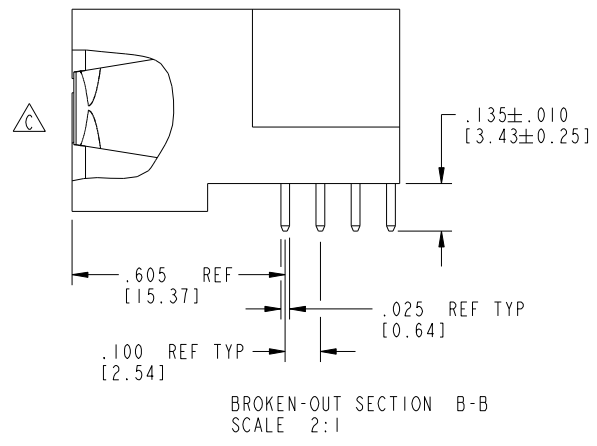
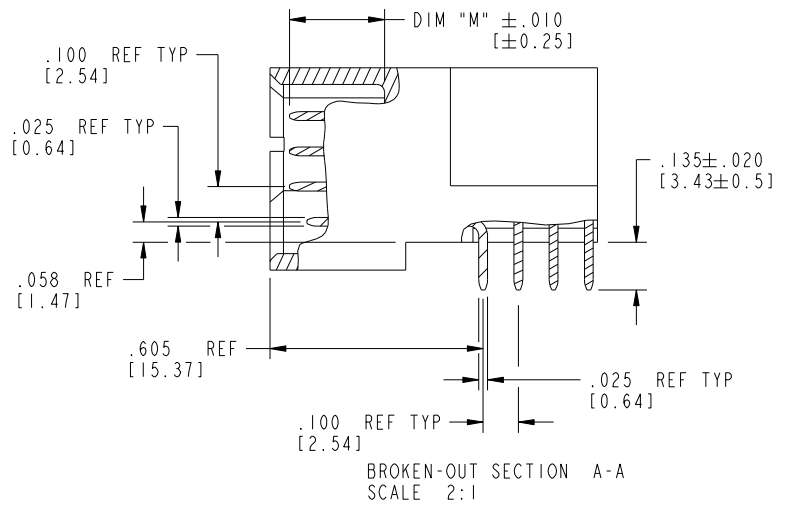
cage code 22526

4

Tous droits strictement reserves. Reproduction ou communication a des tiers interdicte sous quelque forme que ce soit sans autorisation ecrite du proprietaire. Propriete de c FCI. Droits de reproduction FCI.

All rights strictly reserved. Reproduction or issue to third parties in any form whatever is not permitted without written authority from the proprietor. Property of FCI. Copyright FCI.

PRODUCT NUMBER
51939-180--
NOTE ③



mat'l code		SEE NOTE 2		tolerances unless otherwise specified		CUSTOMER		FCJ	
litr	ecn no.	dr	date	linear	.XX±.01/0.X±0.3	COPY		www.fciconnect.com	
C				linear	.XXX±.005/0.XX±0.13	projection		title 3ACP + 24S + 4P	
				angles	.XXX±.0020/0.XXX±0.051	INCH/MM		RIGHT ANGLE SOLDER HEADER	
				dr	JM Guo 05/05/05	scale		product family PwrBlade code 213	
				enr	SLUO 05/05/05	1:1		size dwg no 213	
				chr	VICTOR LIN 05/05/05			sheet 2 of 4	
				appd	JOSEPH HSIA 05/05/05			A 51939-180	
sheet index	revision sheet								

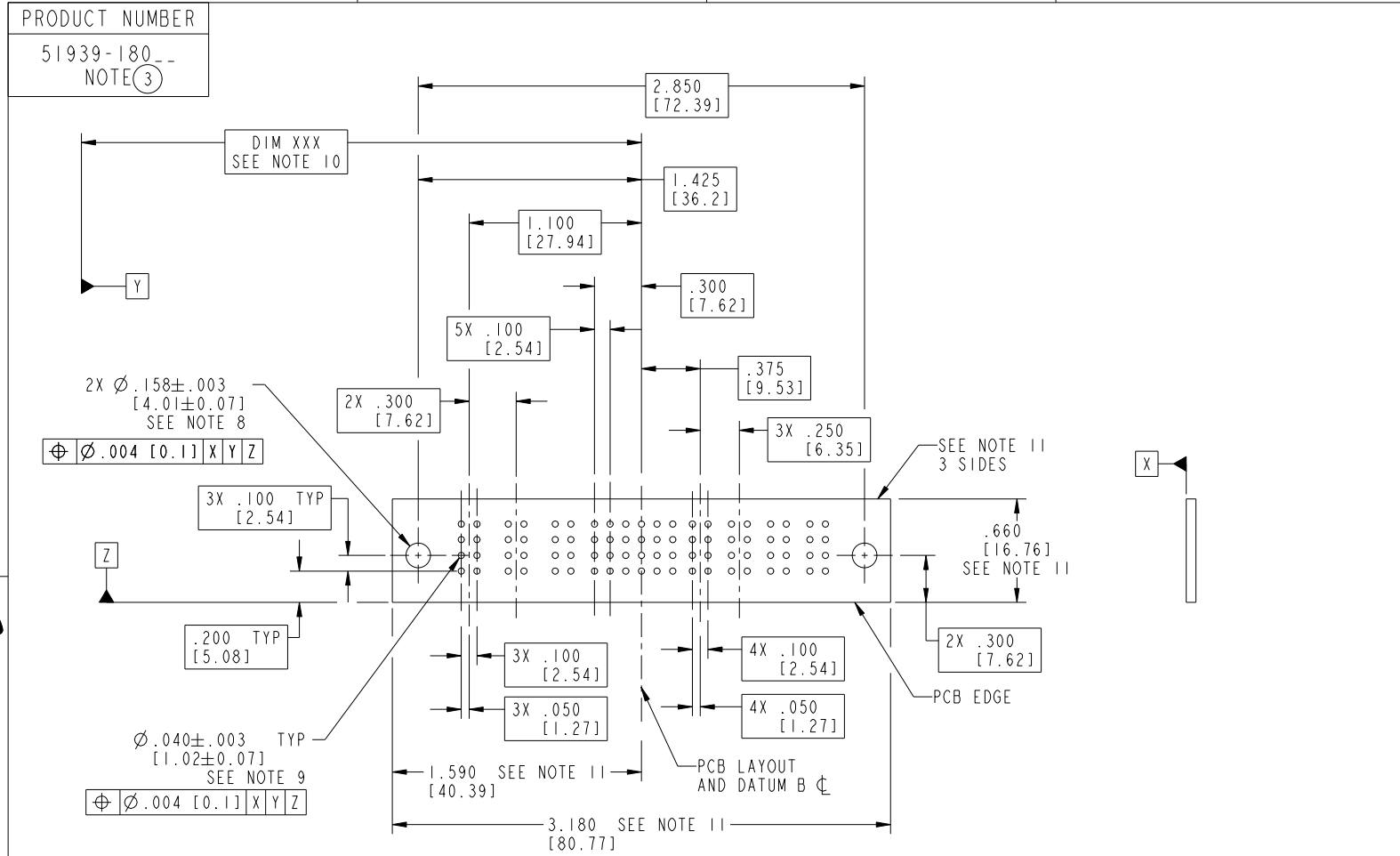
Pro/E

cage code 22526

Tous droits strictement réservés. Reproduction ou communication à des tiers interdite sous quelque forme que ce soit sans autorisation écrite du propriétaire. Propriété de c FCI. Droits de reproduction FCI.



All rights strictly reserved. Reproduction or issue to third parties in any form whatever is not permitted without written authority from the proprietor. Property of FCI. Copyright FCI.



RECOMMENDED PCB LAYOUT

mat'l code		SEE NOTE 2		tolerances unless otherwise specified		CUSTOMER		 www.fciconnect.com	
lfr	ecn no.	dr	date	linear	.XX±.01/0.X±0.3	COPY		title	
C					.XXX±.005/0.XX±0.13	projection		3ACP + 24S + 4P	
				angles	.XXX±.0020/0.XXX±0.051			RIGHT ANGLE SOLDER HEADER	
				dr	0°±2°	INCH/MM		product family	
				enr	JM Guo 05/05/05	scale		PwrBlade	
				chr	SLUO 05/05/05	1:1		code	
				appd	VICTOR LIN 05/05/05			size	
					JOSEPH HSIA 05/05/05			dwg no	
sheet index	revision sheet							A	
								51939-180	
								3 of 4	

cage code 22526

Tous droits strictement reserves. Reproduction ou communication a des tiers interdite sous quelque forme que ce soit sans autorisation écrite du propriétaire. Propriete de c FCI. Droits de reproduction FCI.



All rights strictly reserved. Reproduction or issue to third parties in any form whatever is not permitted without written authority from the proprietor. Property of FCI. Copyright FCI.

PRODUCT NUMBER
51939-180--
NOTE (3)

NOTES:

1. DIMENSIONS AND TOLERANCES ARE IN ACCORDANCE WITH ASME Y14.5M, 1994 UNLESS OTHERWISE SPECIFIED.

CONNECTOR NOTES:

- (2.) HOUSING MATERIAL: UL 94 V-0 GLASS FILLED HIGH-TEMP THERMOPLASTIC
POWER CONTACT MATERIAL: COPPER ALLOY
SIGNAL PIN MATERIAL: COPPER ALLOY
- △ 3. SEE ITEM 1 & 2 IN PRINT 10064183 FOR PLATING SPEC OF 51939-180 AND 51939-180LF RESPECTIVELY.
- (4.) MANUFACTURER'S NAME, P/N, AND DATE CODE TO APPEAR ON THIS SURFACE.
- 5. PRODUCT SPECIFICATION GS-12-149.
APPLICATION SPECIFICATION BUS-20-067.
- 6. PACKAGED IN TRAYS.

PCB NOTES:

- 7. ALL HOLE DIAMETERS ARE FINISHED HOLE SIZE.
- (8.) MOUNTING HOLES, WHERE APPLICABLE, ARE UNPLATED.
- (9.) $\varnothing .0453 \pm .0010$ [1.151 ± 0.025] DRILLED HOLES PLATED WITH
.0003 [0.008] MIN SnPb OVER .001 [0.03]
TO .003 [0.08] Cu PLATING TO ACHIEVE
 $\varnothing .040 \pm .003$ [1.02 ± .07] HOLE.
- (10.) "DIM XXX" TO BE DETERMINED BY THE CUSTOMER.
- (11.) CONNECTOR KEEP-OUT ZONE.
- △ 12. A/C SYMBOL WILL BE NEXT TO ANY DIMENSION, VIEW, OR NOTE WHICH HAS BEEN MODIFIED WITH THE CURRENT DRAWING REVISION.

mat'l code		SEE NOTE 2		tolerances unless otherwise specified		CUSTOMER		FCI	
ltr	ecn no.	dr	date	linear	.XX±.01/0.X±0.3	COPY		www.fciconnect.com	
C					.XXX±.005/0.XX±0.13	projection		title 3ACP + 24S + 4P	
				angles	.XXX±.002/0.XXX±0.051			RIGHT ANGLE SOLDER HEADER	
				dr	0° ± 2°	INCH/MM		product family PwrBlade code 213	
				enr	JM Guo 05/05/05	scale		size dwg no 213	
				chr	SLUO 05/05/05	1:1		sheet 4 of 4	
				appd	VICTOR LIN 05/05/05	A		51939-180	
					JOSEPH HSIA 05/05/05				
sheet index	revision sheet								

cage code 22526