







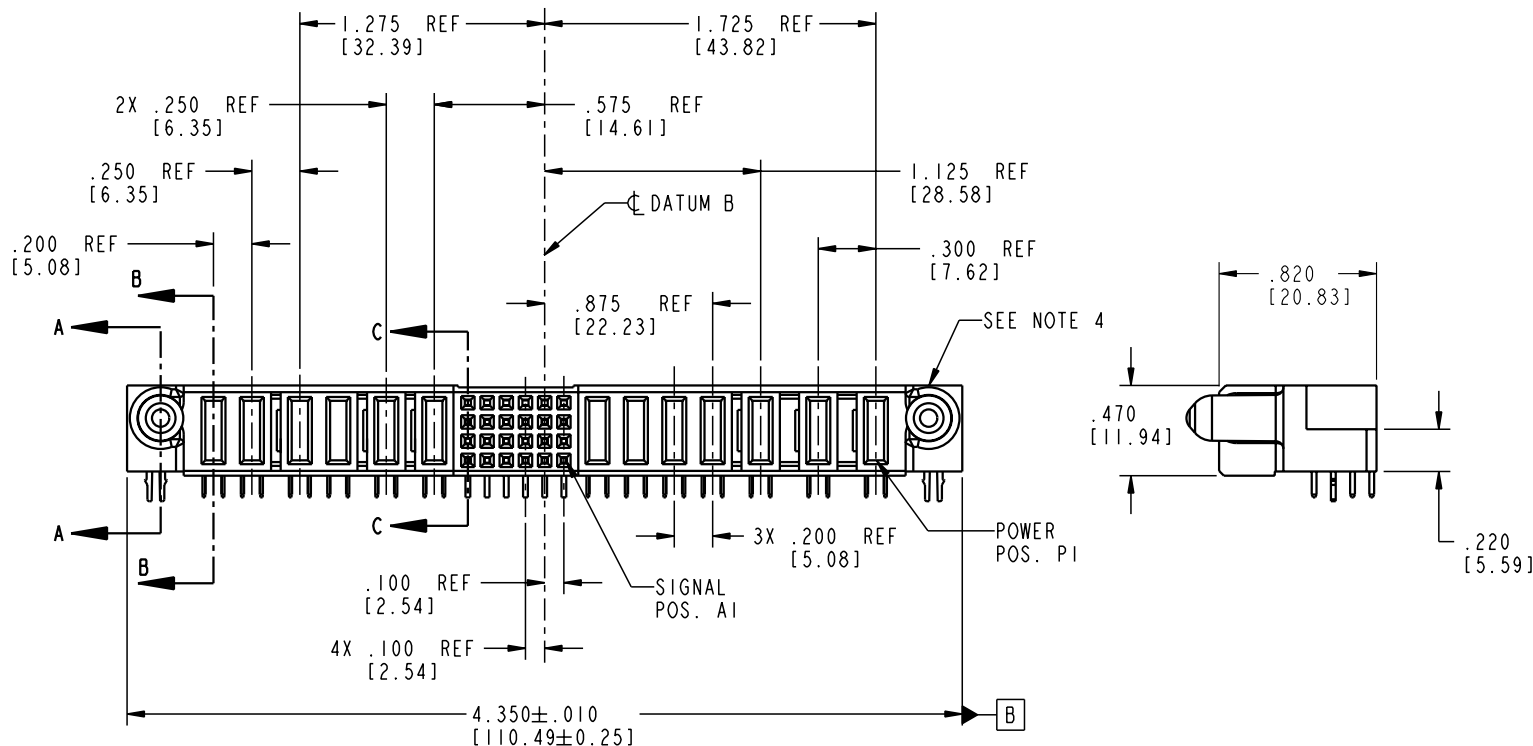
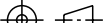


All rights strictly reserved. Reproduction or issue to third parties in any form whatever is not permitted without written authority from the proprietor.  
Property of FCI. Copyright FCI.

PRODUCT NO.	ROWS									SIGNAL										EI		
		E2	P13	P12	P11	P10	P9	P8	6	5	4	3	2	1	P7	P6	P5	P4	P3		P2	P1
51915-018	D C B A		PC	PC	PC	PA	PA	PA	HH	HH	HH	HH	HH	HH	PA	PA	PC	PC	PA	PC	PC	
									GG	GG	GG	GG	GG	GG								
									FF	FF	FF	FF	FF	FF								
									EE	EE	EE	EE	EE	EE								



CODE	DIM "M" MATING LENGTH	CONTACT TYPE
E	N/A [N/A]	SIGNAL
F	N/A [N/A]	SIGNAL
G	N/A [N/A]	SIGNAL
H	N/A [N/A]	SIGNAL
PA	.042 [1.07]	POWER
PC	.092 [2.34]	POWER
HA	N/A [N/A]	HOLD-DOWN

mat'l code				SEE NOTE 2				tolerances unless otherwise specified				CUSTOMER				<div><div><div>A</div><div>FCI</div></div><div>www.fciconnect.com</div></div>					
lfr		ecn no.		dr		date		linear		.XX±.01/0.X±0.3				COPY				title 3ACP + 4P + 24S + 6P R/A SOLDER RECEPTACLE			
A		V21837		CGD		12/04/02				.XXX±.005/0.XX±0.13				projection							
										.XXXX±.002/0.XXX±0.051											
										angles				0°±2°							
										C. DAILY 12/04/02				INCH/MM				product family			
										engr M. MOSTOLLER 12/04/02				size				dwg no			
										chr M. MOSTOLLER 12/04/02				scale				A			
										appd M. MOSTOLLER 12/04/02				1:1				51915-018			
sheet index		revision sheet		A 1		A 2		A 3		A 4											

Pro/E

3

cage code	22526
-----------	-------

4

**PDM: Rev:A**

STATUS: **Released**

Printed: Dec 20, 2010

Tous droits strictement réservés. Reproduction ou communication a des tiers interdite sous quelque forme que ce soit sans autorisation écrite du propriétaire. Propriété de c FCI. Droits de reproduction FCI.

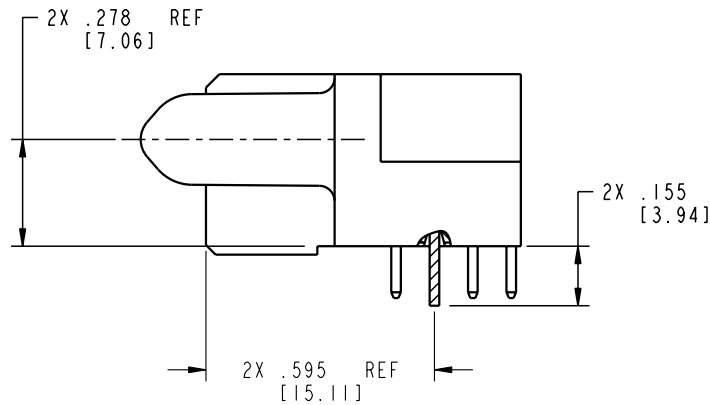
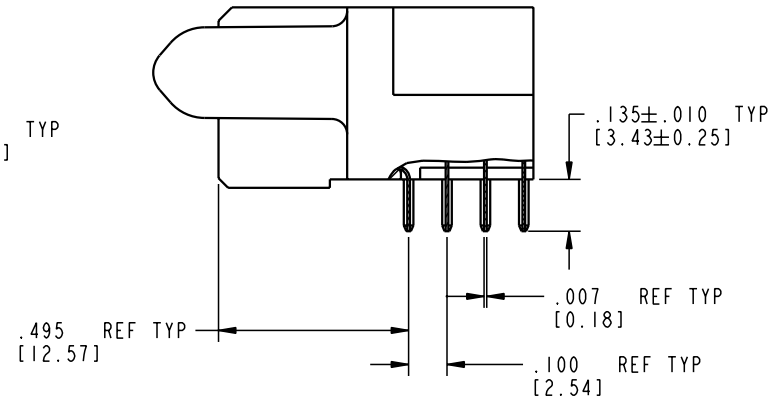
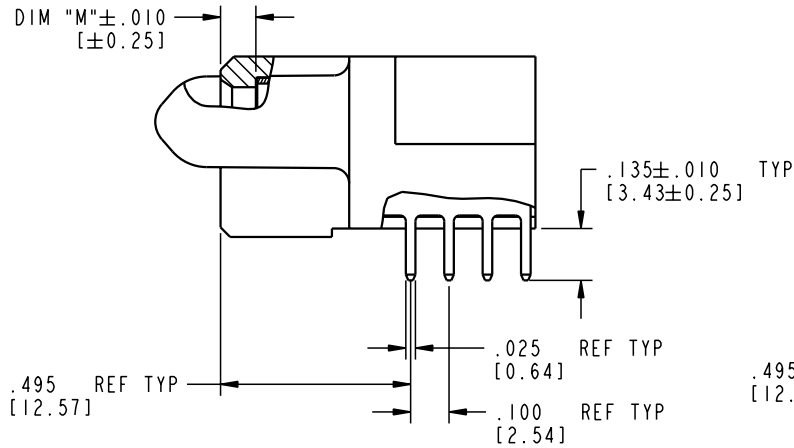
A

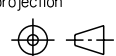
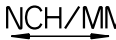
All rights strictly reserved. Reproduction or issue to third parties in any form whatever is not permitted without written authority from the proprietor. Property of FCI. Copyright FCI.

FCI

B

PRODUCT NUMBER  
51915-018



mat'l code SEE NOTE 2				tolerances unless otherwise specified		CUSTOMER		<div><div>A</div><div>FCI</div><div>www.fciconnect.com</div></div>				
lfr	ecn no.	dr	date	linear	.XX±.01/0.X±0.3	COPY		projection 	title			
A					.XXX±.005/0.XX±0.13	3ACP + 4P + 24S + 6P						
					.XXXX±.0020/0.XXX±0.051	R/A SOLDER RECEPTACLE						
				angles	0°±2°	INCH/MM			product family		code	
				dr	C. DAILY 12/04/02	PwrBlade			213			
				enrg	M. MOSTOLLER 12/04/02	size			dwg no	sheet		
				chr	M. MOSTOLLER 12/04/02	scale			A	51915-018	2	
				appd	M. MOSTOLLER 12/04/02	1:1						
sheet index		revision sheet										

Pro/E

3

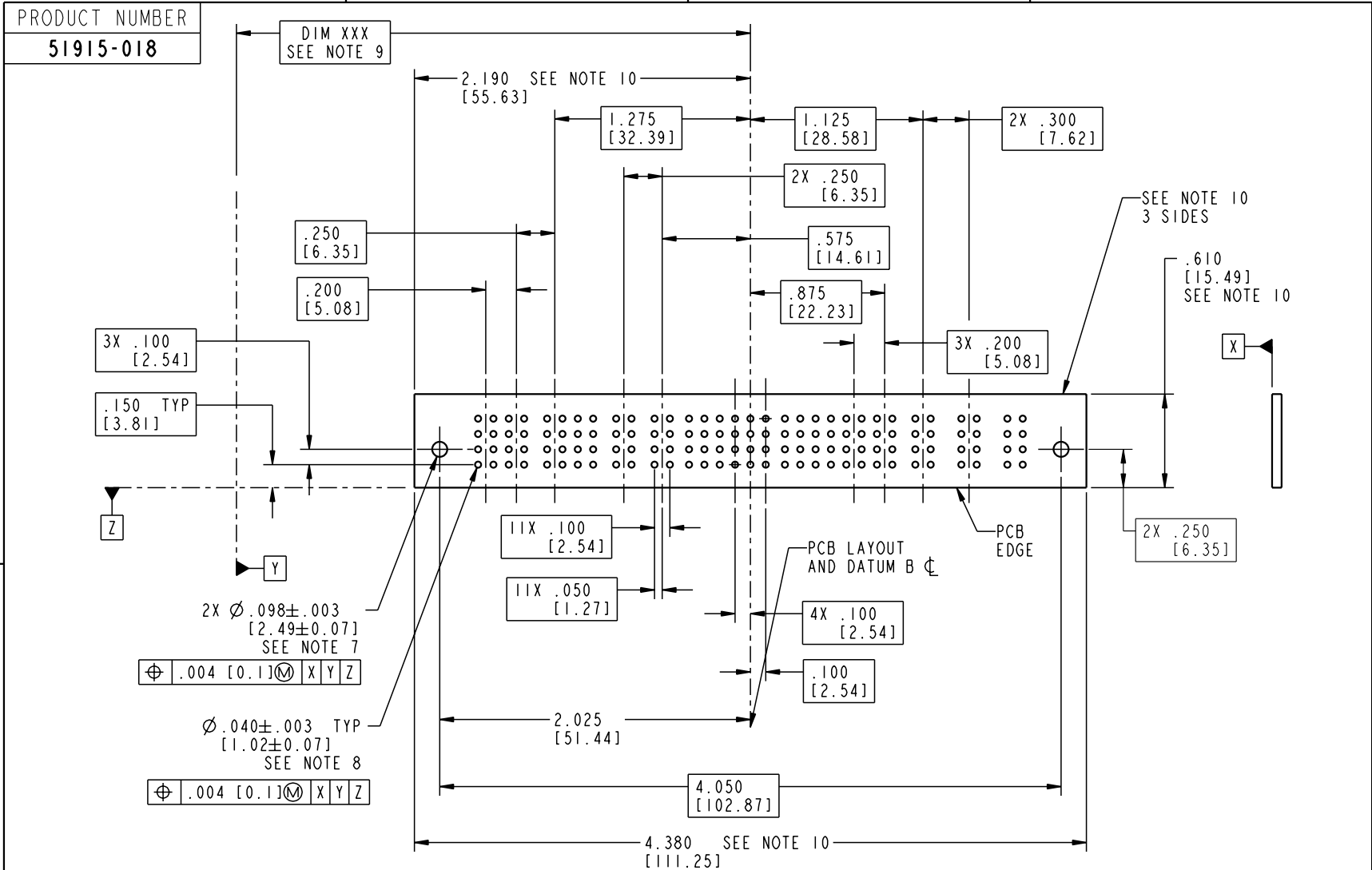
cage code  
22526

4

PDM: Rev:A

STATUS: Released

Printed: Dec 20, 2010



mat'l code				SEE NOTE 2		tolerances unless otherwise specified		CUSTOMER		 www.fciconnect.com	
lfr	ecn no.	dr	date			linear	.XX±.01/0.X±0.3	COPY			
A						projection	.XXX±.005/0.XX±0.13			 title	
						angles	.XXX±.0020/0.XX±0.051				
				dr	C. DAILY	12/04/02		INCH/MM		product family	
				enr	M. MOSTOLLER	12/04/02		scale			
				chr	M. MOSTOLLER	12/04/02		1:1		size	
				appd	M. MOSTOLLER	12/04/02					
sheet index		revision sheet								A	

cage code 22526

Pro/E

3

4

PDM: Rev:A

STATUS: Released

Printed: Dec 20, 2010

PRODUCT NUMBER  
**51915-018**

NOTES:

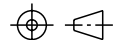
1. DIMENSIONS AND TOLERANCES ARE IN ACCORDANCE WITH ASME Y14.5M, 1994 UNLESS OTHERWISE SPECIFIED.

CONNECTOR NOTES:

- ② HOUSING MATERIAL: UL 94 V-0 GLASS FILLED  
HIGH-TEMP THERMOPLASTIC  
POWER CONTACT MATERIAL: COPPER ALLOY  
SIGNAL PIN MATERIAL: COPPER ALLOY
3. PLATING:  
SIGNAL PINS: 30u"/0.76um Au OVER 50u"/1.27um Ni  
POWER CONTACTS: 50u"/1.27um Ni UNDER ALL  
WITH 30u"/0.76um Au ON CONTACT AREA  
AND SnPb ON PCB AND PLUG INTERFACE
- ④ MANUFACTURER'S NAME, P/N, AND DATE CODE TO APPEAR ON THIS SURFACE.
5. PRODUCT SPECIFICATION GS-12-149.  
APPLICATION SPECIFICATION BUS-20-067.

PCB NOTES:

6. ALL HOLE DIAMETERS ARE FINISHED HOLE SIZE.
- ⑦ MOUNTING HOLES, WHERE APPLICABLE, ARE UNPLATED.
- ⑧  $\varnothing .0453 \pm .0010$  [1.151  $\pm$  0.025] DRILLED HOLES PLATED  
WITH .0003 [0.008] MIN SnPb OVER .001 [0.03]  
TO .003 [0.08] Cu PLATING TO ACHIEVE  
 $\varnothing .040 \pm .003$  [1.02  $\pm$  .07] HOLE.
- ⑨ "DIM XXX" TO BE DETERMINED BY THE CUSTOMER.
- ⑩ CONNECTOR KEEP-OUT ZONE.
11. PACKAGE IN TRAYS.

mat'l code				SEE NOTE 2		tolerances unless otherwise specified		CUSTOMER		<div><div>A</div><div>FCI</div><div>www.fciconnect.com</div></div>	
ltr	ecn no.	dr	date	linear	.XX±.01/0.X±0.3		COPY		<div><div>projection</div><div></div></div>	title 3ACP + 4P + 24S + 6P R/A SOLDER RECEPTACLE	
A			.XXX±.005/0.XX±0.13								
			.XXX±.0020/0.XXX±0.051								
				angles	0°±2°						
			dr	C. DAILY	12/04/02	INCH/MM		product family		PwrBlade	code
			enrg	M. MOSTOLLER	12/04/02			size		dwg no	213
			chr	M. MOSTOLLER	12/04/02	scale		A		51915-018	sheet
			appd	M. MOSTOLLER	12/04/02	1:1					4
sheet index		revision sheet									

# Mouser Electronics

Authorized Distributor

Click to View Pricing, Inventory, Delivery & Lifecycle Information:

FCI:

[51915-018](#)