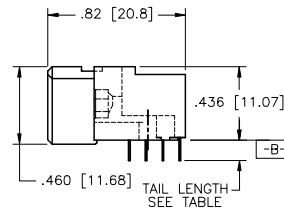
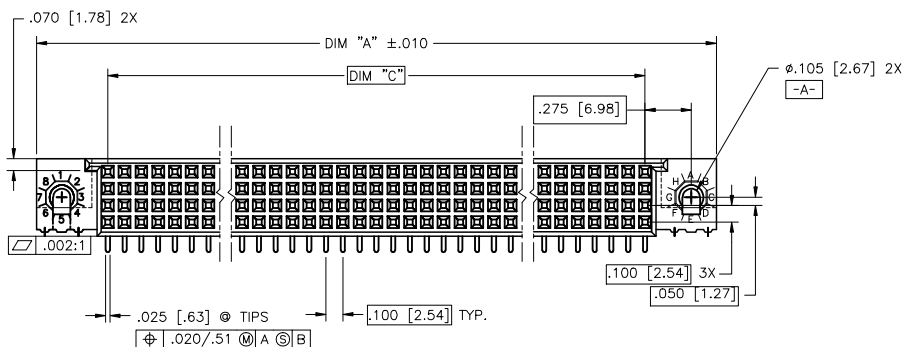
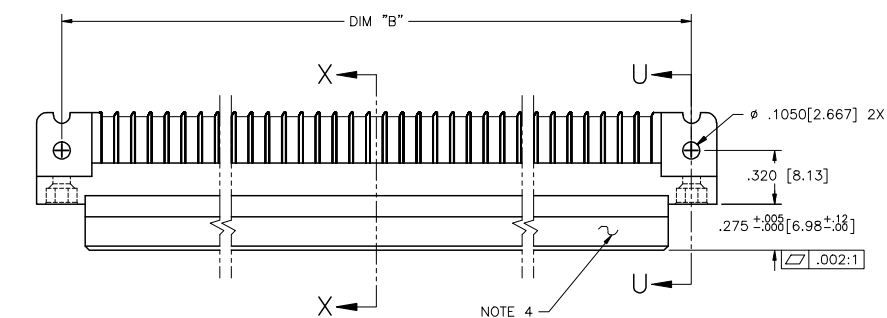


PRODUCT NUMBER  
SEE TABLE



mal't. code				surface	tolerance	projection	product family
NOTE 3				ISO 1902	ISO 468 ISO 1001		HPC
lfr	ecm no	dr	date	tolerances unless otherwise specified			
R	V05-0694	TAB	7/26/05	angles	linear	XX±.01/XX±.03	INCH/MM
S	V05-0909	DCH	9/23/05			XXX±.005/XXX±.013	scale 1:1
T	V05-1041	HTB	11/14/05	0'±2'		XXXX±.000/XXXX±.005	
U	M06-0255	MHT	7/06/06	dr	D.SHEAFFER	8/27/92	
V	M06-0476	MHT	12/05/06	engr	S.CLARK	9/30/92	
W	M07-0237	AGS	7/17/07	chr	S.CLARK	9/30/92	
X	M08-0308	MHT	10/23/08	appd	S.CLARK	9/30/92	
sheet	revision	X	X	X	X		
index	sheet	1	2	3	4		

title	product family
4 ROW R/A RECEPTACLE	HPC
GENERIC, MOUNT, S.T.B. 0 G.P.	
dwg no	sheet 1 of 4 size
50576	A3
type	Product Customer Drawing

PRODUCT NUMBER	NUMBER OF POSITIONS, NOTE 2	TAIL LENGTH	SOLDER TAIL PLATING	CONTACT AREA PLATING (NOTE 8)
50576-1YYYY	YYY	.125±.010/3.18±.25	TIN-LEAD	30u"/.76u GOLD
50576-1YYYYLF	YYY	.125±.010/3.18±.25	TIN	30u"/.76u GXT
50576-1YYYYF	YYY	.145±.010/3.68±.25	TIN-LEAD	30u"/.76u GOLD
50576-1YYYYH	YYY	.180±.010/4.57±.25	TIN-LEAD	30u"/.76u GOLD
50576-3YYYY	YYY	.125±.010/3.18±.25	TIN-LEAD	50u"/1.27u GOLD
50576-3YYYYF	YYY	.145±.010/3.68±.25	TIN-LEAD	50u"/1.27u GOLD
50576-3YYYYH	YYY	.180±.010/4.57±.25	TIN-LEAD	50u"/1.27u GOLD
50576-5YYYY	YYY	.125±.010/3.18±.25	TIN-LEAD	30u"/.76u GXT
50576-5YYYYLF	YYY	.125±.010/3.18±.25	TIN	30u"/.76u GXT
50576-5YYYYF	YYY	.145±.010/3.68±.25	TIN-LEAD	30u"/.76u GXT
50576-5YYYYH	YYY	.180±.010/4.57±.25	TIN-LEAD	30u"/.76u GXT
50576-5YYYYLF	YYY	.145±.010/3.68±.25	TIN	30u"/.76u GXT
50576-5YYYYH	YYY	.180±.010/4.57±.25	TIN-LEAD	30u"/.76u GXT
50576-5YYYYLF	YYY	.180±.010/4.57±.25	TIN	30u"/.76u GXT
50576-XX004	100	.125±.010/3.18±.25	TIN-LEAD	30u"/.76u GXT
50576-XX004LF	100	.125±.010/3.18±.25	TIN	30u"/.76u GXT
50576-XX008	80	.125±.010/3.18±.25	TIN-LEAD	30u"/.76u GOLD
50576-XX008LF	80	.125±.010/3.18±.25	TIN	30u"/.76u GXT

NOTE 7 (CUSTOMER SPECIAL)

SEE SHEET 3

SEE SHEET 4

#### NOTES:

##### ① PRODUCT NUMBERING CODE:

50576 - X YYY Z LF  
 LEAD FREE (OPTIONAL)  
 TAIL LENGTH (NOTE 5)  
 NO. OF POSITIONS (NOTE 2)  
 PLATING (NOTE 4)  
 BASE NUMBER

##### PRODUCT NUMBERING CODE FOR SELECT LEAD PART NUMBERS:

50576 - XXYYY LF  
 LEAD FREE (OPTIONAL)  
 SEQUENCE NUMBER  
 ALWAYS "XX"  
 BASE NUMBER

② THIS PRODUCT IS CONFIGURED IN SIZES OF 6 THRU 80 COLUMNS IN INCREMENTS OF ONE. I.E.: 6,7,8,9.....79,80.

③ HOUSING MATERIAL: GLASS AND MINERAL FILLED HIGH TEMP. THERMOPLASTIC. FLAME RETARDANT PER UL94V-0. COLOR: BLACK. CONTACT MATERIAL: BeCu

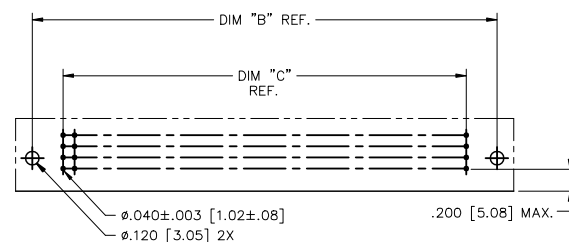
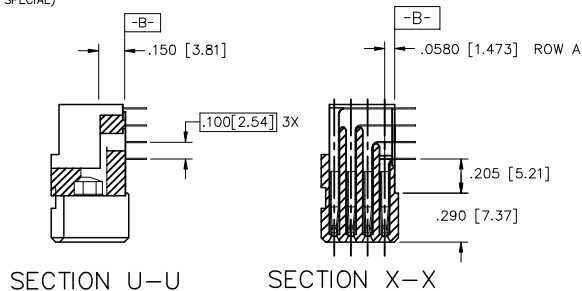
④ MANUFACTURE'S NAME, PART NUMBER AND LOT CODE TO APPEAR ON THIS SURFACE PER BUS-12-108.

5. DIMENSION "A" CALCULATION = .100(2.54) x NO. OF COLUMNS + .75(19.1)  
 DIMENSION "B" CALCULATION = .100(2.54) x NO. OF COLUMNS - .450(11.43)  
 DIMENSION "C" CALCULATION = .100(2.54) x NO. OF COLUMNS - .100(2.54)

6. THIS PRODUCT (WITH 'LF' SUFFIX) MEETS EUROPEAN UNION DIRECTIVES AND OTHER COUNTRY REGULATIONS AS DESCRIBED IN GS-22-008. THIS HOUSING WILL WITHSTAND EXPOSURE TO 260°C PEAK TEMPERATURE FOR 10-30 SECONDS IN A CONVECTION, INFRA-RED OR VAPOR PHASE REFLOW OVEN.

⑦ FOR P/N 50576-3YYYY (CUSTOMER ALCATEL) USE CONTACT PLATING 30u"/0.76u GXT

⑧ PLATING OPTIONS:  
 MAYBE EITHER GOLD OR GXT PLATED AT MANUFACTURER CHOICE



#### RECOMMENDED PCB LAYOUT (ALL HOLES LOCATED ON .100 [2.54] GRID UNLESS OTHERWISE SPECIFIED)

mal't code				surface	tolerance	projection	product family
NOTE 3				ISO 1902	ISO 468		HPC
lfr	ecm no	dr	date	tolerances unless otherwise specified			
x				angles	linear	XX±.01/XX±.03	title
						XXX±.005/XXX±.013	4 ROW R/A RECEPTACLE
				dr	D.SHEAFFER	8/27/92	GENERIC, MOUNT, S.T.B. 0 G.P.
				engr	S.CLARK	9/30/92	dwg no
				chr	S.CLARK	9/30/92	50576
				appd	S.CLARK	9/30/92	type
sheet	revision						Product Customer Drawing
index	sheet						

50576-XX004 AND -XX004LF SPECIAL LOAD PATTERN IS SHOWN ON THIS SHEET

1. ALL POSITIONS ARE LOADED, EXCEPT WHERE NOTED
2. COLUMN 1, ROW A IS DESIGNATED AS SIGNAL TERM. 1, AS VIEWED FROM THE MATING FACE.

**PDM: Rev:X**      **STATUS:Released**      Printed: Feb 18, 2010

