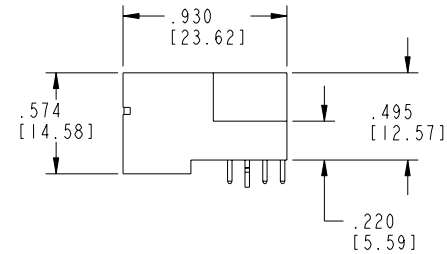
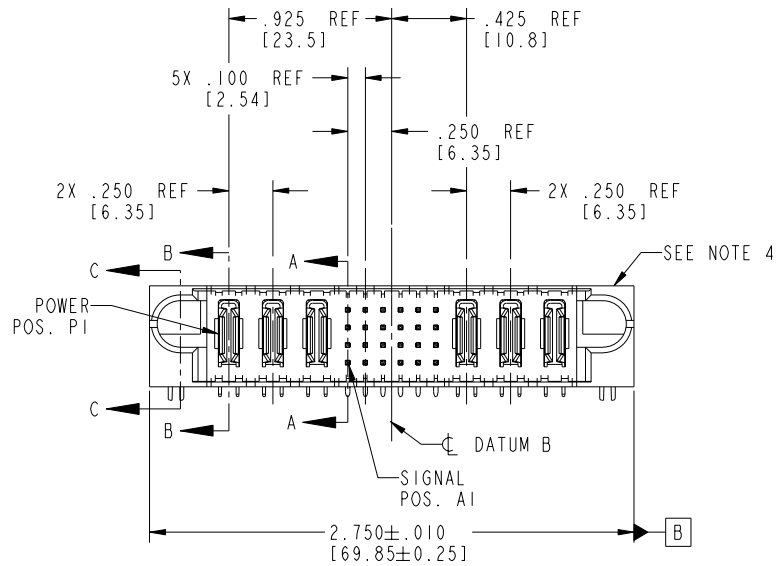
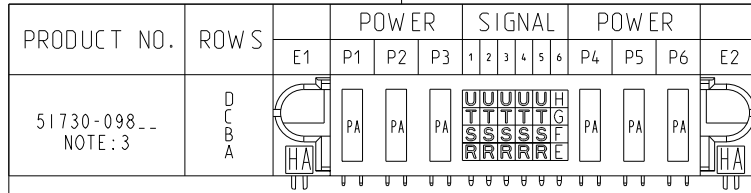


Tous droits strictement réservés. Reproduction ou communication à des tiers interdite sous quelque forme que ce soit sans autorisation écrite du propriétaire. Propriété de FCI. Droits de reproduction FCI.

FCI

All rights strictly reserved. Reproduction or issue to third parties in any form whatever is not permitted without written authority from the proprietor. Property of FCI. Copyright FCI.



CODE	DIM "M" MATING LENGTH	CONTACT TYPE
E	.220 [5.59]	SIGNAL
F	.220 [5.59]	SIGNAL
G	.220 [5.59]	SIGNAL
H	.220 [5.59]	SIGNAL
R	.270 [6.86]	SIGNAL
S	.270 [6.86]	SIGNAL
T	.270 [6.86]	SIGNAL
U	.270 [6.86]	SIGNAL
PA	N/A [N/A]	POWER
HA	N/A [N/A]	HOLD-DOWN

mat'l code				SEE NOTE 2		tolerances unless otherwise specified		CUSTOMER		FCI www.fciconnect.com	
ltr	ecn no.	dr	date	linear	angles	dr	engr	chr	appd	projection	title
A	V04-0652	TAB	06/21/04								3P + 24S + 3P
B	DG05-0549	CS	12/15/05								RIGHT ANGLE SOLDER HEADER
										INCH/MM	product family
										scale	PwrBlade
										1:1	code
											213
											sheet
											1 of 4
sheet index	revision	B	B	B	B	B	B	B	B		
sheet	sheet	1	2	3	4						

Pro/E

PDM: Rev:B

STATUS:Released

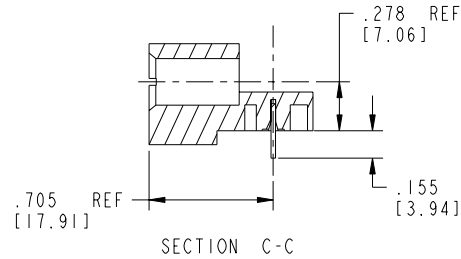
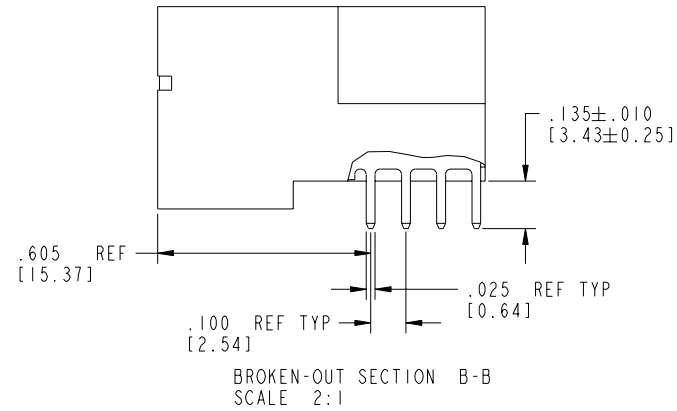
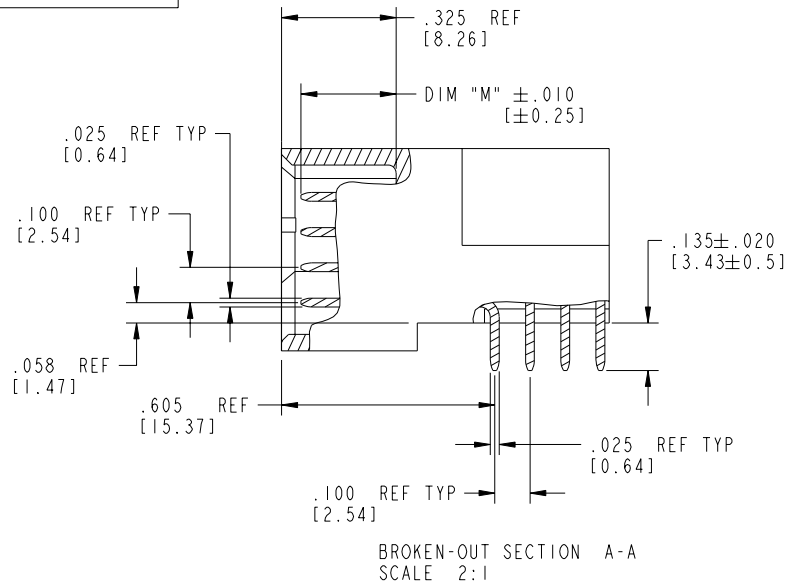
Printed: Dec 20, 2010

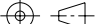

Tous droits strictement réservés. Reproduction ou communication a des tiers interdite sous quelque forme que ce soit sans autorisation écrite du propriétaire. Propriété de c FCI. Droits de reproduction FCI.

A
FCI

All rights strictly reserved. Reproduction or issue to third parties in any form whatever is not permitted without written authority from the proprietor. Property of FCI. Copyright FCI.

PRODUCT NUMBER
51730-098_-
NOTE: 3



mat'l code				SEE NOTE 2		tolerances unless otherwise specified		CUSTOMER		<div><div>A</div><div>FCI</div></div> <div>www.fciconnect.com</div>	
litr	ecm no.	dr	date	linear	.XX±.01/0.X±0.3		COPY			title	
B					.XXX±.005/0.XX±0.13		projection			3P + 24S + 3P	
					.XXX±.0020/0.XXX±0.051					RIGHT ANGLE SOLDER HEADER	
				angles	0°±2°		INCH/MM			product family	
				dr	T. BRUNGARD 06/21/04		scale			PwrBlade	
				engr	M. GRAY 06/21/04		1:1			code	
				chr	M. GRAY 06/21/04				size		dwg no
				appd	M. GRAY 06/21/04				A		
sheet index		revision sheet									
								</			

cage code 22526

Pro/E

PDM: Rev:B

STATUS:Released

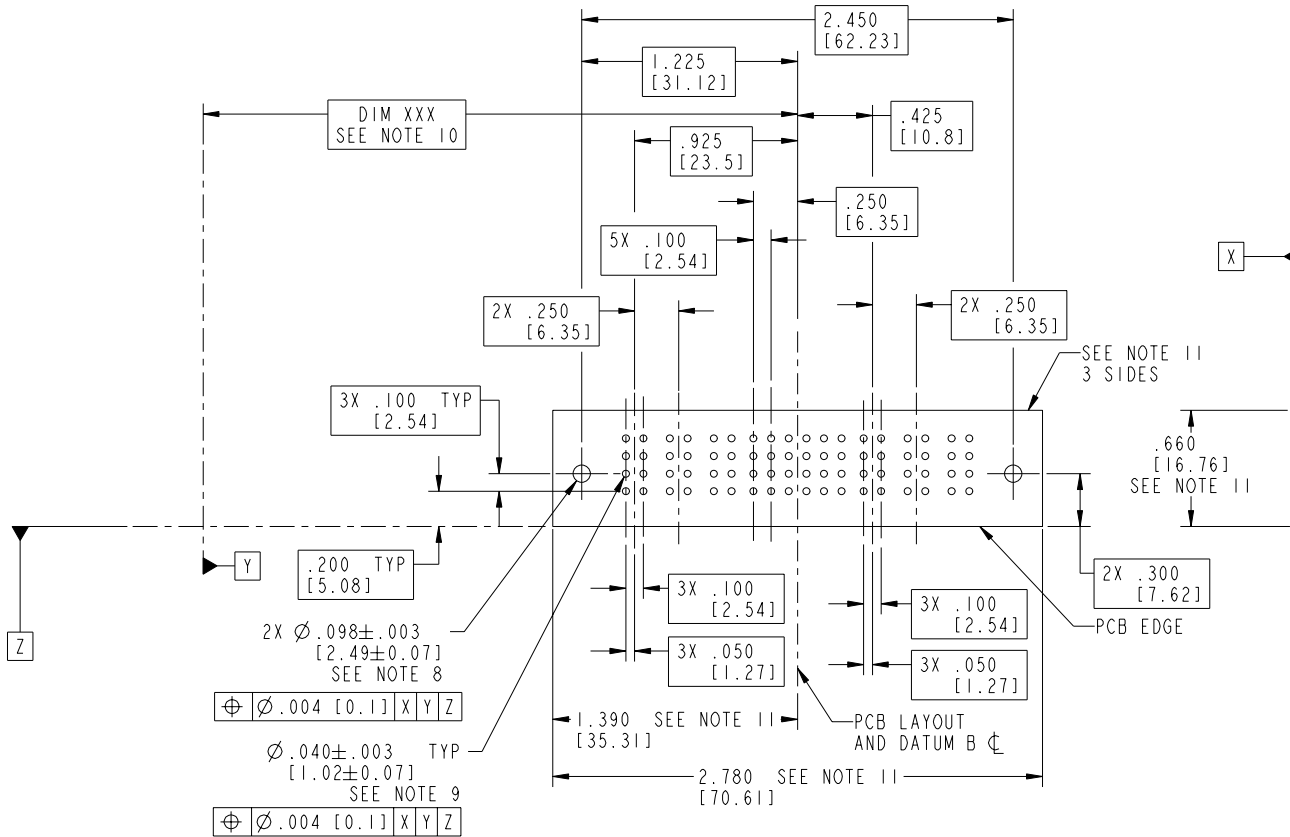
Printed: Dec 20, 2010

Tous droits strictement réservés. Reproduction ou communication a des tiers interdite sous quelque forme que ce soit sans autorisation écrite du propriétaire. Propriété de c FCI. Droits de reproduction FCI.

All rights strictly reserved. Reproduction or issue to third parties in any form whatever is not permitted without written authority from the proprietor. Property of FCI. Copyright FCI.

A
FCI

PRODUCT NUMBER
51730-098_
NOTE: 3



RECOMMENDED PCB LAYOUT

mat'l code				SEE NOTE 2		tolerances unless otherwise specified		CUSTOMER		A FCI		www.fciconnect.com	
litr	ecm no.	dr	date	linear	.XX±.01/0.X±0.3	projection	COPY	title	3P + 24S + 3P	product family	PwrBlade	code	213
B													
				angles	.XXX±.005/0.XX±0.13	INCH/MM	scale	size	dwg no	51730-098	sheet	3 of 4	cage code
				dr	0°±2°								
				engr	T. BRUNGARD 06/21/04	1:1	scale	A	51730-098	51730-098	3 of 4	cage code	22526
				chr	M. GRAY 06/21/04								
				appd	M. GRAY 06/21/04	1:1	scale	A	51730-098	51730-098	3 of 4	cage code	22526
sheet index	revision	sheet											

Pro/E

PDM: Rev:B

STATUS:Released

Printed: Dec 20, 2010

Mouser Electronics

Authorized Distributor

Click to View Pricing, Inventory, Delivery & Lifecycle Information:

[FCI / Amphenol:](#)

[51730-098](#)