


















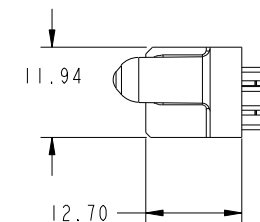
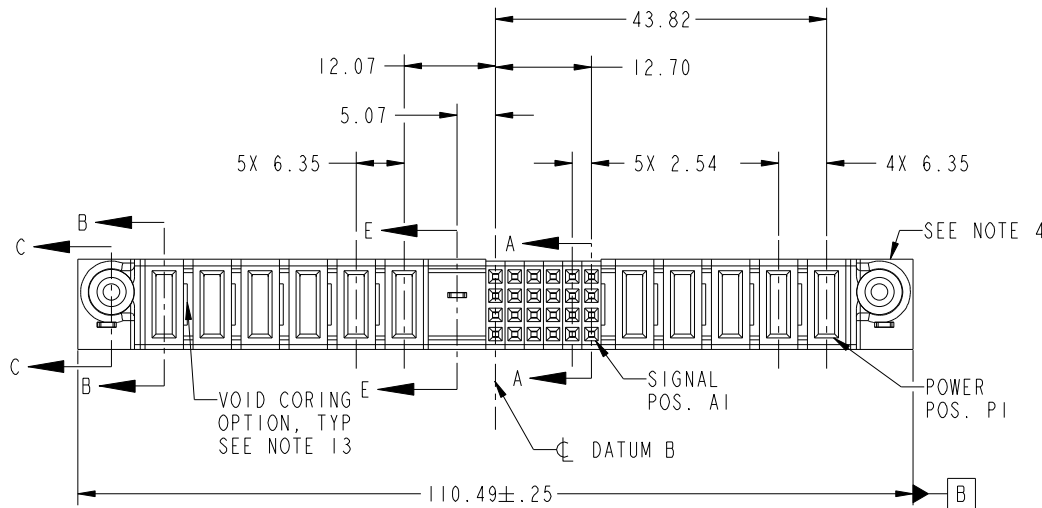




PRODUCT NO.	ROWS	POWER							HOLD	SIGNAL					POWER					E1
		E2	P11	P10	P9	P8	P7	P6		6	5	4	3	2	1	P5	P4	P3	P2	
51940-028-- NOTE: 3	D C B A																			



CODE	DIM "M" MATING LENGTH	CONTACT TYPE
E	[N/A]	SIGNAL
PA	[1.07]	POWER
PD	[2.34]	POWER
HA	[N/A]	HOLD-DOWN

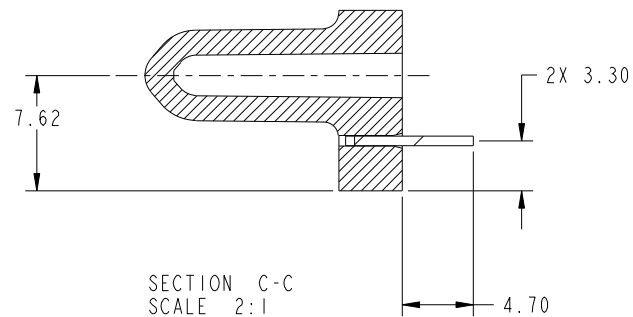
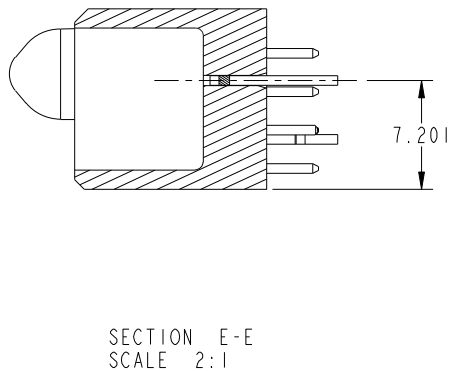
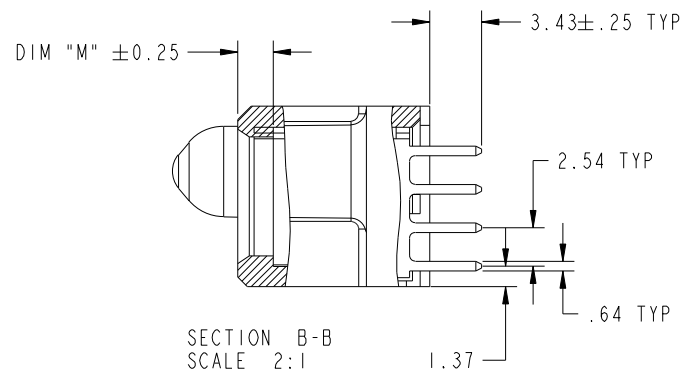
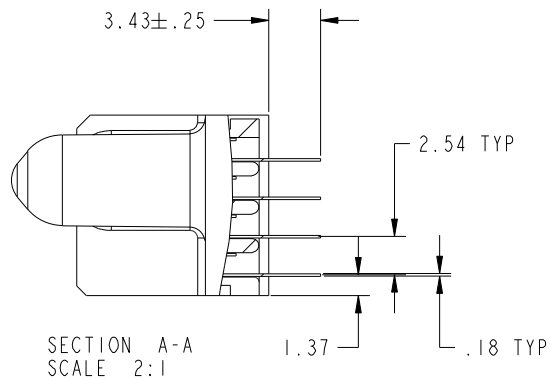
mat'l code				SEE NOTE		tolerances unless otherwise specified		CUSTOMER		FCI	
ltr	ecn no.	dr	date			linear	0.X ±0.5	COPY		www.fciconnect.com	
A	V03-0005	TAB	01/03/03				0.XX ±0.25	projection		title 5P + 24S + 1M + 6P VERTICAL SOLDER RECEPT	
B	DG05-0240	GuoJM	07/27/05			angles	0.XXX ±0.10				
C	DG07-0498	JW	09/12/08				0° ±2°			product family PwrBlade	
						dr	T.BRUNGARD 01/03/03	MM		size dwg no	
						engr	M. MOSTOLLER 01/03/03	scale		A 51940-028	
						chr	M. MOSTOLLER 01/03/03	1:1		sheet 1 of 4	
						appd	M. MOSTOLLER 01/03/03				
sheet index	revision sheet	C	C	C	C						
		1	2	3	4						

B

B

PRODUCT NUMBER

51940-028--
NOTE: 3

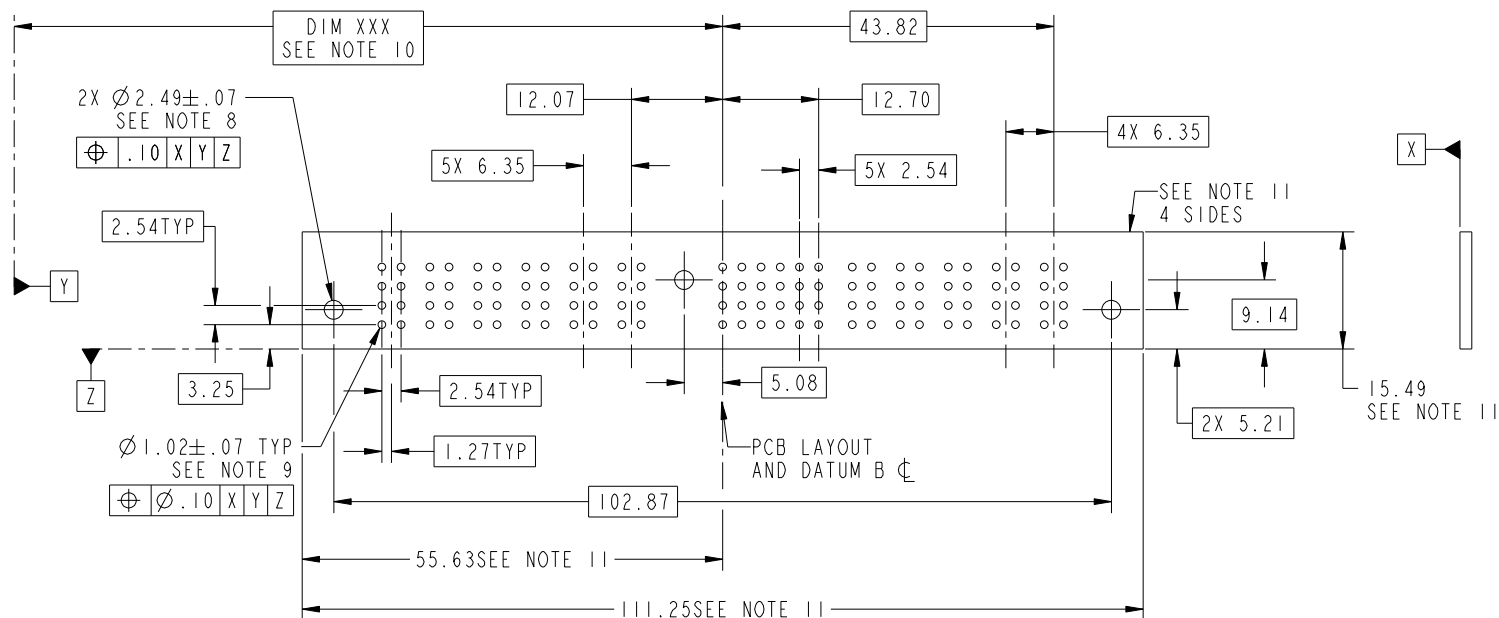


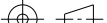
mat'l code				SEE NOTE		tolerances unless otherwise specified		CUSTOMER		FCI			
lir	ecn no.	dr	date					COPY		www.fciconnect.com			
C				linear		0.X ± 0.5		projection		title 5P + 24S + 1M + 6P VERTICAL SOLDER RECEPT			
						0.XX ± 0.25							
				angles		0.XXX ± 0.10							
						0° ± 2°				product family PwrBlade			
				dr	T.BRUNGARD	01/03/03		MM		size	dwg no	213	sheet
				enrg	M. MOSTOLLER	01/03/03		scale		A	51940-028	2	
				chr	M. MOSTOLLER	01/03/03		1:1					
				appd	M. MOSTOLLER	01/03/03							
sheet	revision												
index	sheet												



PRODUCT NUMBER

51940-028--
NOTE: 3



mat'l code				SEE NOTE				tolerances unless otherwise specified				CUSTOMER				<div>FCI</div> <div>www.fciconnect.com</div>			
lir	ecn no.		dr	date	linear	0.X ± 0.5				COPY				<div>projection</div> <div></div>	title 5P + 24S + 1M + 6P VERTICAL SOLDER RECEPT				
C						0.XX ± 0.25													
						0.XXX ± 0.10													
					angles	0° ± 2°													
					dr	T. BRUNGARD		01/03/03		<div>MM</div> <div>scale 1:1</div>				product family		PwrBlade		code	
					enrg	M. MOSTOLLER		01/03/03						size	dwg no		213		
					chr	M. MOSTOLLER		01/03/03						A		51940-028		sheet 3	
					appd	M. MOSTOLLER		01/03/03											
sheet index		revision sheet																	



www.fciconnect.com

5P + 24S + 1M + 6P
VERTICAL SOLDER RECEPT

product family PwrBlade

size dwg no

A 51940-028

code

213

sheet

3

cage code 22506

STATUS: Released

Printed: Dec 20, 2010

Pro/E

PDM: Rev: C



1 | 2

3

4

PRODUCT NUMBER

51940-028--
NOTE: 3

NOTES:

1. DIMENSIONS AND TOLERANCES ARE IN ACCORDANCE WITH
ASME Y14.5M, 1994 UNLESS OTHERWISE SPECIFIED.

CONNECTOR NOTES:

- ② HOUSING MATERIAL: UL 94 V-0 GLASS FILLED
HIGH-TEMP THERMOPLASTIC
POWER CONTACT MATERIAL: COPPER ALLOY
SIGNAL PIN MATERIAL: COPPER ALLOY

△ 3. PLATING:
SEE ITEM 5 & 6 IN PRINT 10064183 FOR PLATING SPEC OF 51940-028; 51940-028LF PRESPECTIVELY

④ MANUFACTURER'S NAME, P/N, AND DATE CODE TO APPEAR ON
THIS SURFACE.

5. PRODUCT SPECIFICATION GS-12-149.
APPLICATION SPECIFICATION BUS-20-067.

6. PACKAGED IN TRAYS.

PCB NOTES:

7. ALL HOLE DIAMETERS ARE FINISHED HOLE SIZE.

⑧ MOUNTING HOLES, WHERE APPLICABLE, ARE UNPLATED.

⑨ $\varnothing 1.151 \pm 0.025$ DRILLED HOLES PLATED WITH:
0.008 MIN SnPb OR Sn OVER 0.03
TO 0.08 Cu PLATING TO ACHIEVE
 $\varnothing 1.02 \pm .07$ HOLE.

⑩ "DIM XXX" TO BE DETERMINED BY THE CUSTOMER.

⑪ CONNECTOR KEEP-OUT ZONE.

12 A △ SYMBOL WILL BE NEXT TO ANY DIMENSION,
VIEW, OR NOTE WHICH HAS BEEN MODIFIED WITH
THE CURRENT DRAWING REVISION.

13. THE VOID CORING IN BETWEEN POWER MODULES, SIGNAL
MODULES AND END MODULES ARE OPTIONAL AND THE
SHAPE MAY BE DIFFERENT FOR OPTIMIZING THE MOLDING
PROCESS. THE VOID CORING WILL NOT
EFFECT TO PRODUCT FUNCTION.

mat'l code				SEE NOTE		tolerances unless otherwise specified		CUSTOMER		 www.fciconnect.com	
ltr	ecr no.	dr	date	linear	$0.X \pm 0.5$	COPY		projection		title	
C					$0.XX \pm 0.25$					5P + 24S + 1M + 6P VERTICAL SOLDER RECEPT	
				angles	$0.XXX \pm 0.10$					product family	
				dr	$0^\circ \pm 2^\circ$					PwrBlade	
				enrg	T.BRUNGARD 01/03/03			size		code	
				chr	M. MOSTOLLER 01/03/03			dwg no		213	
				appd	M. MOSTOLLER 01/03/03			A		sheet	
sheet	revision							51940-028		4	
index	sheet										

A

A

B

B

1 | 2

Pro/E

PDM: Rev:C

STATUS: Released

Printed: Dec 20, 2010

Mouser Electronics

Authorized Distributor

Click to View Pricing, Inventory, Delivery & Lifecycle Information:

[FCI / Amphenol:](#)

[51940-028](#)