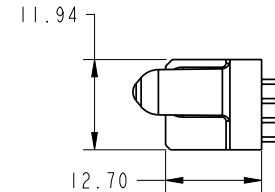
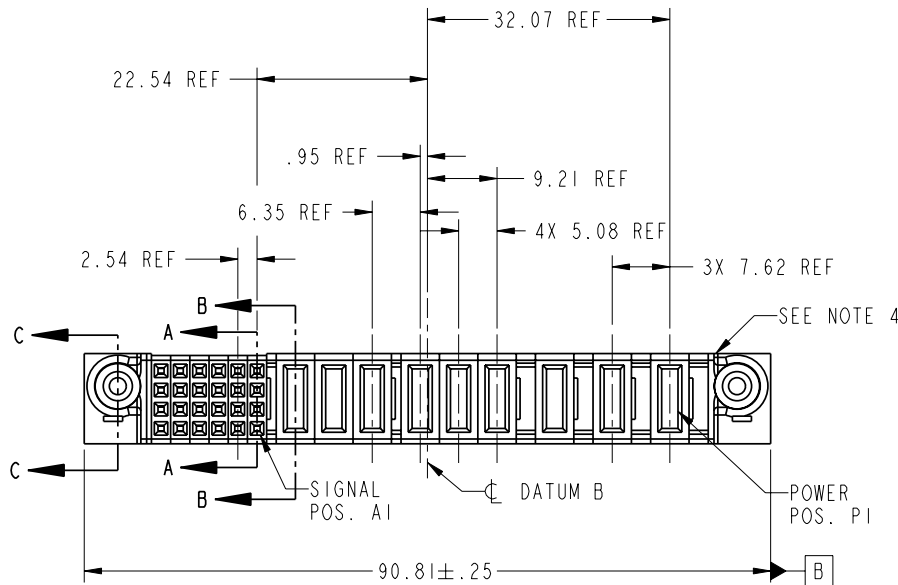


Tous droits strictement reserves. Reproduction ou communication a des tiers interdite sous quelque forme que ce soit sans autorisation écrite du propriétaire. Propriété de c FCI. Droits de reproduction FCI.






All rights strictly reserved. Reproduction or issue to third parties in any form whatever is not permitted without written authority from the proprietor. Property of FCI. Copyright FCI.

PRODUCT NO.	ROWS	SIGNAL										POWER							
		E2	6	5	4	3	2	1	P9	P8	P7	P6	P5	P4	P3	P2	P1	E1	
51940-189-- NOTE ③	D C B A		E	E	E	E	E	E	E	E	E	PD	PD	PD	PD	PD	PD	PD	



CODE	DIM "M" MATING LENGTH	CONTACT TYPE
E	[N/A]	SIGNAL
PD	[2.34]	POWER
PA	[1.07]	POWER

mat'l code				SEE NOTE 2				tolerances unless otherwise specified				CUSTOMER				 www.fciconnect.com				
lir	ecn no.	dr	date	linear	0.X ±0.3				COPY											
A	DG06-0182	Julia	05/11/06		0.XX ±0.10				title											
					0.XXX ±0.050				9P + 24S											
				angles	0° ±2°								VERTICAL STB RECEPT							
					dr Julia Wang 05/11/06															
					engr Sally Luo 05/11/06															
					chr Beer Fu 05/11/06				scale 1:1				product family PwrBlade				code 213			
					appd Joseph Hsia 05/11/06								size				dwg no 51940-189		sheet 1 of 4	
sheet index		revision sheet		A	A	A	A													
				1	2	3	4													

product family		code	
PwrBlade		213	
size		sheet	
A		1 of 4	

1 | 2

Pro/E

PDM: Rev: A

STAT: Released

Printed: Dec 20, 2010

Tous droits strictement reserves. Reproduction ou communication a des tiers interdite sous quelque forme que ce soit sans autorisation écrite du propriétaire. Propriete de c FCI. Droits de reproduction FCI.

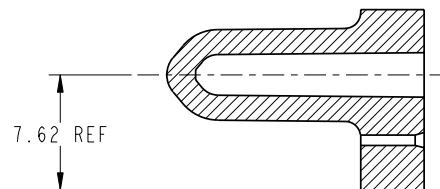
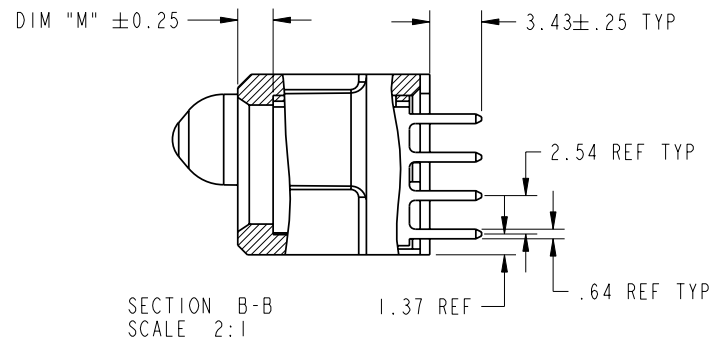
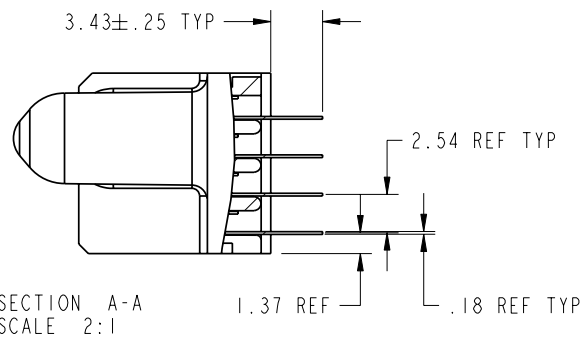
All rights strictly reserved. Reproduction or issue to third parties in any form whatever is not permitted without written authority from the proprietor. Property of FCI. Copyright FCI.




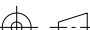

PRODUCT NUMBER

51940-189--

NOTE ③



SECTION C-C  
SCALE 2:1

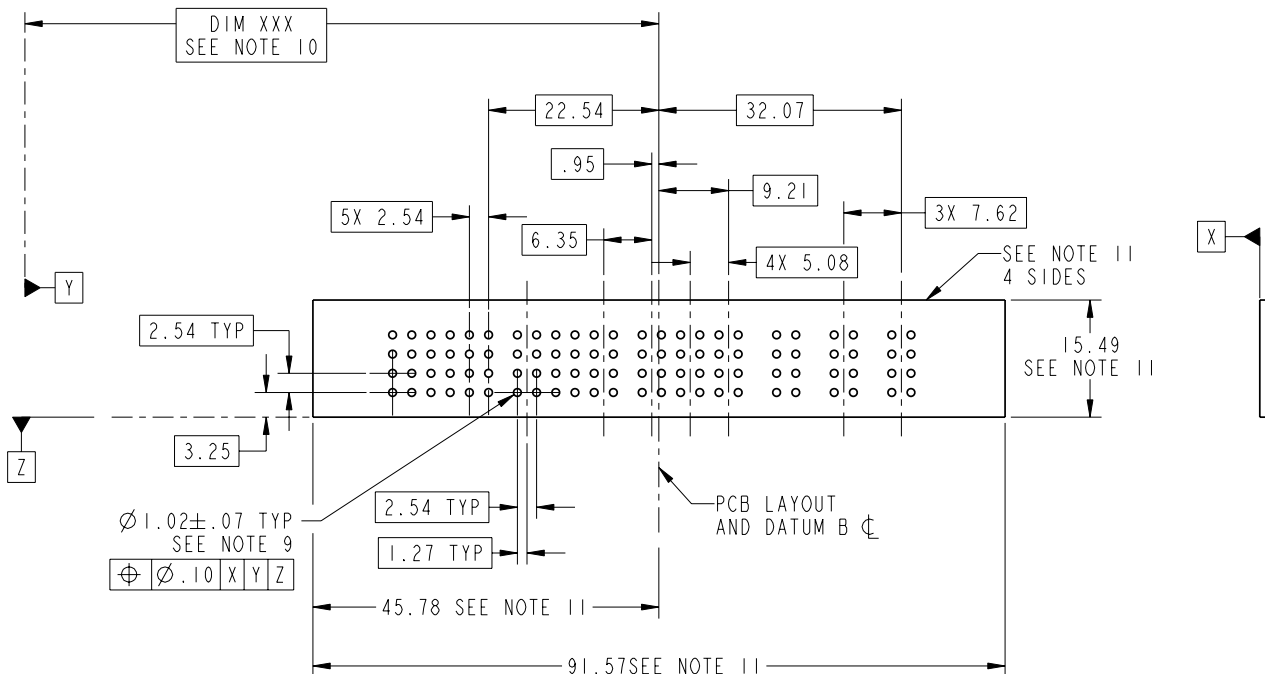
mat'l code				SEE NOTE 2				tolerances unless otherwise specified				CUSTOMER				 www.fciconnect.com			
lfr	ecn no.	dr	date	linear	0.X ± 0.3				projection 	title 9P + 24S VERTICAL STB RECEPT									
A					0.XX ± 0.10														
					angles	0.XXX ± 0.050													
				0° ± 2°															
				dr		Julia Wong	05/11/06		MM 	product family				PwrBlade				code	
				enrg	Sally Luo	05/11/06		size		dwg no				213					
				chr	Beer Fu	05/11/06		scale		A				51940-189				sheet	
				appd	Joseph Hsia	05/11/06		1:1										2 of 4	
sheet index		revision sheet																	

Tous droits strictement reserves. Reproduction ou communication a des tiers interdite sous quelque forme que ce soit sans autorisation écrite du propriétaire. Propriété de c FCI. Droits de reproduction FCI.



All rights strictly reserved. Reproduction or issue to third parties in any form whatever is not permitted without written authority from the proprietor. Property of FCI. Copyright FCI.

PRODUCT NUMBER  
51940-189--  
NOTE ③



mat'l code				tolerances unless otherwise specified		CUSTOMER		FCI	
SEE NOTE 2						COPY		www.fciconnect.com	
lir	ecn no.	dr	date	linear	0.X ± 0.3	projection	MM	title 9P + 24S VERTICAL STB RECEPT	
A					0.XX ± 0.10				
					0.XXX ± 0.050				
				angles	0° ± 2°	scale 1:1	A	product family PwrBlade	
				dr	Julia Wong 05/11/06			size	code
				enr	Sally Luo 05/11/06			dwg no	213
				chr	Beer Fu 05/11/06			51940-189	sheet
				appd	Joseph Hsia 05/11/06				3 of 4
sheet index	revision sheet								

Pro/E

PDM: Rev: A

STAT: US: Released

Printed: Dec 20, 2010



1 | 2

3 |

4

PRODUCT NUMBER

51940-189--  
NOTE ③

NOTES:

1. DIMENSIONS AND TOLERANCES ARE IN ACCORDANCE WITH  
ASME Y14.5M, 1994 UNLESS OTHERWISE SPECIFIED.

CONNECTOR NOTES:

② HOUSING MATERIAL: UL 94 V-0 GLASS FILLED  
HIGH-TEMP THERMOPLASTIC  
POWER CONTACT MATERIAL: COPPER ALLOY  
SIGNAL PIN MATERIAL: COPPER ALLOY

3. PLATING SPEC.  
51940-189, 51940-189LF PLATING SPEC. WAS SHOWN IN THE PRINT OF 10064183.

④ MANUFACTURER'S NAME, P/N, AND DATE CODE TO APPEAR ON  
THIS SURFACE.

5. PRODUCT SPECIFICATION GS-12-149.  
APPLICATION SPECIFICATION BUS-20-067.

6. PACKAGED IN TRAYS.

PCB NOTES:


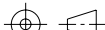

7. ALL HOLE DIAMETERS ARE FINISHED HOLE SIZE.

⑧ MOUNTING HOLES, WHERE APPLICABLE, ARE UNPLATED.

⑨  $\varnothing 1.151 \pm 0.025$  DRILLED HOLES PLATED WITH  
0.008 MIN SnPb OVER 0.03  
TO 0.08 Cu PLATING TO ACHIEVE  
 $\varnothing 1.02 \pm .07$  HOLE.

⑩ "DIM XXX" TO BE DETERMINED BY THE CUSTOMER.

⑪ CONNECTOR KEEP-OUT ZONE.

mat'l code				SEE NOTE 2				tolerances unless otherwise specified				CUSTOMER								www.fciconnect.com							
lfr		ecn no.		dr		date		linear		0.X $\pm 0.3$				COPY				title 9P + 24S VERTICAL STB RECEPT									
A										0.XX $\pm 0.10$				projection													
										0.XXX $\pm 0.050$																	
								angles		0° $\pm 2^\circ$								product family				PwrBlade				code	
								dr		Julia Wong 05/11/06								size				dwg no				213	
								enrg		Sally Luo 05/11/06								scale				A				51940-189	
								chr		Beer Fu 05/11/06				1:1												4 of 4	
								appd		Joseph Hsia 05/11/06																	
sheet index		revision sheet																									

A

A

B

B

1 | 2

Pro/E

PDM: Rev: A

STAT US: Released

Printed: Dec 20, 2010

# Mouser Electronics

Authorized Distributor

Click to View Pricing, Inventory, Delivery & Lifecycle Information:

[FCI / Amphenol:](#)

[51940-189](#) [51940-189LF](#)