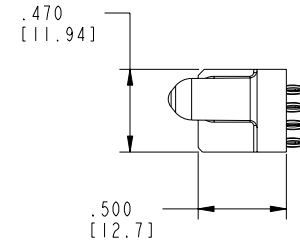
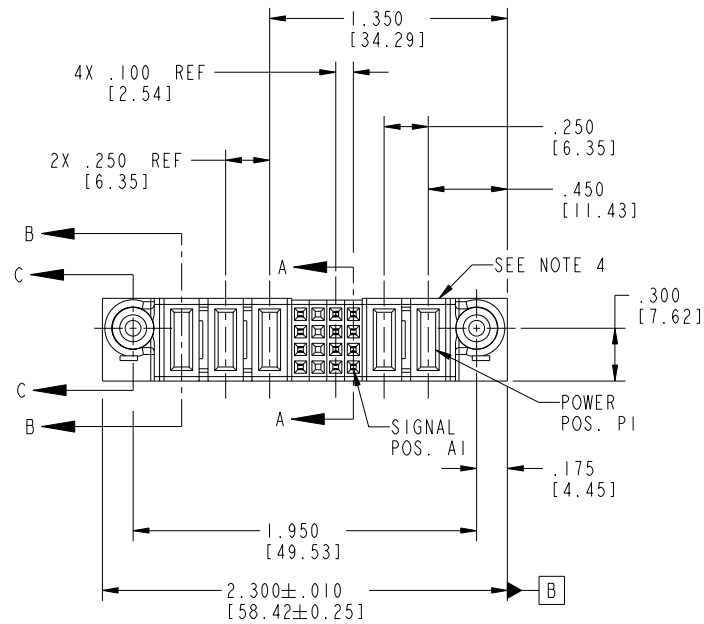


Tous droits strictement réservés. Reproduction ou communication à des tiers interdite sous quelque forme que ce soit sans autorisation écrite du propriétaire. Propriété de FCI. Droits de reproduction FCI.

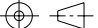

**FCI**

All rights strictly reserved. Reproduction or issue to third parties in any form whatever is not permitted without written authority from the proprietor. Property of FCI. Copyright FCI.

PRODUCT NO.	ROWS	POWER			SIGNAL			POWER		
		E2	P5	P4	4	3	P3	P2	P1	E1
51750-071-- NOTE 3	D C B A		PC	PC	PC	F	F	F	PF	PF



CODE	DIM "M" MATING LENGTH	CONTACT TYPE
PC	.042 [1.07]	POWER
PF	.092 [2.34]	POWER
F	N/A [N/A]	SIGNAL
X	OMITTED	OMITTED

mat'l code				SEE NOTE 2		tolerances unless otherwise specified		CUSTOMER		<div><div>A</div><div>FCI</div><div>www.fciconnect.com</div></div>	
ltr	ecn no.	dr	date	linear	.XX±.01/0.X±0.3		projection 	COPY	title		
A	DG05-0378	CS	09/10/05		.XXX±.005/0.XX±0.13				2P + 16S + 3P		
					.XXX±.0020/0.XXX±0.051				VERTICAL PRESS-FIT RECEPT		
				angles	0°±2°			INCH/MM	product family		code
				dr	CS	09/10/05			PwrBlade		213
				enrg	STEVEN WANG	09/10/05			size dwg no		
				chr	VICTOR LIN	09/10/05			A 51750-071		
				appd	JOSEPH HSIA	09/10/05	scale	1:1	1 of 4		
sheet index	revision	A	A	A	A						
sheet	sheet	1	2	3	4						

Pro/E

cage code 22526

PDM: Rev:A

STATUS: Released

Printed: Dec 20, 2010

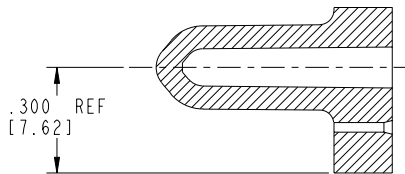
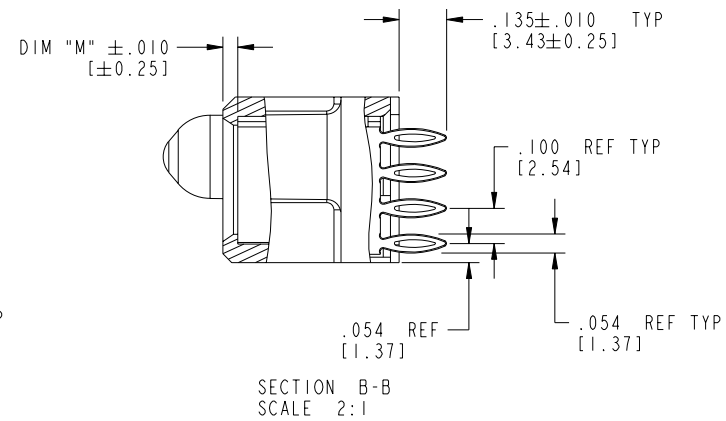
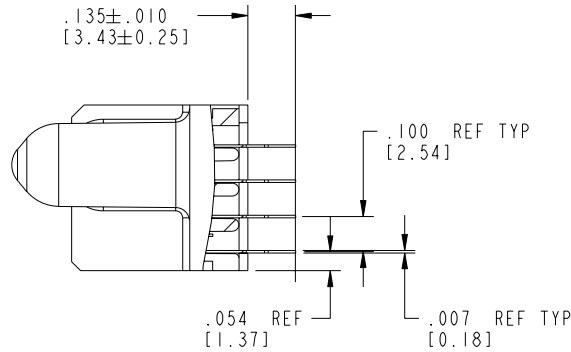
Tous droits strictement reserves. Reproduction ou communication a des tiers interdite sous quelque forme que ce soit sans autorisation écrite du propriétaire. Propriete de c FCI. Droits de reproduction FCI.

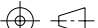
**A**  
**FCI**

All rights strictly reserved. Reproduction or issue to third parties in any form whatever is not permitted without written authority from the proprietor. Property of FCI. Copyright FCI.

PRODUCT NUMBER

51750-071  
NOTE ③



mat'l code				SEE NOTE 2		tolerances unless otherwise specified		CUSTOMER		<div><div>A</div><div>FCI</div><div>www.fciconnect.com</div></div>	
ltr	ecn no.	dr	date	linear	.XX±.01/0.X±0.3		COPY		title 2P + 16S + 3P VERTICAL PRESS-FIT RECEPT		
A					.XXX±.005/0.XX±0.13		projection				
					.XXXX±.0020/0.XXX±0.051						
					angles 0°±2°		INCH/MM				
				dr	CS	09/10/05	scale		product family		code
				enrg	STEVEN WANG	09/10/05	1:1		PwrBlade		213
				chr	VICTOR LIN	09/10/05			size		sheet
				appd	JOSEPH HSIA	09/10/05			dwg no		2 of 4
sheet index		revision sheet									

cage code 22526

PDM: Rev:A

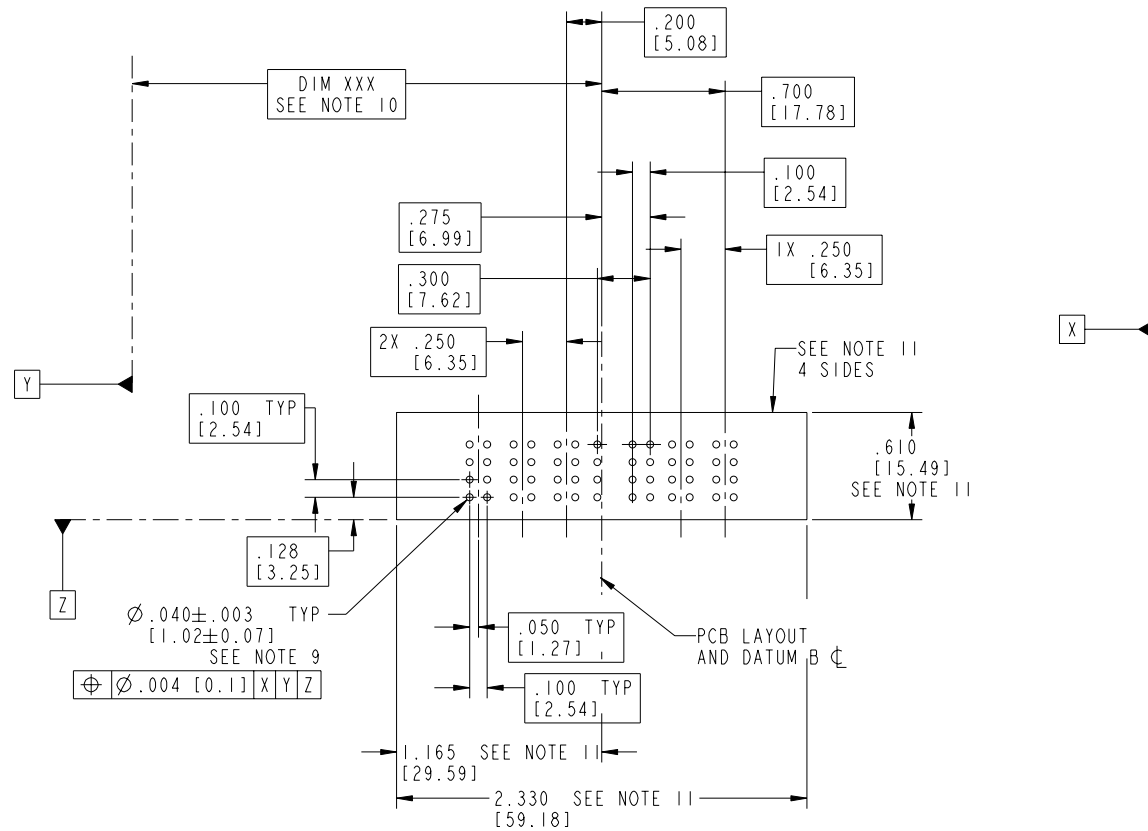
STATUS:Released


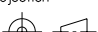

Printed: Dec 20, 2010

All rights strictly reserved. Reproduction or issue to third parties in any form whatever is not permitted without written authority from the proprietor.  
Property of FCI. Copyright FCI.

**AFI**

51750-071--  
NOTE (3)



mat'l code				SEE NOTE 2		tolerances unless otherwise specified		CUSTOMER		<div> www.fciconnect.com</div>			
lfr	ecn no.	dr	date	linear	$.XX \pm .01/0.X \pm 0.3$		COPY		<div></div>	title			
A					$.XXX \pm .005/0.XX \pm 0.13$		projection			2P + 16S + 3P			
					$.XXX \pm .0020/0.XX \pm 0.051$					VERTICAL PRESS-FIT RECEPTOR			
					$0^\circ \pm 2^\circ$								
				angles	$0^\circ \pm 2^\circ$		INCH/MM		<div></div>	product family			
				dr	CS	09/10/05	PwrBlade			code			
				engr	STEVEN WANG	09/10/05	size			dwg no			
				chr	VICTOR LIN	09/10/05	scale			1:1			
				appd	JOSEPH HSIA	09/10/05			A		51750-071		
sheet index		revision sheet											
Pro/E				3				cage code				22526	
												4	

All rights strictly reserved. Reproduction or issue to third parties in any form whatever is not permitted without written authority from the proprietor. Property of FCI. Copyright FCI.

AFCI

4

51750-071--  
NOTE (3)

1. DIMENSIONS AND TOLERANCES ARE IN ACCORDANCE WITH  
ASME Y14.5M, 1994 UNLESS OTHERWISE SPECIFIED.

② HOUSING MATERIAL: UL 94 V-0 GLASS FILLED  
HIGH-TEMP THERMOPLASTIC  
POWER CONTACT MATERIAL: COPPER ALLOY  
SIGNAL PIN MATERIAL: COPPER ALLOY

51750-071 Singal Pin:30u"/0.76um Au OVER 50u"/1.27um Ni ON CONTACT AREA.  
AND 100u"/2.54um SnPb PLATING OVER 50u"/1.27um Ni ON THE TERMINATION SECTION.  
Power Pin:30u"/0.76um Au OVER 50u"/1.27um Ni ON THE CONTACT AREA,  
AND 100u"/2.54um SnPb PLATING OVER 50u"/1.27um Ni ON THE TERMINATION SECTION.

51750-071LF Singal Pin: 30u"/0.76um Au OVER 50u"/1.27um Ni ON CONTACT AREA.  
AND 78u"/2.00um Sn PLATING OVER 50u"/1.27um Ni ON THE TERMINATION SECTION.  
Power Pin: 30u"/0.76um Au OVER 50u"/1.27um Ni ON THE CONTACT AREA,  
AND 78u"/2.00um Sn PLATING OVER 50u"/1.27um Ni ON THE TERMINATION SECTION.

PART NUMBER 51750-071LF MEETS EUROPEAN UNION DIRECTIVE AND OTHER COUNTRY REGULATIONS AS DESCRIBED IN GS-22-008.

THE HOUSING WILL WITHSTAND EXPOSURE TO 260° PEAK TEMPERATURE FOR 10 SECONDS IN A WAVE SOLDER APPLICATION WITH A CIRCUIT BOARD

5. PRODUCT SPECIFICATION GS-12-149.  
APPLICATION SPECIFICATION BUS-20-067.

## PCB NOTES:

7. ALL HOLE DIAMETERS ARE FINISHED HOLE SIZE.

(8) MOUNTING HOLES, WHERE APPLICABLE, ARE UNPLATED.

9)  $\varnothing .0453 \pm .0010$  [1.151  $\pm$  0.025] DRILLED HOLES PLATED WITH  
 $.0003$  [0.008] MIN SnPb OVER  $.001$  [0.03]  
 TO  $.003$  [0.08] Cu PLATING TO ACHIEVE  
 $\varnothing .040 \pm .003$  [1.02  $\pm$  .07] HOLE.

(10) "DIM XXX" TO BE DETERMINED BY THE CUSTOMER.

(11) CONNECTOR KEEP-OUT ZONE.

mat'l code				SEE NOTE 2				tolerances unless otherwise specified				CUSTOMER				<div><div><div>A</div><div>FCI</div></div><div>www.fciconnect.com</div></div>											
ltr		ecn no.		dr		date		linear		.XX±.01/0.X±0.3		projection		<div><div><div><div><div></div><div></div></div><div></div></div><div>0°±2°</div></div><div>INCH/MM</div><div>scale</div><div>1:1</div></div>													
A										.XXX±.005/0.XX±0.13								.XXX±.0020/0.XXX±0.051									
								angles		0°±2°				title													
								dr		CS		09/10/05		2P + 16S + 3P													
								enrg		STEVEN WANG		09/10/05		VERTICAL PRESS-FIT RECEPTACLE													
								chr		VICTOR LIN		09/10/05		product family													
								appt		JOSEPH HSIA		09/10/05		PwrBlade													
														size		dwg no		code									
														A		51750-071		213									
sheet index		revision																sheet									
		sheet																4 of 1									
Pro/E								3								cage code								22526		4	

**PDM: Rev:A**

STATUS: **Released**

Printed: Dec 20, 2010

# Mouser Electronics

Authorized Distributor

Click to View Pricing, Inventory, Delivery & Lifecycle Information:

[FCI / Amphenol:](#)

[51750-071](#) [51750-071LF](#)