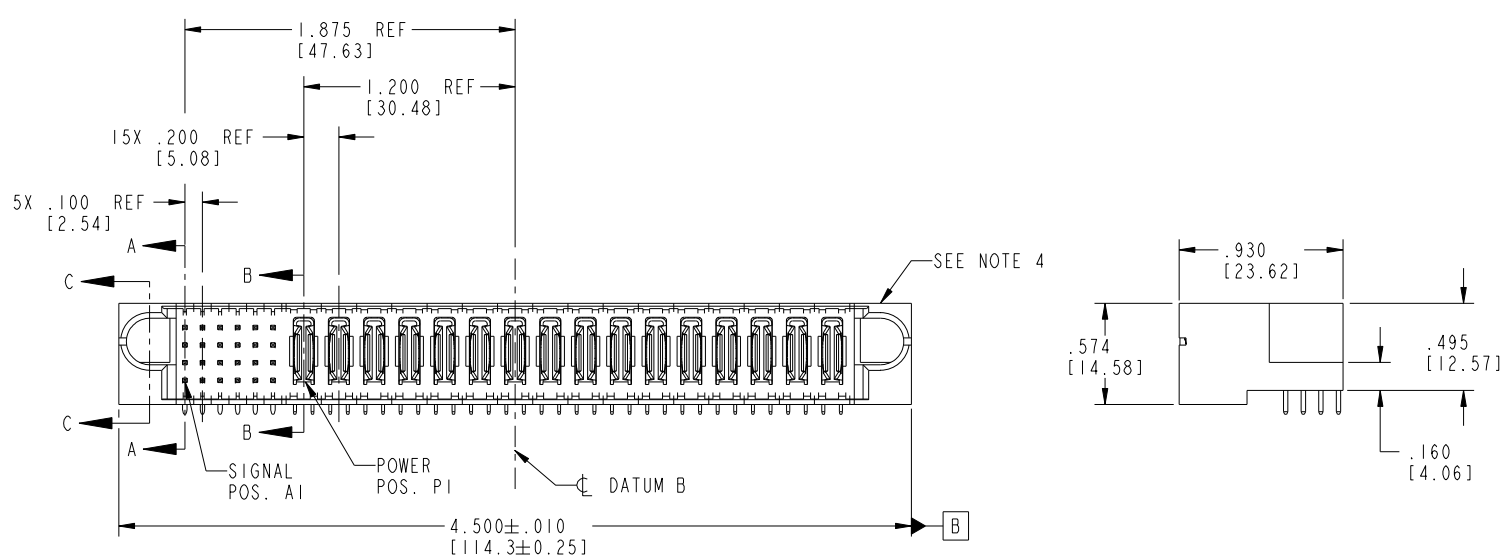


Tous droits strictement réservés. Reproduction ou communication à des tiers interdite sous quelque forme que ce soit sans autorisation écrite du propriétaire. Propriété de c.FCI. Droits de reproduction FCI.



All rights strictly reserved. Reproduction or issue to third parties in any form whatever is not permitted without written authority from the proprietor. Property of FCI. Copyright FCI.

PRODUCT NO. 51939-102... NOTE: 3	ROWS D C B A	SIGNAL				POWER											E2								
		E1	1	2	3	4	5	6	P1	P2	P3	P4	P5	P6	P7	P8		P9	P10	P11	P12	P13	P14	P15	P16
			UUUUUUU	UUUUUUU	UUUUUUU	UUUUUUU	UUUUUUU	PA	PA	PA	PA	PA	PA	PA	PA	PA	PA	PA	PA	PA	PA	PA	PA	PA	



CODE	DIM "M" MATING LENGTH	CONTACT TYPE
R	.270 [6.86]	SIGNAL
S	.270 [6.86]	SIGNAL
T	.270 [6.86]	SIGNAL
U	.270 [6.86]	SIGNAL
PA	N/A [N/A]	POWER

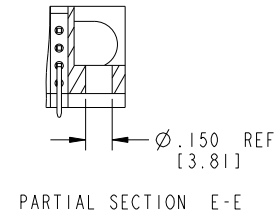
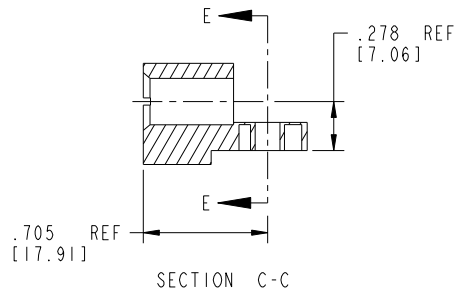
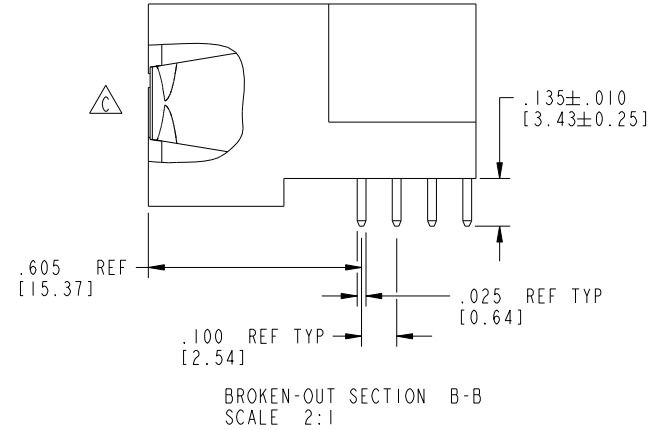
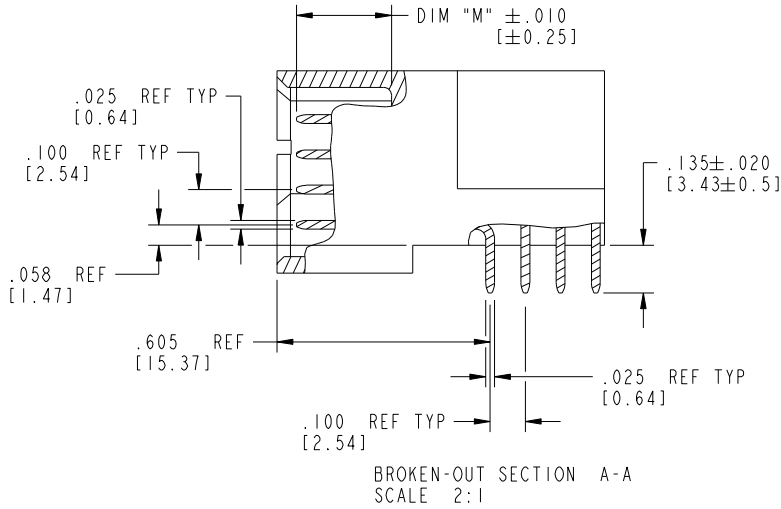
mat'l code				SEE NOTE 2		tolerances unless otherwise specified		CUSTOMER		FCI	
ltr	ecn no.	dr	date	linear	.XX±.01/0.X±0.3	projection	COPY	www.fciconnect.com			
A	V03-1370	TAB	01/07/04		.XXX±.005/0.XX±0.13		title	24S + 16P			
B	DG06-0014	JMG	01/16/06		.XXX±.0020/0.XXX±0.051		RIGHT ANGLE SOLDER HEADER		product family		
C	DG09-0003	WD	01/18/09	angles	0°±2°	INCH/MM	scale	PwrBlade	code	213	
				dr	T. BRUNGARD 01/07/04	1:1	A	51939-102	sheet	1 of 4	
				enrg	M. GRAY 01/07/04						
				chr	M. GRAY 01/07/04						
				appd	M. GRAY 01/07/04						
sheet index	revision sheet	C	C	C	C						
		1	2	3	4						

Pro/E cage code 22526

Tous droits strictement réservés. Reproduction ou communication à des tiers interdite sous quelque forme que ce soit sans autorisation écrite du propriétaire. Propriété de c.FCI. Droits de reproduction FCI.

All rights strictly reserved. Reproduction or issue to third parties in any form whatsoever is not permitted without written authority from the proprietor. Property of FCI. Copyright FCI.

PRODUCT NUMBER  
51939-102--  
NOTE: 3



mat'l code		SEE NOTE 2		tolerances unless otherwise specified		CUSTOMER		FCI		www.fciconnect.com	
ltr	ecn no.	dr	date	linear	.XX±.01/0.X±0.3	COPY		projection		title	
C					.XXX±.005/0.XX±0.13	INCH/MM		RIGHT ANGLE		24S + 16P	
				angles	.XXX±.0020/0.XXX±0.051	1:1		product family		PwrBlade	
				dr	0°±2°	scale		size		code	
				enr	T. BRUNGARD 01/07/04	A		dwg no		213	
				chr	M. GRAY 01/07/04	A		51939-102		sheet	
				appd	M. GRAY 01/07/04	A		2 of 4		B	
sheet index	revision sheet										

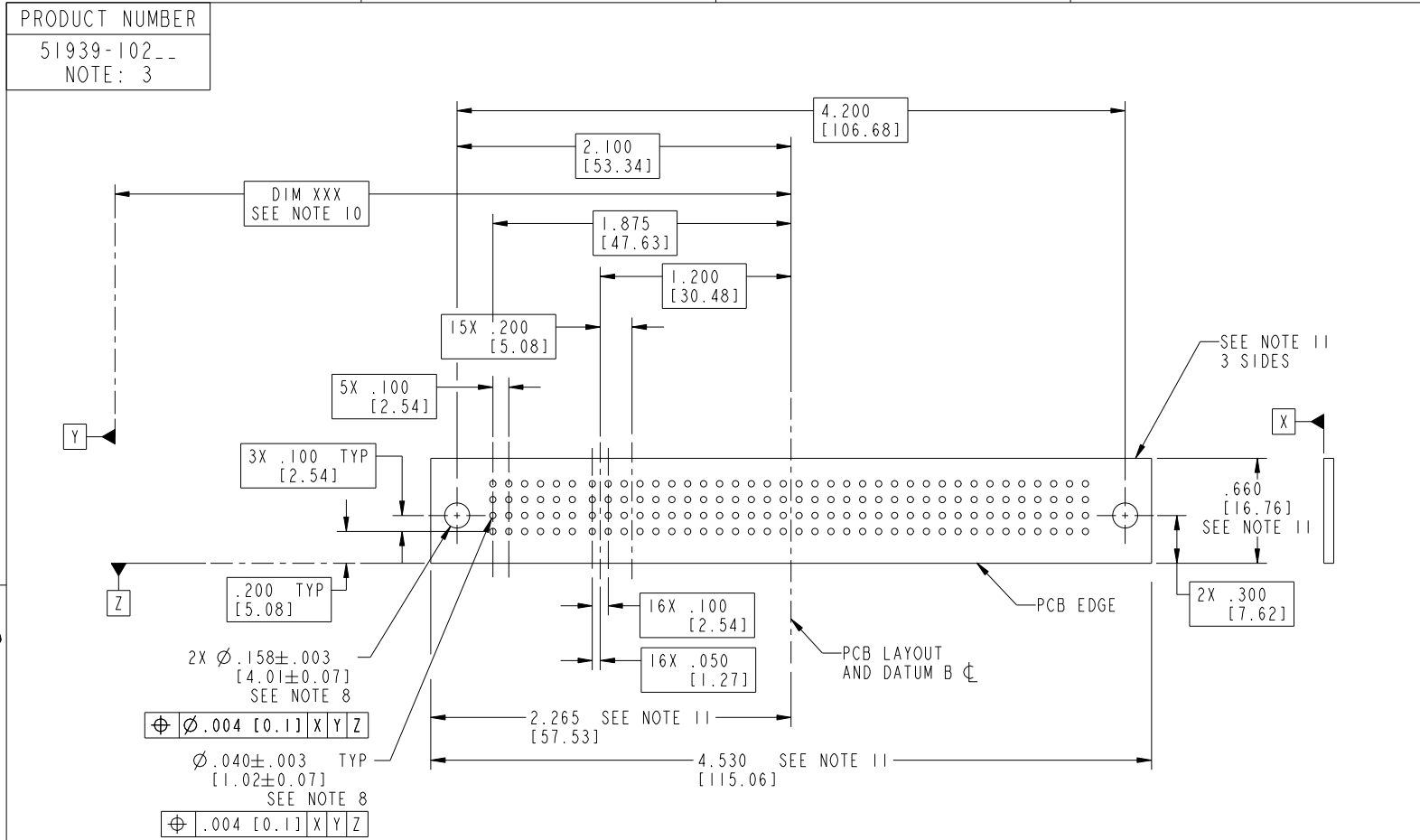
Pro/E

cage code 22526

Tous droits strictement reserves. Reproduction ou communication a des tiers interdite sous quelque forme que ce soit sans autorisation ecrite du proprietaire. Propriete de c FCI. Droits de reproduction FCI.



All rights strictly reserved. Reproduction or issue to third parties in any form whatever is not permitted without written authority from the proprietor. Property of FCI. Copyright FCI.



RECOMMENDED PCB LAYOUT

mat'l code		SEE NOTE 2		tolerances unless otherwise specified		CUSTOMER		 www.fciconnect.com	
ltr	ecn no.	dr	date	linear	.XX±.01/0.X±0.3	COPY		title	
C					.XXX±.005/0.XX±0.13	projection		24S + 16P	
				angles	.XXX±.0020/0.XXX±0.051			RIGHT ANGLE SOLDER HEADER	
				dr	0°+2°	INCH/MM		product family	
				enr	T. BRUNGARD 01/07/04	scale		PwrBlade	
				chr	M. GRAY 01/07/04	1:1		code	
				appd	M. GRAY 01/07/04	A		213	
sheet index	revision sheet					size		dwg no	
						A		51939-102	
						sheet		3 of 4	

cage code 22526

Tous droits strictement reserves. Reproduction ou communication a des tiers interdite sous quelque forme que ce soit sans autorisation écrite du propriétaire. Propriete de c FCI. Droits de reproduction FCI.



All rights strictly reserved. Reproduction or issue to third parties in any form whatever is not permitted without written authority from the proprietor. Property of FCI. Copyright FCI.

PRODUCT NUMBER
51939-102__
NOTE: 3

NOTES:

1. DIMENSIONS AND TOLERANCES ARE IN ACCORDANCE WITH ASME Y14.5M, 1994 UNLESS OTHERWISE SPECIFIED.

CONNECTOR NOTES:

- 2. HOUSING MATERIAL: UL 94 V-0 GLASS FILLED HIGH-TEMP THERMOPLASTIC  
POWER CONTACT MATERIAL: COPPER ALLOY  
SIGNAL PIN MATERIAL: COPPER ALLOY

3. SEE ITEM 1 & 2 IN PRINT 10064183 FOR PLATING SPEC OF 51939-102 AND 51939-102LF RESPECTIVELY.

- 4. MANUFACTURER'S NAME, P/N, AND DATE CODE TO APPEAR ON THIS SURFACE.

5. PRODUCT SPECIFICATION GS-12-149.  
APPLICATION SPECIFICATION BUS-20-067.

6. PACKAGED IN TRAYS.

PCB NOTES:

7. ALL HOLE DIAMETERS ARE FINISHED HOLE SIZE.

- 8. MOUNTING HOLES, WHERE APPLICABLE, ARE UNPLATED.

- 9.  $\varnothing .0453 \pm .0010$  [1.151  $\pm$  0.025] DRILLED HOLES PLATED WITH  
.0003 [0.008] MIN SnPb OVER .001 [0.03]  
TO .003 [0.08] Cu PLATING TO ACHIEVE  
 $\varnothing .040 \pm .003$  [1.02  $\pm$  .07] HOLE.

- 10. "DIM XXX" TO BE DETERMINED BY THE CUSTOMER.

- 11. CONNECTOR KEEP-OUT ZONE.

12. A  $\triangle$  SYMBOL WILL BE NEXT TO ANY DIMENSION, VIEW, OR NOTE WHICH HAS BEEN MODIFIED WITH THE CURRENT DRAWING REVISION.

mat'l code		SEE NOTE 2		tolerances unless otherwise specified		CUSTOMER		FCI		www.fciconnect.com	
lfr	ecn no.	dr	date	linear	.XX±.01/0.X±0.3	COPY		projection		title	
C					.XXX±.005/0.XX±0.13					24S + 16P	
				angles	.XXX±.002/0.XXX±0.051					RIGHT ANGLE SOLDER HEADER	
				dr	0°±2°			product family		code	
				enr	T. BRUNGARD 01/07/04	INCH/MM		PwrBlade		213	
				chr	M. GRAY 01/07/04	scale		size		sheet	
				appd	M. GRAY 01/07/04	1:1		A		4 of 4	
sheet index		revision sheet									

cage code 22526