

Tous droits strictement reserves. Reproduction ou communication a des tiers interdite sous quelque forme que ce soit sans autorisation écrite du propriétaire. Propriete de c FCI. Droits de reproduction FCI.

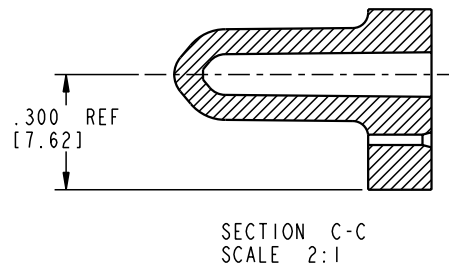
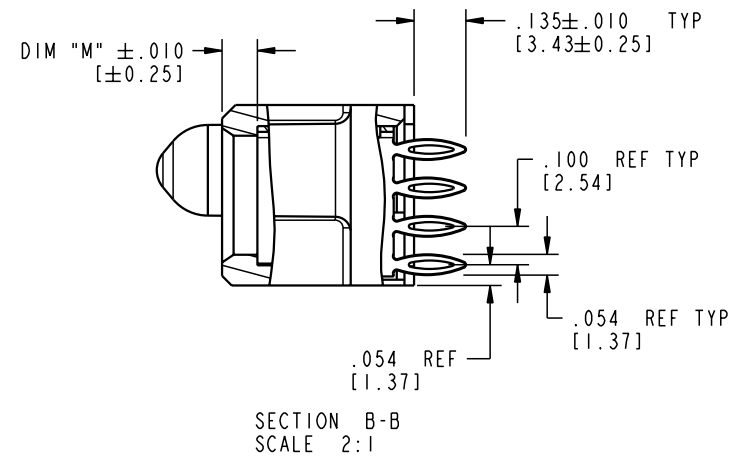
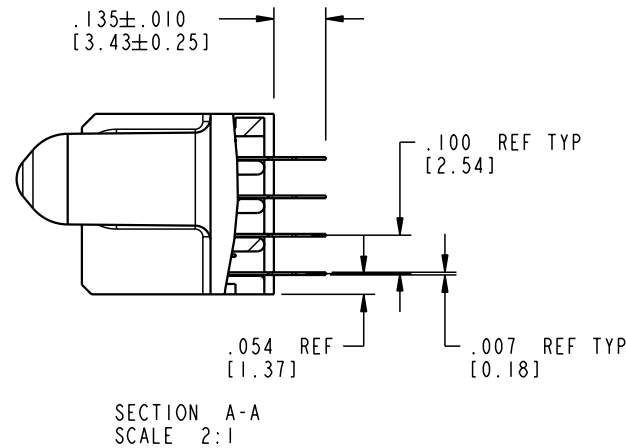
A
FCI

All rights strictly reserved. Reproduction or issue to third parties in any form whatever is not permitted without written authority from the proprietor. Property of FCI. Copyright FCI.

A

B

PRODUCT NUMBER
51752-012



material code				SEE NOTE 2		tolerances unless otherwise specified		CUSTOMER		A FCI		www.fciconnect.com	
ltr	ecr no.	dr	date	linear	.XX±.01/0.X±0.3	projection	COPY	INCH/MM	scale	title	product family	PwrBlade	code
A													
				angles	.XXX±.005/0.XX±0.13	0° ± 2°	T. BRUNGARD 07/23/04	M. GRAY 07/23/04	M. GRAY 07/23/04	M. GRAY 07/23/04	size	dwg no	sheet
				dr	.XXX±.0020/0.XXX±0.051								
				enr									
				chr		1:1	A	51752-012	2 of 4	cage code	22526	4	B
				appd									
				sheet index	revision sheet								

Pro/E

3

cage code 22526

4

PDM: Rev:A

STATUS: Released

Printed: Dec 20, 2010

Tous droits strictement reserves. Reproduction ou communication a des tiers interdite sous quelque forme que ce soit sans autorisation écrite du propriétaire. Propriété de c FCI. Droits de reproduction FCI.

A
FCI

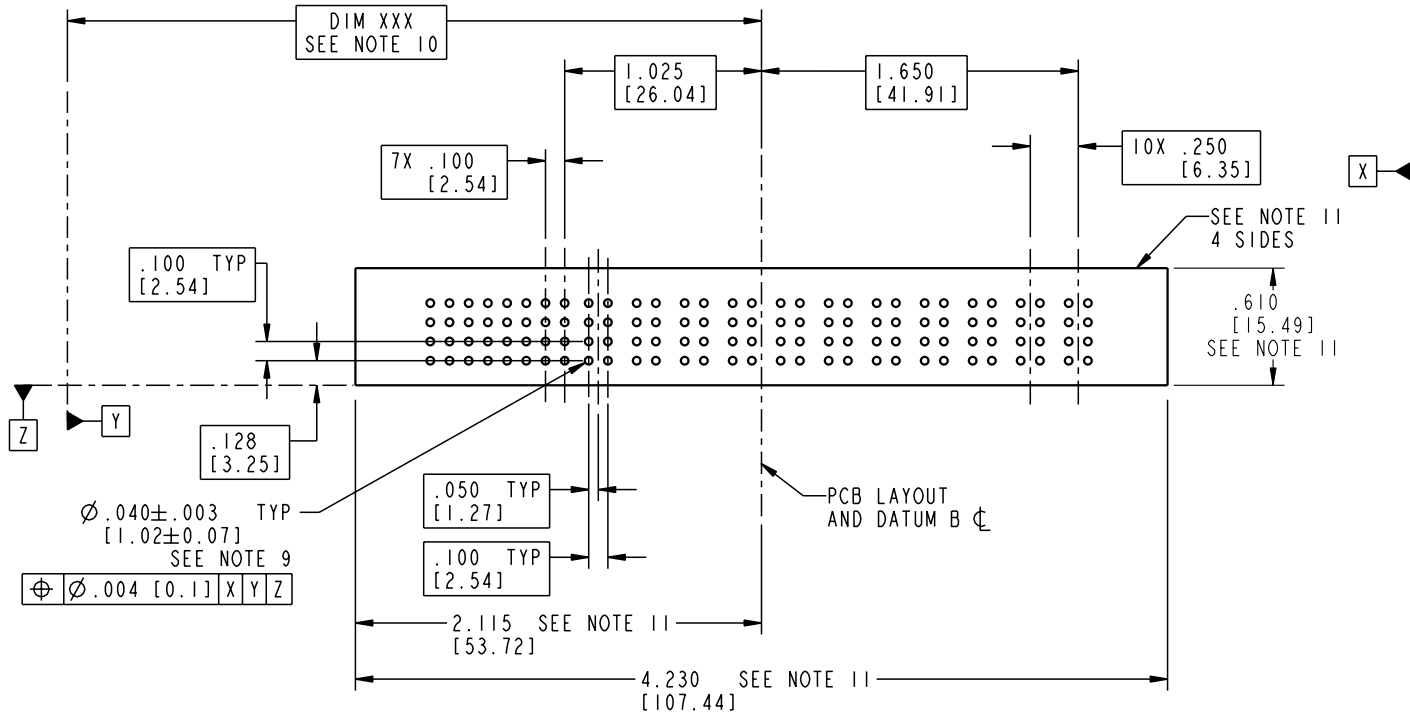
All rights strictly reserved. Reproduction or issue to third parties in any form whatever is not permitted without written authority from the proprietor. Property of FCI. Copyright FCI.

A

FCI

B

PRODUCT NUMBER
51752-012



A

B

mat'l code				SEE NOTE 2		tolerances unless otherwise specified		CUSTOMER		A FCI		www.fciconnect.com	
ltr	ecn no.	dr	date	linear	.XX \pm .01 / 0.X \pm 0.3	projection	COPY	INCH/MM	scale	title	product family	PwrBlade	code
A													
				angles	.XXX \pm .005 / 0.XX \pm 0.13	0° \pm 2°	dr	T. BRUNGARD	07/23/04	size	dwg no	A	51752-012
					.XXXX \pm .0020 / 0.XXX \pm 0.051								
				dr	M. GRAY	07/23/04	enrg	M. GRAY	07/23/04	sheet	3 of 4	cage code	22526
				chr	M. GRAY	07/23/04	appd	M. GRAY	07/23/04				
sheet index	revision	sheet											

Pro/E

3

cage code
22526

4

PDM: Rev:A

STATUS: Released

Printed: Dec 20, 2010

PRODUCT NUMBER
51752-012

NOTES:

1. DIMENSIONS AND TOLERANCES ARE IN ACCORDANCE WITH
ASME Y14.5M, 1994 UNLESS OTHERWISE SPECIFIED.

CONNECTOR NOTES:

2 HOUSING MATERIAL: UL 94 V-0 GLASS FILLED

HIGH-TEMP THERMOPLASTIC

POWER CONTACT MATERIAL: COPPER ALLOY

SIGNAL PIN MATERIAL: COPPER ALLOY

3. PLATING:

SIGNAL PINS: 30u"/0.76um Au OVER 50u"/1.27um Ni

POWER CONTACTS: 50u"/1.27um Ni UNDER ALL
WITH 30u"/0.76um Au ON CONTACT AREA
AND SnPb ON PCB INTERFACE

4 MANUFACTURER'S NAME, P/N, AND DATE CODE TO APPEAR ON
THIS SURFACE.

5. PRODUCT SPECIFICATION GS-12-149.
APPLICATION SPECIFICATION BUS-20-067.

6. PACKAGED IN TRAYS.

PCB NOTES:


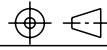
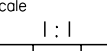
7. ALL HOLE DIAMETERS ARE FINISHED HOLE SIZE.

8 MOUNTING HOLES, WHERE APPLICABLE, ARE UNPLATED.

9 $\varnothing .0453 \pm .0010$ [1.151 \pm 0.025] DRILLED HOLES PLATED WITH
.0003 [0.008] MIN SnPb OVER .001 [0.03]
TO .003 [0.08] Cu PLATING TO ACHIEVE
 $\varnothing .040 \pm .003$ [1.02 \pm .07] HOLE.

10 "DIM XXX" TO BE DETERMINED BY THE CUSTOMER.

11 CONNECTOR KEEP-OUT ZONE.

mat'l code				SEE NOTE 2				tolerances unless otherwise specified				CUSTOMER				 www.fciconnect.com								
ltr	ecn no.	dr	date	linear	.XX \pm .01/0.X \pm 0.3				COPY								title IIP + 32S VERTICAL PRESS-FIT RECEPT							
A					.XXX \pm .005/0.XX \pm 0.13				projection															
					.XXXX \pm .0020/0.XXX \pm 0.051				scale															
				angles	0° \pm 2°				INCH/MM				product family				PwrBlade				code			
				dr	T. BRUNGARD 07/23/04								size				dwg no				sheet			
				enrg	M. GRAY 07/23/04								A				51752-012				213			
				chr	M. GRAY 07/23/04												4 of 4							
				appd	M. GRAY 07/23/04																			
sheet index		revision sheet																						

Mouser Electronics

Authorized Distributor

Click to View Pricing, Inventory, Delivery & Lifecycle Information:

[FCI / Amphenol:](#)

[51752-012](#) [51752-012LF](#)