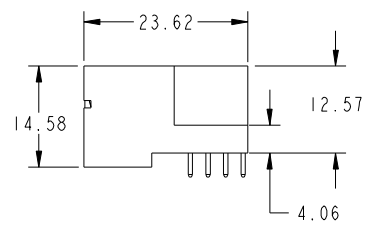
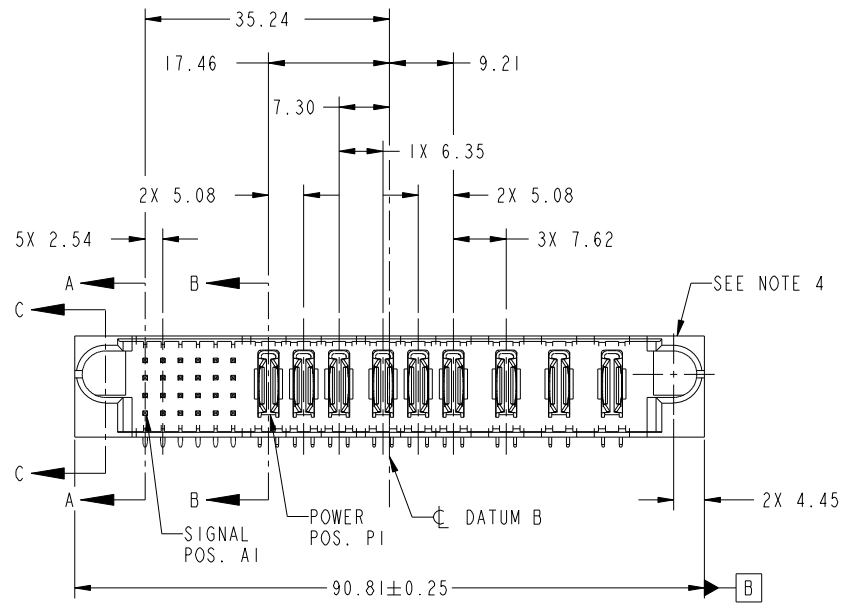


Tous droits strictement reserves. Reproduction ou communication a des tiers interdite sous quelque forme que ce soit sans autorisation écrite du propriétaire. Propriete de c FCI. Droits de reproduction FCI.



All rights strictly reserved. Reproduction or issue to third parties in any form whatever is not permitted without written authority from the proprietor. Property of FCI. Copyright FCI.

PRODUCT NO.	ROWS	SIGNAL					POWER									E2		
		E1	1	2	3	4	5	6	P1	P2	P3	P4	P5	P6	P7		P8	P9
51939-531... NOTE 3	D C B A		U	H	U	U	H		PA	PA	PA	PA	PA	PA	PA	PA	PA	
			T	T	T	T	G											
			S	S	S	S	F											
			R	R	R	R	F											



CODE	DIM "M" MATING LENGTH	CONTACT TYPE
U	[6.86]	SIGNAL
T	[6.86]	SIGNAL
S	[6.86]	SIGNAL
R	[6.86]	SIGNAL
PA	[N/A]	POWER
H	[5.59]	SIGNAL
G	[5.59]	SIGNAL
F	[5.59]	SIGNAL
E	[5.59]	SIGNAL

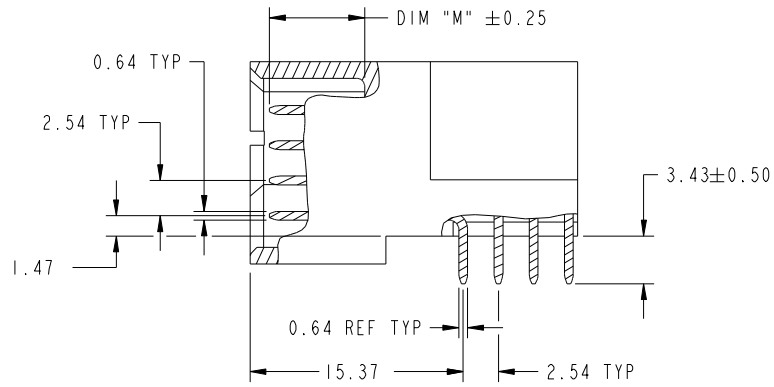
mat'l code				SEE NOTE		tolerances unless otherwise specified		CUSTOMER		 www.fciconnect.com	
ltr	ecn no.	dr	date	linear	0.X ±0.5		COPY		title 24S + 9P RIGHT ANGLE SOLDER HEADER		
A	DG10-0173	HW	05/16/09		0.XX ±0.25		projection				
				angles	0.XXX ±0.1				product family PwrBlade code 213 size dwg no 51939-531 sheet 1 of 4		
					dr	HENRY WANG 04/24/10					
				enr	HENRY WANG 04/24/10		scale		A 1:1		
				chr	PM ZHENG 04/24/10						
				appd	JOSEPH HSIA 04/24/10				cage code 22526		
sheet index	revision sheet	A	A	A	A						
		1	2	3	4						

Tous droits strictement reserves. Reproduction ou communication a des tiers interdite sous quelque forme que ce soit sans autorisation écrite du propriétaire. Propriete de c FCI. Droits de reproduction FCI.

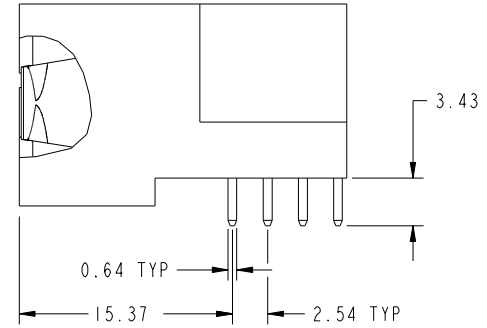
All rights strictly reserved. Reproduction or issue to third parties in any form whatever is not permitted without written authority from the proprietor. Property of FCI. Copyright FCI.



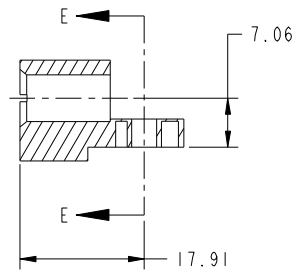
PRODUCT NUMBER  
51939-531\_\_  
NOTE: 3



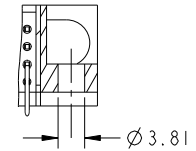
BROKEN-OUT SECTION A-A  
SCALE 2:1



BROKEN-OUT SECTION B-B  
SCALE 2:1



SECTION C-C



PARTIAL SECTION E-E

mat'l code				SEE NOTE		tolerances unless otherwise specified		CUSTOMER		 www.fciconnect.com	
ltr	ecr no.	dr	date	linear	0.X ±0.5		COPY		title 24S + 9P RIGHT ANGLE SOLDER HEADER		
A					0.XX ±0.25		projection				
					angles	0.XXX ±0.1		 MIM		product family PwrBlade code 213	
				dr		HENRY WANG	04/24/10	scale		size dwg no 213	
				enr	HENRY WANG	04/24/10	1:1		sheet 2 of 4		
				chr	PM ZHENG	04/24/10			A 51939-531		
				appd	JOSEPH HSIA	04/24/10					
sheet index		revision sheet								cage code 22526	

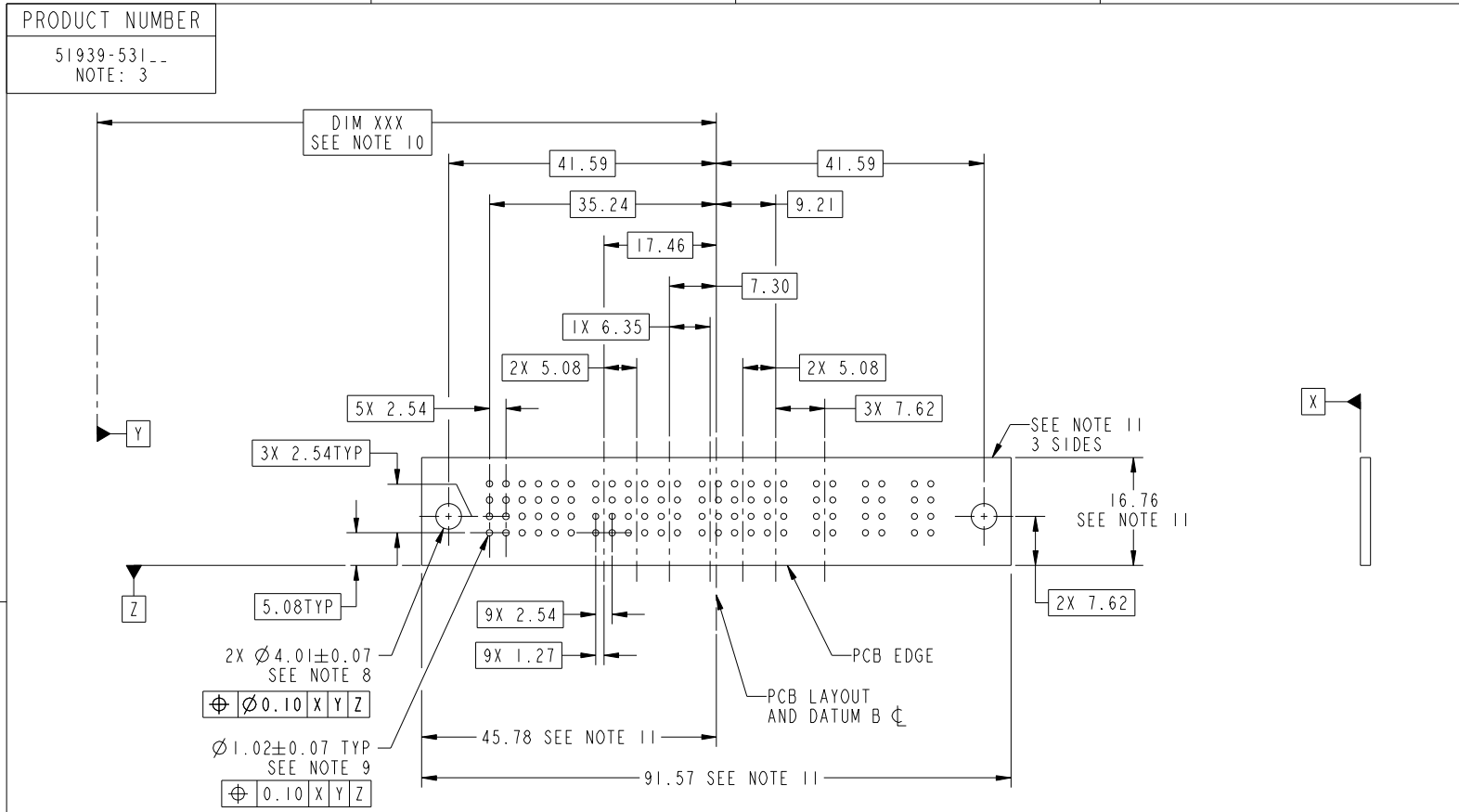
Pro/E

cage code 22526

Tous droits strictement reserves. Reproduction ou communication a des tiers interdite sous quelque forme que ce soit sans autorisation ecrite du proprietaire. Propriete de c FCI. Droits de reproduction FCI.



All rights strictly reserved. Reproduction or issue to third parties in any form whatever is not permitted without written authority from the proprietor. Property of FCI. Copyright FCI.



RECOMMENDED PCB LAYOUT

mat'l code		SEE NOTE		tolerances unless otherwise specified		CUSTOMER		FCI	
ltr	ecn no.	dr	date	linear	0.X ±0.5	COPY		www.fciconnect.com	
A				angles	0.XX ±0.25	projection		title	
				dr	0.XXX ±0.1	MIM		24S + 9P	
				enr	0° ±2°	scale		RIGHT ANGLE SOLDER HEADER	
				chr	HENRY WANG 04/24/10	1:1		product family	
				appd	HENRY WANG 04/24/10	A		PwrBlade	
					PM ZHENG 04/24/10			code	
					JOSEPH HSIA 04/24/10			213	
sheet index	revision sheet							size	
								dwg no	
								51939-531	
								sheet	
								3 of 4	
								cage code	
								22526	

Pro/E

cage code 22526

Tous droits strictement reserves. Reproduction ou communication a des tiers interdite sous quelque forme que ce soit sans autorisation écrite du propriétaire. Propriete de c FCI. Droits de reproduction FCI.



All rights strictly reserved. Reproduction or issue to third parties in any form whatever is not permitted without written authority from the proprietor. Property of FCI. Copyright FCI.

PRODUCT NUMBER  
51939-531--  
NOTE: 3

NOTES:

1. DIMENSIONS AND TOLERANCES ARE IN ACCORDANCE WITH ASME Y14.5M, 1994 UNLESS OTHERWISE SPECIFIED.

CONNECTOR NOTES:

- 2. HOUSING MATERIAL: UL 94 V-0 GLASS FILLED HIGH-TEMP THERMOPLASTIC  
POWER CONTACT MATERIAL: COPPER ALLOY  
SIGNAL PIN MATERIAL: COPPER ALLOY
- 3. SEE ITEM 1 & 2 IN PRINT 10064183 FOR PLATING SPEC OF 51939-531 AND 51939-531LF RESPECTIVELY.
- 4. MANUFACTURER'S NAME, DATE CODE AND OPTIONAL P/N TO APPEAR ON THIS SURFACE. THE P/N CAN BE OMITTED IF THERE IS NOT ENOUGH SPACE ON THIS SURFACE.
- 5. PRODUCT SPECIFICATION GS-12-149.  
APPLICATION SPECIFICATION BUS-20-067.
- 6. PACKAGED IN TRAYS.

PCB NOTES:

- 7. ALL HOLE DIAMETERS ARE FINISHED HOLE SIZE.
- 8. MOUNTING HOLES, WHERE APPLICABLE, ARE UNPLATED.
- 9.  $\varnothing 1.151 \pm 0.025$  DRILLED HOLES PLATED WITH  
0.008 MIN SnPb OR Sn OVER 0.03  
TO 0.08 Cu PLATING TO ACHIEVE  
 $\varnothing 1.02 \pm 0.07$  HOLE.
- 10. "DIM XXX" TO BE DETERMINED BY THE CUSTOMER.
- 11. CONNECTOR KEEP-OUT ZONE.

mat'l code		SEE NOTE		tolerances unless otherwise specified		CUSTOMER		FCI		www.fciconnect.com	
ltr	ecn no.	dr	date	linear	0.X ± 0.5	COPY		 title 24S + 9P RIGHT ANGLE SOLDER HEADER			
A					0.XX ± 0.25	projection					
				angles	0.XXX ± 0.1	 MIM					
				dr	HENRY WANG 04/24/10	product family		PwrBlade	code		
				enr	HENRY WANG 04/24/10	size		dwg no	213		sheet
				chr	PM ZHENG 04/24/10	scale		A	51939-531		
				appd	JOSEPH HSIA 04/24/10	1:1					
sheet index	revision sheet										

cage code 22526

Pro/E

# Mouser Electronics

Authorized Distributor

Click to View Pricing, Inventory, Delivery & Lifecycle Information:

[FCI / Amphenol:](#)

[51939-531LF](#)