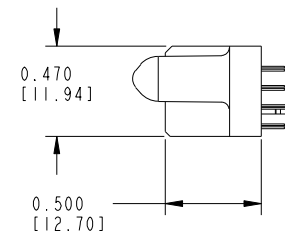
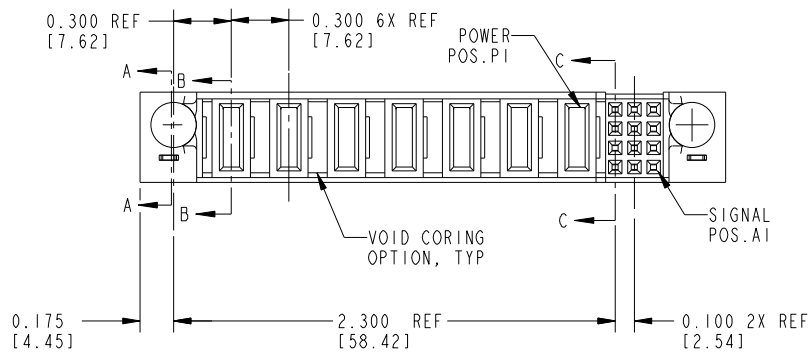
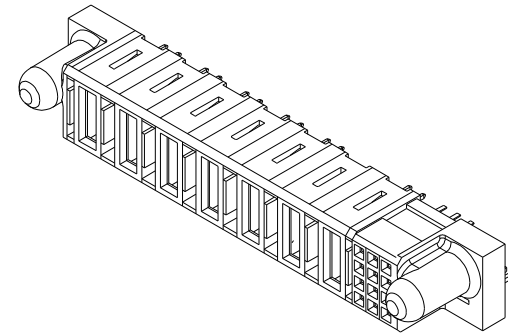
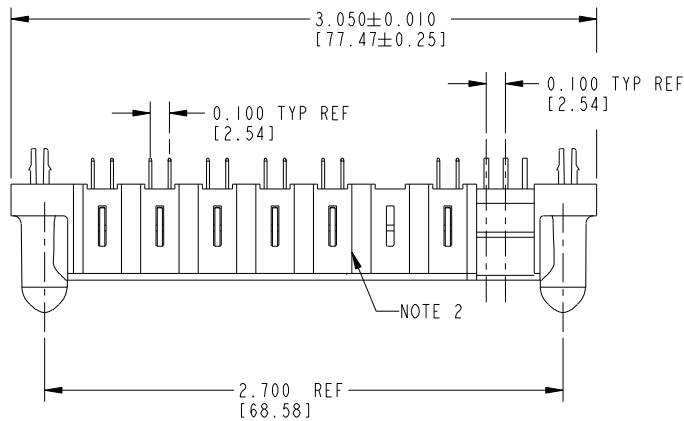


PRODUCT NUMBER

51684-001--

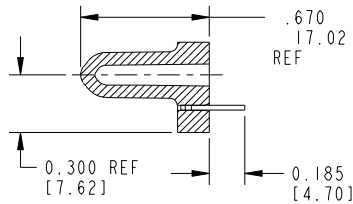
NOTE: (3)



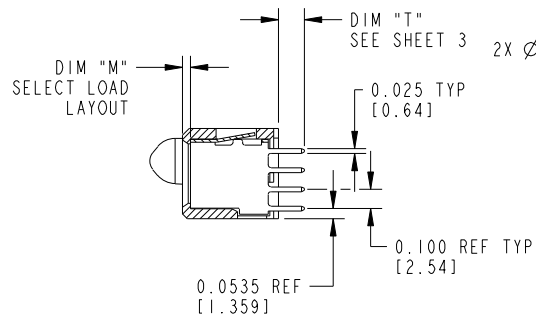
mat'l code				NOTE 1		tolerances unless otherwise specified		CUSTOMER		FCI	
ltr	ecn no.	dr	date					COPY		www.fciconnect.com	
A	V02393	EKK	10-18-00	linear		.xx±.01/0.X±0.3		projection		title	
B	DG05-0171	GuoJM	06/19/05			.xxx±.005/0.XX±0.13				12S + 7ACP	
C	DG06-0375	JULIA	09/06/06	angles		.xxx±.0020/.xxx±.051				VERTICAL SOLDER RECEPTACLE	
						0°±2°				product family	
				dr	S. ROYER	12/13/99		INCH/MM		PWRBLADE	
				enr	J. BROWN	12/13/99		scale		size	
				chr	J. BROWN	12/13/99		1:1		dwg no	
				appd	J. BROWN	01/18/00				A	
sheet index	revision sheet	C	C	1	2	3				51684	
										code	
										213	
										sheet	
										1 of 3	



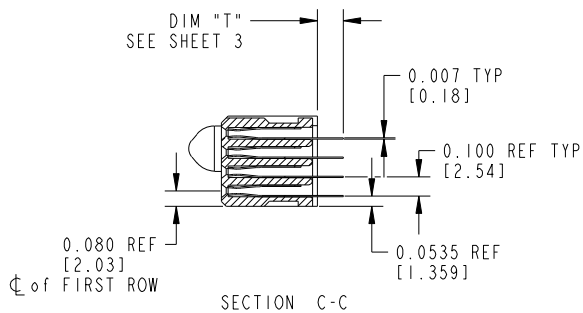
PRODUCT NUMBER
51684-001--
NOTE: (3)



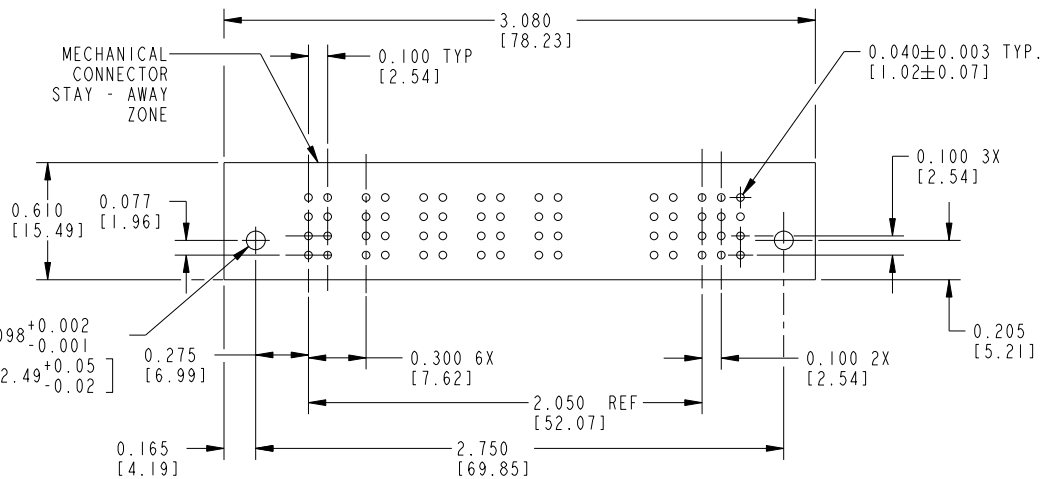
SECTION A-A



SECTION B-B



SECTION C-C



RECOMMENDED PCB LAYOUT

mat'l code				tolerances unless otherwise specified		CUSTOMER	
ltr	ecn no.	dr	date	linear	angular	COPY	
C				.XX±.01/0.X±0.3	0°±2°	projection	www.fciconnect.com
				.XXX±.005/0.XX±0.13			title
				.XXXX±.0020/.XXX±.051			12S + 7ACP VERTICAL SOLDER RECEPTACLE
				dr S. ROYER 12/13/99		INCH/MM	product family
				enrg J. BROWN 12/13/99		scale	PWRBLADE
				chr J. BROWN 12/13/99		1:1	code
				appd J. BROWN 01/18/00			213
sheet index	revision sheet						sheet
							2



size dwg no
51684

1											2	3											4
PRODUCT No.	ROWS	POWER										ITEM NO.	QTY	DIM "M" MATING LENGTH ±.010 [0.25]	DIM "T" TAIL LENGTH ±.010 [0.25]	CONTACT TYPE							
		E2	P7	P6	P5	P4	P3	P2	P1	3	2						1	E1					
51684-001 NOTE: ③	D		PA	PA	PA	PA	PA	X	PA		E	E	E	E	HA	2	N/A	[N/A]	N/A	[N/A]	HOLD-DOWN		
	C														PA	6	0.042	[1.07]	0.135	[3.43]	POWER		
	A														E	12	N/A	[N/A]	0.135	[3.43]	SIGNAL		

CONNECTORS - NOTES:

- HOUSING MATERIAL: GLASS FILLED HIGH TEMP. THERMOPLASTIC, FLAME RETARDANT PER UL94 V-0.
SIGNAL PIN MATERIAL: COPPER ALLOY
POWER CONTACT MATERIAL: COPPER ALLOY
- "MANUFACTURER'S NAME" , P/N, AND DATE CODE TO APPEAR ON THIS SURFACE
- 51684-001;51684-001LF;51684-001GLF PLATING SPEC. SEE PRINT:10064183

PCB - NOTES:

- ALL DIMENSIONS ARE BASIC UNLESS OTHERWISE SPECIFIED.
- ALL THROUGH HOLES ARE LOCATED WITH A TRUE POSITION OF .004
- ALL HOLE DIAMETERS ARE FINISHED HOLE SIZE
- Ø0.098 THROUGH HOLES ARE UNPLATED
- Ø.0453/1.151 DRILLED HOLES PLATED WITH .0003/.007 MIN SnPb or Sn OVER .001/1.03 to .003/.08 Cu PLATING TO ACHIEVE A .040±.003/1.02±.08 HOLE

mat'l code				tolerances unless otherwise specified				CUSTOMER		www.fciconnect.com			
ltr	ecn no.	dr	date	linear	.XX±.01/0.X±0.3			COPY			title		
C					.XXX±.005/0.XX±0.13			projection			12S + 7ACP		
					.XXX±.0020/.XXX±.051			INCH/MM			VERTICAL SOLDER RECEPTACLE		
				angles	0°±2°					product family		code	
				dr	S. ROYER 12/13/99			scale		PWRBLADE		213	
				enrg	J. BROWN 12/13/99			1:1		size		sheet	
				chr	J. BROWN 12/13/99					A		3	
				appd	J. BROWN 01/18/00					51684			
sheet index	revision sheet												

Mouser Electronics

Authorized Distributor

Click to View Pricing, Inventory, Delivery & Lifecycle Information:

[FCI / Amphenol:](#)

[51684-001LF](#)