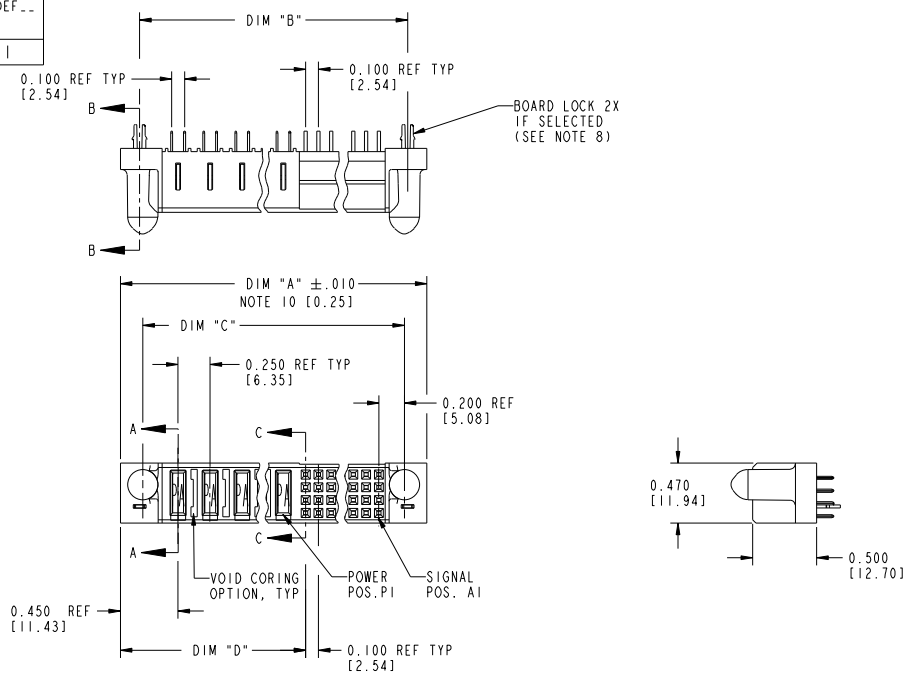


Tous droits strictement réservés. Reproduction ou communication à des tiers interdite sans autorisation écrite du propriétaire. Property of FCI. Droits de reproduction FCI.



All rights strictly reserved. Reproduction or issue to third parties in any form without written authority from the proprietor. Property of FCI. Copyright FCI.

PRODUCT NUMBER
51741-A00CCDDEF..
NOTE ①
SEE NOTE 1



mat'l code				SEE NOTE 2		tolerances unless otherwise specified		CUSTOMER		FCI	
itr	ecn no.	dr	date	linear		.XX±.01/0.X±0.3		COPY		www.fciconnect.com	
H	D605-0076	SW	04/11/05	linear		.XXX±.005/0.XX±0.13		projection		title	
J	D605-0153	SJ	06/09/05	linear		.XXXX±.0020/ .XXX±.051				VERTICAL RECEPTACLE W/ GUIDE PIN	
K	D605-0479	CS	11/18/05	angles		0°±2°				SIGNAL / POWER	
L	D608-0239	JC	09/11/08	dr	D. EATON	05-25-99		INCH/MM		product family	
				engr	J. BROWN	05-24-99		scale		PWRBLADE	
				chr	J. BROWN	05-24-99				size	
				appd	J. BROWN	05-26-99				dwg no	
sheet index				revision	L	L	L			A	
				sheet	1	2	3			51741	
										code	
										213	
										1 of 3	

Pro/E

3

code code

22526

PDM: Rev:L

STATUS:Released

Printed: Dec 20, 2010

Tous droits strictement réservés. Reproduction ou communication à des tiers interdite sans autorisation écrite du propriétaire. Property of FCI. Droit de reproduction FCI.



All rights strictly reserved. Reproduction or issue to third parties in any form without written authority from the proprietor. Property of FCI. Copyright FCI.

PRODUCT NUMBER
51741-A00CCCDDEF.. NOTE ①
SEE NOTE 1

1 | 2

3 |

4

DIM	LENGTH FORMULAS (SEE NOTE 10)
DIM "A"	.250 [6.35] x DD + .100 [2.54] x (CCC/4) + .650 [16.51] (NOTE 10)
DIM "B"	.250 [6.35] x DD + .100 [2.54] x (CCC/4) + .350 [8.89]
DIM "C"	.250 [6.35] x DD + .100 [2.54] x (CCC/4) + .300 [7.62]
DIM "D"	.250 [6.35] x DD + .375 [9.53]
DIM "F"	.250 [6.35] x DD + .100 [2.54] x (CCC/4) + .680 [17.27]
DIM "G"	.250 [6.35] x DD + .225 [5.72]

CONNECTOR NOTES

- ①. PRODUCT NUMBER CODE:
51741 - A 00 CCC DD E F LF
 NO THIS SUFFIX: 100u"/2.54um SnPb ON PCB INTERFACE
 ADD THIS SUFFIX: 78u"/2.00um Sn ON PCB INTERFACE
 RETENTION TO PCB (NOTE 8)
 TAIL OPTIONS (NOTE 7)
 NUMBER OF LEFT END POWER CONTACTS (NOTE 6)
 NUMBER OF SIGNAL CONTACTS (NOTE 5)
 ALWAYS "00" (ZERO, ZERO) (NOTE 4)
 PLATING (NOTE 3)
 BASE NUMBER
- ②. HOUSING MATERIAL: GLASS FILLED V-O HIGH TEMP THERMO PLASTIC.
 SIGNAL CONTACT MATERIAL: COPPER ALLOY
 POWER CONTACT MATERIAL: COPPER ALLOY
- ③. PLATING OPTION:
 I = SEE PRINT 10064183 FOR PLATING SPEC OF 51741-100CCCDDEF; 51741-100CCCDDEFLF
- ④. THIS PART NOT AVAILABLE WITH RIGHT SIDE POWER CONTACTS.
- ⑤. SIGNAL CONTACTS, 004 TO 148 AVAILABLE.
- ⑥. LEFT END POWER CONTACTS, 01 TO 20 AVAILABLE.
 MAXIMUM OF 20 POWER CONTACTS PER CONNECTOR.
- ⑦. TAIL OPTIONS:
 A = .135±.010 [3.43±.25] SOLDER TO BOARD
 C = .135±.010 [3.43±.25] PRESS FIT

- ⑧. RETENTION TO PCB OPTIONS:
 A = BOARD LOCK (REQUIRES .098 + .002, -.001 [2.49 +0.05, -0.03] THRU HOLE IN PCB)
 BOARD LOCK TO BE USED IN CONJUNCTION WITH AN .092 PCB OR THICKER.
 C = NO RETENTION FEATURE (ALL PRESS FIT).
 - ⑨. MANUFACTURE'S NAME, P/N, AND DATE CODE TO APPEAR ON THIS SURFACE.
 - ⑩. THE MAXIMUM OVERALL LENGTH (DIM A) OF A PART IS 8.00 [203.2].
 11. PRODUCT SPECIFICATION GS-12-149.
 12. REFERENCE 51698 FOR SPECIALS WORKSHEET.
- PCB NOTES:
13. ALL DIMENSIONS ARE BASIC UNLESS OTHERWISE SPECIFIED.
 14. ALL THROUGH HOLES ARE LOCATED WITH A TRUE POSITION OF .004 [0.01]
 15. ALL HOLE DIAMETERS ARE FINISHED HOLE SIZE.
 16. 0.0453±.001 [1.151±.02] DRILLED HOLES PLATED WITH 0.0003 [0.007] MIN SnPb OVER 0.001 [1.03] TO .003 [0.08] PLATING TO ACHIEVE A .040 ±.003 [1.02 ±.08] HOLE.
 17. A Δ SYMBOL WILL BE NEXT TO ANY DIMENSION, VIEW, OR NOTE WHICH HAS BEEN MODIFIED WITH THE CURRENT DRAWING REVISION.

mal'ti code				SEE NOTE 2		tolerances unless otherwise specified		CUSTOMER		FCI	
lir	ecr no.	dr	date	linear	projection	linear	projection	COPY	title	product family	code
						.XX±.01/0.X±0.3			VERTICAL RECEPTACLE W/ GUIDE PIN SIGNAL / POWER	PWRBLADE	213
						.XXX±.005/0.XX±0.13					sheet
						.XXX±.002/0.XXX±.051					2
				angles		0°±2°					
				dr		D. EATON 05-25-99					
				engr		J. BROWN 05-24-99					
				chr		J. BROWN 05-26-99					
				appd		J. BROWN 05-26-99					
sheet index	revision	sheet									

1 | 2

3 |

4

Pro/E

cage code 22526

PDM: Rev:L

STATUS:Released

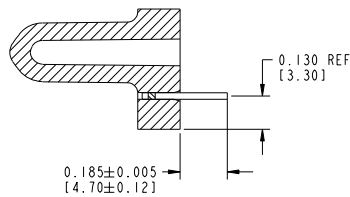
Printed: Dec 20, 2010

Tous droits strictement réservés. Reproduction ou communication à des tiers interdite sans autorisation écrite du propriétaire. Property of FCI. Droit de reproduction FCI.

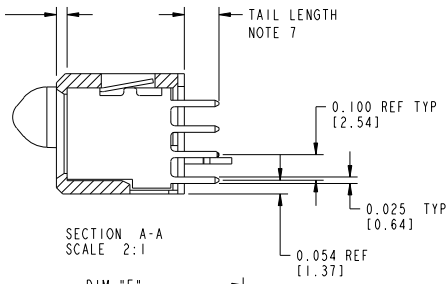


All rights strictly reserved. Reproduction or issue to third parties in any form without written authority from the proprietor. Property of FCI. Copyright FCI.

PRODUCT NUMBER
51741-A00CCDDEF..
NOTE ①
SEE NOTE 1



UNLESS OTHERWISE SPECIFIED

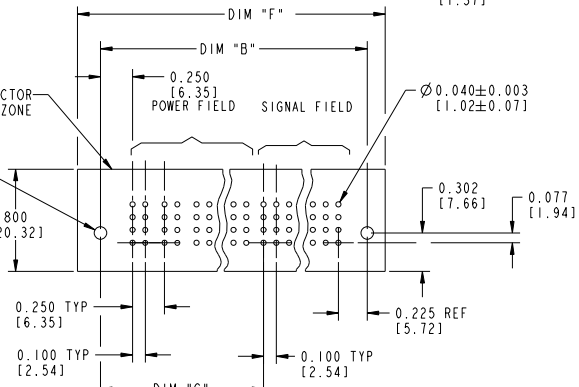


SECTION B-B
SCALE 2:1

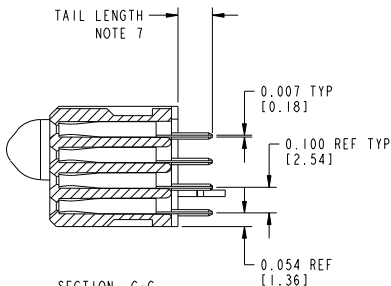
SECTION A-A
SCALE 2:1

MECHANICAL CONNECTOR
STAY-AYAW ZONE

2X $\varnothing 0.098^{+0.002}_{-0.001}$
[2.49^{+0.05}_{-0.02}]



RECOMMENDED PCB LAYOUT



SECTION C-C
SCALE 2:1

SEE NOTE 2				CUSTOMER		FCI	
lfr	ecr no.	dr	date	COPY	title	www.fciconnect.com	
L				linear	VERTICAL RECEPTACLE W/ GUIDE PIN SIGNAL / POWER		
				angles			
				dr			
				engr			
				chr			
				appd			
sheet	revision			scale	1:1		
index	sheet			size	A		

Pro/E

3

code code 22526

4

PDM: Rev:L

STATUS:Released

Printed: Dec 20, 2010