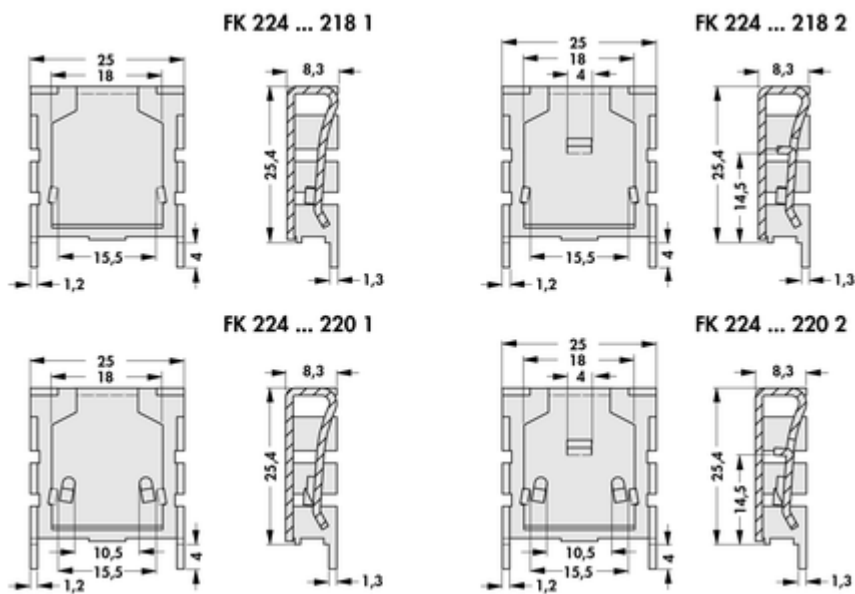
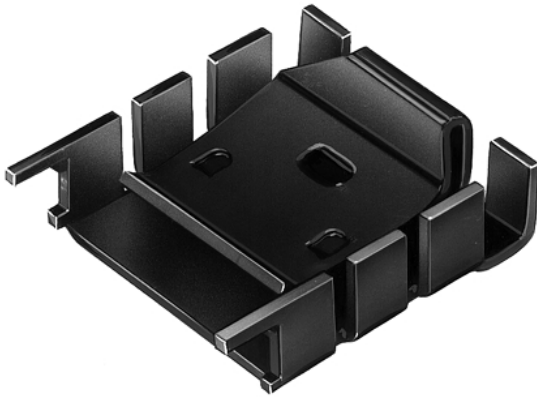


Attachable heatsink / **FK 224 ... 220 1** ⚠



for semiconductor-design TO 218, TO 220

#### Parameters of article FK 224 ... 220 1

<b>for transistor</b>	TO 220
<b>width [mm]</b>	25
<b>height [mm]</b>	8.3
<b>length on stock [mm]</b>	29.4
<b>thermal resistance [K/W]</b>	18
<b>surface treatment</b>	black anodised / solderable
<b>version</b>	with solder lug for vertical installation