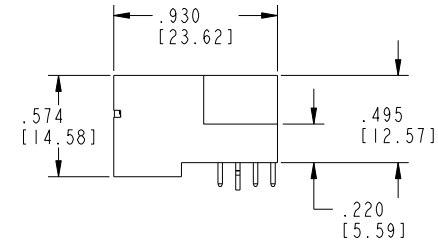
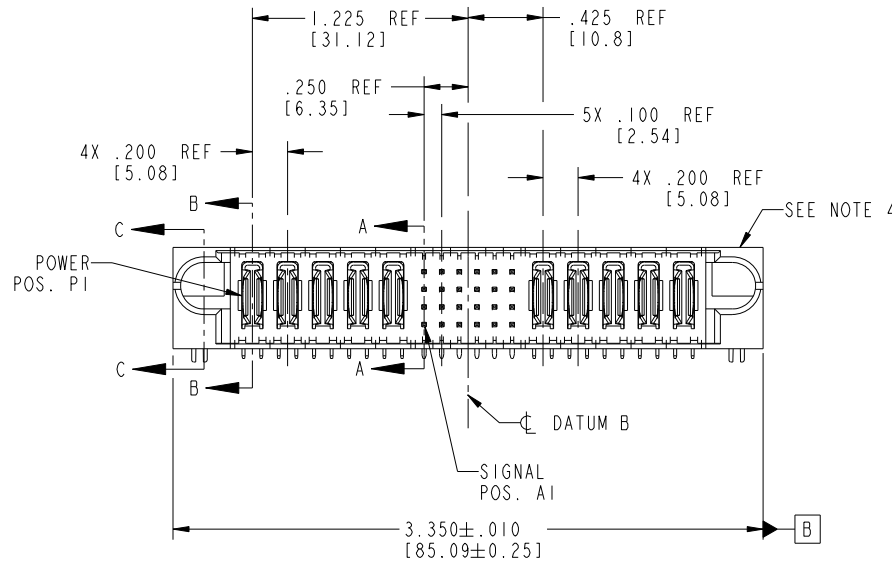
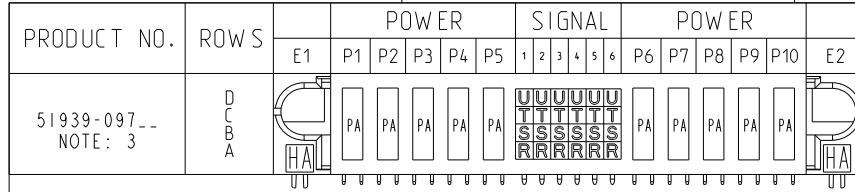




All rights strictly reserved. Reproduction or issue to third parties in any form whatever is not permitted without written authority from the proprietor. Property of FCI. Copyright FCI.

Tous droits strictement réservés. Reproduction ou communication à des tiers interdite sous quelque forme que ce soit sans autorisation écrite du propriétaire. Propriété de c FCI. Droits de reproduction FCI.

CODE	DIM "M" MATING LENGTH	CONTACT TYPE
R	.270 [6.86]	SIGNAL
S	.270 [6.86]	SIGNAL
T	.270 [6.86]	SIGNAL
U	.270 [6.86]	SIGNAL
PA	N/A [N/A]	POWER
HA	N/A [N/A]	HOLD-DOWN



mat'l code				SEE NOTE 2				tolerances unless otherwise specified				CUSTOMER				<div>FCI</div> <div>www.fciconnect.com</div>						
ltr	ecn no.			dr		date		linear	$.XX \pm .01 / 0.X \pm 0.3$				COPY				<div>projection</div> <div></div> <div>title 5P + 24S + 5P RIGHT ANGLE SOLDER HEADER</div>					
A	V03-1267			TAB		12/01/03			$.XXX \pm .005 / 0.XX \pm 0.13$				<div>INCH/MM</div> <div></div> <div>scale 1:1</div>									
B	DG06-0014			JMG		01/16/06			$.XXX \pm .0020 / 0.XXX \pm 0.051$													
C	DG09-0003			WD		01/17/09		angles	$0^\circ \pm 2^\circ$													
								dr	T. BRUNGARD 12/01/03								product family PwrBlade				code	
								enrg	M. GRAY 12/01/03								size dwg no 213					
								chr	M. GRAY 12/01/03								A 51939-097				sheet 1 of 4	
								appd	M. GRAY 12/01/03													
sheet index		revision		C	C	C	C	C	C													
		sheet		1	2	3	4															

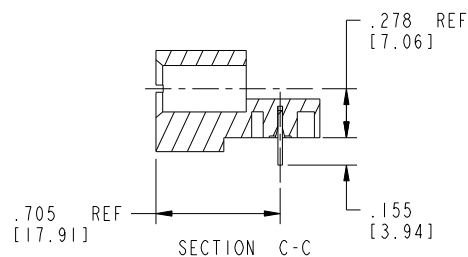
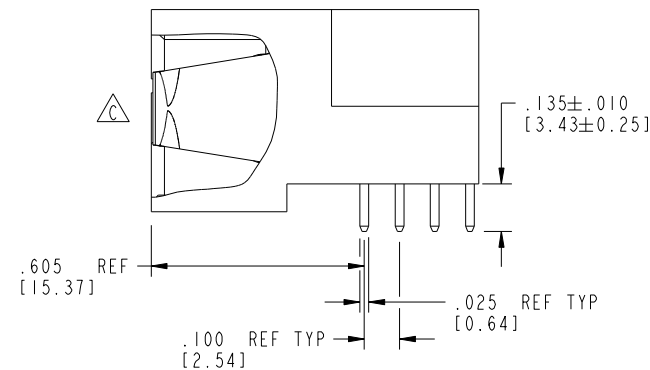
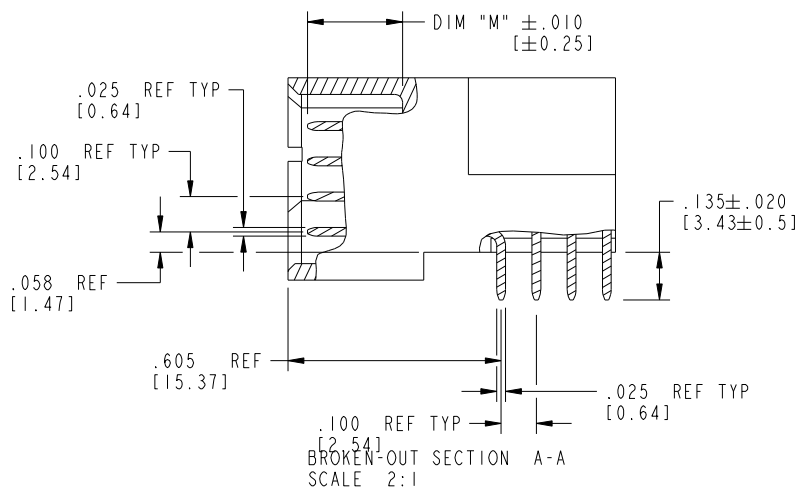
cage code 22526






All rights strictly reserved. Reproduction or issue to third parties in any form whatever is not permitted without written authority from the proprietor. Property of FCI. Copyright FCI.

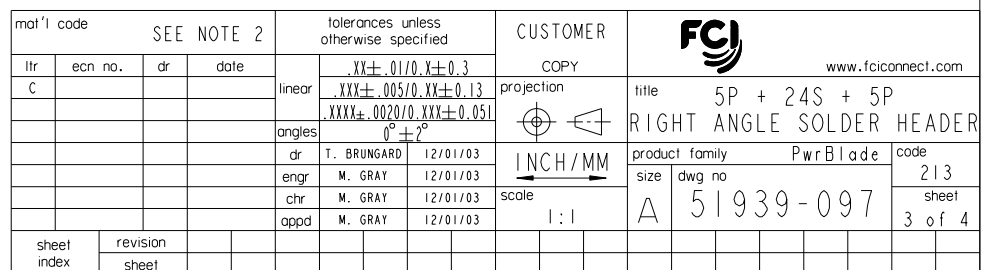
Tous droits strictement réservés. Reproduction ou communication à des tiers interdite sous quelque forme que ce soit sans autorisation écrite du propriétaire. Propriété de c FCI. Droits de reproduction FCI.

PRODUCT NUMBER
51939-097--
NOTE: 3



mat'l code				SEE NOTE 2				tolerances unless otherwise specified				CUSTOMER								www.fciconnect.com									
ltr		ecn no.		dr		date		linear		$.XX \pm .01 / 0.X \pm 0.3$				COPY								title 5P + 24S + 5P RIGHT ANGLE SOLDER HEADER							
C										$.XXX \pm .005 / 0.XX \pm 0.13$																			
										$.XXX \pm .0020 / 0.XXX \pm 0.051$																			
								angles		$0^\circ \pm 2^\circ$								product family PwrBlade				code 213 sheet 2 of 4							
										$0^\circ \pm 2^\circ$																			
								dr		T. BRUNGARD 12/01/03				INCH/MM				size				dwg no 51939-097							
								enrg		M. GRAY 12/01/03																			
								chr		M. GRAY 12/01/03																			
										appd				M. GRAY 12/01/03				scale 1:1				A							
sheet index		revision sheet																											

All rights strictly reserved. Reproduction or issue to third parties in any form whatever is not permitted without written authority from the proprietor.
Property of FCI. Copyright FCI.



Tous droits strictement reserves. Reproduction ou communication a des tiers interdite sous quelque forme que ce soit sans autorisation écrite du propriétaire.
Propriete de c FCI. Droits de reproduction FCI.



All rights strictly reserved. Reproduction or issue to third parties in any form whatever is not permitted without written authority from the proprietor.
Property of FCI. Copyright FCI.

PRODUCT NUMBER
51939-097__
NOTE: 3

NOTES:

1. DIMENSIONS AND TOLERANCES ARE IN ACCORDANCE WITH ASME Y14.5M, 1994 UNLESS OTHERWISE SPECIFIED.

CONNECTOR NOTES:

2. HOUSING MATERIAL: UL 94 V-0 GLASS FILLED HIGH-TEMP THERMOPLASTIC
POWER CONTACT MATERIAL: COPPER ALLOY
SIGNAL PIN MATERIAL: COPPER ALLOY

3. SEE ITEM 1 & 2 IN PRINT 10064183 FOR PLATING SPEC OF 51939-097 AND 51939-097LF RESPECTIVELY.

4. MANUFACTURER'S NAME, P/N, AND DATE CODE TO APPEAR ON THIS SURFACE.

5. PRODUCT SPECIFICATION GS-12-149.
APPLICATION SPECIFICATION BUS-20-067.

6. PACKAGED IN TRAYS.

PCB NOTES:

7. ALL HOLE DIAMETERS ARE FINISHED HOLE SIZE.

8. MOUNTING HOLES, WHERE APPLICABLE, ARE UNPLATED.

9. $\varnothing .0453 \pm .0010$ [1.151 \pm 0.025] DRILLED HOLES PLATED WITH
.0003 [0.008] MIN SnPb OVER .001 [0.03]
TO .003 [0.08] Cu PLATING TO ACHIEVE
 $\varnothing .040 \pm .003$ [1.02 \pm .07] HOLE.

10. "DIM XXX" TO BE DETERMINED BY THE CUSTOMER.

11. CONNECTOR KEEP-OUT ZONE.

12. A/C SYMBOL WILL BE NEXT TO ANY DIMENSION, VIEW, OR NOTE WHICH HAS BEEN MODIFIED WITH THE CURRENT DRAWING REVISION.

mat'l code				SEE NOTE 2		tolerances unless otherwise specified		CUSTOMER		FCI		www.fciconnect.com	
ltr	ecr no.	dr	date					COPY					
C				linear		.XX \pm .01 / 0.X \pm 0.3		projection		title	5P + 24S + 5P		
						.XXX \pm .005 / 0.XX \pm 0.13				RIGHT ANGLE SOLDER HEADER			
				angles		.XXX \pm .0020 / 0.XXX \pm 0.051				product family	PwrBlade	code	213
				dr	T. BRUNGARD	12/01/03		INCH/MM		size	dwg no	sheet	4 of 4
				enr	M. GRAY	12/01/03		scale		A	51939-097		
				chr	M. GRAY	12/01/03		1:1					
				appd	M. GRAY	12/01/03							
sheet index	revision sheet												

cage code 22526

Mouser Electronics

Authorized Distributor

Click to View Pricing, Inventory, Delivery & Lifecycle Information:

FCI:

51939-097