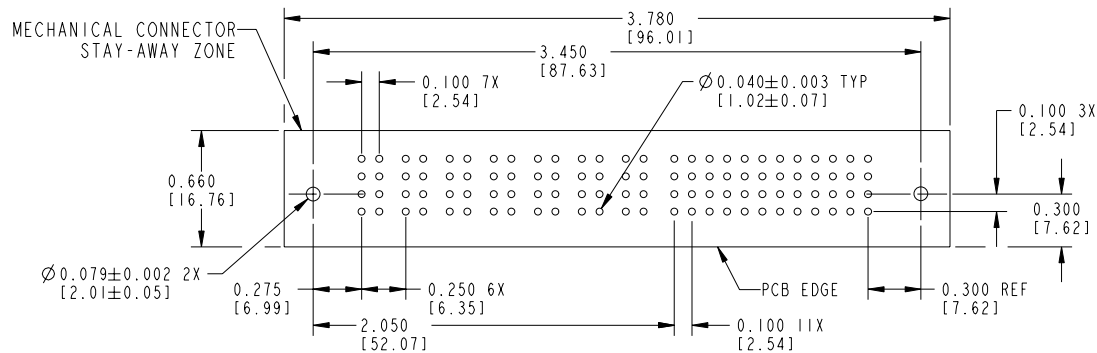
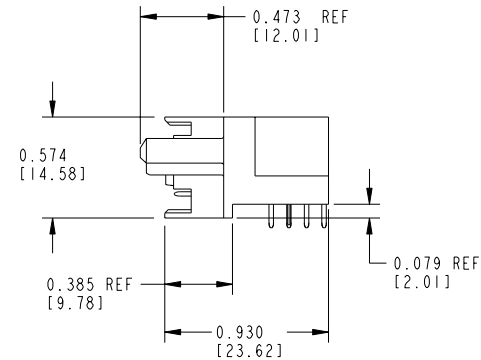
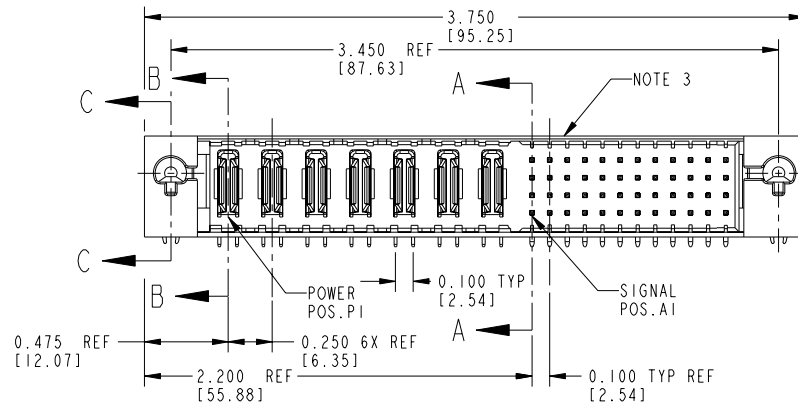


Tous droits strictement réservés. Reproduction ou communication à des tiers interdite sous quelque forme que ce soit sans autorisation écrite du propriétaire. Propriété de c FCI. Droits de reproduction FCI.

All rights strictly reserved. Reproduction or issue to third parties in any form whatever is not permitted without written authority from the proprietor. Property of FCI. Copyright FCI.

PRODUCT No.	ROWS	POWER								SIGNAL												E2
		E1	P1	P2	P3	P4	P5	P6	P7	1	2	3	4	5	6	7	8	9	10	11	12	
51530-XX001 -- NOTE:2	D C B A		PA	PA	PA	PA	PA	PA	PA	UUUUUUUUUUUUUU	UUUUUUUUUUUUUU	UUUUUUUUUUUUUU	UUUUUUUUUUUUUU	UUUUUUUUUUUUUU	UUUUUUUUUUUUUU	UUUUUUUUUUUUUU	UUUUUUUUUUUUUU	UUUUUUUUUUUUUU	UUUUUUUUUUUUUU	UUUUUUUUUUUUUU	UUUUUUUUUUUUUU	
			SSSSSSSSSSSSSS	SSSSSSSSSSSSSS	SSSSSSSSSSSSSS	SSSSSSSSSSSSSS	SSSSSSSSSSSSSS	SSSSSSSSSSSSSS	SSSSSSSSSSSSSS	SSSSSSSSSSSSSS	SSSSSSSSSSSSSS	SSSSSSSSSSSSSS	SSSSSSSSSSSSSS	SSSSSSSSSSSSSS	SSSSSSSSSSSSSS	SSSSSSSSSSSSSS	SSSSSSSSSSSSSS	SSSSSSSSSSSSSS	SSSSSSSSSSSSSS	SSSSSSSSSSSSSS	SSSSSSSSSSSSSS	
			RRRRRRRRRRRRRR	RRRRRRRRRRRRRR	RRRRRRRRRRRRRR	RRRRRRRRRRRRRR	RRRRRRRRRRRRRR	RRRRRRRRRRRRRR	RRRRRRRRRRRRRR	RRRRRRRRRRRRRR	RRRRRRRRRRRRRR	RRRRRRRRRRRRRR	RRRRRRRRRRRRRR	RRRRRRRRRRRRRR	RRRRRRRRRRRRRR	RRRRRRRRRRRRRR	RRRRRRRRRRRRRR	RRRRRRRRRRRRRR	RRRRRRRRRRRRRR	RRRRRRRRRRRRRR	RRRRRRRRRRRRRR	



RECOMMENDED PCB LAYOUT

ITEM NO.	DIM "M" ±0.010 [0.25]	CONTACT TYPE
E	0.220 [5.59]	SIGNAL
H	0.220 [5.59]	SIGNAL
R	0.270 [6.86]	SIGNAL
S	0.270 [6.86]	SIGNAL
T	0.270 [6.86]	SIGNAL
U	0.270 [6.86]	SIGNAL
PA	N/A [N/A]	POWER
HA	N/A [N/A]	HOLD-DOWN

mat'l code				NOTE 1		tolerances unless otherwise specified		CUSTOMER	
ltr	ecn no.	dr	date	linear	angles	.XX±.01/.XX±.3	.XXX±.005/.XX±.13	COPY	projection
A	V91742	LEV4	11/19/99						
B	V02755	EKK	12-04-00						
C	VI2846	DAI	12-31-01						
D	DG06-0011	CS	01/09/06						
				dr	engr	M. CLOUSER 06/29/98	J. BROWN 06/29/98		
				chr	appd	J. BROWN 06/29/98	J. BROWN 06/29/98		
sheet index	revision	D	D						
sheet	sheet	1	2						

CUSTOMER		A FCI		www.fciconnect.com	
COPY		title		7P + 48S	
projection		RIGHT ANGLE SOLDER HEADER			
INCH/MM		product family		PwrBlade	
scale		size		dwg no	
1:1		A		51530	
		code		213	
		sheet		1 of 2	
		cage code		22526	
				4	

Pro/E

PDM: Rev:D

STATUS:Released

Printed: Dec 20, 2010

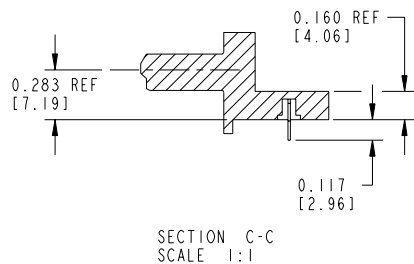
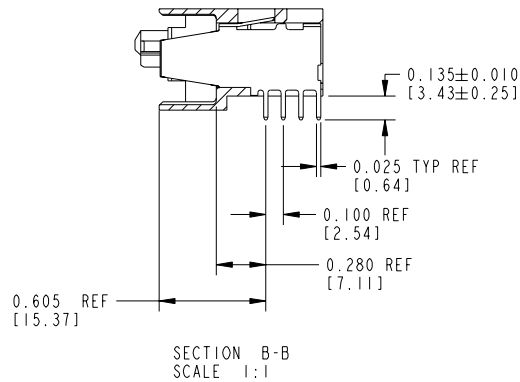
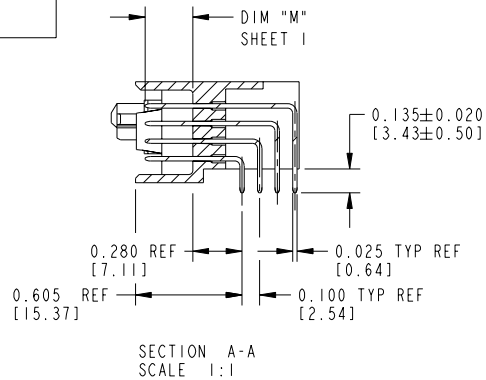
Tous droits strictement réservés. Reproduction ou communication a des tiers interdite sous quelque forme que ce soit sans autorisation écrite du propriétaire. Propriété de c FCI. Droits de reproduction FCI.

A
FCI

All rights strictly reserved. Reproduction or issue to third parties in any form whatever is not permitted without written authority from the proprietor. Property of FCI. Copyright FCI.

PRODUCT NUMBER

51530-XX001--
NOTE:2

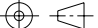
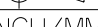


CONNECTOR NOTES:

1. HOUSING MATERIAL: UL94 V-0 GLASS FILLED HIGH TEMP. THERMOPLASTIC.
SIGNAL PIN MATERIAL: COPPER ALLOY.
POWER CONTACT MATERIAL: COPPER ALLOY.
2. PLATING:
51530-XX001,51530-XX001LF,PLATING SPEC SEE PRINT:100064183.
3. MANUFACTURER'S NAME, P/N, AND DATE CODE TO APPEAR ON THIS SURFACE.
4. PRODUCT SPECIFICATION GS-12-149.

PCB NOTES:

5. ALL DIMENSIONS ARE BASIC UNLESS OTHERWISE SPECIFIED.
6. ALL THROUGH HOLES ARE LOCATED WITH A TRUE POSITION OF 0.004[0.10]
7. ALL HOLE DIAMETERS ARE FINISHED HOLE SIZE
8. $\varnothing 0.079$ [2.01] THROUGH HOLES ARE UNPLATED
9. $\varnothing 0.0453 \pm 0.0010$ [1.151 \pm 0.025] DRILLED HOLES PLATED WITH 0.0003[0.008] MIN SnPb OVER 0.001[0.03] to 0.003[0.08] Cu PLATING TO ACHIEVE A 0.040 \pm 0.003 [1.02 \pm 0.07] HOLE

mat'l code				NOTE 1		tolerances unless otherwise specified		CUSTOMER		A FCI www.fciconnect.com	
ltr	ecn no.	dr	date	linear	.XX±.01/.XX±.3		COPY			title 7P + 48S RIGHT ANGLE SOLDER HEADER	
D					.XXX±.005/.XX±.13		projection				
					.XXXX±.0020/.XXX±.051						
					0° ± 2°						
				angles	0° ± 2°					product family PwrBlade code 213 sheet 2	
		dr	M. CLOUSER	06/29/98			INCH/MM				
		engr	J. BROWN	06/29/98			scale				
		chr	J. BROWN	06/29/98			1:1				
		appd	J. BROWN	06/29/98					A	51530	
sheet index	revision sheet										

Pro/E

3

cage code 22526

4

PDM: Rev:D

STATUS:Released

Printed: Dec 20, 2010

Mouser Electronics

Authorized Distributor

Click to View Pricing, Inventory, Delivery & Lifecycle Information:

[FCI / Amphenol:](#)

[51530-XX001](#)