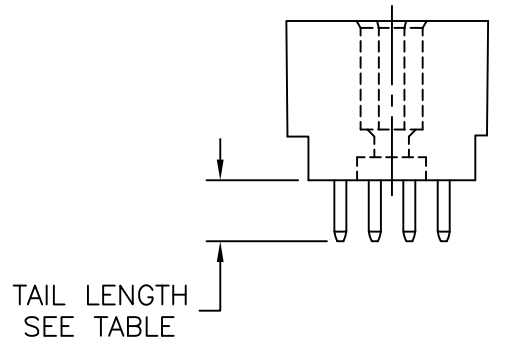
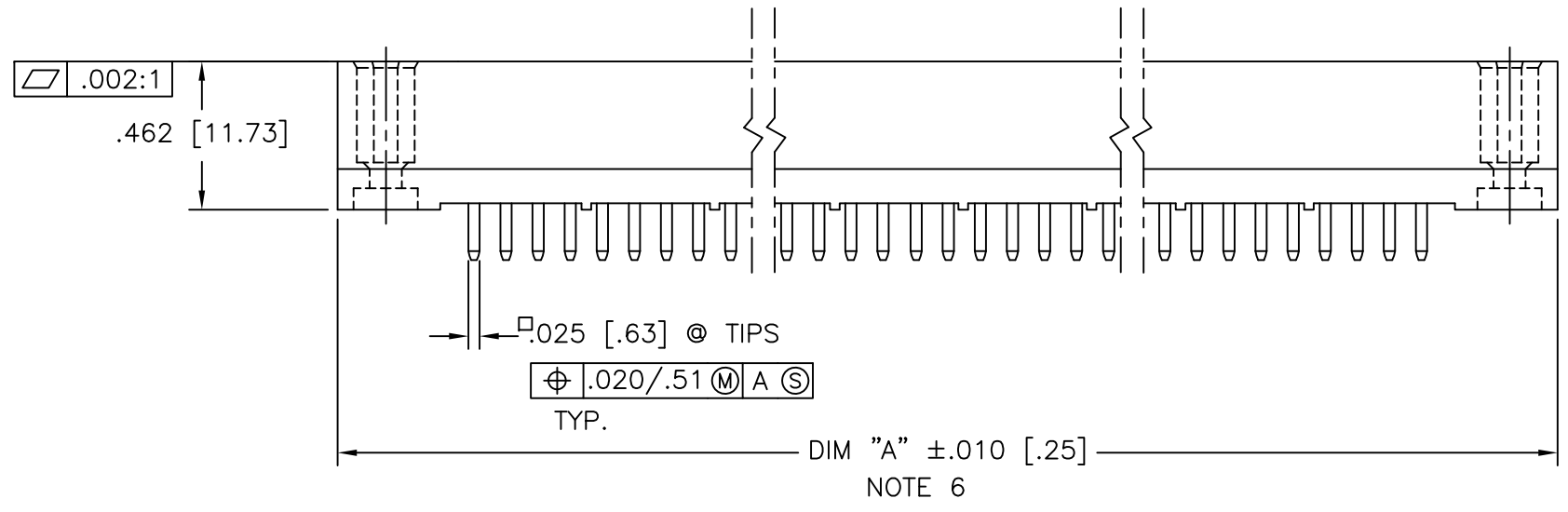
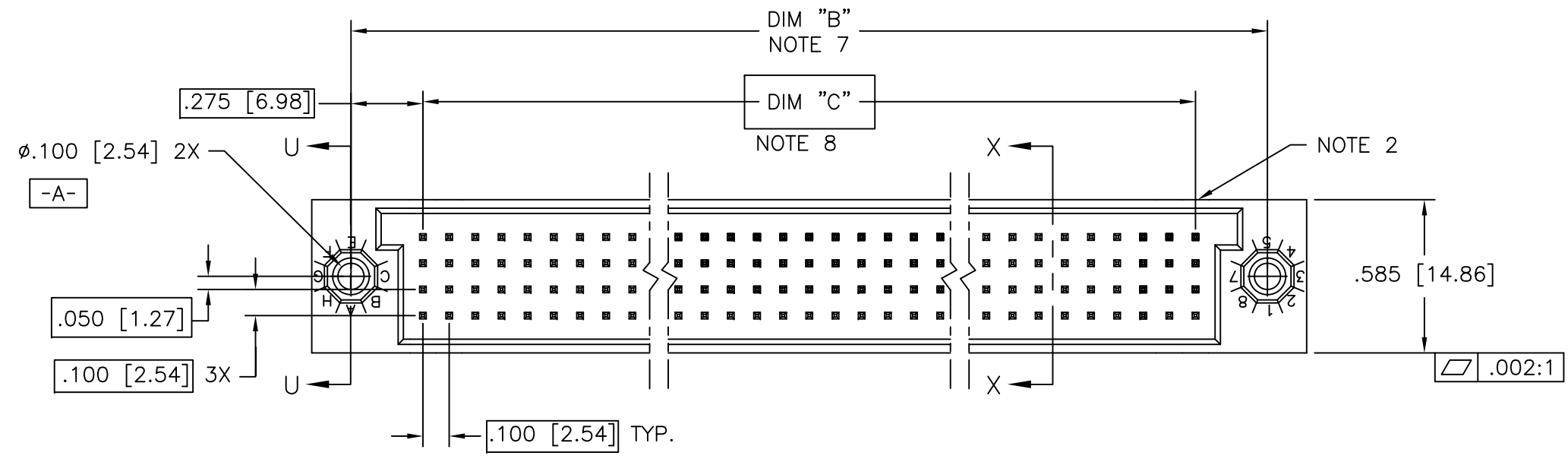


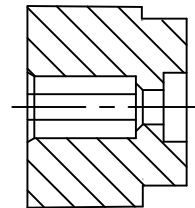
PRODUCT NUMBER
SEE TABLE



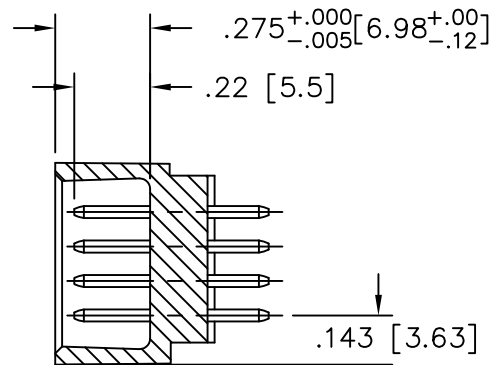
mat'l. code NOTE 4				surface ISO 1302 ✓		tolerance ISO 406 ISO 1101		projection INCH/MM		product family HPC			
ltr	ecn no	dr	date	tolerances unless otherwise specified						title			
T	ELX-I-27215	MJA	06/13/17	angles	linear	.XX±.01/.3		INCH/MM		4 ROW VERTICAL HEADER W/SOLDER TAIL PINS, 0 G.P.			
M	V00272	JWS	2/1/00	0°±2'		.XXX±.005/.13		scale 1:1		dwg no			
N	V05-0475	DAI	7/20/05	dr	D.INGRAM	7/20/05		Amphenol FCi		sheet 1 of 4		size	
P	V05-0723	HTB	7/20/05	enr	D.HORCHLER	7/20/05				50015		A3	
R	V05-1039	DAI	11/11/05	chr	M JACOB	06/13/17				type Product Customer Drawing			
S	M06-0283	MHT	7/27/06	appd	BIJU K PAUL	06/13/17							
sheet	revision	T	S	S	T								
index	sheet	1	2	3	4								

PRODUCT NUMBER

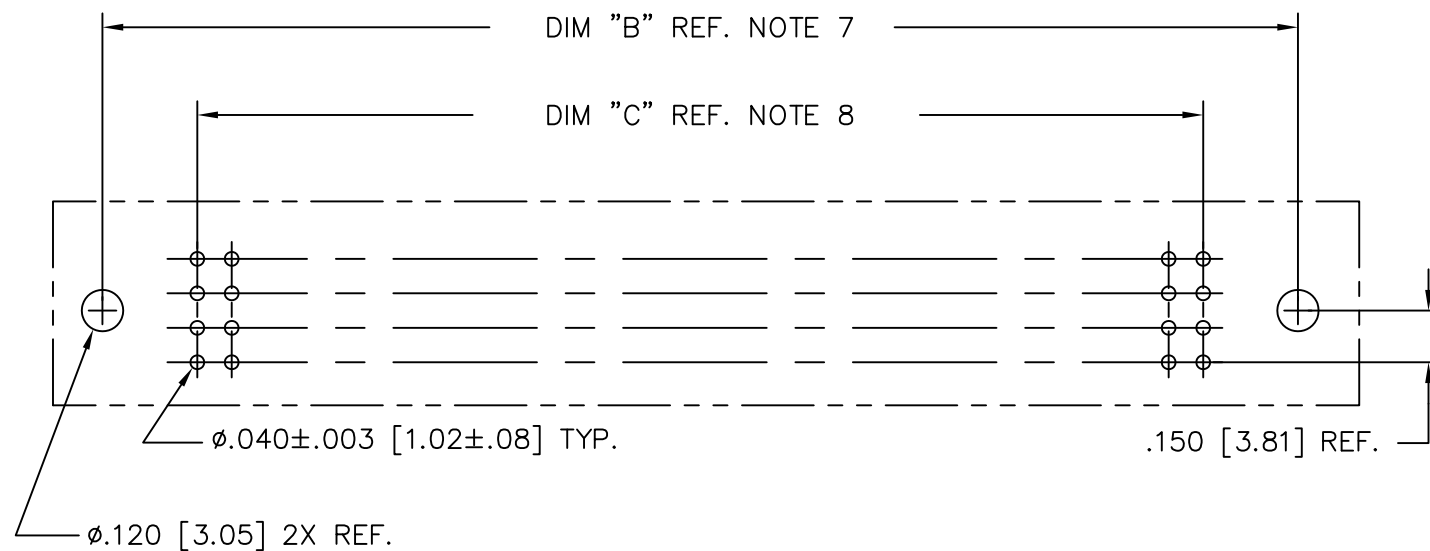
SEE TABLE



SECTION U-U



SECTION X-X



RECOMMENDED PCB LAYOUT
(ALL HOLES LOCATED ON .100/2.54 GRID
UNLESS OTHERWISE SPECIFIED)

mat'l. code NOTE 4		surface ISO 1302 ✓	tolerance ISO 406 ISO 1101	projection 	product family HPC
ltr	ecn no	dr	date	tolerances unless otherwise specified	title 4 ROW VERTICAL HEADER W/SOLDER TAIL PINS, 0 G.P.
S				angles linear 0°±2°	
				.XX±.01/.3 .XXX±.005/.13 .XXXX±.0020/.05	INCH/MM
				dr D.INGRAM 7/20/05 enr D.HORCHLER 7/20/05 chr T.BREWBAKER 7/20/05 appd D.HORCHLER 7/20/05	scale 1:1
sheet index	revision sheet				Amphenol FCi
					dwg no 50015 sheet 2 of 4 size A3
					type Product Customer Drawing

PRODUCT NUMBER
SEE TABLE

50015-XX022 AND 50015-XX022LF ONLY

	1	5	10	15	20	25	30	32
D			B		B	B		
C			B		B	C		
B	B	B	C		B	B		
A	B		C		B	C		

PIN
1

NOTES FOR -XX022 AND -XX022LF ONLY:

- ALL POSITIONS ARE LOADED WITH "A" EXCEPT WHERE NOTED.
- COLUMN 1, ROW A IS DESIGNATED AS SIGNAL PIN 1, AS VIEWED FROM THE MATING FACE.
- SIGNAL DATA FOR 50015-XX022 AND 50015-XX022LF:
SIZE 4 x 32
TOTAL NO. OF POSITIONS - 128
NO. OF POSITIONS LOADED - 128

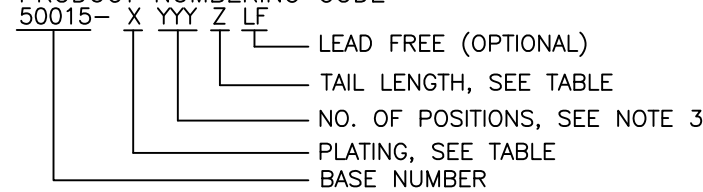
ITEM KEY	QTY.	MATING LENGTH
A	113	.180/4.57
B	11	.260/6.60
C	4	.220/5.59

mat'l. code NOTE 4		surface ISO 1302 ✓	tolerance ISO 406 ISO 1101	projection 	product family HPC
ltr	ecn no	dr	date	tolerances unless otherwise specified	title 4 ROW VERTICAL HEADER W/SOLDER TAIL PINS, 0 G.P.
S				angles linear .XX±.01/.3 .XXX±.005/.13 .XXXX±.0020/.05	
				0°±2'	INCH/MM scale 1:1
		dr	D.INGRAM	7/20/05	Amphenol FCi dwg no 50015 sheet 3 of 4 size A3
		enr	D.HORCHLER	7/20/05	
		chr	T.BREWBAKER	7/20/05	
		appd	D.HORCHLER	7/20/05	
sheet index	revision sheet				type Product Customer Drawing

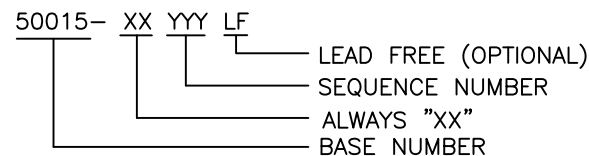
PRODUCT NUMBER	NUMBER OF POSITIONS NOTE 3	TAIL LENGTH ±.015/0.38	CONTACT PLATING NOTE 12
50015-1YYYA	YYY	.177/4.50	30u"/.76u Au
50015-1YYYC	YYY	.533/13.54	30u"/.76u Au
50015-1YYVD	YYY	.733/18.62	30u"/.76u Au
50015-1YYYG	YYY	.250/6.35	30u"/.76u Au
50015-1YYYJ	YYY	.120/3.05	30u"/.76u Au
50015-3YYYA	YYY	.177/4.50	50u"/1.27u Au
50015-3YYYC	YYY	.533/13.54	50u"/1.27u Au
50015-3YYVD	YYY	.733/18.62	50u"/1.27u Au
50015-3YYYG	YYY	.250/6.35	50u"/1.27u Au
50015-3YYYJ	YYY	.120/3.05	50u"/1.27u Au
50015-5YYYA	YYY	.177/4.50	30u"/.76u GXT
50015-5YYALF	YYY	.177/4.50	30u"/.76u GXT
50015-5YYYC	YYY	.533/13.54	30u"/.76u GXT
50015-5YYCLF	YYY	.533/13.54	30u"/.76u GXT
50015-5YYVD	YYY	.733/18.62	30u"/.76u GXT
50015-5YYDLF	YYY	.733/18.62	30u"/.76u GXT
50015-5YYYG	YYY	.250/6.35	30u"/.76u GXT
50015-5YYYGLF	YYY	.250/6.35	30u"/.76u GXT
50015-5YYYJ	YYY	.120/3.05	30u"/.76u GXT
50015-5YYYJLF	YYY	.120/3.05	30u"/.76u GXT
50015-XX022	128	.250/6.35	30u"/.76u Au
50015-XX022LF	128	.250/6.35	30u"/.76u GXT

NOTES:

1. PRODUCT NUMBERING CODE



PRODUCT NUMBERING CODE FOR SELECT LOAD



- ②. MANUFACTURE'S LOGO, PN, AND LOT CODE TO APPEAR ON THIS SURFACE.
- ③. THIS PRODUCT IS CONFIGURED IN SIZES OF 6 THRU 80 COLUMNS IN INCREMENTS OF ONE, i.e. 6, 7, 8, 9,79, 80.
- ④. MATERIAL:
HOUSING - GLASS AND MINERAL FILLED HIGH TEMPERTURE THERMOPLASTIC, FLAME RETARDANT PER UL94V-0. COLOR-BLACK
CONTACT - PHOS BRONZE
- 5. PLATING:
CONTACT AREA - SEE PRODUCT NUMBER TABLE
TAILS-EITHER TIN OR TIN LEAD, SEE PRODUCT NUMBER TABLE
- ⑥. DIMENSION "A" CALCULATION = .100 (2.54) X NO. OF COLUMNS + .75 (19.1)
- ⑦. DIMENSION "B" CALCULATION = .100 (2.54) X NO. OF COLUMNS + .450(11.43)
- ⑧. DIMENSION "C" CALCULATION = .100 (2.54) X NO. OF COLUMNS - .100(2.54)
- 9. ALL POSITIONS ARE LOADED EXCEPT FOR -XXYYY ASSEMBLIES WHICH HAVE SELECTIVE LOADING.
- 10. THIS PRODUCT (WITH "LF" SUFFIX) MEETS EUROPEAN UNION DIRECTIVES AND OTHER COUNTRY REGULATIONS AS DESCRIBED IN GS-22-008.
- 11. THIS HOUSING WILL WITHSTAND EXPOSURE TO 260°C PEAK TEMPERATURE FOR 10-30 SECONDS IN A CONVECTION, INFRA-RED OR VAPOR PHASE REFLOW OVEN.
- 12. PLATING OPTIONS:
MAY BE EITHER GOLD OR GXT PLATED AT MANUFACTURER'S OPTION

mat'l. code NOTE 4		surface ISO 1302 ✓	tolerance ISO 406 ISO 1101	projection 	product family HPC
ltr	ecn no	dr	date	title	
T				4 ROW VERTICAL HEADER W/SOLDER TAIL PINS, 0 G.P.	
tolerances unless otherwise specified		.XX±.01/.3		INCH/MM	
angles		.XXX±.005/.13		scale 1:1	
0°±2'		.XXXX±.0020/.05		dwg no	
dr	D.INGRAM	7/20/05	sheet 4 of 4		size
enr	D.HORCHLER	7/20/05	50015		A3
chr	M JACOB	06/13/17	type Product Customer Drawing		
appd	BIJU K PAUL	06/13/17			
sheet index	revision sheet				

Mouser Electronics

Authorized Distributor

Click to View Pricing, Inventory, Delivery & Lifecycle Information:

[FCI / Amphenol:](#)

[50015-1160J](#) [50015-1200J](#) [50015-1300A](#) [50015-1160JLF](#) [50015-1180ALF](#) [50015-5068ALF](#) [50015-5092ALF](#)
[50015-5108CLF](#) [50015-5216CLF](#) [50015-5320GLF](#) [50015-5068G](#) [50015-5100JLF](#) [50015-5160JLF](#) [50015-5200JLF](#)
[50015-5120CLF](#) [50015-1148JLF](#) [50015-1060A](#) [50015-1076J](#) [50015-1120A](#) [50015-1120C](#) [50015-1128A](#) [50015-](#)
[1152A](#) [50015-1160D](#) [50015-1180A](#) [50015-1192D](#) [50015-1260A](#) [50015-5040A](#) [50015-5068A](#) [50015-5092A](#) [50015-](#)
[5100A](#) [50015-5108C](#) [50015-5216C](#) [50015-5320G](#) [50015-1120G](#) [50015-5060ALF](#) [50015-5076JLF](#) [50015-5100J](#)
[50015-5112DLF](#) [50015-5120ALF](#) [50015-5120GLF](#) [50015-5128ALF](#) [50015-5152ALF](#) [50015-5160DLF](#) [50015-](#)
[5192DLF](#) [50015-5260ALF](#) [50015-5300ALF](#) [50015-1040A](#) [50015-1040C](#) [50015-1040D](#) [50015-1040JLF](#) [50015-](#)
[1048J](#) [50015-1052A](#) [50015-1052J](#) [50015-1056JLF](#) [50015-1060D](#) [50015-1060G](#) [50015-1060JLF](#) [50015-1064A](#)
[50015-1064J](#) [50015-1068C](#) [50015-1068D](#) [50015-1068G](#) [50015-1068JLF](#) [50015-1072A](#) [50015-1072JLF](#) [50015-](#)
[1080A](#) [50015-1080C](#) [50015-1080G](#) [50015-1080J](#) [50015-1084A](#) [50015-1084J](#) [50015-1088JLF](#) [50015-1092JLF](#)
[50015-1096G](#) [50015-1096JLF](#) [50015-1100A](#) [50015-1100C](#) [50015-1100D](#) [50015-1100JLF](#) [50015-1104JLF](#) [50015-](#)
[1108D](#) [50015-1108J](#) [50015-1112A](#) [50015-1112JLF](#) [50015-1116JLF](#) [50015-1120J](#) [50015-1124JLF](#) [50015-1128C](#)
[50015-1128D](#) [50015-1128G](#) [50015-1128J](#) [50015-1132JLF](#) [50015-1136JLF](#) [50015-1140A](#) [50015-1140C](#) [50015-](#)
[1140JLF](#) [50015-1144J](#) [50015-1148A](#) [50015-1148D](#) [50015-1148J](#)