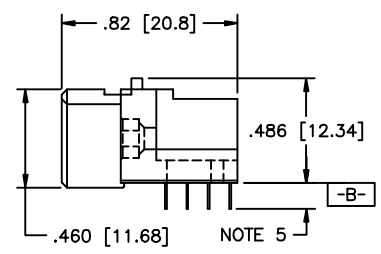
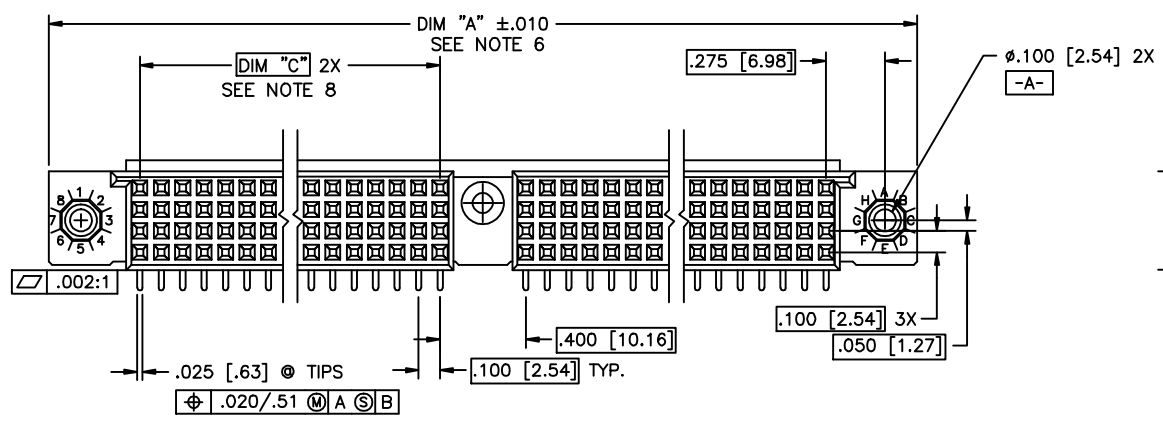
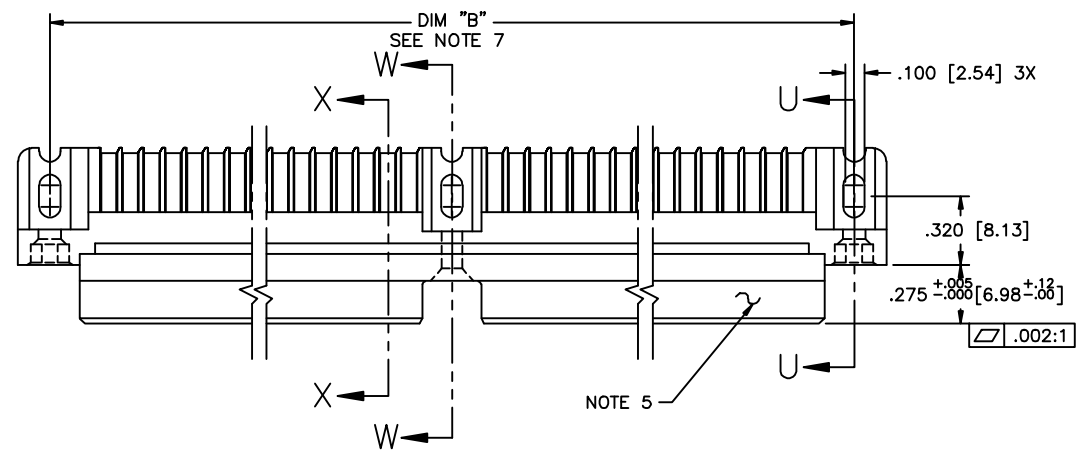




Copyright FCI

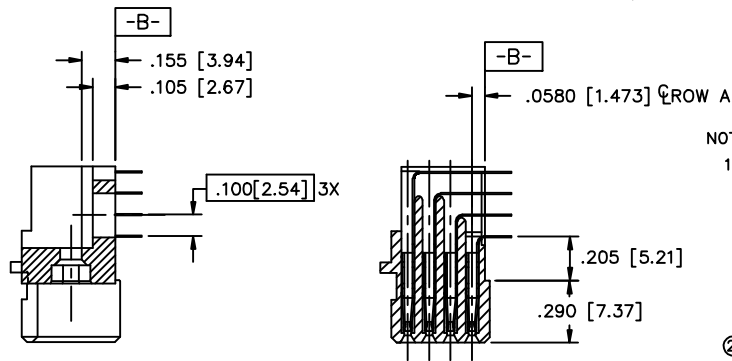
PRODUCT NUMBER
SEE NOTE 1



mat'l. code	SEE NOTE 3			surface	ISO 1902	tolerance	ISO 406	projection	product family
ltr	ecn no	dr	date	tolerances unless otherwise specified		linear	ISO 7101	INCH/MM	HPC
F	v41511	GAH	10/13/94	angles		XXX.X/XXX.X			4 ROW R/A RECEPTACLE SOLDER TAIL, 1 GUIDE PIN
G	v50266	SAR	9/05/95	linear		XXX.X/XXX.X		scale 1:1	
H	v82251	HTB	12/28/98	σ±z'		XXX.X/XXX.X			dwg no
J	v00253	JWS	1/12/00	dr	D. SHEAFFER	1/07/90			sheet 1 of 2
K	v05-0510	LP	7/18/05	engr	S. CLARK	1/07/90			size
L	m06-0255	EAE	7/06/06	chr	S. CLARK	1/07/90			A3
M	m08-0280	AGS	9/30/08	appd	S. CLARK	1/07/90			type
sheet	revision	M	M						Product Customer Drawing
index	sheet	1	2						

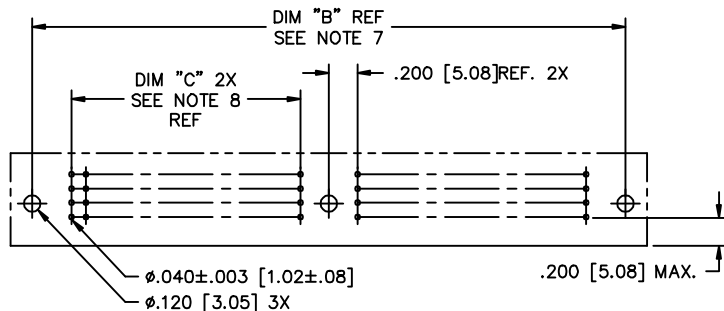
Form A3 1 2 3 4 5 6

PRODUCT NUMBER SEE NOTE 1	NUMBER OF POSITIONS SEE NOTE 2	"Z" - TAIL LENGTH	SOLDER TAIL PLATING	CONTACT PLATING NOTE 11
50004-1YYYY	YYY	NOTE 4	TIN LEAD	30u"/.76um Au
50004-3YYYY	YYY	NOTE 4	TIN LEAD	50u"/1.27um Au
50004-5YYYY	YYY	NOTE 4	TIN LEAD	30u"/.76um GXT
50004-5YYYYLF	YYY	NOTE 4	TIN	30u"/.76um GXT

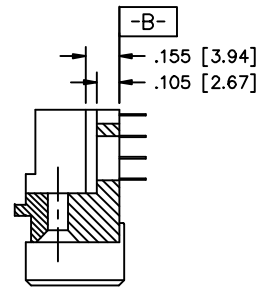


SECTION U-U

SECTION X-X



RECOMMENDED PCB LAYOUT
(ALL HOLES LOCATED ON .100 [2.54] GRID
UNLESS OTHERWISE SPECIFIED)



SECTION W-W

NOTES:

- PRODUCT NUMBERING CODE:
50004 - X YYY Z LF
LEAD FREE (OPTIONAL WITH GTX VERSION)
TAIL LENGTH (NOTE 4)
NO. OF POSITIONS (NOTE 2)
PLATING (SEE TABLE)
BASE NUMBER
- THIS PRODUCT IS CONFIGURED IN SIZES OF 20 THRU 122 COLUMNS IN INCREMENTS OF TWO.
i.e.: 20,22,24,26.....118,120,122.
- HOUSING MATERIAL: GLASS AND MINERAL FILLED THERMOPLASTIC.
CONTACT MATERIAL: BeCu
- "Z" - TAIL LENGTH OPTIONS:
E = .125±.010 / 3.18±.25
F = .145±.010 / 3.68±.25
H = .180±.010 / 4.57±.25
- COMPANY NAME, PART NUMBER AND LOT CODE TO APPEAR ON THIS SURFACE PER BUS-12-108.
- DIMENSION "A" CALCULATION = .100 (2.54) X NO. OF COLUMNS + 1.05 (26.7)
- DIMENSION "B" CALCULATION = .100 (2.54) X NO. OF COLUMNS + .750 (19.05)
- DIMENSION "C" CALCULATION = .100 (2.54) X NO. OF COLUMNS DIVIDED BY 2 - .100 (2.54)
- PRODUCT WITH "LF" SUFFIX MEETS EUROPEAN UNION DIRECTIVES AND OTHER COUNTRY REGULATIONS AS DESCRIBED IN GS-22-008.
- THIS HOUSING WILL WITHSTAND EXPOSURE TO 260 DEGREES C PEAK TEMPERATURE FOR 10 - 30 SECONDS IN A CONVECTION, INFRA-RED OR VAPOR PHASE REFLOW OVEN.
- PLATING OPTION:
MAY BE EITHER GOLD OR GXT PLATED AT MANUFACTURER'S OPTION.

mat'l. code		NOTE 3		surface	tolerance	projection	product family
				ISO 1902	ISO 406	 INCH/MM	HPC
				tolerances unless otherwise specified	ISO 1101		title
ltr	ec'n no	dr	date	angles	linear	scale 1:1	4 ROW R/A RECEPTACLE SOLDER TAIL, 1 GUIDE PIN
M							dwg no
				dr	D. SHEAFFER	1/07/90	sheet 2 of 2
				engr	S. CLARK	1/07/90	size
				chr	S. CLARK	1/07/90	A3
				appd	S. CLARK	1/07/90	type
sheet	revision						Product Customer Drawing
index	sheet						

Mouser Electronics

Authorized Distributor

Click to View Pricing, Inventory, Delivery & Lifecycle Information:

[FCI / Amphenol:](#)

[50004-5200ELF](#) [50004-5320ELF](#) [50004-5368HLF](#) [50004-5400HLF](#) [50004-5392FLF](#) [50004-1104E](#) [50004-1200H](#)
[50004-1320E](#) [50004-1352E](#) [50004-1360E](#) [50004-1392E](#) [50004-1416H](#) [50004-1440E](#) [50004-1464F](#) [50004-1488E](#)
[50004-5200E](#) [50004-5320E](#) [50004-5360E](#) [50004-5368H](#) [50004-5400H](#) [50004-5488E](#) [50004-1320H](#) [50004-1344F](#)
[50004-1368F](#) [50004-1368H](#) [50004-1392H](#) [50004-1440F](#) [50004-1440H](#) [50004-1464H](#) [50004-5344ELF](#) [50004-5392F](#)
[50004-5416HLF](#) [50004-5440ELF](#) [50004-1128E](#) [50004-1320F](#) [50004-1416E](#) [50004-5344E](#) [50004-5416H](#) [50004-5440E](#) [50004-5392E](#)