



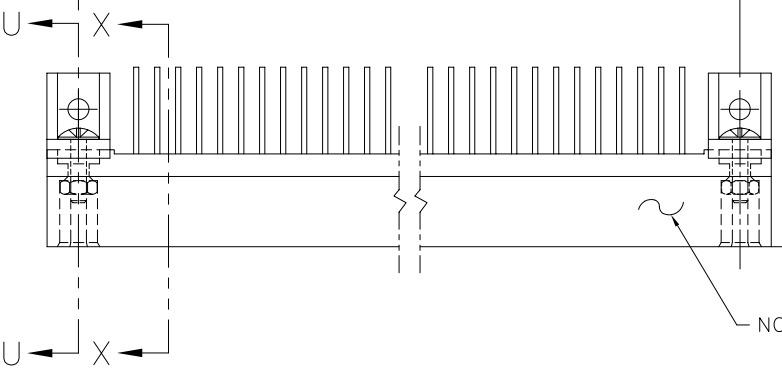
FCIconnect.com

Copyright FCI

PRODUCT NUMBER
SEE TABLE

1 2 3 4 5 6

DIM "B"
SEE NOTE 5



.002:1

NOTE 4

DIM "A" ±.010 [.25]
SEE NOTE 5

DIM "C"
SEE NOTE 5

0.275 [6.98]

0.025 [0.63] TYP.

⊕ ∅ .020 / .51 (M) A B C
AT TIPS

-A-

.100 [2.54] 3X

.002:1

.100 [2.54]

0.050 [1.27]

-C-
0.868 [22.03]

0.585 [14.86]

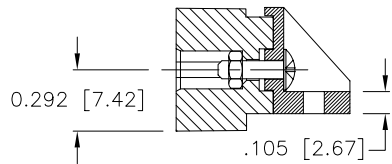
TAIL LENGTH
SEE TABLE

mat'l. code SEE NOTE 3		surface ISO 1302 ✓		tolerance ISO 406 ISO 1101		projection INCH/MM		product family HPC	
ltr		ecm no dr		date		tolerances unless otherwise specified		title	
J	v90523	HTB	3/1/99	angles	linear	.xx±.01/.3	INCH/MM	4 ROW R/A HEADER	
K	v00262	JWS	1/26/00			.xxx±.005/.13	scale 1:1	SOLDER TO BOARD, 0 G.P.	
L	v05-0740	DAI	10/7/05	0'±2'		.xxxx±.0020/.051		dwg no sheet 1 of 3 size	
M	v05-1040	HTB	11/14/05	dr	D.SHEAFFER	6/5/91		50122 A3	
N	M06-0283	MHT	7/27/06	enr	S.CLARK	6/5/91		type Product Customer Drawing	
				chr	S.CLARK	6/5/91			
				appd	S.CLARK	6/5/91			
sheet index	revision sheet	N 1	N 2	N 3					

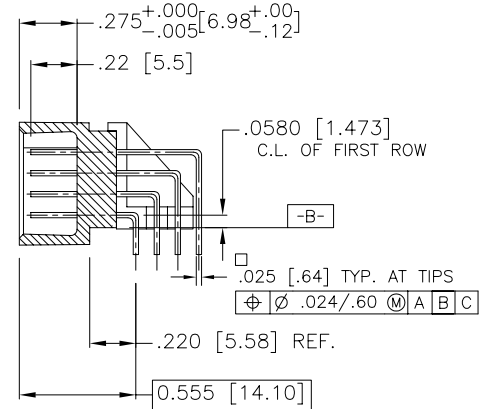
form: A3

1 2 3 4 5 6

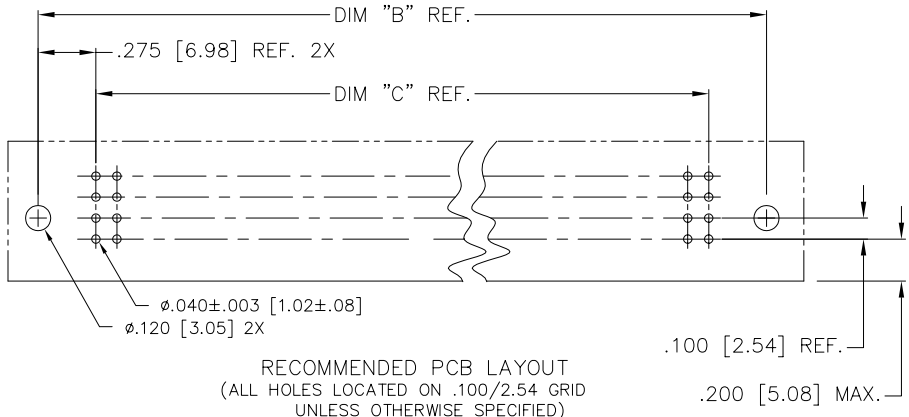
PRODUCT NO.
SEE TABLE



SECTION U-U



SECTION X-X



RECOMMENDED PCB LAYOUT
(ALL HOLES LOCATED ON .100/2.54 GRID
UNLESS OTHERWISE SPECIFIED)



Copyright FCI

mat'l. code SEE NOTE 3		surface ISO 1302 <input checked="" type="checkbox"/>	tolerance ISO 406 ISO 1101	projection 	product family HPC
ltr	ecn	no	dr	date	tolerances unless otherwise specified
N					angles linear .xx±.01/.3
					0°±2' .xxx±.005/.13
					.xxx±.0020/.051
			dr	D.SHEAFFER	6/5/91
			enr	S.CLARK	6/5/91
			chr	S.CLARK	6/5/91
			appd	S.CLARK	6/5/91
sheet	revision				
index	sheet				
				INCH/MM	
				scale 1:1	
				title 4 ROW R/A HEADER SOLDER TO BOARD, 0 G.P.	
				dwg no 50122	
				sheet 2 of 3 size A3	
				type Product Customer Drawing	

PRODUCT NUMBER	NUMBER OF POSITIONS SEE NOTE 2	TAIL LENGTH REF.	TERMINAL PLATING
50122 -1YYYH	YYY	.180/4.57	30μ"/.76μ GOLD
50122 -1YYYJ	YYY	.120/3.05	30μ"/.76μ GOLD
50122 -3YYYH	YYY	.180/4.57	50μ"/1.27μ GOLD
50122 -3YYYJ	YYY	.120/3.05	50μ"/1.27μ GOLD
50122 -5YYYH	YYY	.180/4.57	30μ"/.76μ GXT
50122 -5YYYHLF	YYY	.180/4.57	30μ"/.76μ GXT
50122 -5YYYJ	YYY	.120/3.05	30μ"/.76μ GXT
50122 -5YYYJLF	YYY	.120/3.05	30μ"/.76μ GXT

NOTES:

1. PRODUCT NUMBERING CODE:
 50122 - X YYY Z LF
 LEAD FREE (OPTIONAL)
 TAIL LENGTH SEE TABLE
 NO. OF POSITIONS SEE NOTE 2
 PLATING SEE TABLE
 BASE NUMBER

- PRODUCT NUMBERING CODE FOR
 SELECT LOAD PART NUMBERS:
 50122 - XXYYY LF
 LEAD FREE (OPTIONAL)
 SEQUENCE NUMBER
 ALWAYS 'XX'
 BASE NUMBER

2. THIS PRODUCT IS CONFIGURED IN SIZES OF 6 THRU 100 COLUMNS IN INCREMENTS OF ONE. i.e.: 6,7,8,9,.....98,99,100.
3. HOUSING MATERIAL: GLASS AND MINERAL FILLED HIGH TEMP. THERMOPLASTIC. FLAME RETARDANT PER UL94V-0. COLOR: BLACK. PIN MATERIAL: PHOS. BRONZE
4. MANUFACTURE'S NAME, P/N, AND LOT CODE TO APPEAR ON THIS SURFACE PER BUS-12-108.
5. LENGTH FORMULAS:
 DIM "A" = .100/2.54 x NO. OF COLUMNS + .75/19.1
 DIM "B" = .100/2.54 x NO. OF COLUMNS + .450/11.43
 DIM "C" = .100/2.54 x NO. OF COLUMNS - .100/2.54

6. THIS PRODUCT (WITH "LF" SUFFIX) MEETS EUROPEAN UNION DIRECTIVES AND OTHER COUNTRY REGULATIONS AS DESCRIBED IN GS-22-008.
7. THIS HOUSING WILL WITHSTAND EXPOSURE TO 260° C PEAK TEMPERATURE FOR 10-30 SECONDS IN A CONVECTION, INFRA-RED OR VAPOR PHASE REFLOW OVEN.

mat'l. code SEE NOTE 3		surface ISO 1302 ✓	tolerance ISO 406 ISO 1101	projection 	product family HPC
ltr	ecn	no	dr	date	tolerances unless otherwise specified
N					angles linear .XX±.01/.3 .XXX±.005/.13 0'±2' .XXXX±.0020/.051
					INCH/MM scale 1:1
					title 4 ROW R/A HEADER SOLDER TO BOARD, 0 G.P.
					dwg no 50122
					sheet 3 of 3 size A3
					type Product Customer Drawing
sheet index	revision sheet				

FCJ
 FCJconnect.com
 Copyright FCJ

Mouser Electronics

Authorized Distributor

Click to View Pricing, Inventory, Delivery & Lifecycle Information:

[FCI / Amphenol:](#)

[50122-5112JLF](#) [50122-1216J](#)