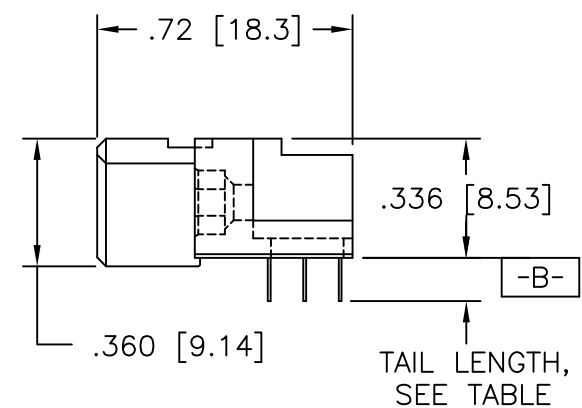
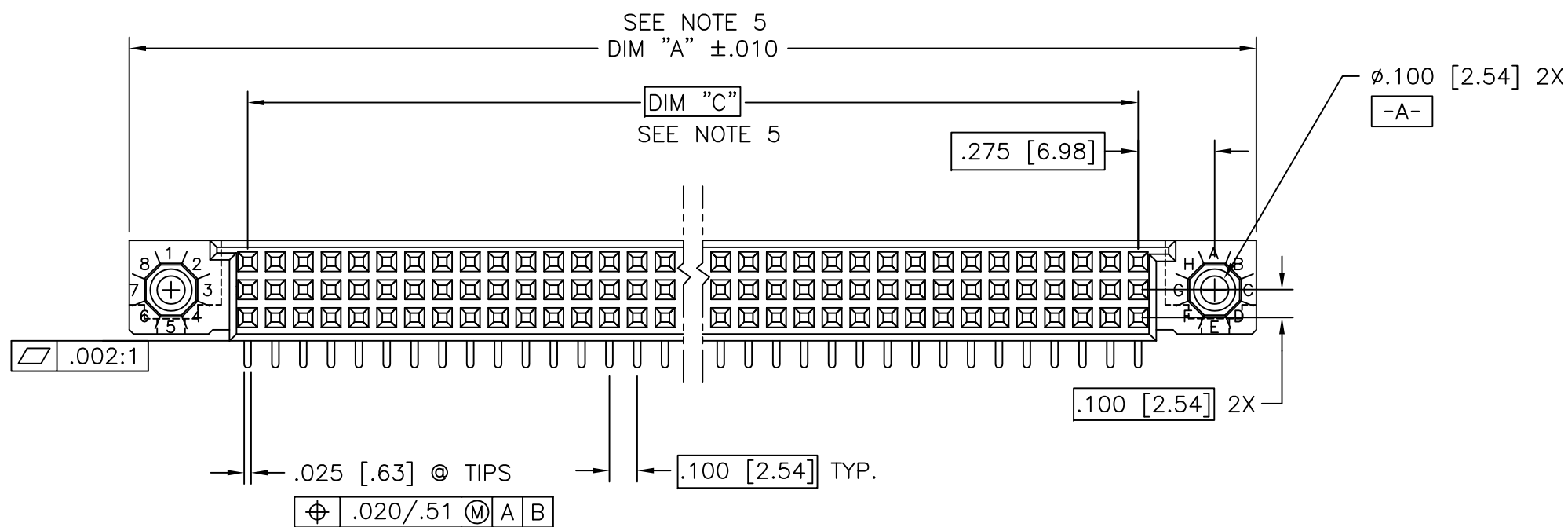
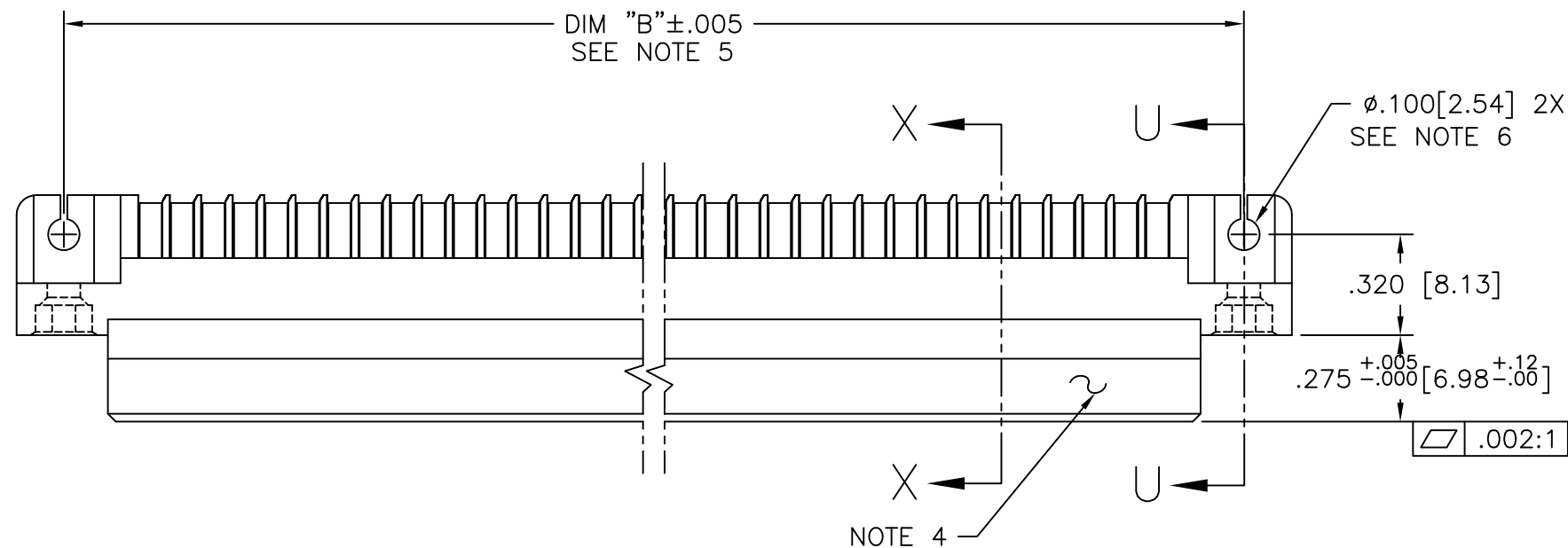
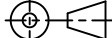
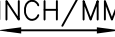





Copyright FCI

PRODUCT NUMBER
SEE TABLE



mat'l. code NOTE 3				surface ISO 1302 ✓				tolerance ISO 406 ISO 1101		projection 		product family HPC																							
ltr				ecn no		dr		date		tolerances unless otherwise specified								INCH/MM 		title 3 ROW R/A RECEPTACLE SOLDER TO BOARD, 0 G.P.															
S		ELX-I-22704		MJA		12/04/15		angles		linear		.XX±.01/.X±0.3																							
T		ELX-I-24437		MJA		07/04/16		.XXX±.005/.XX±0.13																											
—		—		—		—		0°±2° .XXXX±.0020/.XXX±0.051																											
M		V05-1052		DAI		11/17/05		dr		G.PETERS				6/5/96						dwg no				sheet 1 of 6				size							
N		M06-0283		MHT		7/27/06		enr		S.CLARK				6/3/95						50294				A3											
P		M07-0099		AGS		2/09/07		chr		M JACOB				07/04/16						type Product Customer Drawing															
R		M08-0280		AGS		9/30/08		appd		BIJU K PAUL				07/04/16																					
sheet		revision		T		T		R		R		S		A																					
index		sheet		1		2		3		4		5		6																					

PRODUCT NUMBER
SEE TABLE

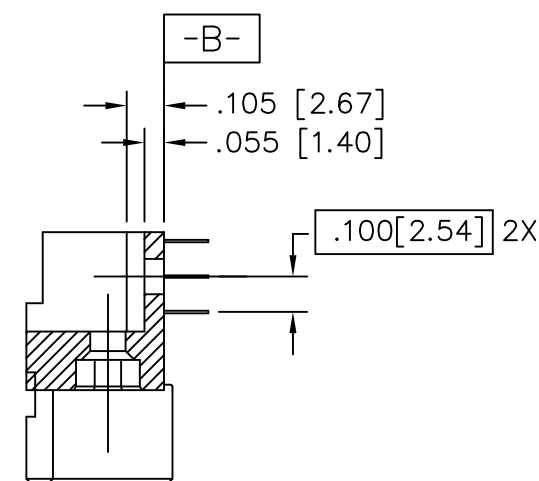
NOTES:

- ①. PRODUCT NUMBERING CODE:
50294 - X YYY Z S LF
- LEAD FREE (OPTIONAL)
SPECIAL FEATURES (NOTE 6)
TAIL LENGTH (SEE TABLE)
NO. OF POSITIONS (NOTE 2)
PLATING (SEE TABLE)
BASE NUMBER

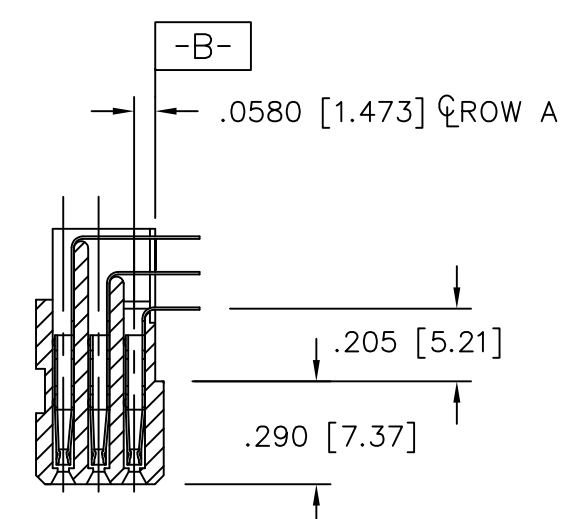
PRODUCT NUMBERING CODE FOR
SELECT LOAD PART NUMBERS:

- 50294 - XXYYY LF
- LEAD FREE (OPTIONAL)
SEQUENCE NUMBER
ALWAYS 'XX'
BASE NUMBER

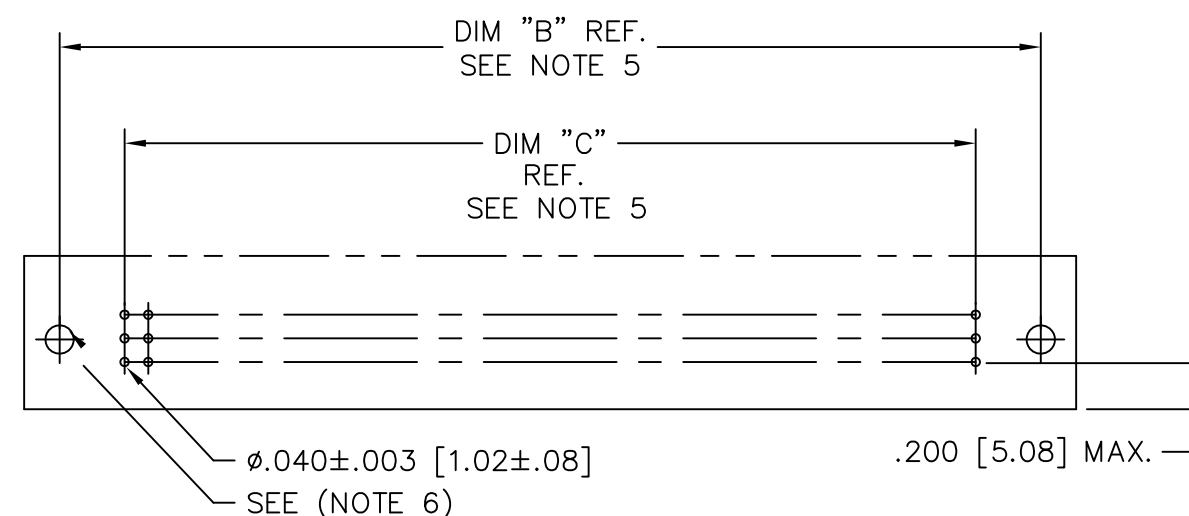
- ②. THIS PRODUCT IS CONFIGURED IN SIZES OF 6 thru 80 COLUMNS IN INCREMENTS OF ONE.
i.e.: 6,7,8,9.....79,80.
- ③. HOUSING MATERIAL: GLASS & MINERAL FILLED HIGH-TEMP THERMOPLASTIC,
FLAME RETARDANT PER UL94 V-0.
CONTACT MATERIAL: BeCu
- ④. MANUFACTURE'S NAME, PART NUMBER AND LOT CODE TO
APPEAR ON THIS SURFACE PER BUS-12-108.
- ⑤. LENGTH DIMENSION FORMULAS:
DIM "A" = $.100/2.54 \times \text{NO. OF COLUMNS} + .75/19.1$
DIM "B" = $.100/2.54 \times \text{NO. OF COLUMNS} + .450/11.43$
DIM "C" = $.100/2.54 \times \text{NO. OF COLUMNS} - .100/2.54$
- ⑥. SPECIAL FEATURES (SEE SHEET 3) AND TABLE.
- = IF CODE IS OMITTED FROM PRODUCT NUMBER: CONNECTOR
IS PROVIDED AS SHOWN, NO SPECIAL FEATURES ARE
SELECTED. P.C.B. MOUNTING HOLE DIMENSION TO BE $\phi.120[3.05]$.
"A" = IF SPECIFIED, PRE-INSTALLED CLAW FOR P.C.B. ATTACHMENT
IN A $\phi.100[2.54]$ P.C.B. MOUNTING HOLE. AVAILABLE IN "E" TAIL LENGTH ONLY.
"B" = IF SPECIFIED, PRE-INSTALLED CLAW FOR P.C.B. ATTACHMENT
IN A $\phi.120[3.05]$ P.C.B. MOUNTING HOLE.
"C" = IF SPECIFIED, MOLDED GUIDE PINS WITH PRE-INSTALLED CLAW
FOR P.C.B. ATTACHMENT IN A $\phi.120[3.05]$ P.C.B. MOUNTING HOLE.
"D" = IF SPECIFIED, MOLDED GUIDE PINS WITH $\phi.120[3.05]$ P.C.B. MOUNTING HOLE (NO CLAW).
- ⑦. CLAW DIMENSION DETERMINED BY P.C.B. HOLE DIAMETER.
- ⑧. THIS PRODUCT (WITH "LF" SUFFIX) MEETS EUROPEAN UNION
DIRECTIVES AND OTHER COUNTRY REGULATIONS AS DESCRIBED IN
GS-22-008.
- ⑨. THIS HOUSING WILL WITHSTAND EXPOSURE TO 260 DEGREES C
PEAK TEMPERATURE FOR 10-30 SECONDS IN A CONVECTION,
INFRA-RED OR VAPOR PHASE REFLOW OVEN.
- ⑩. PLATING OPTION:
MAY BE EITHER GOLD OR GXT PLATED AT MANUFACTURER'S OPTION.
- ⑪. FOR P/Ns 50294-1165HLF & 50294-1210HLF, PLEASE CONTACT PRODUCT MANAGER.



SECTION U-U
NO SPECIAL FEATURE



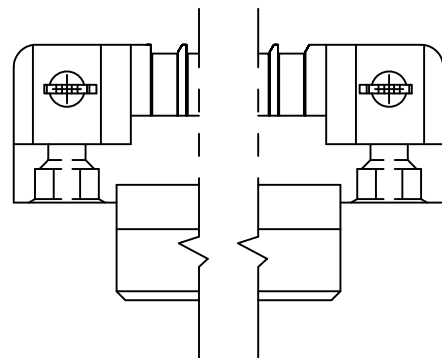
SECTION X-X



RECOMMENDED PCB LAYOUT
(ALL HOLES LOCATED ON $.100 [2.54]$ GRID
UNLESS OTHERWISE SPECIFIED)

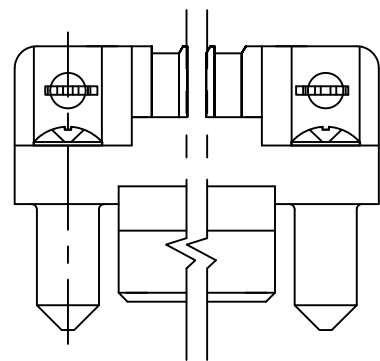
mat'l. code NOTE 3				surface ISO 1302 ✓	tolerance ISO 406 ISO 1101	projection INCH/MM	product family HPC			
ltr	ecn	no	dr	date	tolerances unless otherwise specified	scale 1:1	title 3 ROW R/A RECEPTACLE SOLDER TO BOARD, 0 G.P.			
T					angles linear		dwg no 50294			
					0°±2°					
				dr	G.PETERS	6/5/96	sheet 2 of 6			
				enr	S.CLARK	6/3/95	size A3			
				chr	M JACOB	07/04/16	type Product Customer Drawing			
				appd	BIJU K PAUL	07/04/16				
sheet index	revision sheet									

PRODUCT NUMBER
SEE TABLE

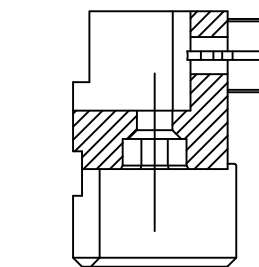
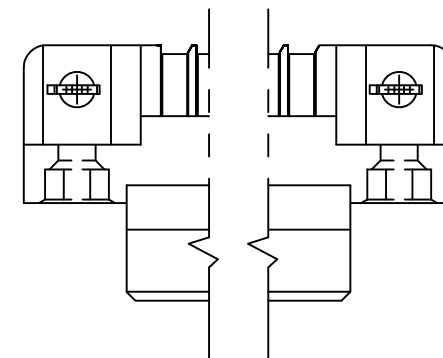


SECTION U-U

SPECIAL FEATURE OPTION "A"
SEE NOTE 6

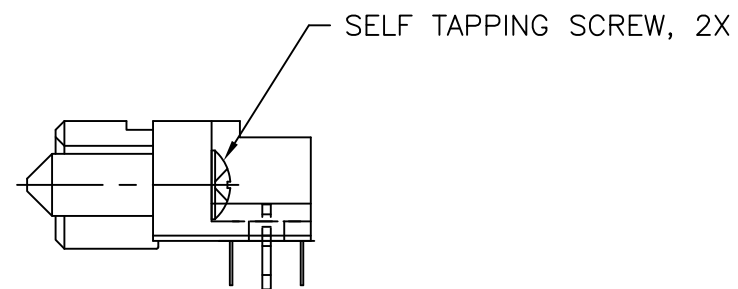
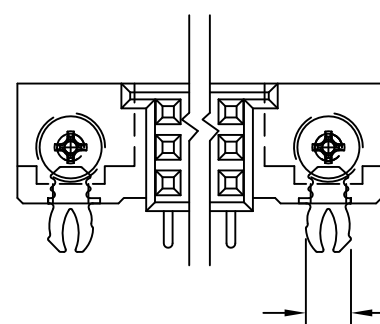


SECTION U-U



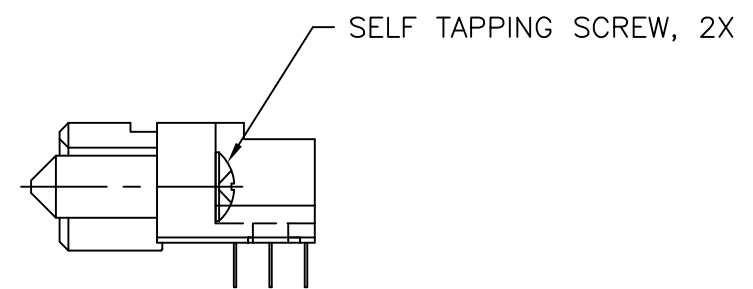
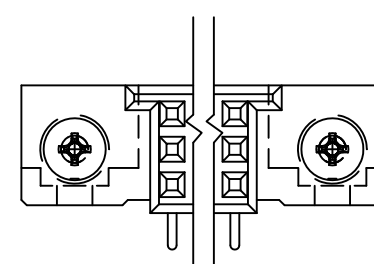
SECTION U-U

SPECIAL FEATURE OPTION "B"
SEE NOTE 6



SELF TAPPING SCREW, 2X

SPECIAL FEATURE OPTION "C"
SEE NOTE 6



SELF TAPPING SCREW, 2X

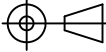


SPECIAL FEATURE OPTION "D"
SEE NOTE 6

mat'l. code NOTE 3				surface ISO 1302 ✓	tolerance ISO 406 ISO 1101	projection INCH/MM	product family HPC									
ltr	ecn	no	dr	date	tolerances unless otherwise specified		title 3 ROW R/A RECEPTACLE SOLDER TO BOARD, 0 G.P.									
R					angles 0°±2°	linear .XX±.01/.X±0.3 .XXX±.005/.XX±0.13 .XXXX±.0020/.XXX±0.051	scale 1:1									
					dr	G.PETERS	6/5/96	dwg no								
					enr	S.CLARK	6/3/95	sheet 3 of 6								
					chr	S.CLARK	6/5/95	size								
					appd	S.CLARK	6/5/95	A3								
sheet index		revision sheet						type Product Customer Drawing								

PRODUCT NUMBER NOTE 1 AND 2	NUMBER OF POSITIONS SEE NOTE 2	TAIL LENGTH ±.010/0.25	SPECIAL FEATURES SEE NOTE 6	TAIL PLATING	CONTACT PLATING SEE NOTE 10
50294-1YYYE	YYY	.125/3.18	NONE	TIN-LEAD	30μ"/0.76μ Au
50294-1YYYEA	YYY	.125/3.18	"A"		30μ"/0.76μ Au
50294-1YYYEB	YYY	.125/3.18	"B"		30μ"/0.76μ Au
50294-1YYYEC	YYY	.125/3.18	"C"		30μ"/0.76μ Au
50294-1YYYED	YYY	.125/3.18	"D"		30μ"/0.76μ Au
50294-1YYYF	YYY	.145/3.68	NONE		30μ"/0.76μ Au
50294-1YYYFB	YYY	.145/3.68	"B"		30μ"/0.76μ Au
50294-1YYYFC	YYY	.145/3.68	"C"		30μ"/0.76μ Au
50294-1YYYFD	YYY	.145/3.68	"D"		30μ"/0.76μ Au
50294-1YYYH	YYY (SEE NOTE 11)	.180/4.57	NONE		30μ"/0.76μ Au
50294-1YYYHB	YYY	.180/4.57	"B"		30μ"/0.76μ Au
50294-1YYYHC	YYY	.180/4.57	"C"		30μ"/0.76μ Au
50294-1YYYHD	YYY	.180/4.57	"D"		30μ"/0.76μ Au
50294-3YYYE	YYY	.125/3.18	NONE		50μ"/1.27μ Au
50294-3YYYEA	YYY	.125/3.18	"A"		50μ"/1.27μ Au
50294-3YYYEB	YYY	.125/3.18	"B"		50μ"/1.27μ Au
50294-3YYYEC	YYY	.125/3.18	"C"		50μ"/1.27μ Au
50294-3YYYED	YYY	.125/3.18	"D"		50μ"/1.27μ Au
50294-3YYYF	YYY	.145/3.68	NONE		50μ"/1.27μ Au
50294-3YYYFB	YYY	.145/3.68	"B"		50μ"/1.27μ Au
50294-3YYYFC	YYY	.145/3.68	"C"		50μ"/1.27μ Au
50294-3YYYFD	YYY	.145/3.68	"D"		50μ"/1.27μ Au
50294-3YYYH	YYY	.180/4.57	NONE		50μ"/1.27μ Au
50294-3YYYHB	YYY	.180/4.57	"B"		50μ"/1.27μ Au
50294-3YYYHC	YYY	.180/4.57	"C"		50μ"/1.27μ Au
50294-3YYYHD	YYY	.180/4.57	"D"	TIN-LEAD	50μ"/1.27μ Au

TABLE CONTINUED ON SHEET 5

PRODUCT NUMBER NOTE 1 AND 2	NUMBER OF POSITIONS SEE NOTE 2	TAIL LENGTH ±.010/0.25	SPECIAL FEATURES SEE NOTE 6	TAIL PLATING	CONTACT PLATING SEE NOTE 10
50294-1YYYELF	YYY	.125/3.18	NONE	TIN	30μ"/0.76μ Au
50294-1YYYEALF	YYY	.125/3.18	"A"		30μ"/0.76μ Au
50294-1YYYEBLF	YYY	.125/3.18	"B"		30μ"/0.76μ Au
50294-1YYYECLF	YYY	.125/3.18	"C"		30μ"/0.76μ Au
50294-1YYYEDLF	YYY	.125/3.18	"D"		30μ"/0.76μ Au
50294-1YYYFLF	YYY	.145/3.68	NONE		30μ"/0.76μ Au
50294-1YYYFBLF	YYY	.145/3.68	"B"		30μ"/0.76μ Au
50294-1YYYFCLF	YYY	.145/3.68	"C"		30μ"/0.76μ Au
50294-1YYYFDLF	YYY	.145/3.68	"D"		30μ"/0.76μ Au
50294-1YYYHLF	YYY	.180/4.57	NONE		30μ"/0.76μ Au
50294-1YYYHBLF	YYY	.180/4.57	"B"		30μ"/0.76μ Au
50294-1YYYHCLF	YYY	.180/4.57	"C"		30μ"/0.76μ Au
50294-1YYYHDLF	YYY	.180/4.57	"D"		30μ"/0.76μ Au
50294-3YYYELF	YYY	.125/3.18	NONE		50μ"/1.27μ Au
50294-3YYYEALF	YYY	.125/3.18	"A"		50μ"/1.27μ Au
50294-3YYYEBLF	YYY	.125/3.18	"B"		50μ"/1.27μ Au
50294-3YYYECLF	YYY	.125/3.18	"C"		50μ"/1.27μ Au
50294-3YYYEDLF	YYY	.125/3.18	"D"		50μ"/1.27μ Au
50294-3YYYFLF	YYY	.145/3.68	NONE		50μ"/1.27μ Au
50294-3YYYFBLF	YYY	.145/3.68	"B"		50μ"/1.27μ Au
50294-3YYYFCLF	YYY	.145/3.68	"C"		50μ"/1.27μ Au
50294-3YYYFDLF	YYY	.145/3.68	"D"		50μ"/1.27μ Au
50294-3YYYHLF	YYY	.180/4.57	NONE		50μ"/1.27μ Au
50294-3YYYHBLF	YYY	.180/4.57	"B"		50μ"/1.27μ Au
50294-3YYYHCLF	YYY	.180/4.57	"C"		50μ"/1.27μ Au
50294-3YYYHDLF	YYY	.180/4.57	"D"	TIN	50μ"/1.27μ Au

mat'l. code NOTE 3				surface ISO 1302 ✓			tolerance ISO 406 ISO 1101			projection 			product family HPC																																																																																																																																																																																																																																																																																																																																																																																																																																																																																																																																																																																																																																																																																																																																																																																																																																																																																																																																																																																																																																																																																																																																																																																																																																																																																																									
ltr	ecn no	dr	date	tolerances unless otherwise specified									INCH/MM 			title 3 ROW R/A RECEPTACLE SOLDER TO BOARD, 0 G.P.																																																																																																																																																																																																																																																																																																																																																																																																																																																																																																																																																																																																																																																																																																																																																																																																																																																																																																																																																																																																																																																																																																																																																																																																																																																																																																						
S				angles	linear	.XX±.01/.X±0.3																																																																																																																																																																																																																																																																																																																																																																																																																																																																																																																																																																																																																																																																																																																																																																																																																																																																																																																																																																																																																																																																																																																																																																																																																																																																																																																
						.XXX±.005/.XX±0.13																																																																																																																																																																																																																																																																																																																																																																																																																																																																																																																																																																																																																																																																																																																																																																																																																																																																																																																																																																																																																																																																																																																																																																																																																																																																																																																
				0°±2°		.XXXX±.0020/.XXX±0.051						scale 1:1			<div><div>FCI</div><div></div></div>																																																																																																																																																																																																																																																																																																																																																																																																																																																																																																																																																																																																																																																																																																																																																																																																																																																																																																																																																																																																																																																																																																																																																																																																																																																																																																							
				dr	G.PETERS			6/5/96			dwg no			sheet 4 of 6													size																																																																																																																																																																																																																																																																																																																																																																																																																																																																																																																																																																																																																																																																																																																																																																																																																																																																																																																																																																																																																																																																																																																																																																																																																																																																																											
				enr	S.CLARK			6/3/95			50294			A3																																																																																																																																																																																																																																																																																																																																																																																																																																																																																																																																																																																																																																																																																																																																																																																																																																																																																																																																																																																																																																																																																																																																																																																																																																																																																																								
				chr	M JACOB			12/04/15																																																																																																																																																																																																																																																																																																																																																																																																																																																																																																																																																																																																																																																																																																																																																																																																																																																																																																																																																																																																																																																																																																																																																																																																																																																																																																														
				appd	BIJU K PAUL			12/04/15																																																																																																																																																																																																																																																																																																																																																																																																																																																																																																																																																																																																																																																																																																																																																																																																																																																																																																																																																																																																																																																																																																																																																																																																																																																																																																														
sheet index		revision sheet																																																																																																																																																																																																																																																																																																																																																																																																																																																																																																																																																																																																																																																																																																																																																																																																																																																																																																																																																																																																																																																																																																																																																																																																																																																																																																																				</

1. ALL POSITIONS ARE LOADED, EXCEPT WHERE NOTED.
2. COLUMN 1, ROW A IS DESIGNATED AS SIGNAL TERM. 1, AS VIEWED FROM THE MATING FACE.

mat'l. code NOTE 3					surface ISO 1302 ✓			tolerance ISO 406 ISO 1101			projection 			product family HPC																																																																																																																																																																																																																																																																																																																																																																																																																																																																																																																																																																															
ltr		ecn no		dr	date		tolerances unless otherwise specified										title 3 ROW R/A RECEPTACLE SOLDER TO BOARD, 0 G.P.																																																																																																																																																																																																																																																																																																																																																																																																																																																																																																																																																																												
A							angles		linear		.XX±.01/.X±0.3																INCH/MM ↔																																																																																																																																																																																																																																																																																																																																																																																																																																																																																																																																																																		
											.XXX±.005/.XX±0.13																																																																																																																																																																																																																																																																																																																																																																																																																																																																																																																																																																																		
							0°±2°				.XXXX±.0020/.XXX±0.051						scale 1:1																																																																																																																																																																																																																																																																																																																																																																																																																																																																																																																																																																												
							dr	M JACOB			12/04/15																																																																																																																																																																																																																																																																																																																																																																																																																																																																																																																																																																																		
							engr	M JACOB			12/04/15																																																																																																																																																																																																																																																																																																																																																																																																																																																																																																																																																																																		
							chr	M. JACOB			12/04/15																																																																																																																																																																																																																																																																																																																																																																																																																																																																																																																																																																																		
							appd	BIJU K PAUL			12/04/15						dwg no 50294 sheet 6 of 6 size A3																																																																																																																																																																																																																																																																																																																																																																																																																																																																																																																																																																												
sheet index		revision sheet																																																																																																																																																																																																																																																																																																																																																																																																																																																																																																																																																																																											