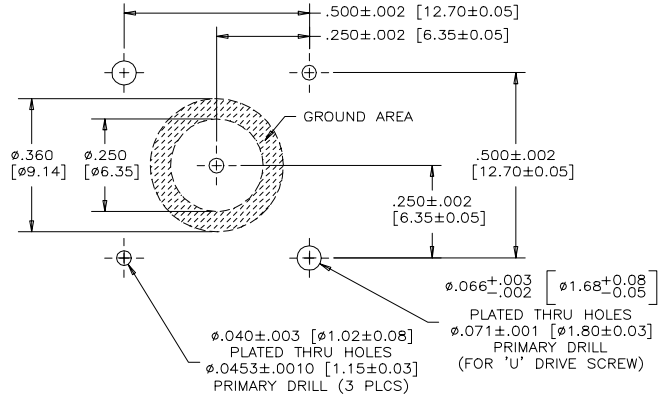
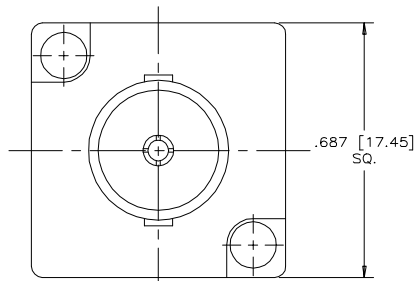
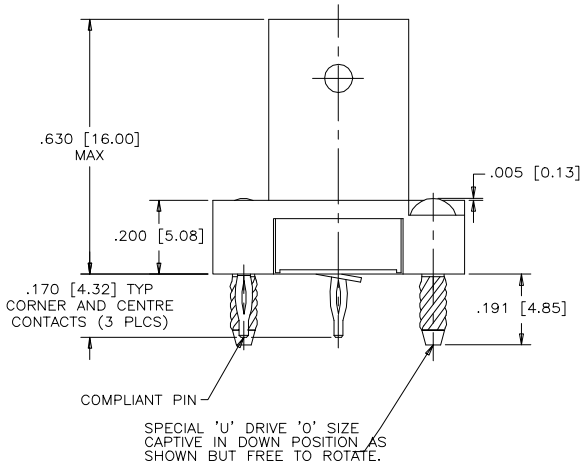


REVISIONS			
SYM	ZONE	ECN, ERN NO.	DATE APPRD.
A		PROPOSAL	2001/06/14 D.M.

THIS IS A CAD DRAWING. DO NOT MANUALLY REVISE!



SUGGESTED HOLE PATTERN



MECHANICAL TECHNICAL DATA

MATERIALS:

- SHELL: ZINC DIECAST NICKEL PLATED
- INSERT: TEFLON
- HOUSING: THERMOPLASTIC MATERIAL
- CENTER SOCKET CONTACT: COPPER ALLOY 50 μ" GOLD OVER 150 μ" NICKEL
- PLATING
- COMPLIANT PIN: COPPER ALLOY 10 μ" GOLD OVER 50 μ" NICKEL
- PLATING
- 'U' DRIVE SCREW: STAINLESS STEEL PASSIVATED

ELECTRICAL TECHNICAL DATA:

- CAPACITANCE @ 1 KHz 10,000 pF ±25%
- WORKING VOLTAGE 200 VDC
- D.W.V. 600 VDC
- DISSIPATION FACTOR % 2.5
- IMPEDANCE 75 Ω ±2 Ω

MATERIAL -----	DRAWN J.SI	DATE 2001/06/10	Amphenol Canada Corp.	
	DESIGNED			
	CHECKED D.MACKERACHER	2001/06/10		
	I. E. APPRD.			
FINISH -----	Q. A. APPRD.		TITLE FILTERED B.N.C. STRAIGHT COMPLIANT PIN, .125" THK BOARD (75 OHMS IMPEDANCE)	
	DWG. APPRD.			
	ENG. REL. NO.			
	REF. EAR 11409			
	DWG. DRAWING NO.		REV. A	
DIMENSIONS ARE IN INCHES	CODE ID. NO. 03554	C P-456-107-A		
	SCALE 5/1	WT. -----	SURF. -----	SHEET 1 OF 1

THIS DOCUMENT CONTAINS PROPRIETARY INFORMATION AND SUCH INFORMATION MAY NOT BE DISCLOSED TO OTHERS FOR ANY PURPOSE OR USED FOR MANUFACTURING PURPOSES WITHOUT WRITTEN PERMISSION FROM AMPHENOL CANADA CORP.