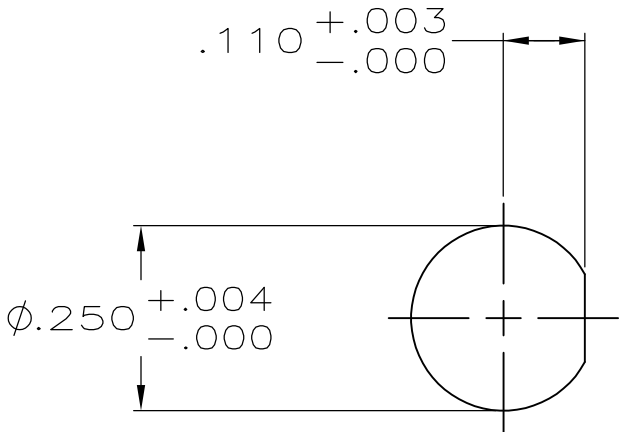
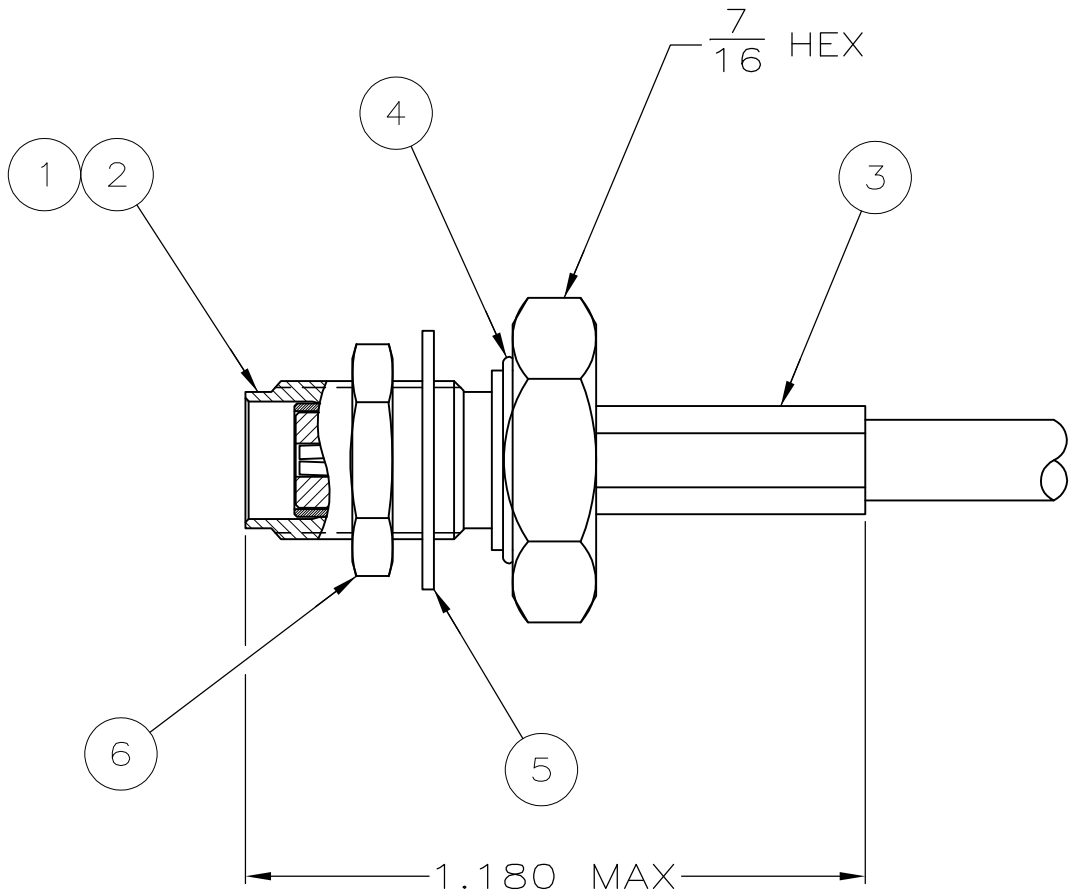
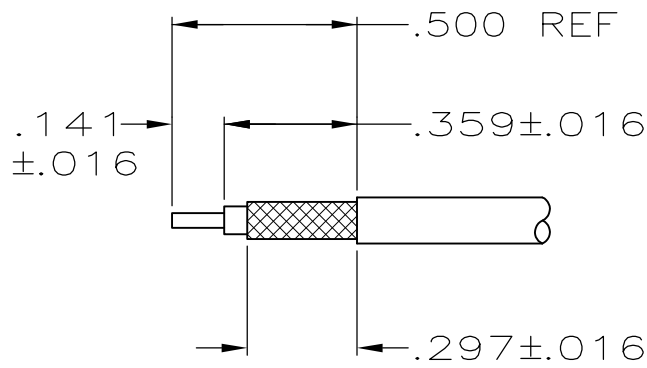


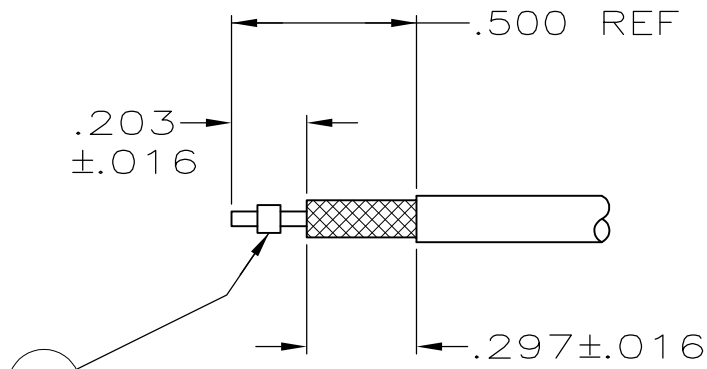
LOC	DIST	REVISIONS				
		P	LTR	DESCRIPTION	DATE	DWN APVD
AJ	16		G	PER EC 0S14-0403-04	12/29/04	DC DCam
			G1	REVISED PER ECO-09-020932	04SEP09	KK AEG



RECOMMENDED
PANEL CUTOUT



RECOMMENDED STRIP LENGTH
FOR
CRIMPED CENTER CONTACT



RECOMMENDED STRIP LENGTH
FOR
SOLDERED CENTER CONTACT

1. FOR USE WITH RG-142/U, 142 A/U, AND 142 B/U CABLE.
2. FOR USE WITH RG-174/U, 188/U, AND 316/U CABLE.
3. FOR USE WITH BELDEN YR20621, (RG-58 TYPE) CABLE WITH CRIMPED OR SOLDERED CENTER CONTACT.
4. FOR USE WITH RG-316/U CABLE WITH CRIMPED OR SOLDERED CENTER CONTACT.
5. CENTER CONTACT: CRIMPING TOOL M22520/2-01 POSITIONER, DMC K997 SELECTOR SETTING, SEE TABLE
6. FERRULE: CRIMPING TOOL M22520/5-01 DIE M22520/5-11 OR .213X.400 HEX
7. FERRULE: CRIMPING TOOL M22520/5-01 DIE M22520/5-35 B OR .128X.400 HEX
8. PRODUCT MEETS PRODUCT SPECIFICATION 108-1574.
9. ITEM 7 IS NOT USED WITH CRIMPED CENTER CONTACT (APPLICABLE TO 448103-3 ONLY).
10. INSTRUCTION SHEET: 408-4032
11. OBSOLETE PARTS: OBSOLETE CIS STREAMLINING PER D.RENAUD/D.SINISI

11	OBSOLETE	4											
	OBSOLETE	5											
		4											
	OBSOLETE	7											
	FERRULE CRIMPING TOOL	SELECTOR SETTING	CENTER CONTACT CRIMPING TOOL	CABLE SIZE	7 SPACER QTY=1	6 JAM NUT QTY=1	5 LOCK-WASHER QTY=1	4 O-RING QTY=1	3 FERRULE QTY=1	2 CONTACT QTY=1	1 BULKHEAD JACK ASSY QTY=1	PART NUMBER	

Mouser Electronics

Authorized Distributor

Click to View Pricing, Inventory, Delivery & Lifecycle Information:

[TE Connectivity:](#)

[448103-2](#)