

INTERCONNECTS

SERIES 416 • .100" GRID ELEVATED • DOUBLE ROW STRIPS

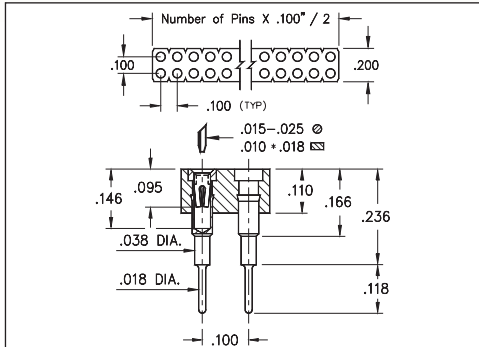


FIG. 1

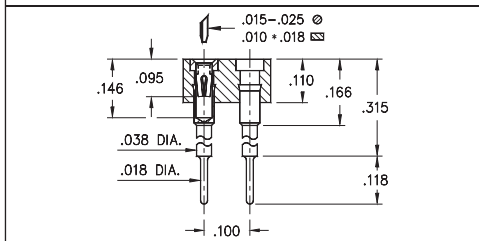


FIG. 2

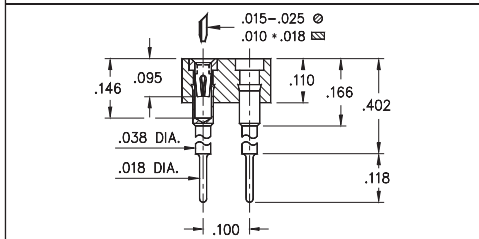


FIG. 3

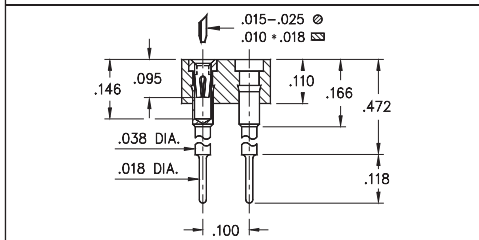


FIG. 4

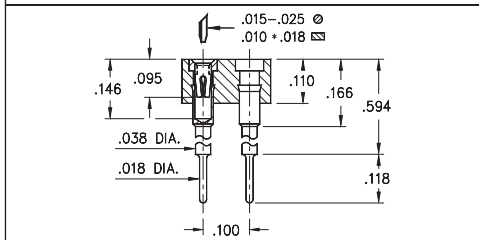


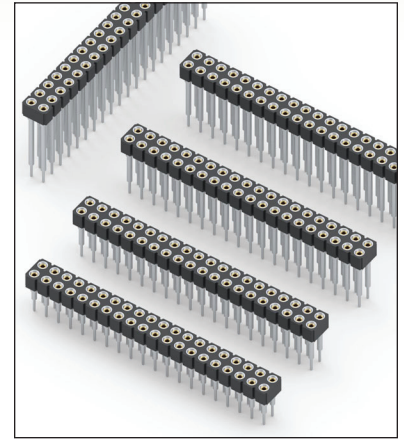
FIG. 5

- Elevated socket strips are available in 5 different heights:

- 416...006 uses pin # 0153-1
 - 416...003 uses pin # 0153-2
 - 416...007 uses pin # 0153-3
 - 416...008 uses pin # 0153-4
 - 416...001 uses pin # 0153-5
- See page 167 for details

- Hi-Rel, 4-finger BeCu #30 contact is rated at 3 amps. See page 253 for details

- Insulators are high temperature thermoplastic, suitable for all soldering operations



ORDERING INFORMATION

	Series 416...006	Standoff Height = .236
FIG. 1	416-XX-2	-41-006000
	Specify number of pins	04-64
FIG. 2	Series 416...003	Standoff Height = .315
	416-XX-2	-41-003000
	Specify number of pins	04-64
FIG. 3	Series 416...007	Standoff Height = .402
	416-XX-2	-41-007000
	Specify number of pins	04-64
FIG. 4	Series 416...008	Standoff Height = .472
	416-XX-2	-41-008000
	Specify number of pins	04-64
FIG. 5	Series 416...001	Standoff Height = .594
	416-XX-2	-41-001000
	Specify number of pins	04-64



XX=Plating Code
See Below

For
Electrical, Mechanical
& Environmental Data,
See page 264

SPECIFY PLATING CODE XX=	91	93	41	43
Sleeve (Pin)	200 μ"Sn/Pb	200 μ"Sn/Pb	200 μ"Sn	200 μ"Sn
Contact (Clip)	10 μ"Au	30 μ"Au	10 μ"Au	30 μ"Au



Mouser Electronics

Authorized Distributor

Click to View Pricing, Inventory, Delivery & Lifecycle Information:

Mill-Max:

[416-93-264-41-008000](#) [416-93-264-41-007000](#) [416-93-264-41-006000](#) [416-93-264-41-003000](#) [416-93-264-41-001000](#) [416-43-264-41-008000](#) [416-43-264-41-007000](#) [416-43-264-41-006000](#) [416-43-264-41-003000](#) [416-43-264-41-001000](#) [416-93-208-41-006000](#)