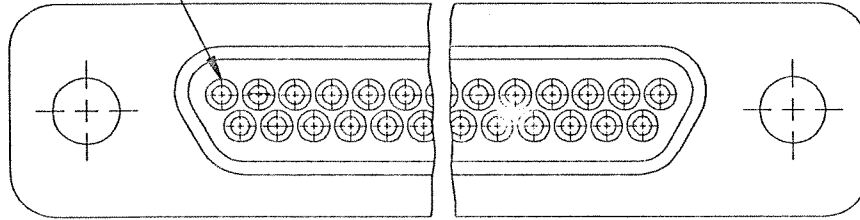
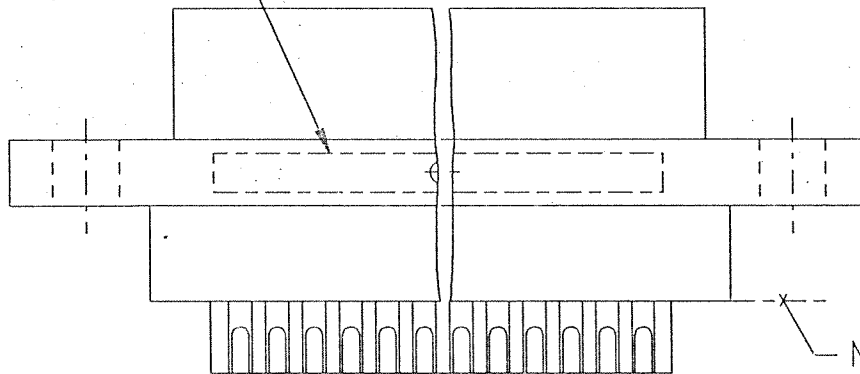


REVISION					
ZONE	LTR	ECN	DESCRIPTION	DATE	APPROVED
	C	38856	GENERAL DWG. UPDATE.	4/24/99	[Signature]

CAVITY #1



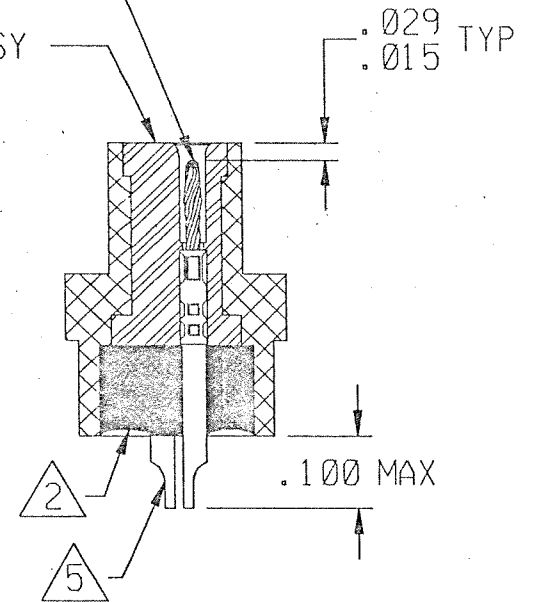
MARKING AREA



NO EPOXY BEYOND THIS SURFACE

PIN CONTACT

INSULATOR ASSY



2-1532133-7

NOTES; UNLESS OTHERWISE SPECIFIED

1. MARK PER TIS.
2. EPOXY AS SHOWN USING HYSOL P/N: 194-8102-6215/6225.
3. NO SCRATCHES SHOWING BASE METAL PERMITTED ON SOLDER POTS.
4. CRIMP SOLDER POTS INTO CONTACTS PER MEP 302-05.
5. CHAMFER ON SOLDER POTS ARE TO BE PARALLEL WITH SIDES OF CONNECTOR WITHIN 10°.

UNLESS OTHERWISE SPECIFIED DIMENSIONS ARE IN INCHES. TOLERANCE ARE:			APPROVALS		MICRODOT CONNECTORS A DIVISION OF UNI-STAR INDUSTRIES INC. 305 PASADENA AVE., SO. PASADENA, CA 91030
FRACTIONS	DECIMALS	ANGLES	SIGNATURE	DATE	
± 1/8	.XX ± .01 .XXX ± .005	± 2°	DRAWN BY: TONY LEE	04/19/99	METAL SHELL "D" CONN. MCK-*****PS
MATERIAL:			P.E. [Signature]	4/24/99	
FINISH:			D.A.		CODE M
THIS DOCUMENT IS THE PROPERTY OF MICRODOT CONNECTORS, A DIVISION OF UNI-STAR INDUSTRIES INC. USE OF THIS DOCUMENT OR ANY PART THEREOF IS STRICTLY FORBIDDEN WITHOUT THE EXPRESS WRITTEN PERMISSION OF MICRODOT CONNECTORS, A DIVISION OF UNI-STAR INDUSTRIES INC.			SIZE	CODE IDENT NO.	DRAWING NO.
			A	98278	094-0000-0003
SCALE: NONE					SHEET 1 OF 1