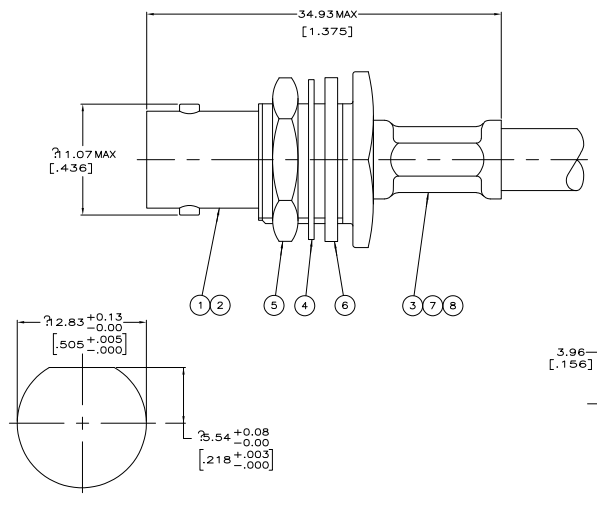
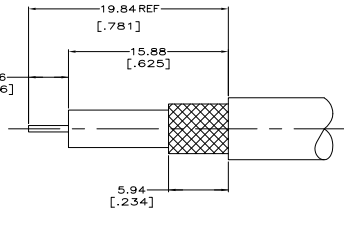


THIS DRAWING IS UNCLASSIFIED
 UNLESS INDICATED OTHERWISE
 © 2008 BY THE ELECTRONICS CORPORATION ALL RIGHTS RESERVED

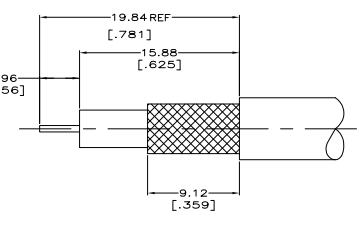
REV	DATE	BY	CHK	DESCRIPTION
16		AJ	WV	REVISED PER ECO-06-018704
V1				REVISED PER ECO-06-018704



RECOMMENDED PANEL CUTOUT



VIEW A



VIEW B

- △ MAX PANEL THICKNESS .240
- △ CRIMP TOOL: 220190-1
- △ BULK PACKAGE
- 4. USE INSTRUCTION SHEET 9763
- △ SPECIAL PACKAGING: BULK PACKAGE 25 PIECES

OBsolete	CUSTOM CABLE, C/C-24AWG, DOD-109, JOD-153	A	4.52 (178)	1.07 (042)	852922-2	-	-	329633	1-329631-2	1-329632-2	9-221132-6	413746-5	413744-2	1-413590-7
NOT RELEASED	-	A	4.52 (178)	1.07 (042)	852922-1	-	-	-	-	-	-	-	-	1-413590-6
OBsolete	JIS 3C-2V	A	4.52 (178)	1.07 (042)	852922-1	-	-	329633	1-329631-2	1-329632-2	9-221132-4	2-413746-5	413744-7	1-413590-4
OBsolete	BELDEN 8218 AND JIS 2.5C-2V	A	4.52 (178)	1.07 (042)	852922-2	-	-	329633	1-329631-2	1-329632-2	9-221132-6	1-413746-0	413744-2	1-413590-3
OBsolete	JIS 2.5C-2W	A	5.41 (213)	1.07 (042)	852922-1	-	-	329633	1-329631-2	1-329632-2	9-221132-0	1-413746-0	413744-2	1-413590-2
OBsolete	JIS 3C-2W	A	6.48 (255)	1.07 (042)	852922-1	-	-	329633	1-329631-2	1-329632-2	9-221132-9	2-413746-5	413744-6	1-413590-1
OBsolete	ZENITH (C/C-.020, DOD-115, JOD-210)	A	5.41 (213)	1.07 (042)	852922-1	-	-	-	-	-	8-221132-9	2-413746-5	413744-5	1-413590-0
OBsolete	RG-59 TYPE WITH .0031 C/C & BELDEN 9295,9266,9240	A	6.48 (255)	1.07 (042)	852922-1	-	-	329633	1-329631-2	1-329632-2	9-221132-1	2-413746-0	413744-1	413590-9
OBsolete	RG-179/U & 187/U	A	4.52 (178)	1.07 (042)	852922-2	222001-6	227194-2	329633	1-329631-2	1-329632-2	9-413658-0	1-413746-5	413744-2	413590-8
OBsolete	AT&T 734A	A	6.48 (255)	1.07 (042)	852922-1	-	-	329633	1-329631-2	1-329632-2	9-221132-3	2-413746-0	413744-4	413590-7
OBsolete	TIMES RG-59 DOUBLE BRAIDED, 270 O.D.	A	8.23 (324)	1.07 (042)	852922-3	-	-	329633	1-329631-2	1-329632-2	9-221132-2	413746-5	413744-1	413590-6
OBsolete	BELDEN 8281,9231 & AT&T 728 AND JIS 5C-2V	B	8.23 (324)	1.07 (042)	852922-3	-	-	329633	1-329631-2	1-329632-2	9-221132-2	2-413746-0	413744-3	413590-5
OBsolete	AT&T KS 19224 12 AND JIS 1.5C-2V	A	4.52 (178)	1.07 (042)	852922-2	222001-6	227194-2	329633	1-329631-2	1-329632-2	9-413658-2	1-413746-5	413744-2	413590-4
OBsolete	BELDEN 8218 AND JIS 2.5C-2V	A	4.52 (178)	1.07 (042)	852922-2	-	-	329633	1-329631-2	1-329632-2	9-221132-6	1-413746-0	413744-2	413590-3
OBsolete	RG-59/U,59A/U & 59B/U	A	6.48 (255)	1.07 (042)	852922-1	-	-	329633	1-329631-2	1-329632-2	9-221132-1	413746-5	413744-1	413590-2
OBsolete	BELDEN 88241	A	6.48 (255)	1.07 (042)	852922-1	-	-	329633	1-329631-2	1-329632-2	9-413658-3	413746-5	413744-1	413590-1

FOR USE WITH CABLE	VIEW	FERRULE (HEX) CONTACT (SQ)	DIE SET	TUBING, METAL QTY=1	TUBING, PLASTIC QTY=1	GASKET QTY=1	JAM NUT QTY=1	LOCKWASHER	FERRULE QTY=1	CONTACT QTY=1	JACK ASSY QTY=1	PART NUMBER
		CRIMP HEIGHTS		⑧	⑦	⑥	⑤	④	③	②	①	

THIS DRAWING IS A CONTROLLED DOCUMENT

DESIGNED BY	DATE	REVISED BY	DATE
APPROVED BY		APPROVED BY	

TITLE: JACK, BULKHEAD, 75 OHM, HEX CRIMP, ENG
 DRAWING NO: A100779
 CUSTOMER DRAWING: G=413590
 SHEET: 1 OF 1