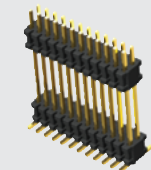


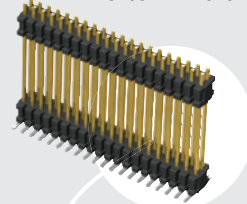


(1,27 mm) .050"



FW-12-05-G-D-530-101

FW-20-05-F-D-610-065



FW-SM SERIES

# SMT MICRO BOARD STACKER

## SPECIFICATIONS

For complete specifications and recommended PCB layouts see [www.samtec.com?FW-SM](http://www.samtec.com?FW-SM)

**Insulator Material:**  
Black Liquid Crystal Polymer  
**Terminal Material:**  
Phosphor Bronze  
**Plating:**  
Sn or Au over 50µ" (1,27 µm) Ni  
**Operating Temp Range:**  
-55°C to +125°C  
**RoHS Compliant:**  
Yes

## Processing:

**Lead-Free Solderable:**  
Yes  
**SMT Lead Coplanarity:**  
(0,10 mm) .004" max (02-30)  
(0,15 mm) .006" max (31-50)

## RECOGNITIONS

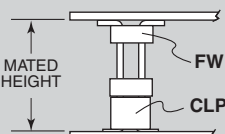
For complete scope of recognitions see [www.samtec.com/quality](http://www.samtec.com/quality)



Mates with:  
CLP, FFSD, FLE

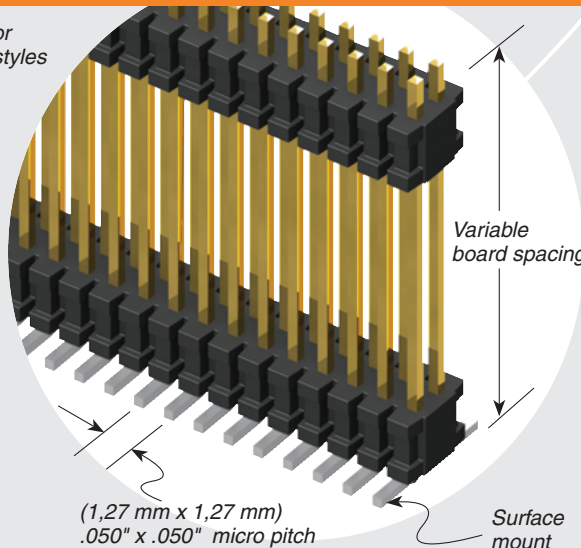
Low profile or skyscraper styles

## APPLICATIONS



LEAD STYLE		MATED HEIGHT*
FW	CLP	
FW-XX-03-X-X-233-065	-02	(8,13) .320
FW-XX-03-X-X-303-065		(9,91) .390

\*Processing conditions will affect mated height.



(1,27 mm x 1,27 mm)  
.050" x .050" micro pitch

Surface mount

## ALSO AVAILABLE (MOQ Required)

- Smaller stack heights
- Contact Samtec.

## TAPE & REEL AVAILABILITY

No tooling charges.  
Minimum order is the lesser of a full reel quantity or 125 pieces.  
Order any quantity above minimum.  
In-house design, manufacture.  
Quick turn-around.  
Call Samtec for specifications and ordering information.

**Note:** For added mechanical stability, Samtec recommends mechanical board spacers be used in applications with gold or selective gold plated connectors. Contact [ipg@samtec.com](mailto:ipg@samtec.com) for more information.

**Note:** This Series is non-standard, non-returnable.

FW	NO. PINS PER ROW	LEAD STYLE	PLATING OPTION	D	STACKER HEIGHT	POST HEIGHT	OPTION
	02 thru 50	Specify LEAD STYLE from chart	<p><b>-F</b> = Gold flash on post, Matte Tin on tail</p> <p><b>-L</b> = 10µ" (0,25 µm) Gold on post, Matte Tin on tail</p> <p><b>-G</b> = 10µ" (0,25 µm) Gold on post, Gold flash on tail</p>		<p><b>-“XXX”</b> = Stacker Height (in inches) Example: -250 = (6,35 mm) .250"</p>	<p><b>-“XXX”</b> = Post Height (in inches) (1,65 mm) .065" minimum Example: -065 = (1,65 mm) .065"</p>	<p><b>-ES</b> = End Shroud (-075 post height only. Mate only with CLP) (5,46 mm) .215" to (15,49 mm) .610" stacker height only 9 pins/row min.</p> <p><b>-EP</b> = End Shroud with Guide Post (-075 post height only. Mate only with CLP.) (5,46 mm) .215" to (15,49 mm) .610" stacker height only 9 pins/row min.</p> <p><b>-A</b> = Alignment Pin (3 positions min.) (5,46 mm) .215" to (15,75 mm) .620" stacker height only</p> <p><b>-P</b> = Pick &amp; Place Pad (5 positions min.)</p> <p><b>-TR</b> = Tape &amp; Reel (Max overall height = Post+Stacker Height+ Pad+Alignment Pin = .700 (17,78))</p>

LEAD STYLE	STACKER HEIGHT	STACKER + POST
-03	(5,46) .215 to (8,51) .335	(7,11) .280 to (10,16) .400
-05	(8,64) .340 to (15,49) .610	(10,29) .405 to (17,15) .675