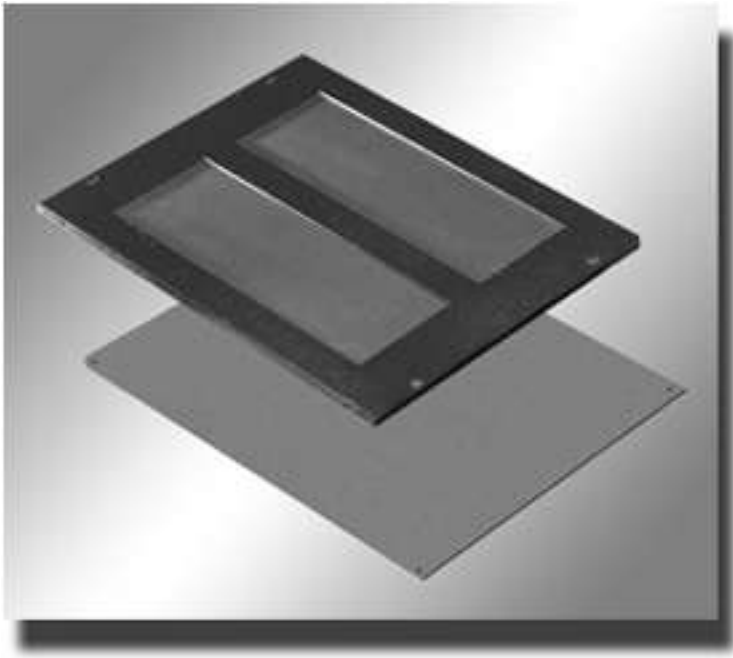


## "Contempra 2" Rack Frame Bottoms



### Features:

- 14 gauge steel construction...
- Supplied with mounting hardware...
- 2 types available (Micro Cell Cable Entry and Solid - pictured from top to bottom)...
- Paint matches "C2" type rack frame in the same rugged textured powder paint finish...

### Micro Cell Cable Entry Bottom

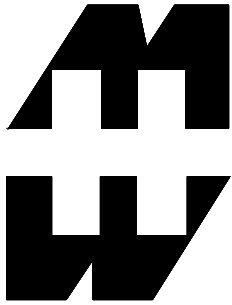
(Features 2 cutouts for cable access. Underside of cutouts covered with black foam rubber which, when punctured for cable access, still maintains a virtually sealed bottom)

Part Number			Drawing File Size		.zip File Size	Use With Rack Frame Depth	Cutout Size (2 cutouts)
<b>C2BPCE1923BK1</b> <b>C2BPCE1923CG1</b>	Black Gray/ Beige		77K		11K	23.63"	11.5" x 3.5"
<b>C2BPCE1931BK1</b> <b>C2BPCE1931CG1</b>	Black Gray/ Beige		77K		11K	31.5" or 36"	18.5" x 6"

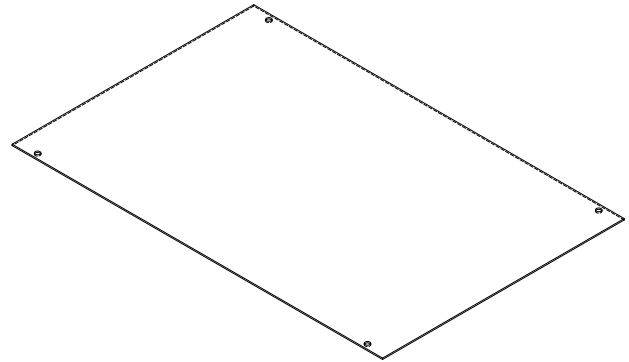
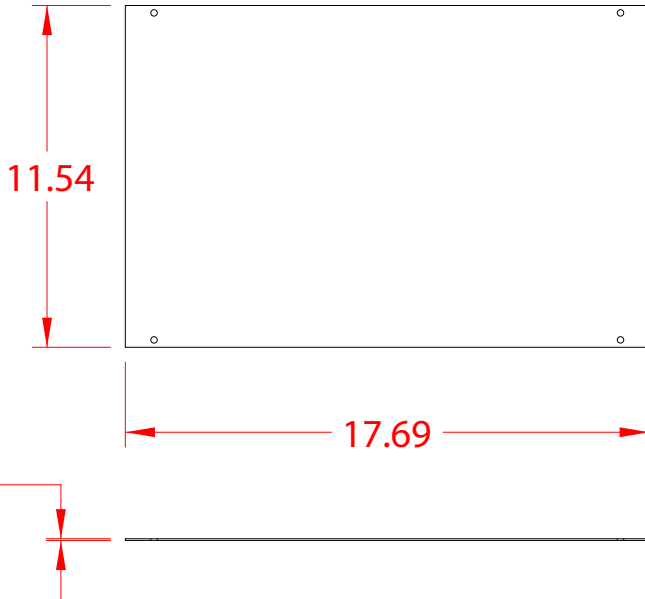
## Solid Bottom

(For use when bottom of rack must be closed off.)

Part Number	Color		Drawing File Size		.zip File Size	Use With Rack Frame Depth
<b>C2BPS1923BK1</b> <b>C2BPS1923CG1</b>	Black Gray/ Beige		77K		10K	23.63"
<b>C2BPS1931BK1</b> <b>C2BPS1931CG1</b>	Black Gray/ Beige		77K		10K	31.5" or 36"



PART No. C2BPS1923

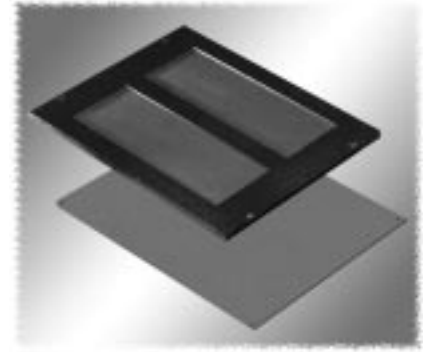
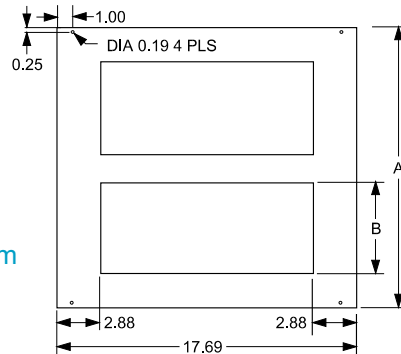


# Bottom Options (C2 Series)

## FRAME BOTTOMS

- 14 gauge steel construction
- Micro Cell Cable Entry Bottom features 2 cutouts for cable access. Under side of cutouts covered with black foam rubber which, when punctured for cable access, still maintains a virtually sealed bottom
- Mounting hardware included

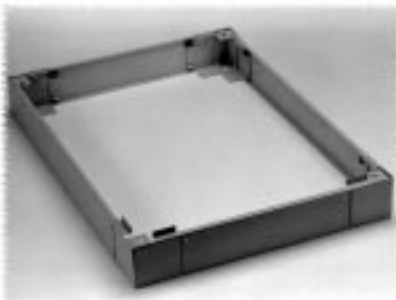
Micro Cell Cable Entry Bottom



Micro Cell Cable Entry or Solid Steel (pictured top to bottom)

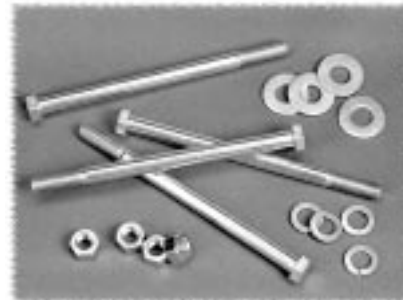
Part Number		Type	Dimensions (Inches)			
Black Textured	Beige Textured		Panel Width	A	B	Rack Depth
<a href="#">C2BPS1923BK1</a>	<a href="#">C2BPS1923CG1</a>	Solid	19	11.5	-	23.63
<a href="#">C2BPS1931BK1</a>	<a href="#">C2BPS1931CG1</a>	Solid	19	18.5	-	31.50 or 36.00
<a href="#">C2BPCE1923BK1</a>	<a href="#">C2BPCE1923CG1</a>	Cable Entry	19	11.5	3.5	23.63
<a href="#">C2BPCE1931BK1</a>	<a href="#">C2BPCE1931CG1</a>	Cable Entry	19	18.5	6.0	31.50 or 36.00

## PLINTH



- Adds 4" to overall rack height
- 14 gauge steel construction
- Features 4 corner units and 4 removable fill panels
- By removing both front & rear panels, easy access to bottom cabling and forklift lifting/transport are achieved
- Not compatible with levelling feet or casters

## BOLT DOWN KIT



- Fixes rack to floor
- Kit includes set of four - 3/8" x 5 1/2" bolts with flat washers and nuts
- Can be used with or without plinths
- Part Number: [CBDK4](#)

Part Number		Panel Width	Use with Frame Depth
Black Textured	Beige Textured		
<a href="#">CPL19423BK1</a>	<a href="#">CPL19423CG1</a>	19"	23.63"
<a href="#">CPL19431BK1</a>	<a href="#">CPL19431CG1</a>	19"	31.50"
<a href="#">CPL19436BK1</a>	<a href="#">CPL19436CG1</a>	19"	36.00"