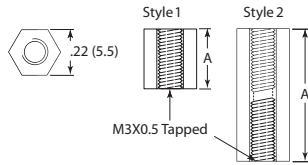


FEMALE / FEMALE THREADED STANDOFFS



HTS/CBTS Series Threaded Standoff



CBTS Series (Threaded Standoffs) can be used with the following screws:

Threads: 4-40, 6-32

Threads: M3 & M4

SCREWS:

SCREWS:

SPS Series - Page: 786

SPX Series - Page: 786

SXHM Series - Page: 784

SCSM Series - Page: 787

SPXM Series - Page: 786



Specifications:

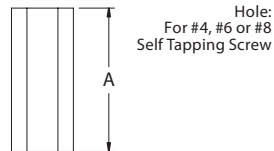
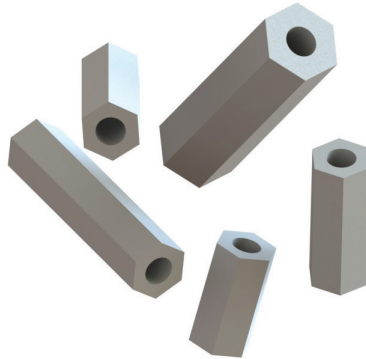
- Material: Nylon 6/6
- Color: Natural
- Flame Class: UL94 V-2

Size	C
#4	0.250
#6	0.250
M3	0.217

Item No.			A	Bulk Pack Qty.	
#4	#6	#8	In	mm	
—	—	—	0.157	4.0	1000
—	—	—	0.197	5.0	1000
—	—	—	0.236	6.0	1000
HTS4-4-48	HTS6-4-48	—	0.250	6.4	1000
—	—	—	0.276	7.0	1000
HTS4-5-48	—	—	0.313	7.9	1000
—	—	—	0.315	8.0	1000
—	—	—	0.354	9.0	1000
HTS4-6-48	HTS6-6-48	—	0.375	9.5	1000
—	—	—	0.394	10.0	1000
—	—	—	0.413	10.5	1000
—	—	—	0.433	11.0	1000
HTS4-7-48	HTS6-7-48	—	0.437	11.1	1000
—	—	—	0.472	12.0	1000
HTS4-8-48	HTS6-8-48	—	0.500	12.7	1000
—	—	—	0.504	12.8	1000
—	—	—	0.531	13.5	1000
—	—	—	0.551	14.0	1000
—	HTS6-9-48	—	0.563	14.3	1000
—	—	—	0.591	15.0	1000
HTS4-10-48	HTS6-10-48	HTS8-10-48	0.625	15.9	1000

Item No.			A	Bulk Pack Qty.	
#4	#6	#8	In	mm	
—	—	—	0.630	16.0	1000
—	—	—	0.669	17.0	1000
—	—	—	0.709	18.0	1000
—	—	—	0.717	18.2	1000
—	—	—	0.748	19.0	1000
—	—	—	0.787	20.0	1000
—	—	—	0.791	20.1	1000
—	—	—	0.866	22.0	1000
—	—	—	0.945	24.0	1000
—	—	—	0.984	25.0	1000
—	HTS6-16-48	—	1.000	25.4	1000
—	—	—	1.063	27.0	1000
—	—	—	1.181	30.0	1000
—	—	—	1.260	32.0	1000
—	—	—	1.496	38.0	1000
—	—	—	1.575	40.0	1000
—	—	—	1.654	42.0	1000
—	—	—	1.772	45.0	1000
—	—	—	1.929	49.0	1000
—	—	—	2.047	52.0	1000

HS Hex Self Tapping Spacer



- Mounted with a metal self-tapping screw that threads the plastic
- Material: UL94 V-0 CPVC
- Color: Grey

Item No.	Self Tapping Screw	"L" Spacer Length	ID	Across Flats	Bulk Pack Qty.
HS-4-3	#4	3/8 (9.5)	.102 (2.6)	.187 (4.8)	1,000
HS-4-4	#4	1/2 (12.7)	.102 (2.6)	.187 (4.8)	1,000
HS-4-6	#4	3/4 (19.1)	.102 (2.6)	.187 (4.8)	1,000
HS-4-7	#4	7/8 (22.2)	.102 (2.6)	.187 (4.8)	1,000
HS-4-8	#4	1 (25.4)	.102 (2.6)	.187 (4.8)	1,000
HS-6-4	#6	1/2 (12.7)	.110 (2.8)	.250 (6.4)	1,000
HS-6-5	#6	5/8 (15.9)	.110 (2.8)	.250 (6.4)	1,000
HS-6-6	#6	3/4 (19.1)	.110 (2.8)	.250 (6.4)	1,000
HS-6-7	#6	7/8 (22.2)	.110 (2.8)	.250 (6.4)	1,000
HS-6-8	#6	1 (25.4)	.110 (2.8)	.250 (6.4)	1,000
HS-6-10	#6	1-1/4 (31.8)	.110 (2.8)	.250 (6.4)	500
HS-6-12	#6	1-1/2 (38.1)	.110 (2.8)	.250 (6.4)	500
HS-6-14	#6	1-3/4 (44.5)	.110 (2.8)	.250 (6.4)	500
HS-8-8	#8	1 (25.4)	.141 (3.6)	.375 (9.5)	1,000
HS-8-14	#8	1-3/4 (44.5)	.141 (3.6)	.375 (9.5)	500
HS-8-16	#8	2 (50.8)	.141 (3.6)	.375 (9.5)	500
HS-8-24	#8	3 (76.2)	.141 (3.6)	.375 (9.5)	500