



Category 5e Coupler Patch Panel

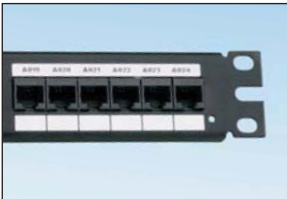
- Coupler panel ports provide fast and easy plug and play connection of 6 and 8-position RJ45 patch cords
- No tools required
- Designed to exceed ANSI/TIA-568-C.2 Category 5e and all ISO 11801 2nd Edition Class D channel standard requirements at swept frequencies up to 100 MHz
- Contacts plated with 50 microinches of gold for superior performance
- Can be clearly identified with optional labels and icons
- Mounts to standard EIA 19" rack or 23" racks with optional extender bracket



Part Number	Part Description	No. of Rack Spaces [^]	Std. Pkg. Qty.	Std. Ctn. Qty.
CP245E88BLY	24-port, Category 5e, patch panel with 24 pre-installed RJ45 Category 5e channel compliant couplers.	1	1	10

[^]One rack space = 1.75" (44.45mm).
M6 and #12-24 mounting screws included.
Each coupler module acts as one connecting hardware component in a channel.
TX5e™ UTP Patch Cords available on page B.42.

Component Labels for Category 5e Coupler Patch Panel



Suggested Label Solutions for TIA/EIA-606-A Compliance				
Part Number	Laser/Ink Jet Desktop Printer Label	TDP43ME Thermal Transfer Desktop Printer Label	PanTher™ LS8E Hand-Held Printer Label	Cougar™ LS9 Hand-Held Printer Label
CP245E88BLY	C252X030FJJ	C252X030YPT	C252X030FJC	T031X000FJC-BK

For complete labeling solutions and product information, reference charts on pages O.1 – O.22.

A.
System
Overview

B.
Copper
Systems

C.
Fiber
Optic
Systems

D.
Power
over
Ethernet

E.
Zone
Cabling

F.
Wireless

G.
Outlets

H.
Media
Distribution

I.
Physical
Infrastructure
Management

J.
Overhead &
Underfloor
Routing

K.
Surface
Raceway

L.
Cabinets,
Racks &
Cable
Management

M.
Grounding &
Bonding

N.
Industrial

O.
Labeling &
Identification

P.
Cable
Management
Accessories

Q.
Index

Mouser Electronics

Authorized Distributor

Click to View Pricing, Inventory, Delivery & Lifecycle Information:

Panduit:

[CP245E88BLY](#)