

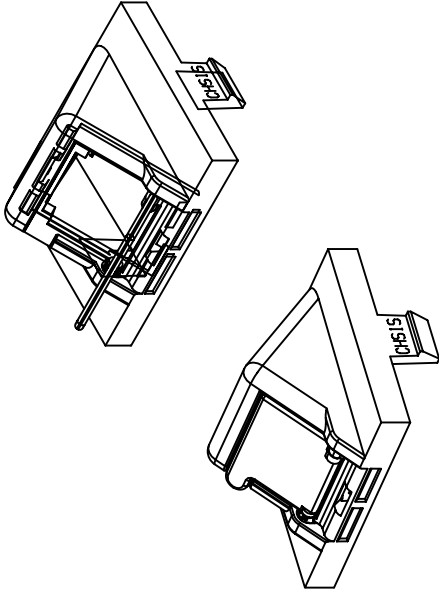
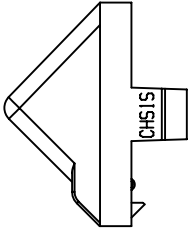
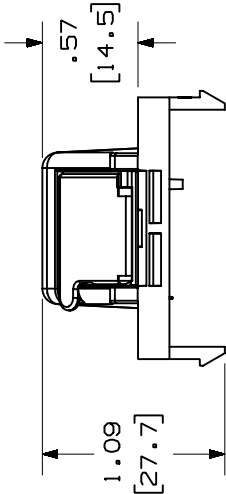
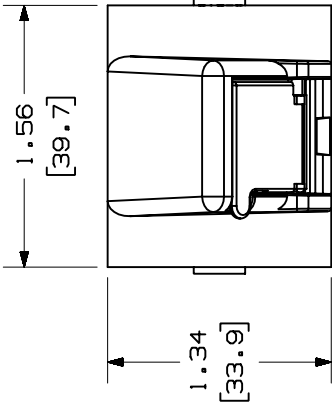


THIS COPY IS PROVIDED ON A RESTRICTED BASIS AND IS NOT TO BE USED IN ANY WAY DETRIMENTAL TO THE INTERESTS OF PANDUIT CORP.

| * PANDUIT P/N | WEIGHT |
|---------------|----------------------------------|
| CHS1S** | .15 LB/10 PCS (68.0 g/10 PCS) |

NOTES:

- * 1. SEE CURRENT CATALOG FOR ADDITIONAL PART NUMBER SUFFIXES TO INDICATE COLOR AND OR PACKAGE QUANTITY.
- 2. THIS PART IS TO BE USED WITH THE MINI-COM BEZELS AND MINI-COM MODULES.
- 3. DIMENSIONS IN PARENTHESES ARE IN METRIC.



CAD FILENAME/LAYERS

M00762AA_DC_00A.PRT

PANDUIT

CORP. TINLEY PARK, ILLINOIS

1 POSITION SLOPED SHUTTERED
INSERT (CHS1S**) CUSTOMER DRAWING

UNLESS OTHERWISE SPECIFIED,
DIMENSIONAL TOLERANCES ARE:
(.X) ±.010 (.3)
(.XX) ±.03 (.8) ANGLES ±

UNLESS OTHERWISE SPECIFIED,
ALL DIMENSIONS ARE GIVEN
IN INCHES, THIRD ANGLE PROJECTION.

DRAWN BY

JSP

DATE

10-27-99

CHECKED BY

MAT'L:

ABS

SCALE

NONE

DRAWING NO.

00762-03

DWG

SIZE

RELEASED TO PRODUCTION.

DESCRIPTION

CHK

DATE

REV

BY

ECN

CHK

CUST

SUP



Mouser Electronics

Authorized Distributor

Click to View Pricing, Inventory, Delivery & Lifecycle Information:

Panduit:

[CHS1SWH-X](#) [CHS1SEI-X](#) [CHS1SIW-X](#)